



**SAVE  
CALIFORNIA  
STREETS**

# 2014 Local Streets & Roads Needs Assessment: Statewide & San Mateo County Findings

Presented by Theresa Romell, MTC

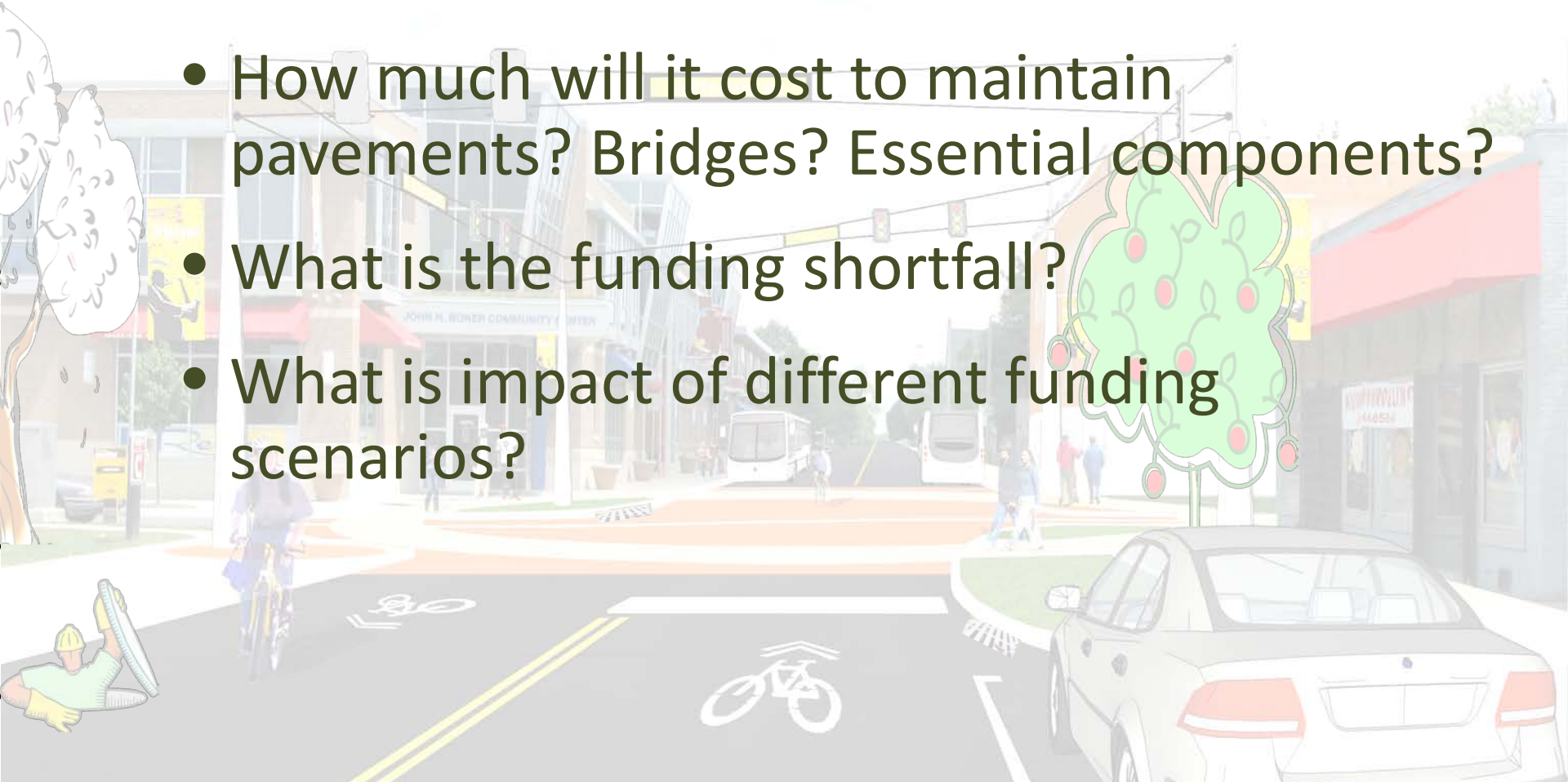


RTPA  
RCTF

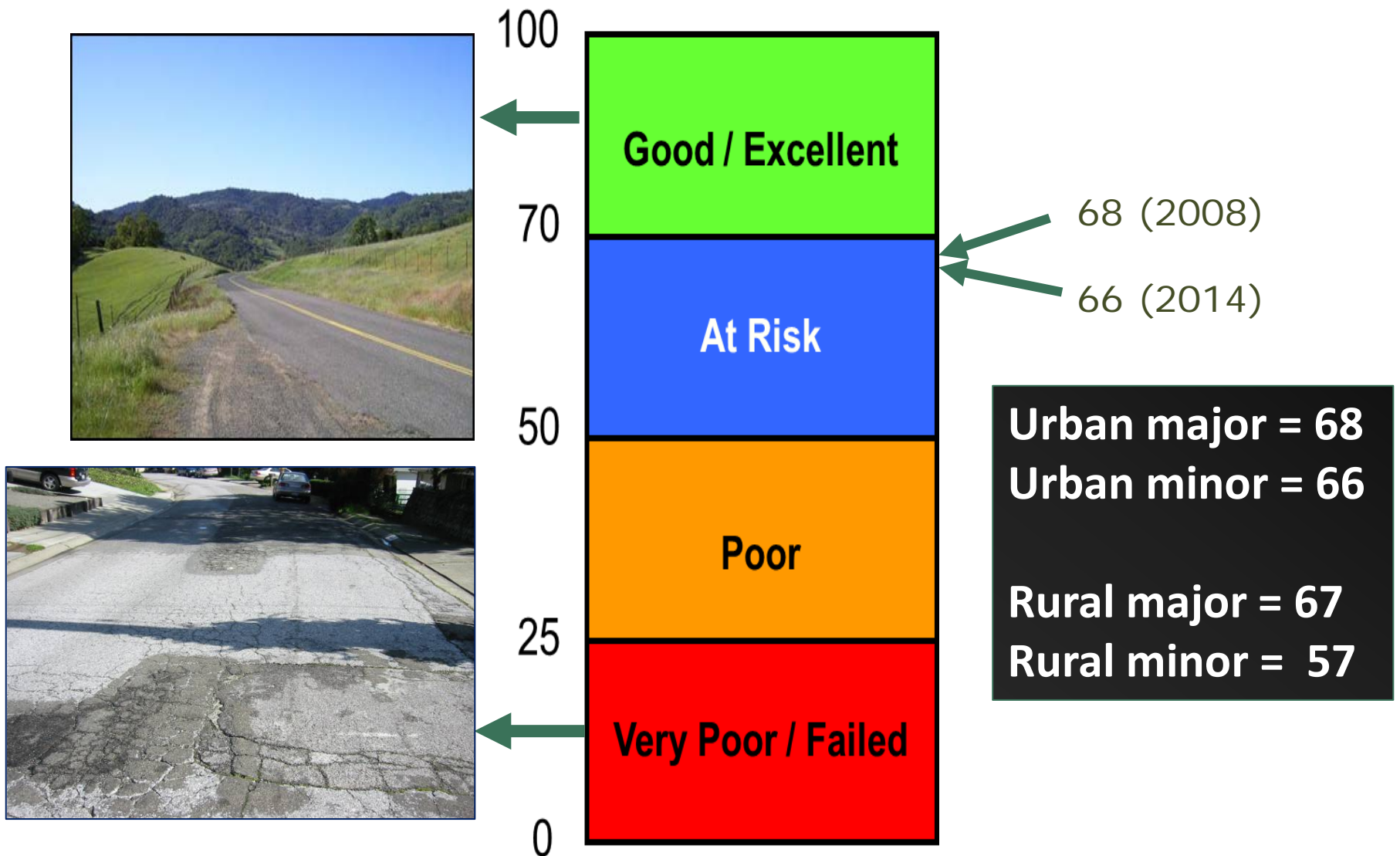


# Background

- What are pavement conditions?
- How much will it cost to maintain pavements? Bridges? Essential components?
- What is the funding shortfall?
- What is impact of different funding scenarios?



# Average Pavement Condition Index

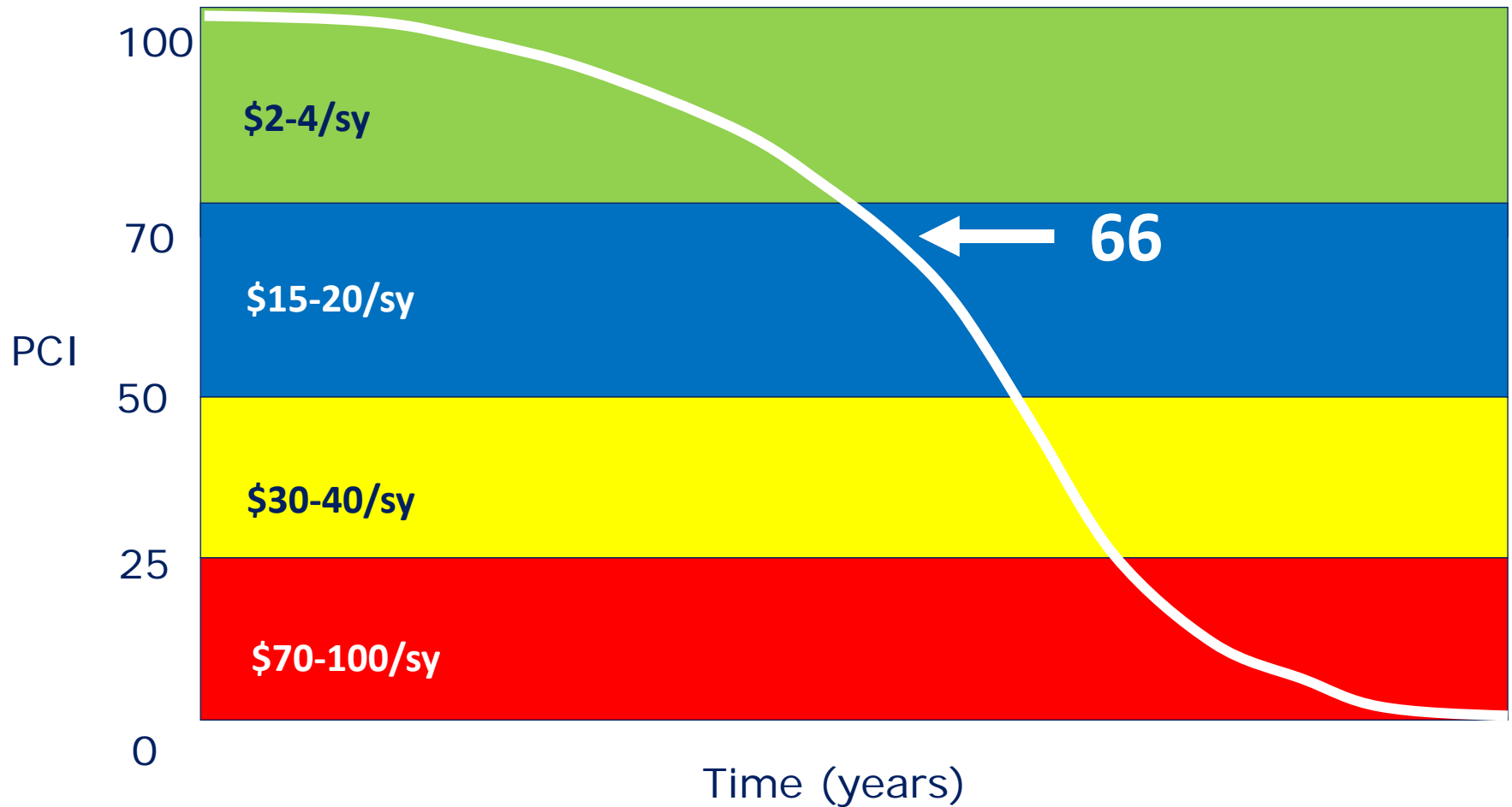


# Statewide Average PCI = 66

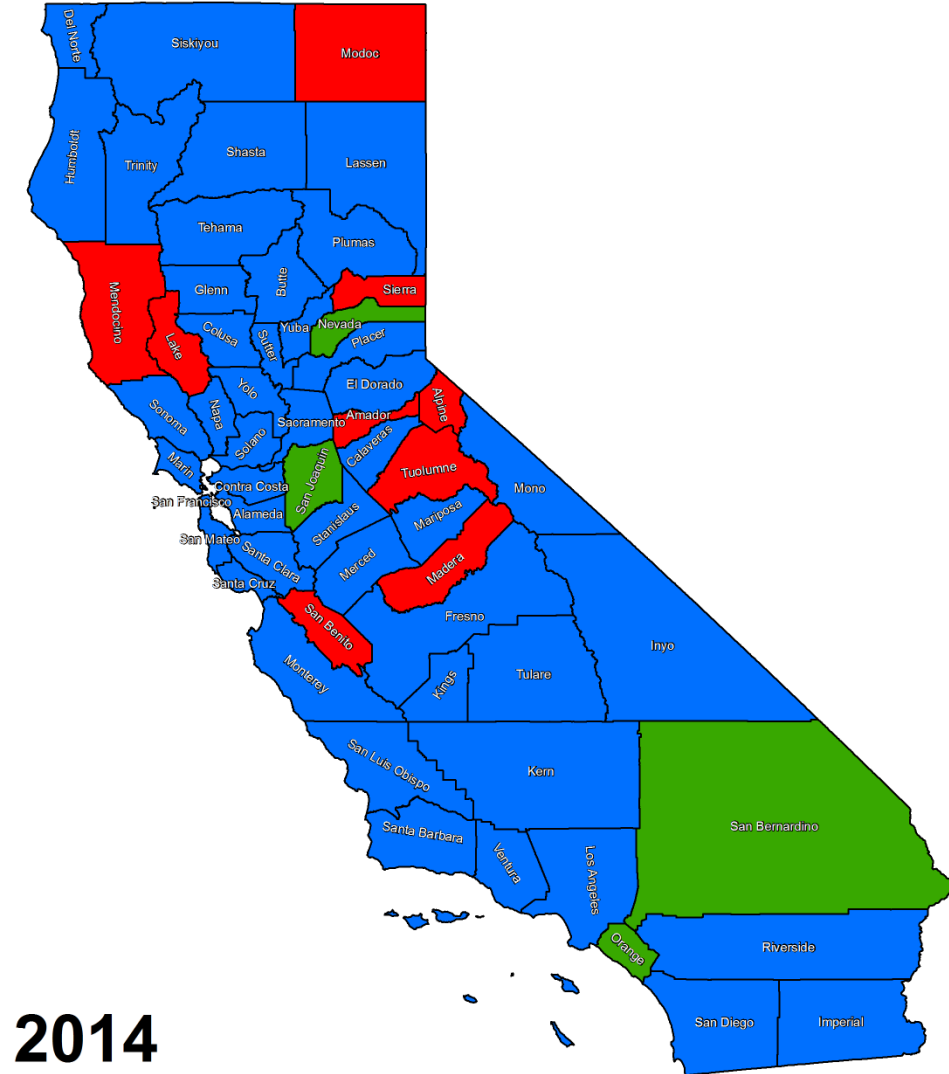
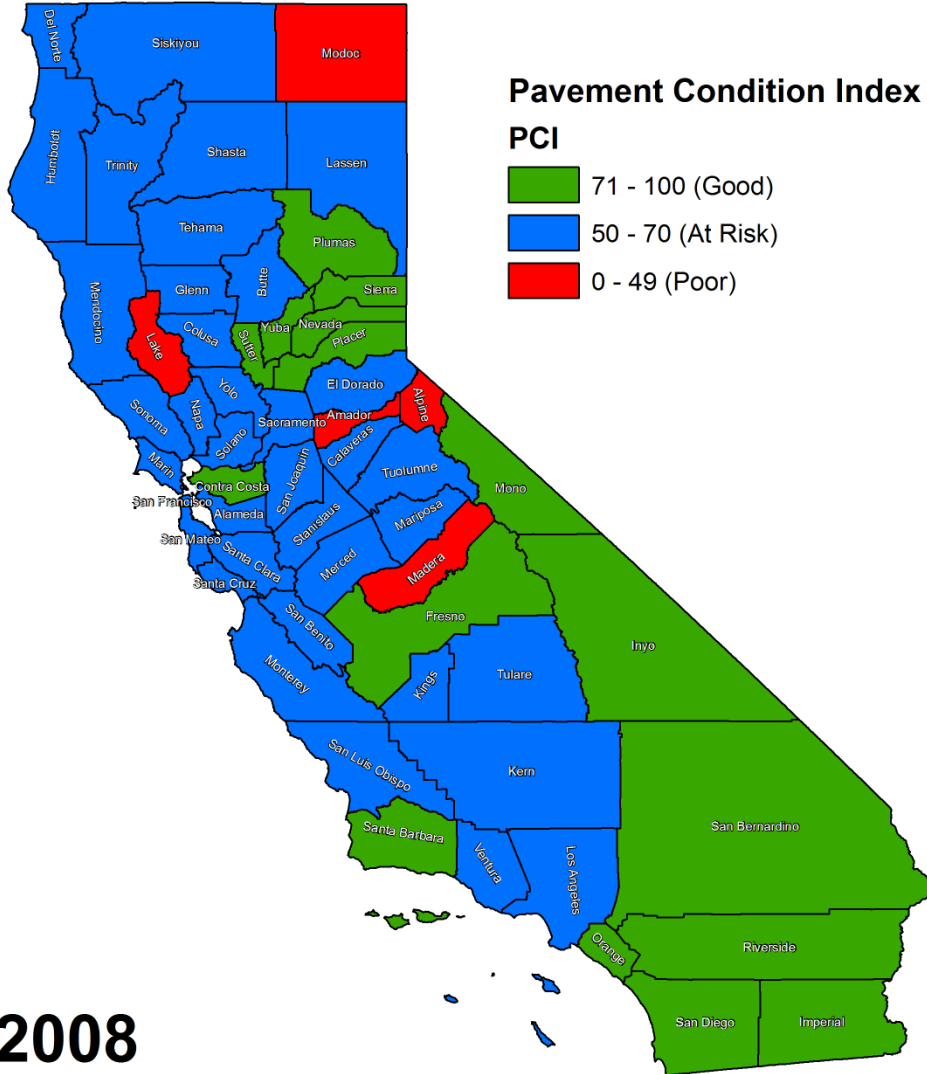


**This doesn't look too bad...**

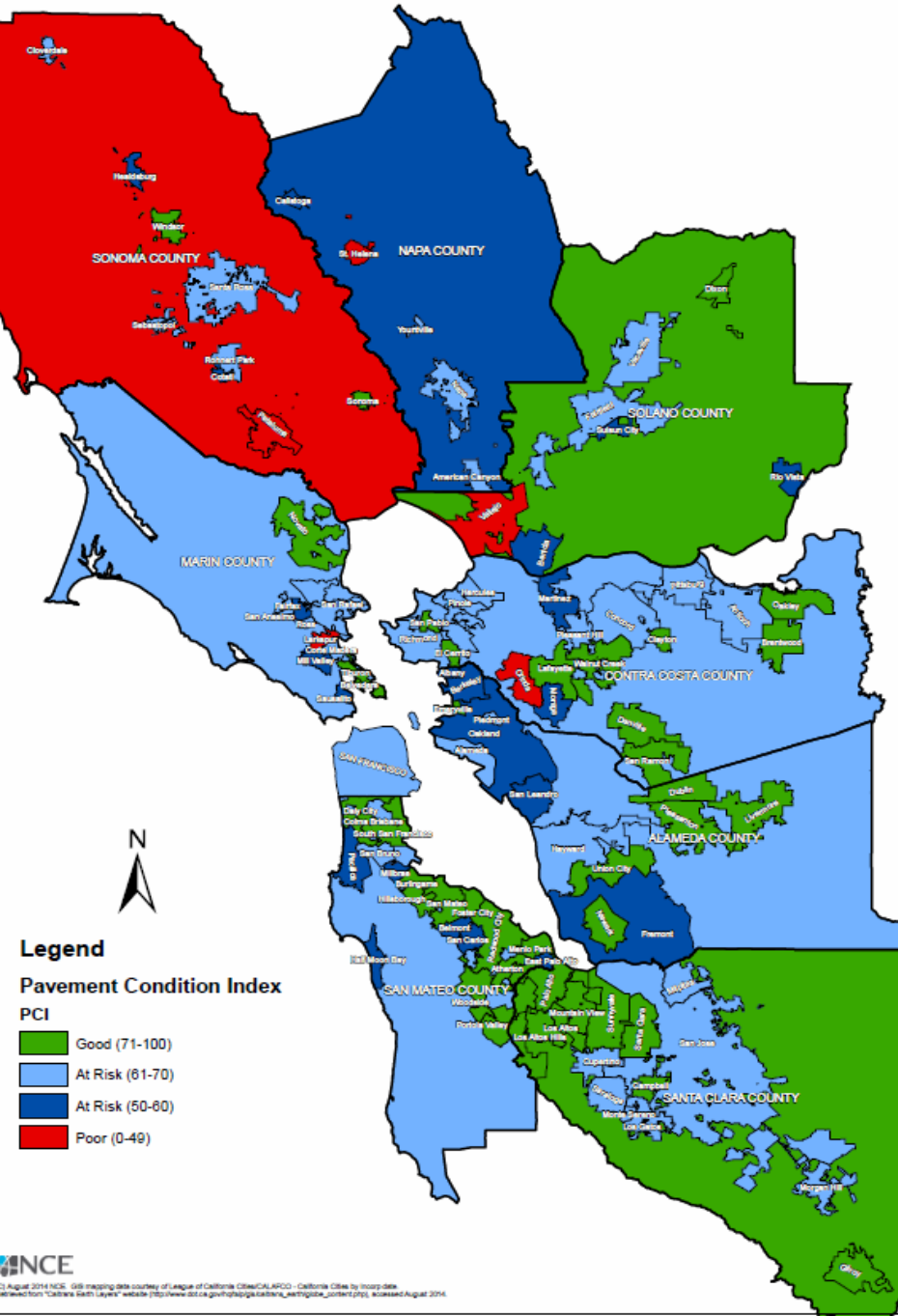
# So Why is 66 Critical?



# PCI Trends



# 2014 Report – Detailed PCIs



- Report and website will include maps for all counties
- Maps depict PCI down to city level

# Condition of San Mateo County Local Roads

	Total Lane Miles	% Poor or Failed	2013 PCI	3YR Moving Average		
				2011	2012	2013
<b>San Mateo</b>	<b>3872</b>	<b>16%</b>	<b>70</b>	70	70	70
Atherton	106	0%	80	79	81	81
Belmont	138	42%	54	58	57	55
Brisbane	53	5%	76	77	77	76
Burlingame	160	5%	77	76	74	75
Colma	24	6%	81	68	70	73
Daly City	254	6%	77	77	78	77
East Palo Alto	80	33%	59	53	55	56
Foster City	120	0%	82	81	81	81
Half Moon Bay	54	16%	68	59	56	60
Hillsborough	166	4%	74	72	73	73
Menlo Park	197	10%	77	68	72	76
Millbrae	125	34%	56	62	61	59
Pacifica	188	39%	56	60	59	58
Portola Valley	71	4%	79	77	78	78
Redwood City	354	4%	76	77	77	76
San Bruno	179	29%	66	63	61	61
San Carlos	175	31%	59	65	63	60
San Mateo	412	13%	74	72	72	73
San Mateo County	623	13%	70	69	69	69
South San Francisco	296	13%	72	72	71	71
Woodside	96	11%	73	58	62	66

- San Mateo County has an average PCI of 70.
- This is down from 71 in 2012.
- 3-year moving average is holding steady

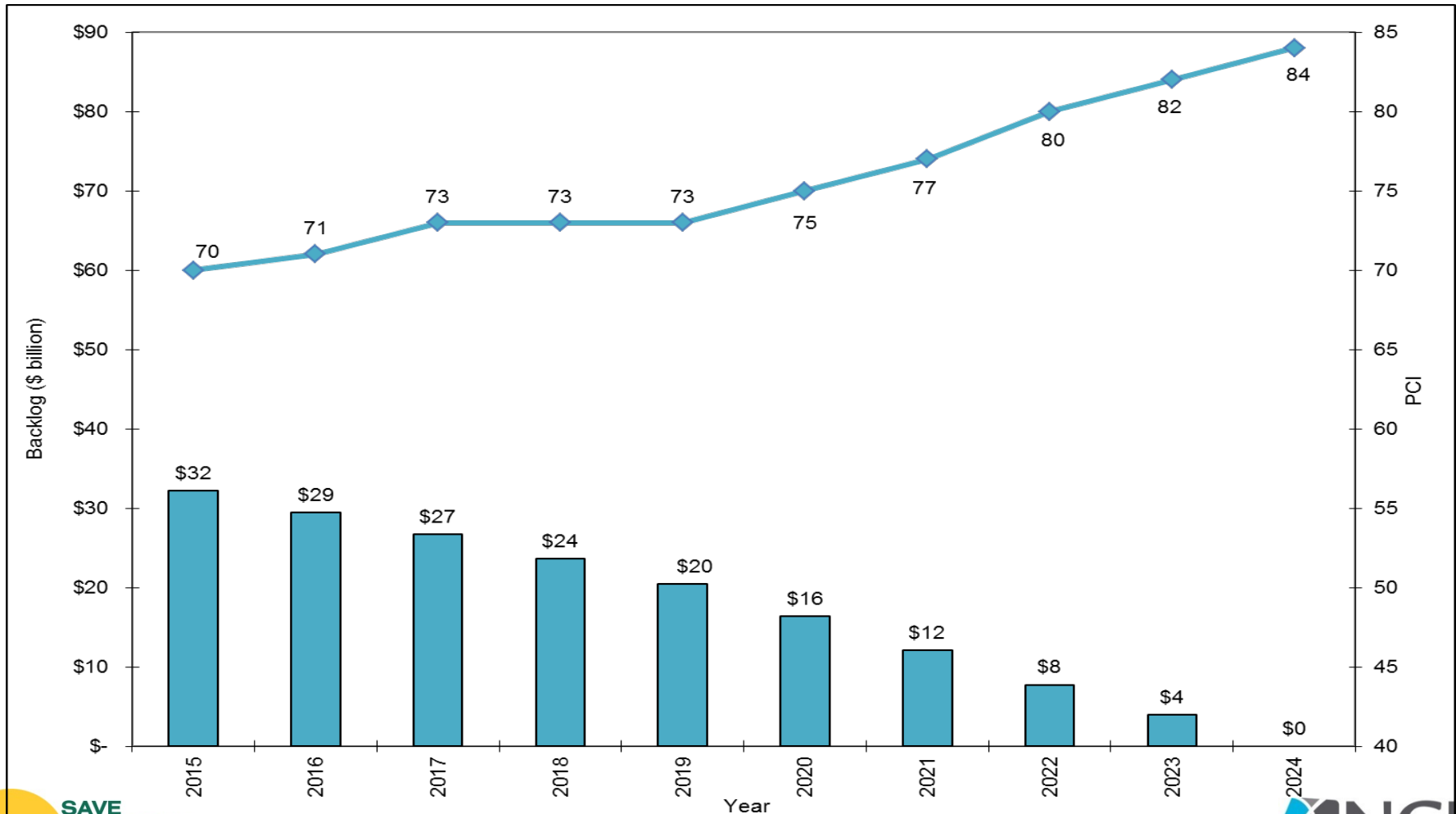


# Funding Strategies for Pavements

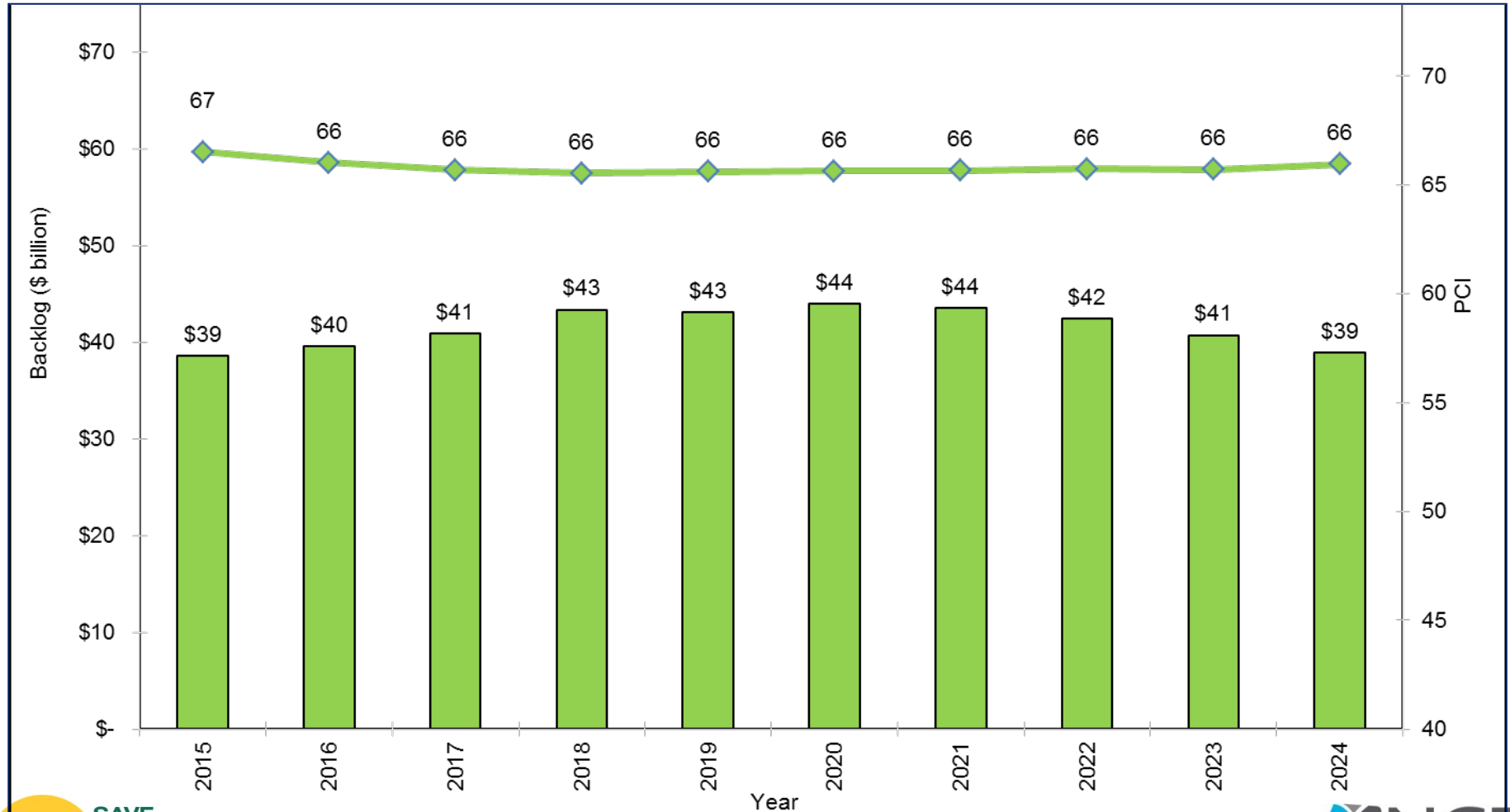


RTPA  
RCTF

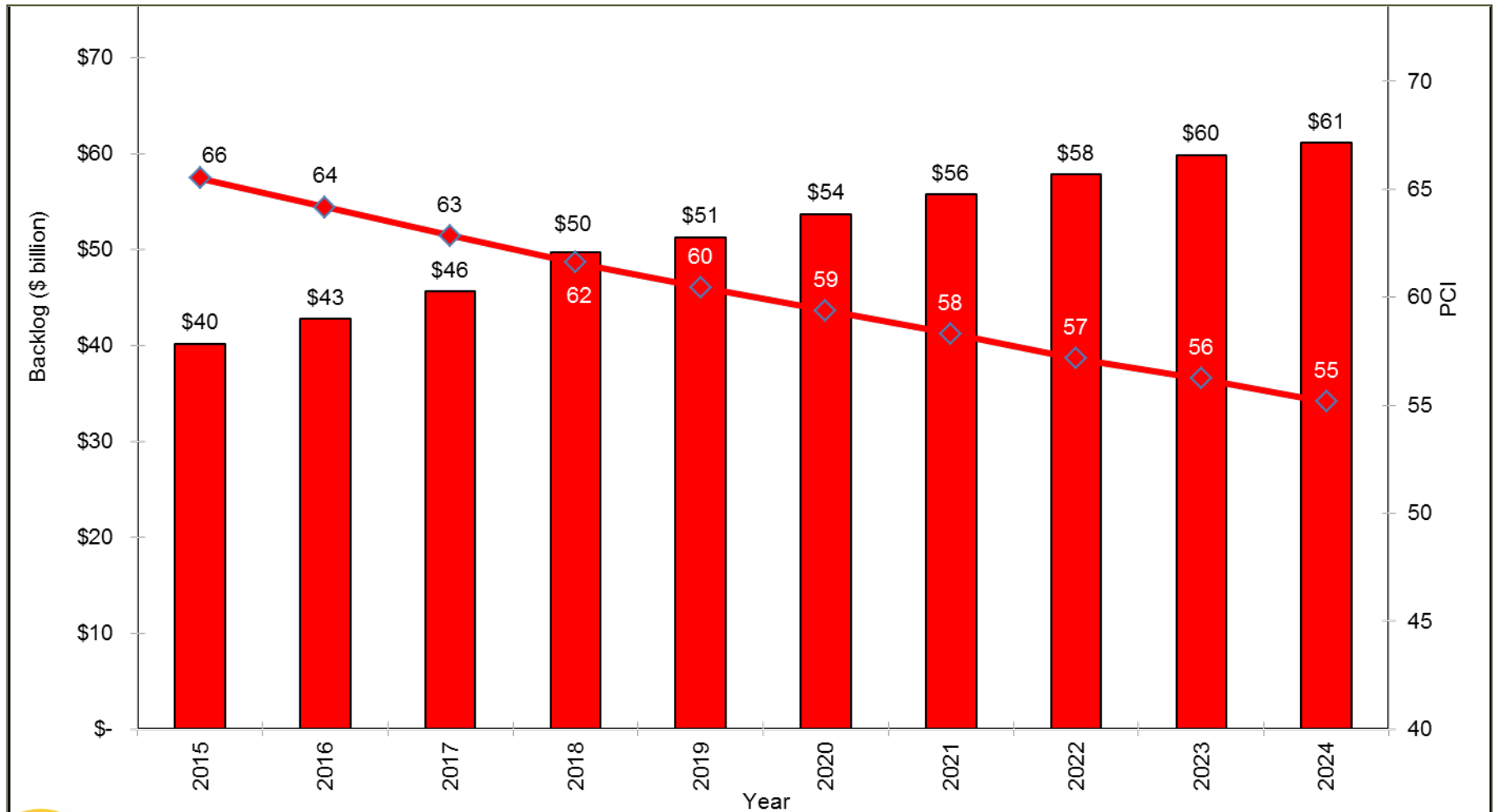
# Reach Best Mgmt Practices (\$7.3 B/year)



# Maintain PCI = 66 (\$3.3 B/year)



# Existing Funding (\$1.66 B/year)



# Sustainable Pavement Strategies

Sustainable Pavement Strategies	No. of Agencies			Average % Savings
	No. of Responses	Savings	Add'l Costs	
Reclaimed AC Pavement (RAP)	129	46	7	11%
Cold in place recycling	69	30	7	30%
Full depth reclamation	102	22	10	32%
Pavt Preservation	223	52	28	35%
Warm mix AC	63	7	8	-
Rubberized AC	187	15	67	-
Porous/Pervious pavements	27	2	6	-

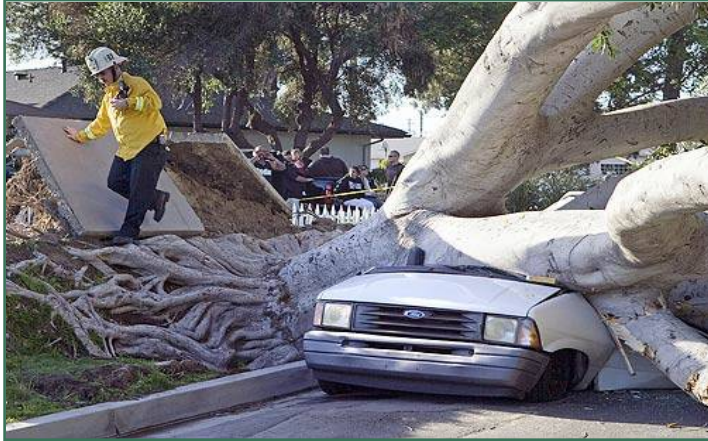
**If just half of eligible projects use CIR/FDR, we can save \$900 million/year!**

# What Happens without New Funding?



**The percent of roads in failed condition will increase from 6.2% to almost 25% by 2024 under current funding**

# It's Not Just Roads and Bridges



- Sidewalks
- Street lights
- Curb ramps
- Signs
- Curb & gutter
- Retaining walls
- Storm drains



# What Are Funding Shortfalls?

Transportation Asset	10 Year Needs (2014 \$B)	Funding	Shortfall
Pavements	\$72.7	\$16.6	\$ (56.1)
Essential Components	\$31.0	\$10.1	\$ (20.9)
Bridges	\$4.3	\$3.0	\$ (1.3)
<b>Totals</b>	<b>\$108.0</b>	<b>\$29.7</b>	<b>\$ (78.3)</b>



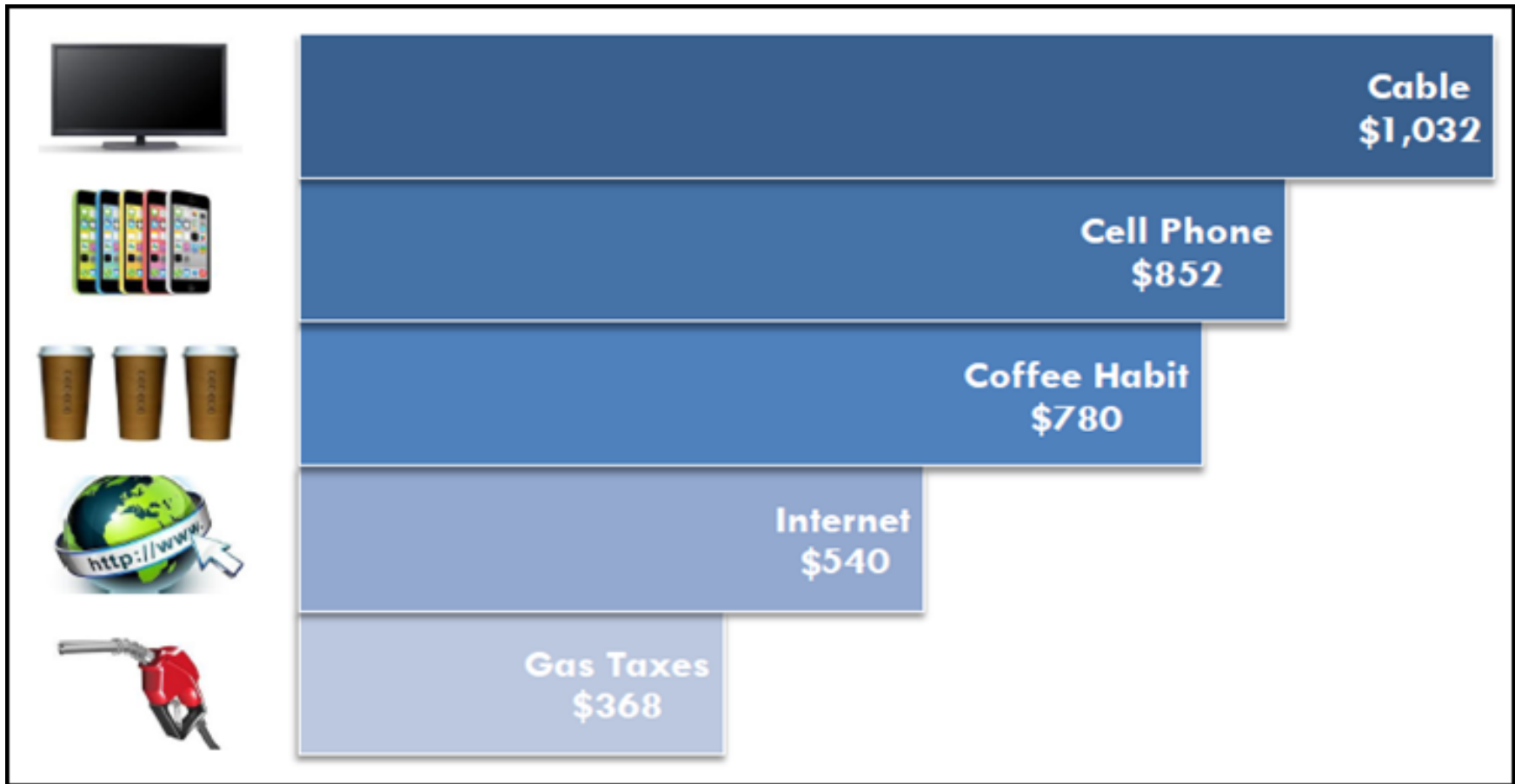
# Funding Needs for San Mateo County

- Plan Bay Area Estimates a 28-Year LS&R Maintenance Need of \$3.9 Billion
  - \$1.9 Pavements
  - \$2.0 Essential Components
- Committed Revenue over the same time period of \$1.4 Billion
- Remaining Need of \$2.5 Billion

# Potential Funding Options

Potential Solutions	Savings/Revenues (\$M/year)
New technologies to stretch existing dollars	\$ 912
Restore gas tax to 1994 levels	\$ 1,700
Index gas tax to CPI (2%)	\$ 48
Raise gas tax by 10 cents/gallon	\$ 1,330
Return weight based fees	\$ 950
Mile-based fee (SB 1077)	Unknown

# Existing State and Federal Gas Tax Compared with Other Items (\$/year)



From: Caltrans Division of Budgets

# Findings

- Local road network is deteriorating, and by 2024:
  - Average PCI will deteriorate from 66 to 55
  - Unfunded backlog will grow to from \$40 to \$61 billion
  - Almost 25% of roads will be in failed condition
  - Similar conclusions for bridges, safety and other essential transportation components
- An additional \$7.8 billion/year is needed

# Conclusions

- Californians and our economy relies on the local transportation system
- New sustainable sources of revenues must be created that are focused on preservation of existing local road network
- Californians need to work together to find ways to fund local streets & roads



# SAVE CALIFORNIA STREETS

Questions?



RTPA  
RCTF

