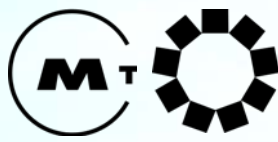


Plan  
BayArea  
2040



**DRAFT PREFERRED SCENARIO:**  
OVERVIEW OF GROWTH PATTERN & INVESTMENT STRATEGY



Image Source: <https://www.flickr.com/photos/adamrschultz/8810617814>

**Ken Kirkey & Matt Maloney, MTC – September 20, 2016**  
**San Mateo County Planning Directors Workshop**

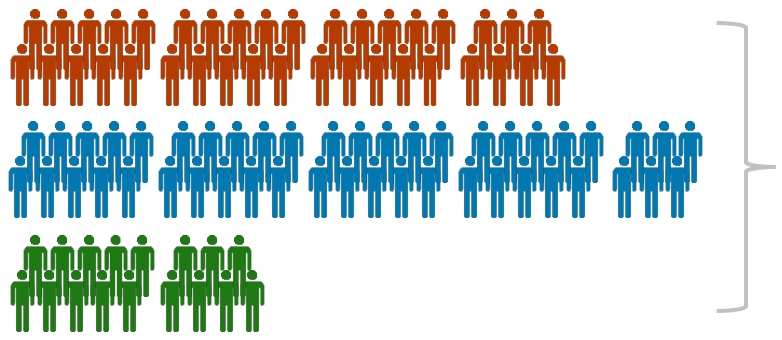
Plan  
BayArea  
2040

**Plan Bay Area 2040 establishes a 24-year regional vision for growth and investment.**

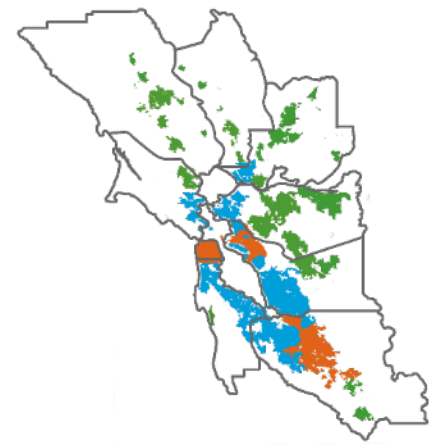


# Our economy is booming – but we're not building enough housing.

Jobs added from 2011 through 2015:  
**501,000**



Housing units built from 2011 through 2015:  
**65,000**



**Big 3 Cities:**  
1 housing unit built for every **7 jobs** created

**Bayside Cities and Towns:**  
1 housing unit built for every **15 jobs** created

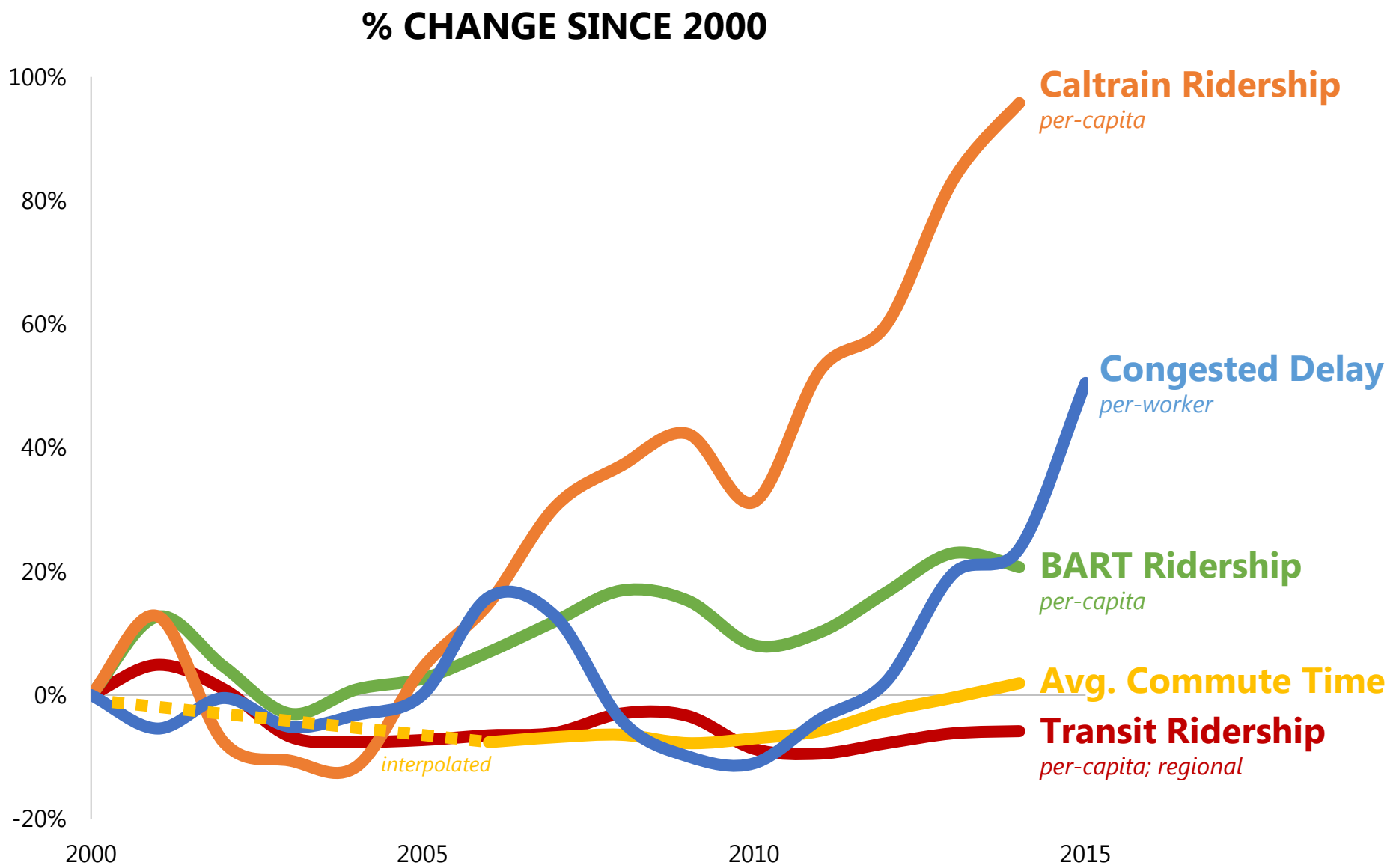
**Inland, Coastal, Delta Cities and Towns:**  
1 housing unit built for every **3 jobs** created

Regionally: 1 house was built for every **8 jobs** created

<http://www.dof.ca.gov/research/demographic/reports/estimates/e-5/2011-20/view.php>



# This current boom is translating into new pressures on our transportation system – even worse than the “dot com” boom.



Source: Vital Signs (MTC 2015; ACS 2014; NTD 2014)

# Funding and policies are available to help us tackle transportation challenges...

	Transportation Strategies	Land Use Strategies
<b>State/ Federal</b>	<ul style="list-style-type: none"> <li>• Generate new state/federal revenues</li> <li>• Fund projects and programs</li> <li>• Condition existing funding sources</li> </ul>	
<b>Regional Agencies</b>	<ul style="list-style-type: none"> <li>• Prioritize high-performing expansion projects</li> <li>• Fund preservation and operation of system</li> <li>• Generate new regional revenues</li> <li>• Condition existing funding sources</li> <li>• Coordinate multi-county transportation programs</li> <li>• Advocate for Bay Area projects at the state and federal levels</li> </ul>	
<b>Local Agencies</b>	<ul style="list-style-type: none"> <li>• Build transportation projects</li> <li>• Improve efficiency of operations and maintenance activities</li> <li>• Generate new local revenues</li> <li>• Condition local revenues</li> <li>• Advocate for local projects at the regional, state, and federal levels</li> </ul>	
<b>Other</b>	<ul style="list-style-type: none"> <li>• <b>Private Companies:</b> operate private shuttles and provide TNC service</li> </ul>	

# ... but solving our land use and affordability challenges is much more difficult.

	Transportation Strategies	Land Use Strategies
<b>State/ Federal</b>	<ul style="list-style-type: none"> <li>• Generate new state/federal revenues</li> <li>• Fund projects and programs</li> <li>• Condition existing funding sources</li> </ul>	<ul style="list-style-type: none"> <li>• Reform tax policies (including redevelopment)</li> <li>• Subsidize affordable housing</li> <li>• Streamline regulatory processes (e.g., CEQA reform)</li> </ul>
<b>Regional Agencies</b>	<ul style="list-style-type: none"> <li>• Prioritize high-performing expansion projects</li> <li>• Fund preservation and operation of system</li> <li>• Generate new regional revenues</li> <li>• Condition existing funding sources</li> <li>• Coordinate multi-county transportation programs</li> <li>• Advocate for Bay Area projects at the state and federal levels</li> </ul>	<ul style="list-style-type: none"> <li>• Condition existing funding sources</li> <li>• Implement new regional development fees</li> </ul> <p style="text-align: center;"><i>Fewer regional policies available today than for transportation</i></p>
<b>Local Agencies</b>	<ul style="list-style-type: none"> <li>• Build transportation projects</li> <li>• Improve efficiency of operations and maintenance activities</li> <li>• Generate new local revenues</li> <li>• Condition local revenues</li> <li>• Advocate for local projects at the regional, state, and federal levels</li> </ul>	<ul style="list-style-type: none"> <li>• Change zoning</li> <li>• Change fees and subsidies for development</li> <li>• Streamline approval processes</li> <li>• Implement inclusionary policies</li> <li>• Adjust urban growth boundaries</li> <li>• Build infrastructure to support growth (e.g., sewer/water, schools, etc.)</li> </ul>
<b>Other</b>	<ul style="list-style-type: none"> <li>• <b>Private Companies:</b> operate private shuttles and provide TNC service</li> </ul>	<ul style="list-style-type: none"> <li>• <b>Developers:</b> build new residential, commercial, and industrial buildings (<i>both market-rate and affordable</i>)</li> </ul>

# Working within these constraints – and keeping this update limited and focused – we achieve 5 of the 13 ambitious targets.

## SUMMARY OF THE DRAFT PREFERRED SCENARIO PERFORMANCE TARGET RESULTS

Performance targets highlighted in this presentation are marked with an asterisk (\*).

Refer to **Attachment A** of the performance item for detailed results.

Note that target results are subject to change as scenarios are further refined this fall, and as scenarios are ultimately analyzed against the 2040 horizon year.

### TARGET ACHIEVED (5)



**Climate Protection\***



Adequate Housing



**Open Space and Agricultural Preservation\***



Middle-Wage Job Creation



**Goods Movement/ Congestion Reduction\***

### RIGHT DIRECTION (5)



Healthy and Safe Communities



Affordable Housing



**Non-Auto Mode Shift\***



**Road Maintenance\***



Transit Maintenance

### WRONG DIRECTION (3)



**Housing + Transportation Affordability\***



**Displacement Risk\***



Access to Jobs

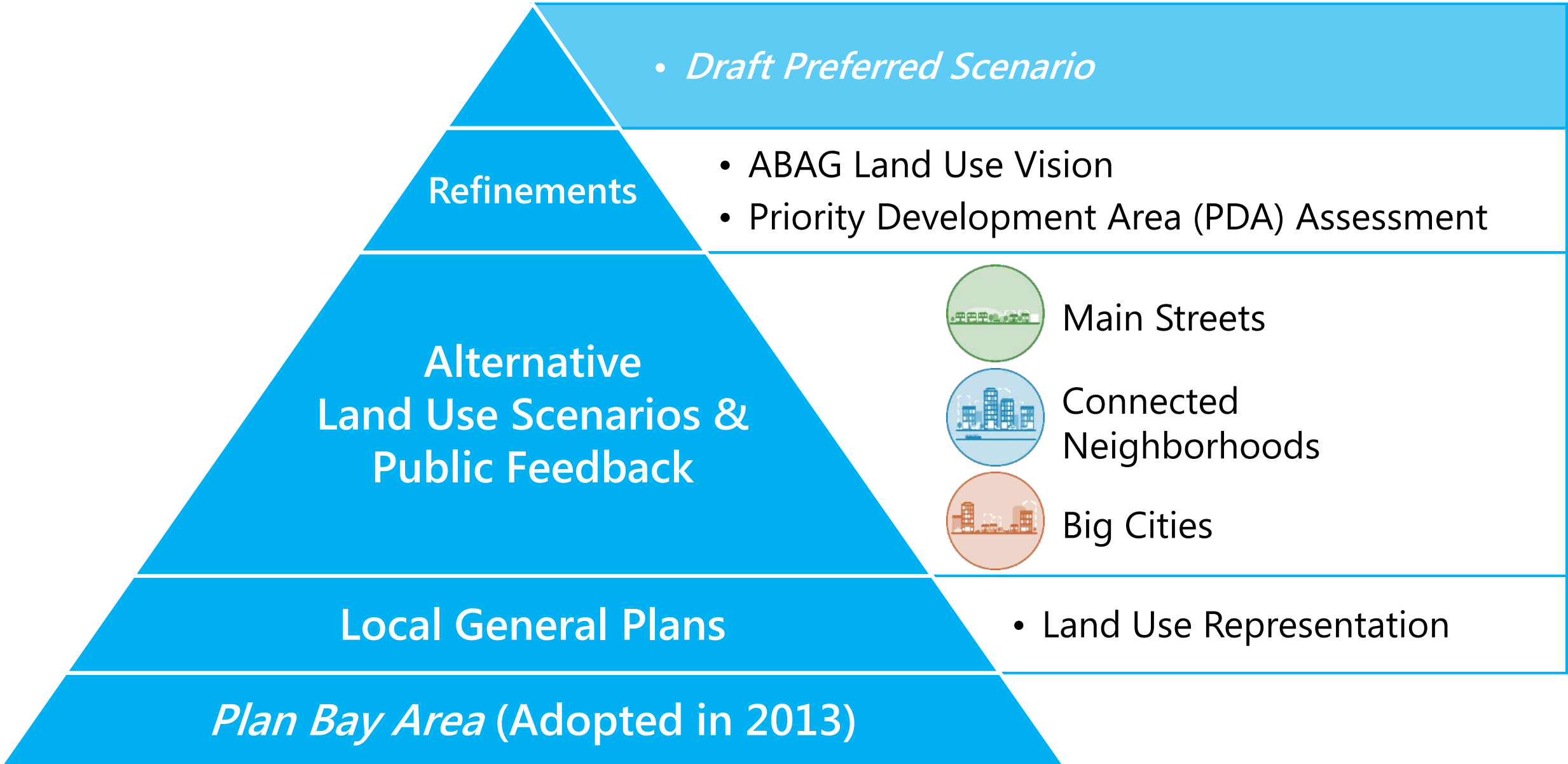
Plan  
BayArea  
2040

Identifying a feasible pattern for regional growth was the first step in crafting the Draft Preferred Scenario.





# The Draft Preferred Scenario builds on *Plan Bay Area*.



# What is UrbanSim?

- Land use model forecasting likely future development patterns
- Considers a range of information for each land parcel in the Bay Area:
  - Allowable uses
  - Allowable intensity
  - Prohibitions
  - Developer profitability

# Data Sources for 2010 base year

## 2010 Households

- U.S. Census Bureau
- Consistent at Census Block Group Totals

## 2010 Employment

- Employment Development Department
- Consistent at County Totals
- Spatial distribution within county based on Dunn & Bradstreet data

# Land use strategies influence the location of future housing and jobs.

The **Draft Preferred Scenario** has the following key strategies for land use:



Keep **current urban growth boundaries** in place.



Apply **inclusionary zoning** in all cities with PDAs.



Assume for-profit housing developments make **10 percent of units deed-restricted** in perpetuity.



Assign **higher densities** than currently allowed by cities in select PDAs.



Reduce the cost of building in PDAs and TPAs through **eased parking minimums** and **streamlined environmental clearance**.

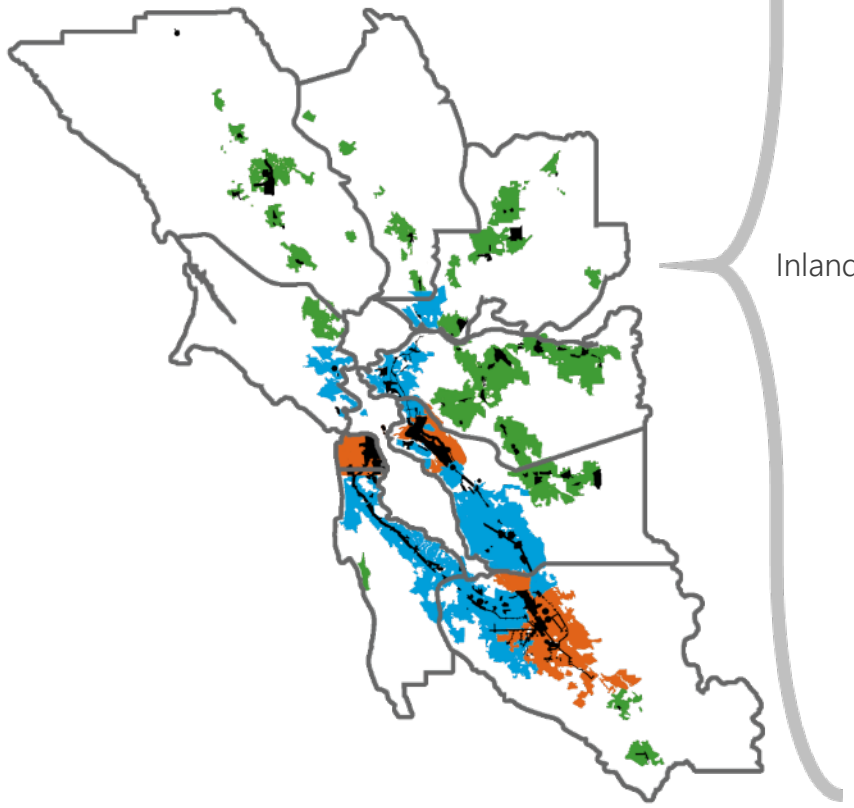


Assume **subsidies** stimulate housing and commercial development within PDAs.



# Similar to *Plan Bay Area*, the Draft Preferred focuses growth in the core of the region.

## Where will the region plan for the 820,000 new households?



Big 3 Cities



Bayside



Inland, Coastal, Delta



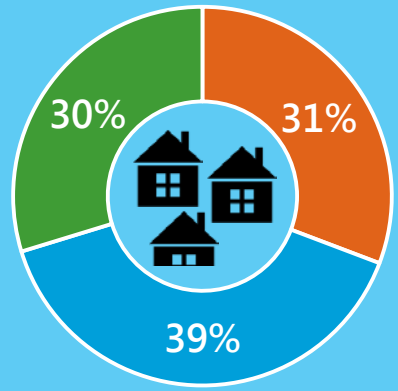
in PDA



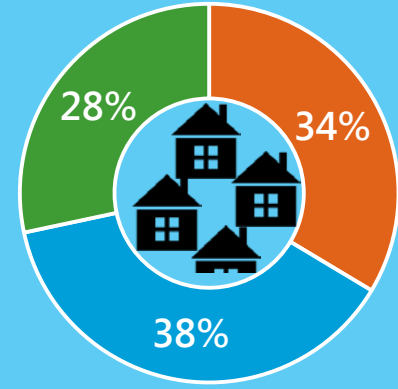
outside PDA



2010: **2.6 million** households

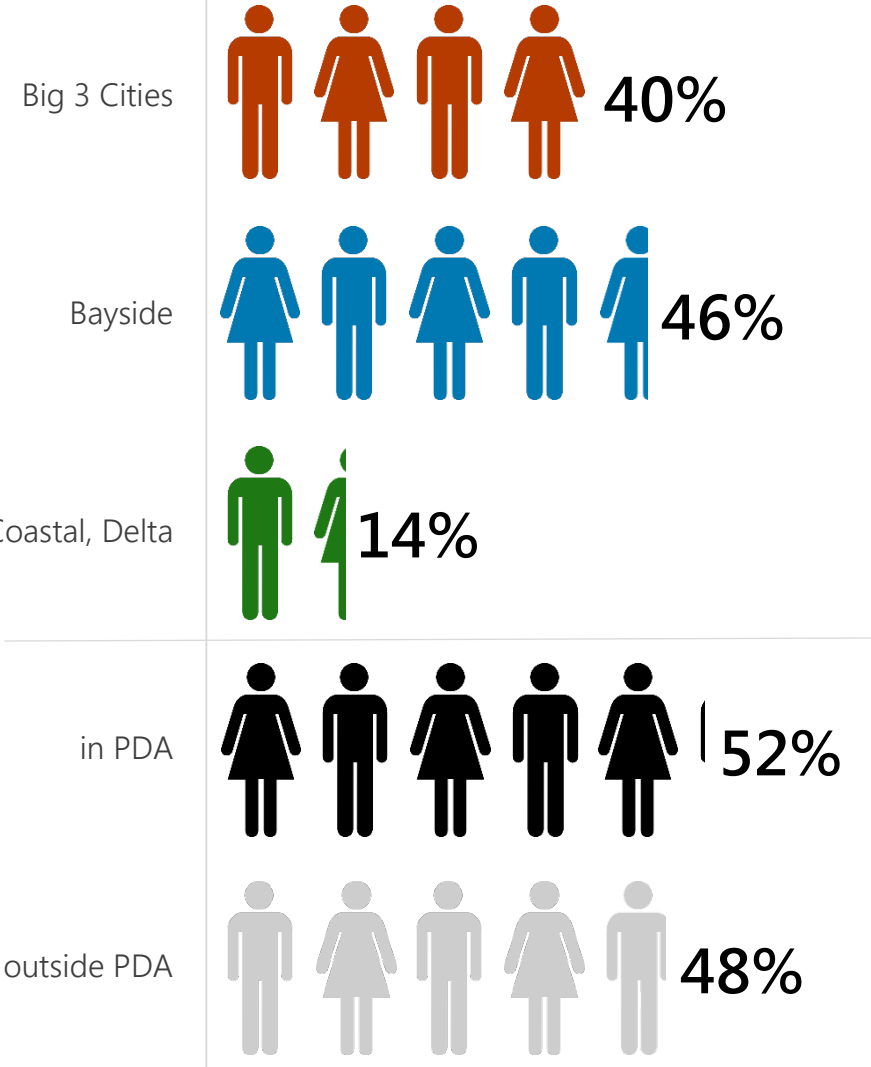
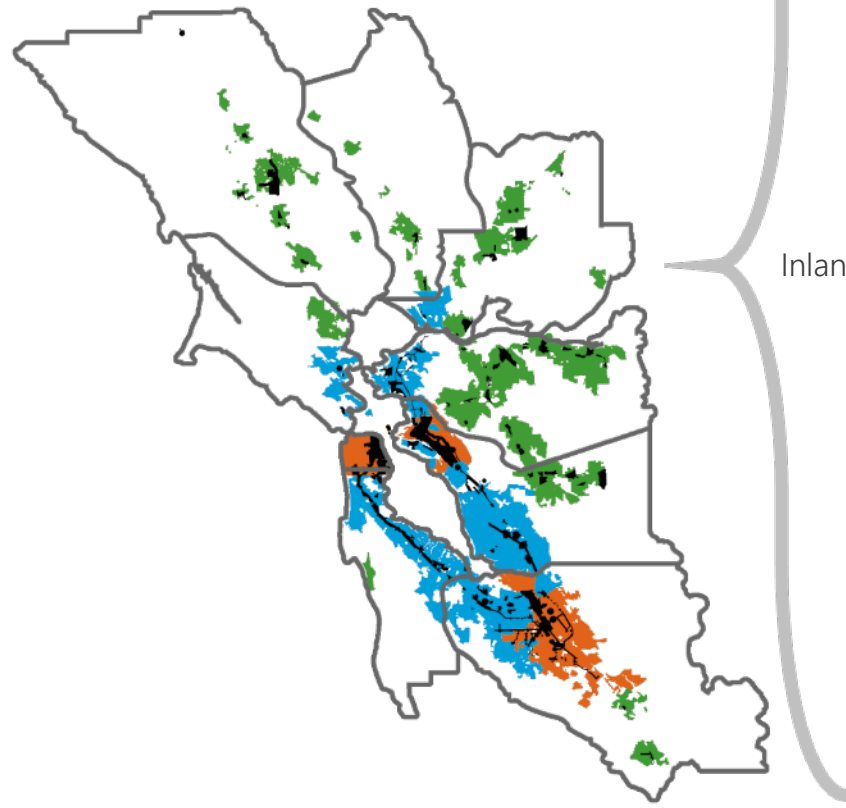


2040: **3.4 million** households

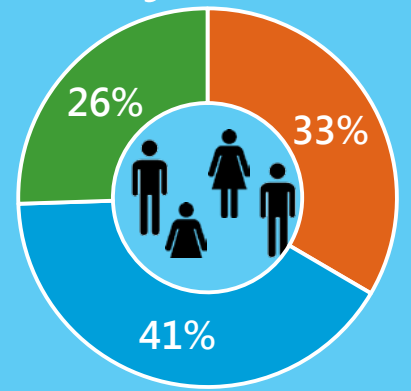


# Fewer strategies exist to encourage shifts in job locations – meaning that the West Bay and South Bay remain primary centers.

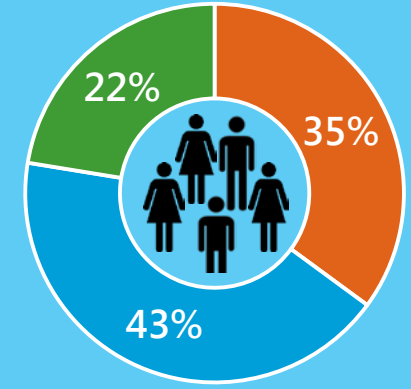
Where will the region plan for the 1.3 million new jobs?



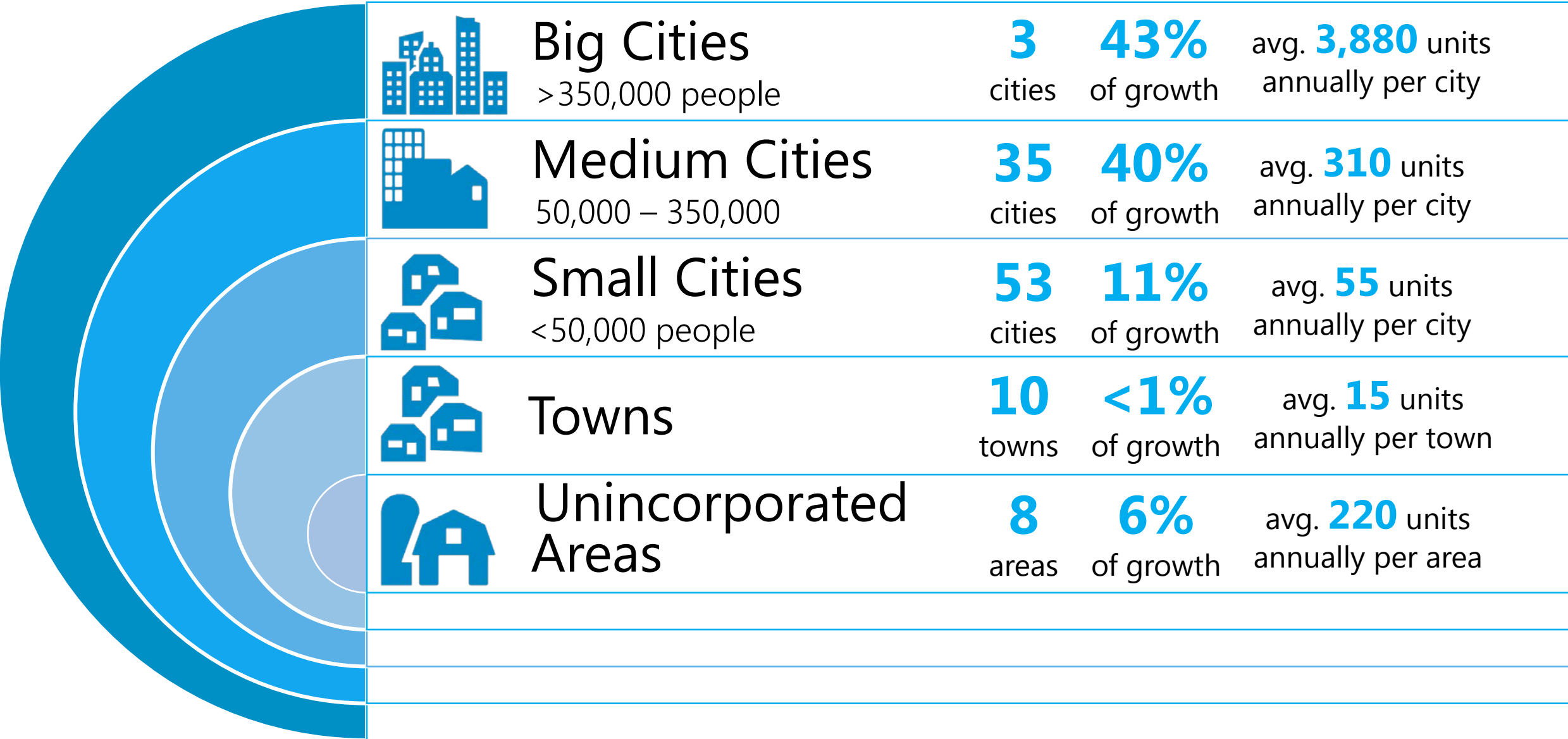
2010: **3.4 million** jobs



2040: **4.7 million** jobs



# Local jurisdiction support is critical to realize the goals of Plan Bay Area 2040.







# More information for local jurisdictions interested in detailed forecasts is publicly available.

<b>County</b>	<b>Households 2010</b>	<b>Households 2040</b> (Forecast)	<b>Employment 2010</b>	<b>Employment 2040</b> (Forecast)
Alameda	548,000	725,000	706,000	978,000
Contra Costa	376,000	491,000	360,000	473,000
Marin	104,000	116,000	121,000	138,000
Napa	49,000	56,000	71,000	79,000
San Francisco	347,000	476,000	577,000	888,000
San Mateo	257,000	316,000	343,000	475,000
Santa Clara	597,000	847,000	912,000	1,270,000
Solano	142,000	170,000	130,000	157,000
Sonoma	187,000	231,000	203,000	241,000
<b>Total</b>	<b>2,607,000</b>	<b>3,427,000</b>	<b>3,422,000</b>	<b>4,699,000</b>



# The Draft Preferred land use pattern meets our environmental goals, but it does not solve the region's affordability issues.

Goal	TARGET		No Project	Main Streets	Connected Neighbor.	Big Cities	Draft Preferred
 Climate Protection	<b>1</b> Reduce per-capita CO <sub>2</sub> emissions	-15%	-5%	-15%	-18%	-20%	-18%
 Open Space and Agricultural Preservation	<b>4</b> Direct development within urban footprint	100%	87%	91%	100%	100%	100%
 Equitable Access	<b>5</b> Decrease H+T share for lower-income households*	-10%	+14%	+13%	+13%	+13%	+13%
 Equitable Access	<b>7</b> Do not increase share of households at risk of displacement*	+0%	+18%	+11%	+13%	+15%	+9%



\* = indicates that performance results analysis year 2035; final target results will reflect consistent horizon year of 2040

Plan  
BayArea  
2040

The Draft Preferred Scenario supports focused growth by prioritizing transportation operations, maintenance, and modernization.



# Fortunately, the region has significant resources for improving our transportation system – especially voter-approved sales taxes.

## Revenue Envelope for Plan Bay Area 2040

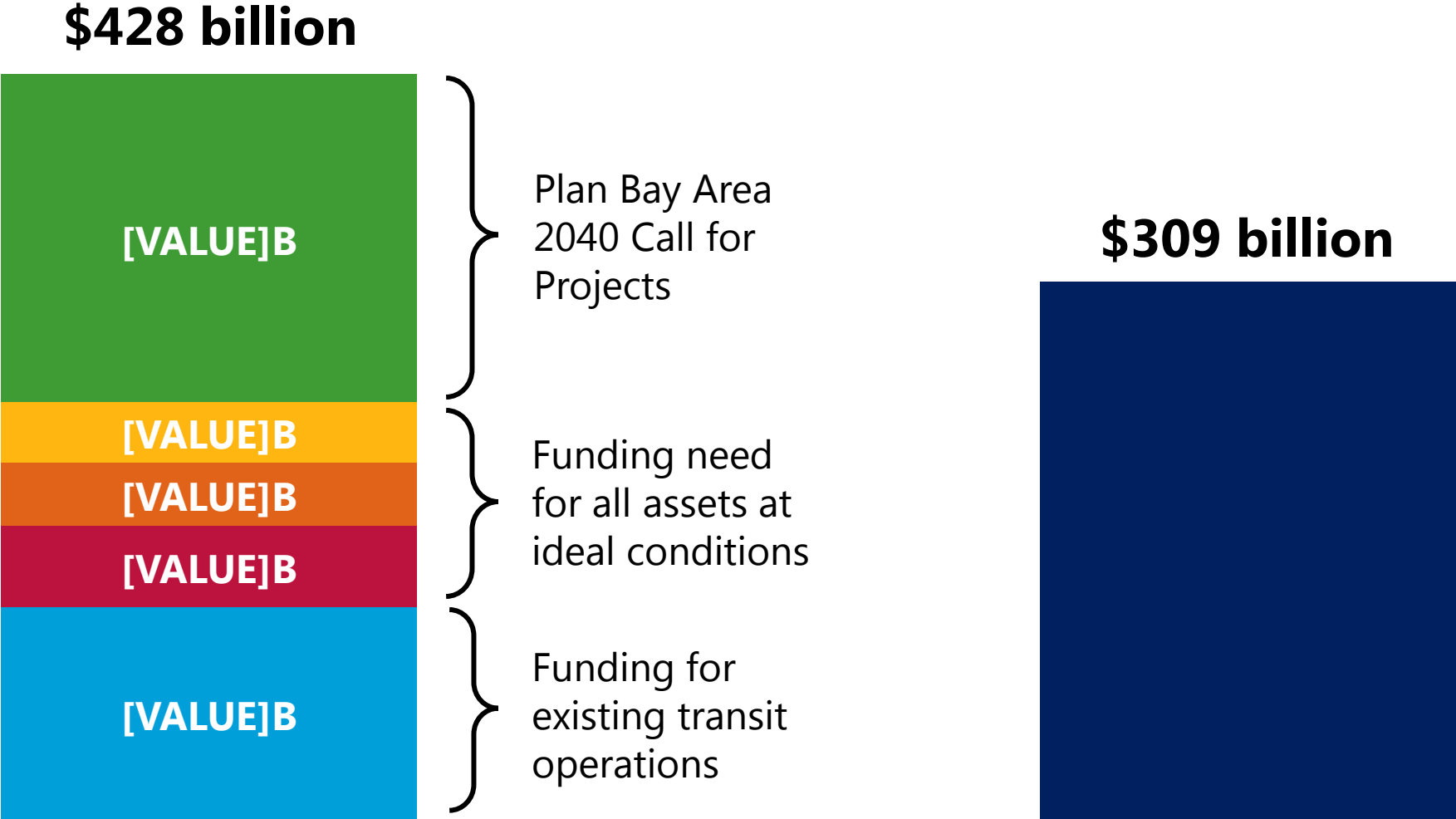
■ Federal   ■ State   ■ Regional   ■ Local   ■ Anticipated   ❖ 2016 Transportation Ballot Measures



**\$309 billion**  
Year of Expenditure \$



# Due to fiscal constraints, it was not possible to achieve ideal maintenance conditions and to fund all projects submitted.



Funding Need

Available Revenue

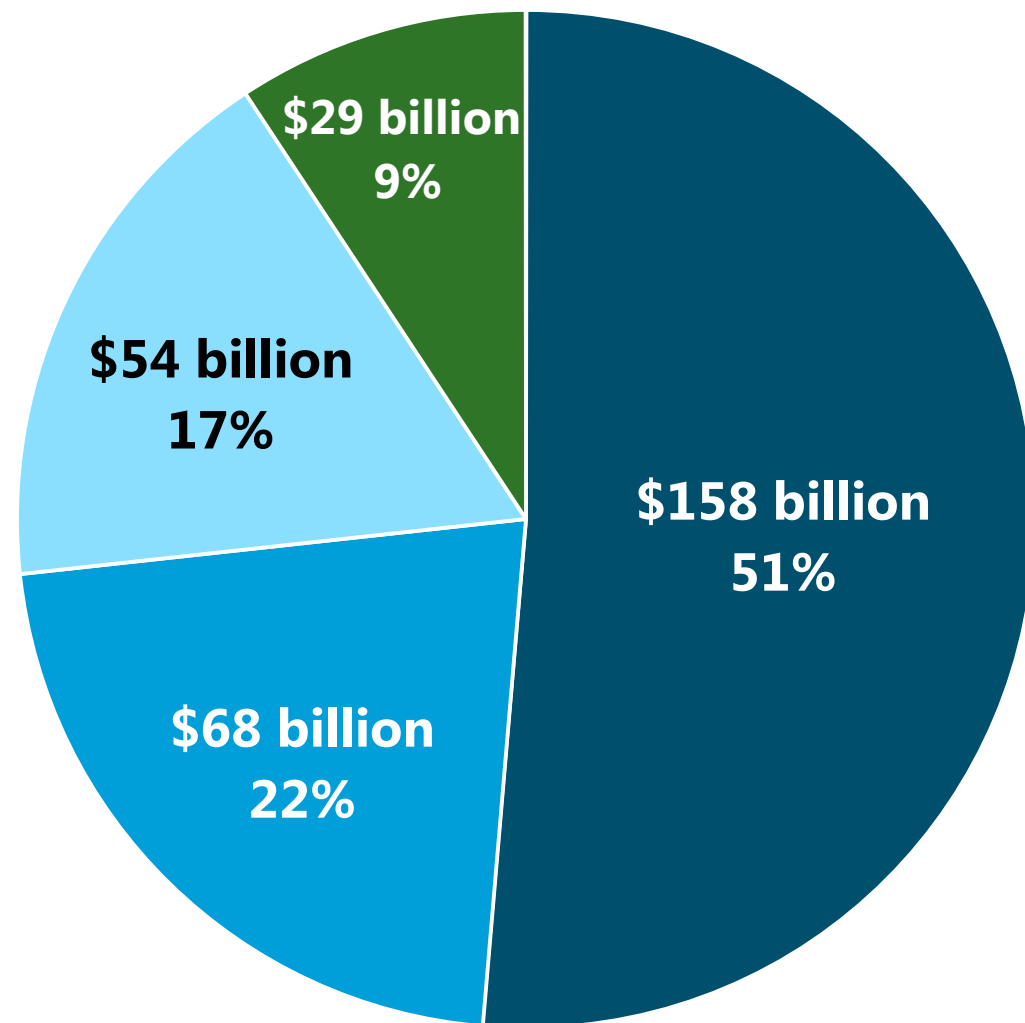
- Transit Operations
- Transit Capital (Ideal)
- Local Streets (Ideal)
- Highways/Bridges (Ideal)
- Projects
- Available Revenue

# The Draft Preferred Scenario allocates over 90 percent of funds towards maintenance and modernization, similar to Plan Bay Area.

**Total Plan Bay Area 2040 Expenditures**  
(in billions of \$YOE)

**91%**  
**Operate, Maintain,  
and Modernize**

**9%**  
**Expand Existing  
System**



- Operate and Maintain - Transit
- Operate and Maintain - Roads/Freeways/Bridges
- Modernize
- Expand

# Operating and maintaining the existing system remains our top priority, despite its high costs.

Category	Current Conditions (2015)	Draft Preferred (2040)
Transit Operations	<i>Fully funds preservation of current service levels through 2040</i>	
Transit Maintenance	<b>29%</b> of transit assets past useful life	<b>12%</b> of transit assets past useful life
Local Road Maintenance	Pavement condition index of <b>66</b>	Pavement condition index of <b>69</b>
Highway Maintenance	<b>20%</b> of highway lane-miles in poor condition	<b>20%</b> of highway lane-miles in poor condition

## Strategy 1:

Operate and Maintain  
**\$226 billion** (73%)

### Includes:

- Transit Operations (\$122 billion)
- Transit Maintenance (\$31 billion)
- Local Streets Maintenance (\$25 billion)
- Bridge Maintenance (\$14 billion)

# Modernization of existing transit system and highways is a high priority as well.



## Strategy 2: Modernize **\$54 billion** (17%)

### Includes:

- Core Capacity (\$7 billion)
- Bike/Ped Program (\$3 billion)
- Goods Movement Program (\$3 billion)
- Caltrain Electrification (\$2 billion)
- Mobility and Access Program (\$2 billion)
- BART Metro (\$1 billion)



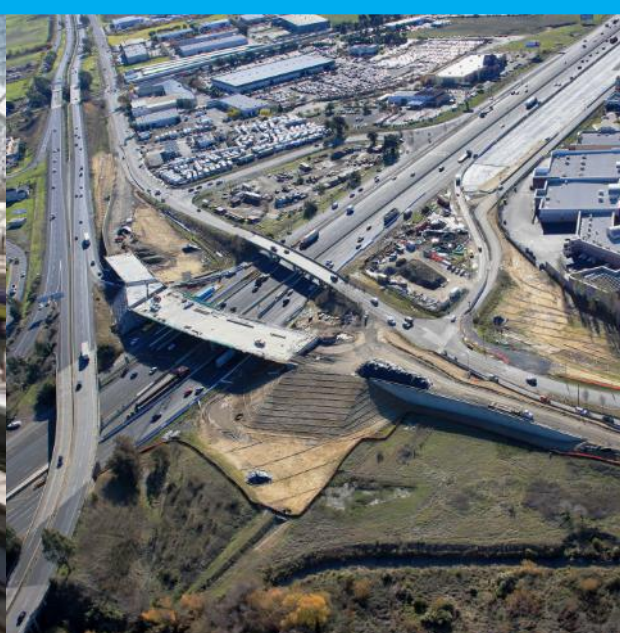
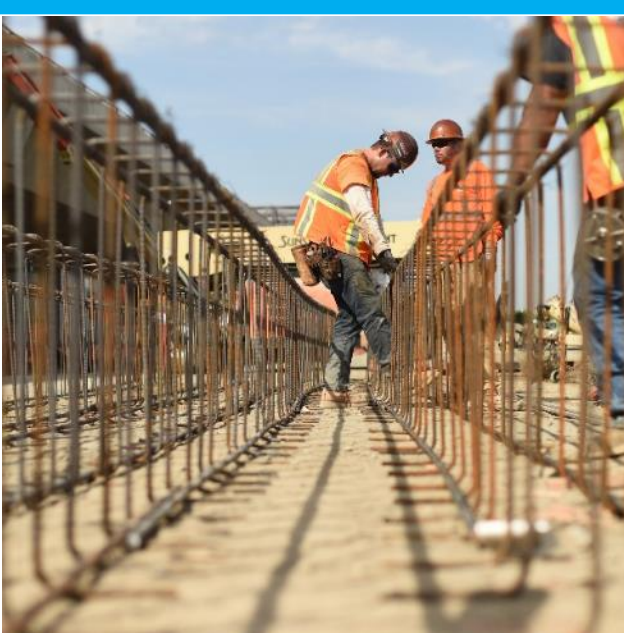
# The share of funding allocated towards expansion projects continues to decline – focusing primarily on high-performers.



## Strategy 3: Expand **\$29 billion** (9%)

### Includes:

- High Speed Rail in Bay Area (\$8 billion)
- BART to San Jose (\$5 billion)
- Caltrain Downtown Extension (\$4 billion)
- Silicon Valley Express Lanes: SR-85 + US-101 (\$2 billion)





# The Draft Preferred Scenario includes specific strategies for equity.



Fund existing bus operations through 2040

**\$62 billion**



Fund bus service increases and transit improvements

**\$5 billion**



Fund Lifeline Program and County Access Initiatives





**\$2 billion**



Assume **increases in inclusionary zoning** within Priority Development Areas



# Performance results for transportation are generally positive but fall short on several key targets.

Goal	TARGET	No Project	Main Streets	Connected Neighbor.	Big Cities	Draft Preferred	
 Climate Protection	<b>1</b> Reduce per-capita CO <sub>2</sub> emissions	-15%	-5%	-15%	-18%	-20%	-18%
 Economic Vitality	<b>10</b> Reduce per-capita delay on freight network	-20%	+14%	-22%	-14%	-35%	-28%
 Transportation System Effectiveness	<b>11</b> Increase non-auto mode share*	+10%	+2%	+2%	+3%	+4%	+3%
 Transportation System Effectiveness	<b>12</b> Reduce vehicle O&M costs due to pavement conditions*	-100%	+46%	-66%	-9%	+15%	-16%

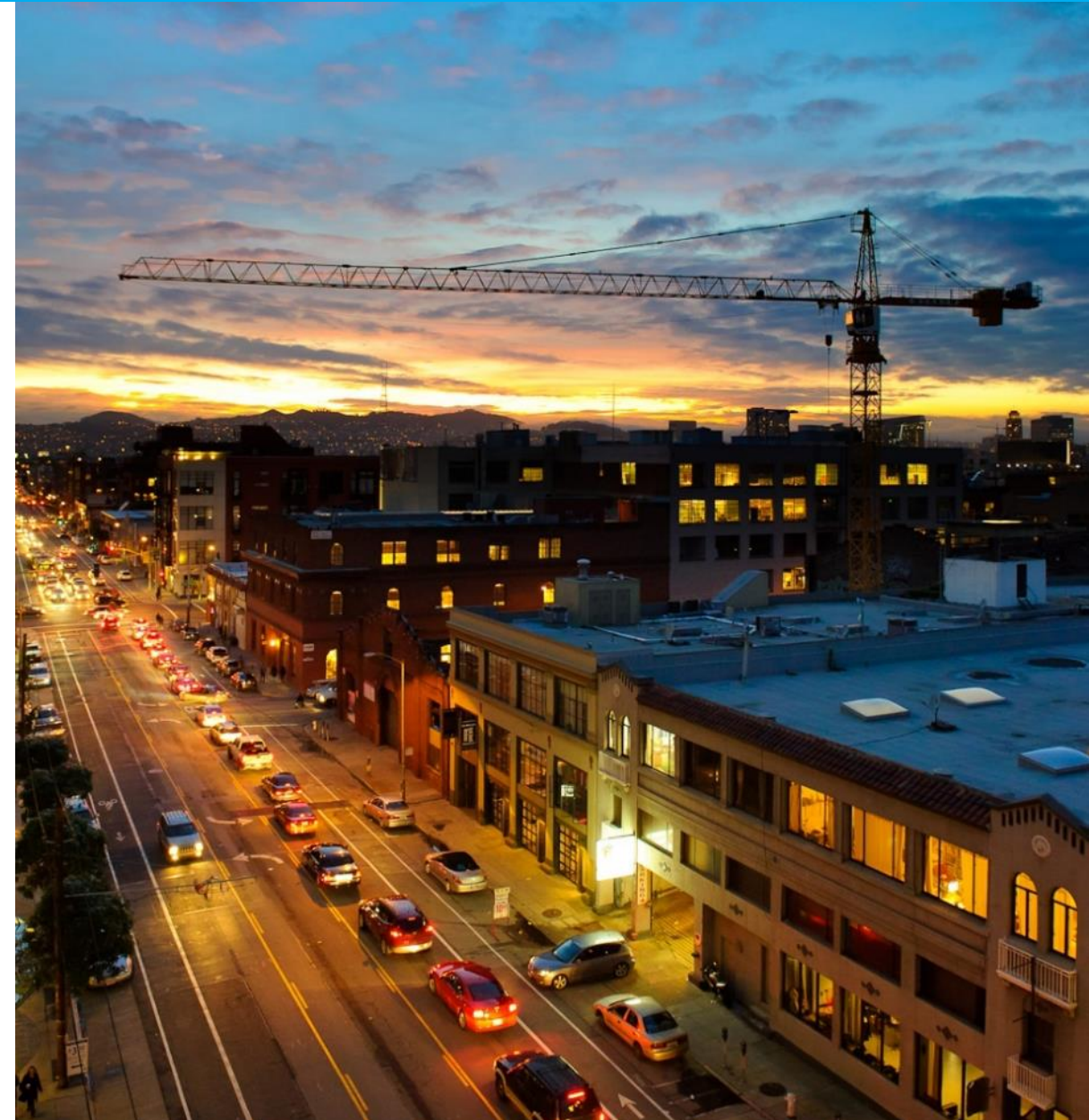
\* = indicates that performance results analysis year 2035; final target results will reflect consistent horizon year of 2040



# Despite its limitations, the Draft Preferred Scenario does perform notably better than the status quo (No Project).

## Compared to the No Project:

- The Draft Preferred Scenario achieves **13 additional percentage points** of per-capita greenhouse gas reduction, primarily due to the Climate Initiatives Program.
- **Nearly 12,000 fewer acres** of greenfield lands are developed in the Draft Preferred Scenario.
- **63,000 fewer households** are at risk of displacement in PDAs, TPAs, and HOAs in the Draft Preferred Scenario.
- The typical driver spends **\$124 less per car** on auto maintenance due to smoother local streets in the Draft Preferred Scenario.



# Plan BayArea 2040

**If we really want to address affordability and equity challenges, action is needed by an engaged public and by all levels of government. Only the most aggressive policies will be sufficient to deal with our housing crisis.**

Housing +  
Transportation  
Costs  
(as a share of  
income)\*

**54%**  
of  
household  
income

**2005**

**Housing: +12%**

Transportation:  
+1%

**Housing + Transportation: +13%**

**67%**  
of  
household  
income

**2040**

\* = for lower-income households

We want your feedback on how to craft the best Preferred Scenario possible.

### September

- Hold County Workshops with Planning Directors

### October

- Comments on Draft Preferred Due **(October 14)**
- Revise Preferred Scenario

### Fall

- Adopt Revised Preferred Scenario
- Begin CEQA Review

### Spring 2017

- Release Draft Plan
- Release Draft EIR

### Summer 2017

- Adopt Plan Bay Area 2040
- Certify EIR