

The logo for samTrans, featuring the text "samTrans" in a bold, black, sans-serif font. Below the text are two horizontal bars: a red one on top and a blue one on the bottom. The logo is set against a white background with a thin black border.

samTrans

The background of the slide is a blue-tinted photograph of a samTrans bus. The bus is white with blue and red accents. The number "295" is visible on the top right of the windshield, and "644" is on the front. The text "samTrans" is visible on the front of the bus. The bus is parked on a street.

Dumbarton Transportation Corridor Study

**C/CAG Congestion Management and
Environmental Quality Committee**

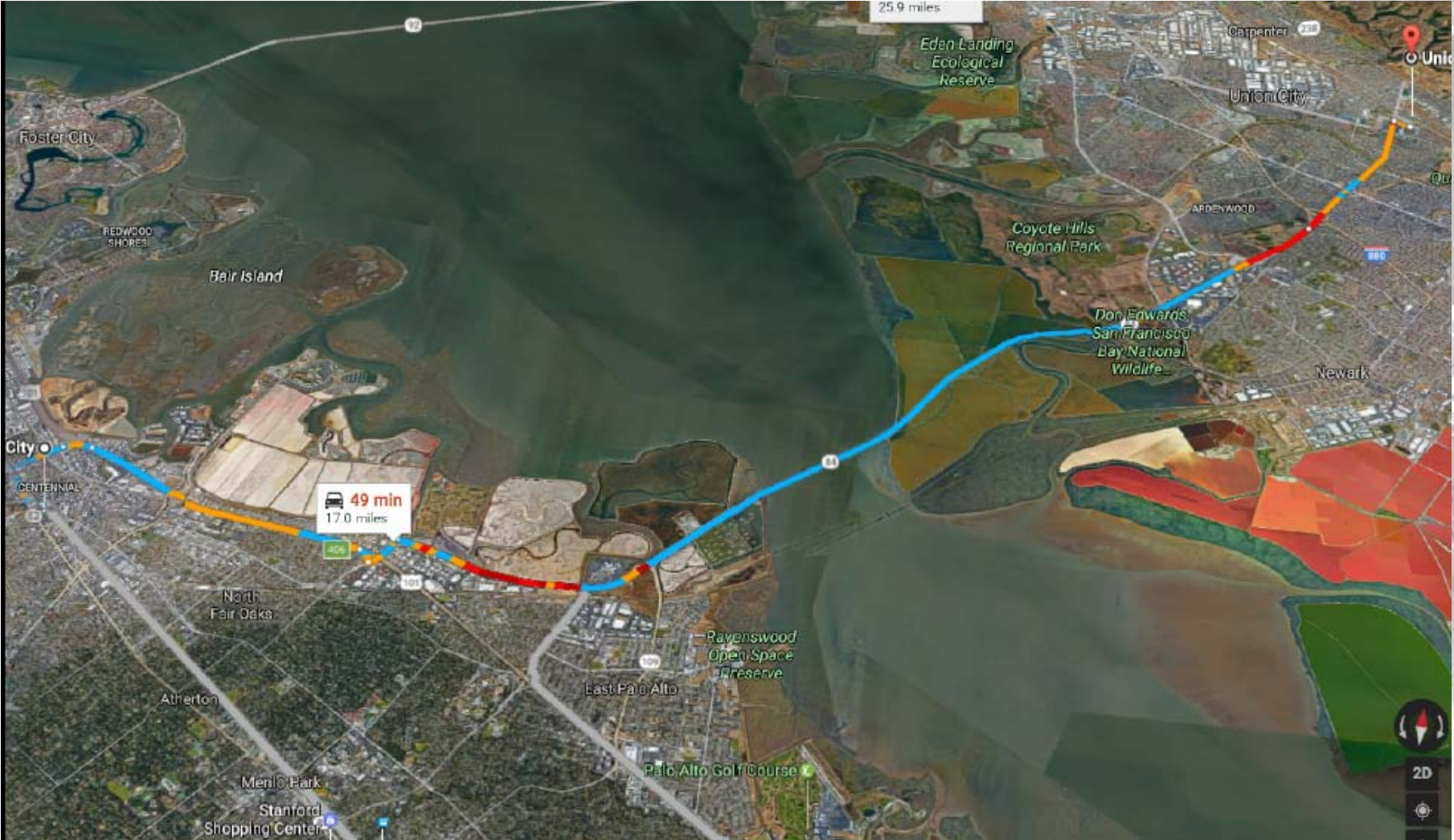
October 30, 2017

Two Bridges

samTrans



Complex Corridor



- **Corridor requires phased improvements**
- **Solutions require consensus, other approvals**
 - Rail bridge: FTA, Coast Guard, Union Pacific, etc.
 - Highway bridge: Caltrans, MTC/BATA
 - Approaches: Caltrans, cities
- **Funding challenges/opportunities**
 - Public funding, private sector, P3 financing
- **Other challenges/value**
 - Environmental, connecting to other rail lines

Comparative Analysis of Alternatives

samTrans

- Enhance mobility
- Cost effectiveness
- Minimize environmental impacts, financial risk and maximize safety
- Protect local communities from adverse impacts

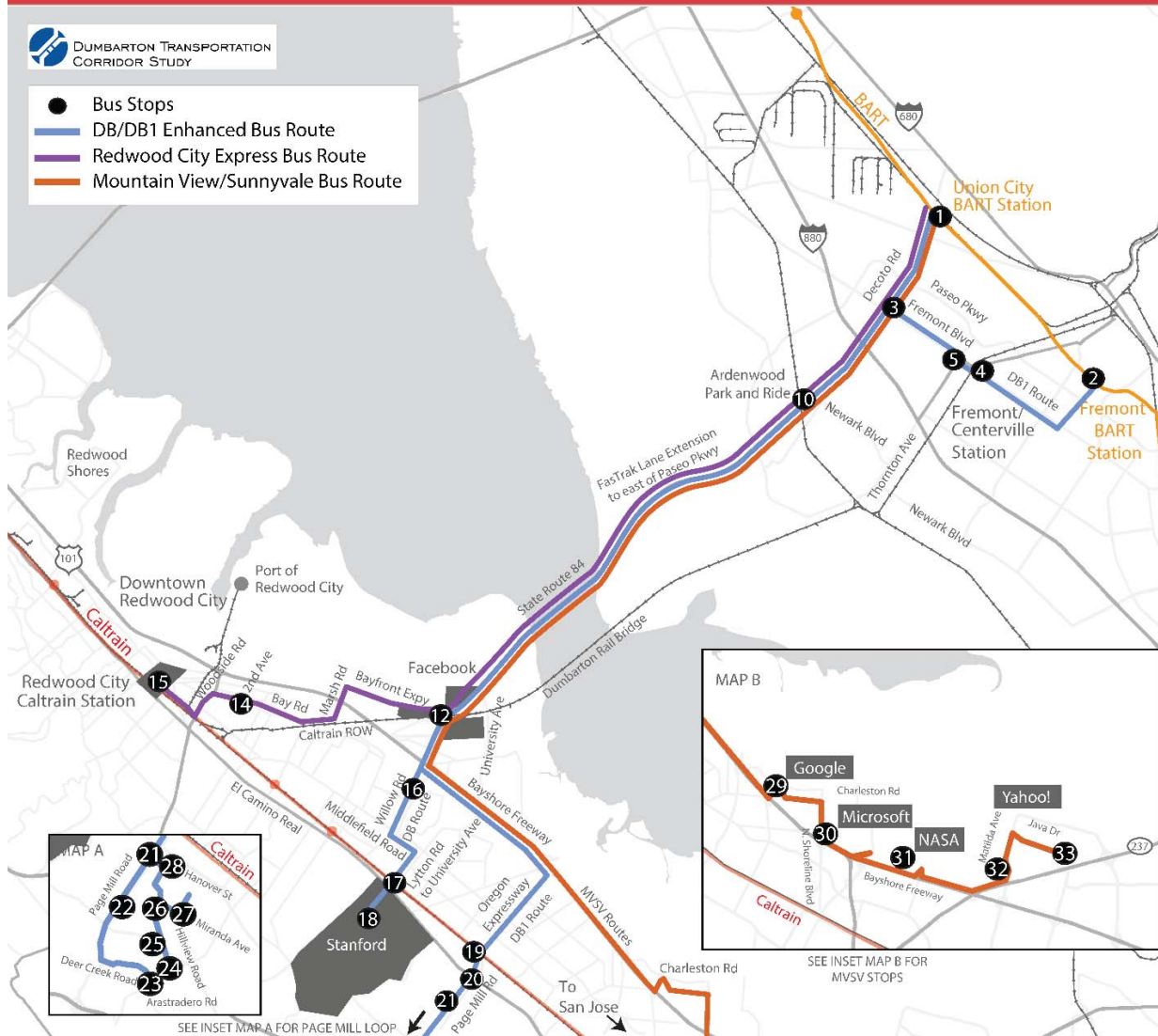
Alternatives Studied and Draft Recommendations

2020: Bus and Approach Improvements on Highway Bridge

samTrans

DUMBARTON TRANSPORTATION CORRIDOR STUDY

- Bus Stops
- DB/DB1 Enhanced Bus Route
- Redwood City Express Bus Route
- Mountain View/Sunnyvale Bus Route



2020: Bus and Approach Improvements (Recommended)

samTrans

- **Short-term (2020)**
 - Expand Dumbarton Express bus on Highway Bridge
 - Approach improvements
- **Impact**
 - \$51m capital, \$12m O/M
 - 13,700 daily transbay riders (34% increase)



- **Short-term (2020)**
- **Bike/ped multi-use path from Redwood City to East Palo Alto**
 - Overpasses at Willow, Marsh, University, US-101
- **Impact**
 - \$60m capital (includes overpasses at Willow, Marsh, University and US-101), ~\$53,000 O/M

Recommendations 2020

samTrans

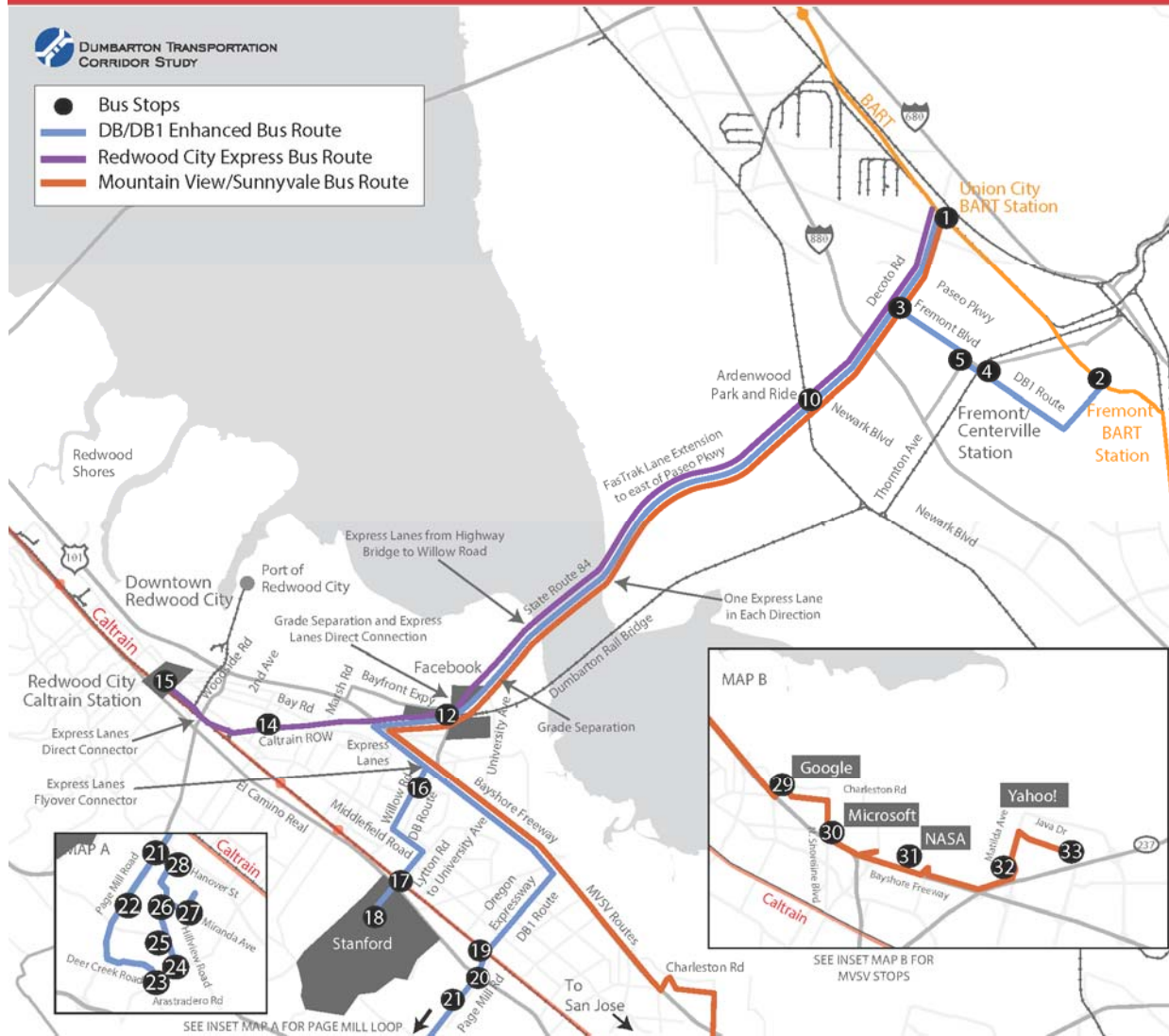
- **Expand Dumbarton Express bus including new routes to Menlo Park/Redwood City and Mountain View/Sunnyvale**
- **Approach improvements**
- **Impacts**
 - \$51m capital, \$12m O/M
 - 34% increase in transit
 - Involved entities: AC Transit, ACTC, MTC, Caltrans, cities, etc.
- **Not recommending bike/ped multi-use path due to rail right-of-way (ROW) limitations**

2025-2030: Bus and Approach Improvements on Highway Bridge

samTrans

DUMBARTON TRANSPORTATION CORRIDOR STUDY

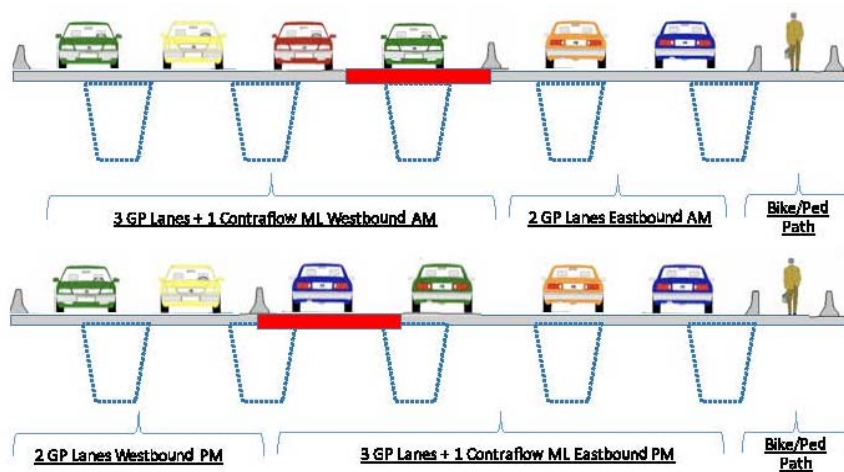
- Bus Stops
- DB/DB1 Enhanced Bus Route
- Redwood City Express Bus Route
- Mountain View/Sunnyvale Bus Route



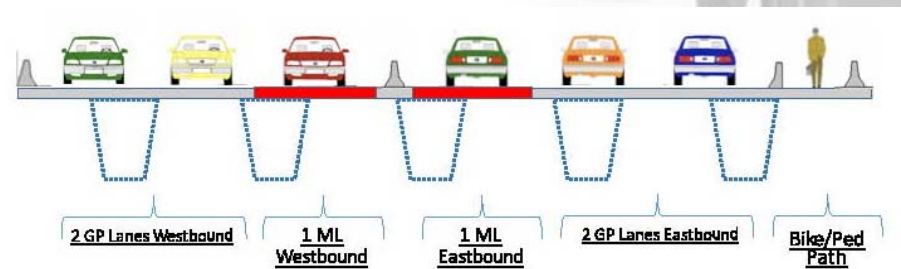
2025-2030: Express Lanes on Highway Bridge

samTrans

Reversible express lanes 4/2



One express lane per direction 3/3



2025-2030: Bus, Approach and Express Lanes (Recommended)

samTrans

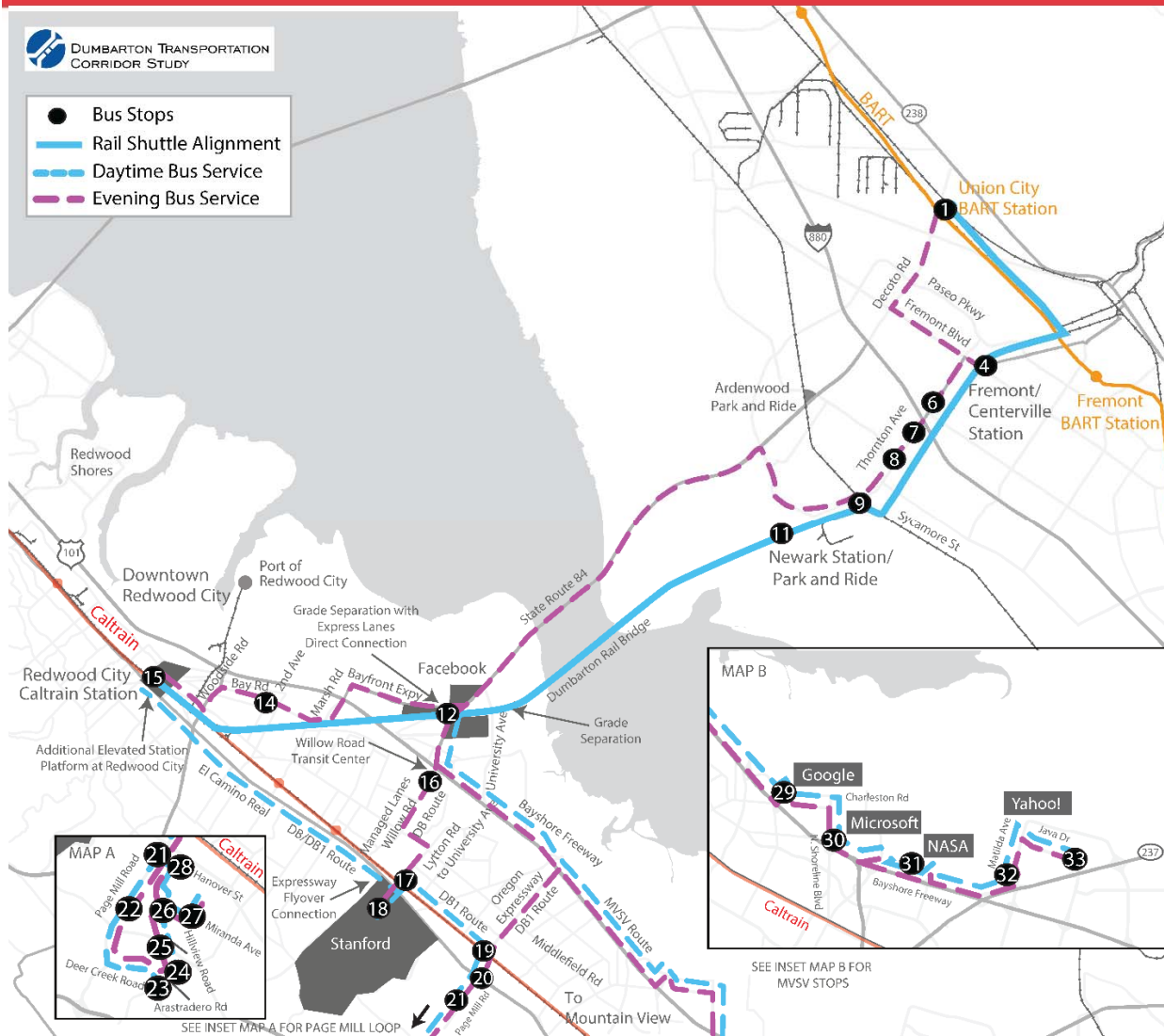
- **Mid-term (2025)**
 - Convert #1 lane to toll lane in each direction
 - More approach improvements east and west bay (flyovers, grade separations, etc.)
 - Connect rail ROW to US 101 via flyover
- **Long-term (2030)**
 - Further enhanced Dumbarton Express bus
- **Impact**
 - \$849m capital, \$20m O/M in mid-term
 - \$82m capital, \$14m O/M in long-term
 - ~21,300 daily transbay riders (147% increase)

2025-2030: Rail Shuttle on Rail Bridge



DUMBARTON TRANSPORTATION CORRIDOR STUDY

- Bus Stops
- Rail Shuttle Alignment
- Daytime Bus Service
- Evening Bus Service



2025-2030: Rail Shuttle on Rail Bridge (Recommended)

samTrans

- **Mid-term (2025)**
 - New double-tracked rail service from Redwood City (RWC) to Newark, not “interlined” at Caltrain
- **Long-term (2030)**
 - Further extend rail to Union City
- **Impact**
 - \$975m capital, \$23m O/M (for Rail Shuttle to Newark) in mid-term
 - Additional \$295m capital, \$32m O/M (to extend to Union City) in long-term
 - ~15,600 daily transbay riders (81% increase)

2025-2030: Busway on Rail Bridge

samTrans

- Also looked at operating an exclusive busway on Rail Bridge
- Mid- to long-term (2025-2030)
 - No dedicated lanes in East Bay
- Impact
 - \$615m capital, \$14m O/M
 - ~18,600 daily transbay riders (116% increase)
- Not recommended if express lanes are constructed on Highway Bridge

- **Improve the Highway Bridge and Approaches**
 - One express lane in each direction
 - More approach improvements east and west bay (flyovers, grade separations, etc.)
 - Buses use ROW to US-101 flyover
- **Rail service on the Rail Bridge**
 - Rail Shuttle to Newark (double-tracked bridge)
- **Impact**
 - \$1.8b capital, \$44m O/M
 - Involved entities: Caltrain, UP, ACTC, MTC, Caltrans, STB, cities, etc.

Recommendations 2030

samTrans

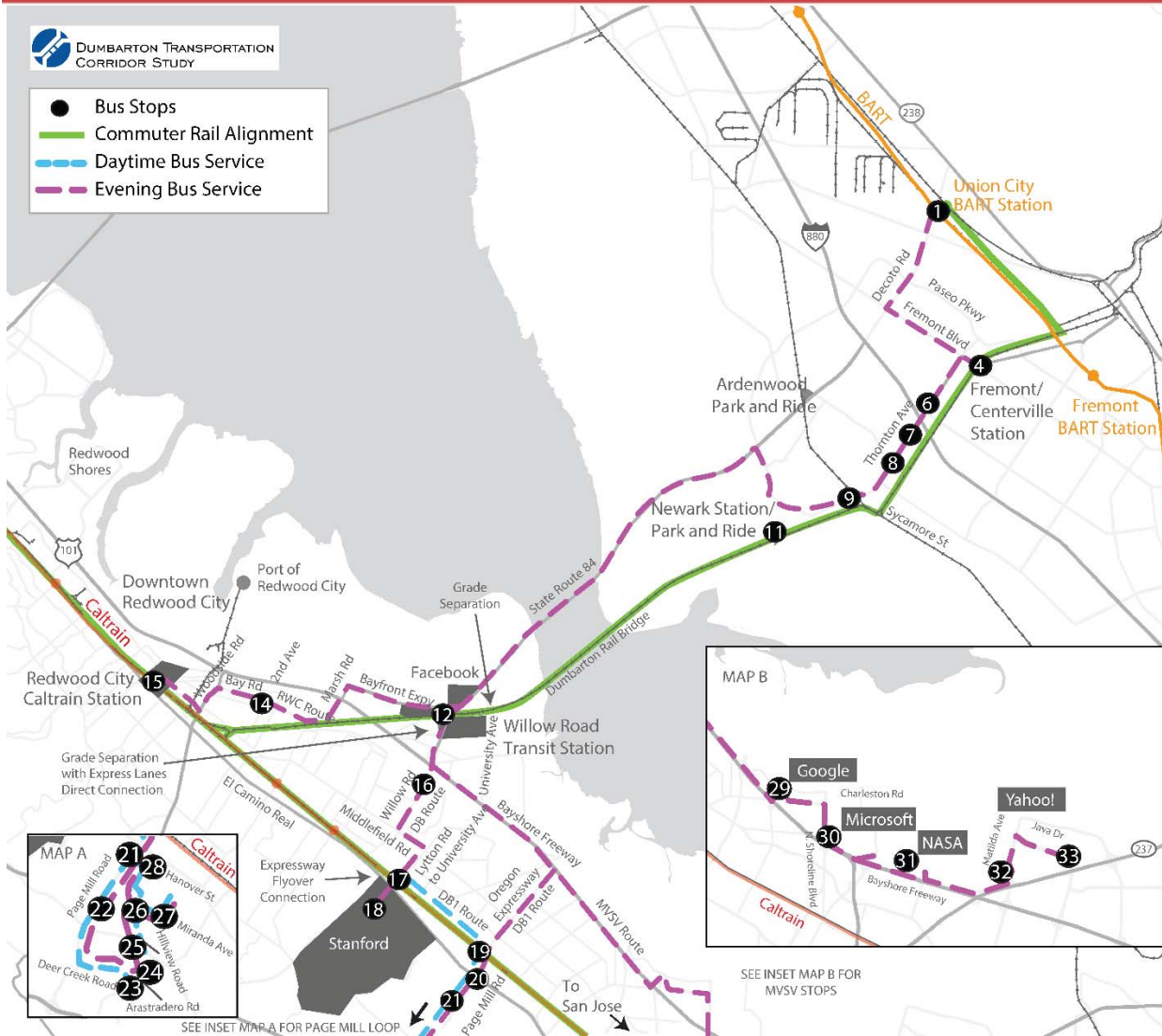
- **Further enhanced Dumbarton Express bus service**
- **Extended rail service**
 - Rail Shuttle from Newark to Union City
- **Impact**
 - \$377m capital (in addition to \$1.8b in 2025), \$46m O/M
 - Involved entities: Caltrain, UP, ACTC, MTC, Caltrans, STB, cities, etc.

2035: Rail Commuter on Rail Bridge, Double-Track

samTrans

DUMBARTON TRANSPORTATION CORRIDOR STUDY

- Bus Stops
- Commuter Rail Alignment
- Daytime Bus Service
- Evening Bus Service



2035: Rail Commuter on Rail Bridge, Double-Track (Recommended)

samTrans

- Longer-term (2035 or beyond)
 - Interline with Caltrain
 - Better connect to ACE, Capitol Corridor
- Impact
 - \$327m additional capital, \$38m O/M
 - ~23,300 daily transbay riders (270% increase) paired with express lanes on Highway Bridge
 - Involved entities: AC Transit, Caltrain, UP, ACE, Capitol Corridor, MTC, etc.



Funding Challenges & Opportunities

samTrans

- Use existing local funding: Measure A (San Mateo County), BB (Alameda County)
- Seek state, regional funding: SB1, RM3, etc.
- Solicit private contributions
- Pursue federal, state grants and financing
- Explore value capture
- Identify project elements attractive for P3
- Consider other alternative packages or phasing based on available funding
- Partnerships: ACE, State, Caltrans, etc.

Next Steps

samTrans

- **August-September:**
 - Board briefings
 - Stakeholder and public outreach
- **October-December:**
 - Review and respond to comments
 - Incorporate changes to final recommendations, if appropriate
 - SamTrans (owner of study report) Board consideration

Comments/Questions