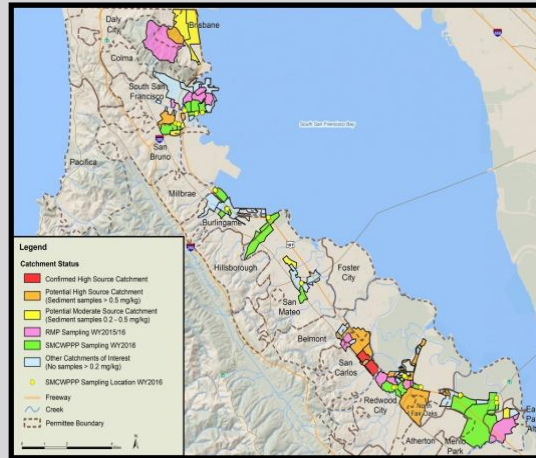


PCBs and Mercury Load Reductions in San Mateo County



Jon Konnan - EOA, Inc.

C/CAG Stormwater Committee

October 18, 2018

MRP Required Load Reductions for Stormwater

All MRP Permittees combined:

PCBs (g/year)			Mercury (g/yr)
By June 2018	By June 2020		By June 2020
All Control Measures	All Control Measures	Green Stormwater Infrastructure	Green Stormwater Infrastructure
500	3,000	120	48

SM County Permittees only combined:

PCBs (g/year)			Mercury (g/yr)
By June 2018	By June 2020		By June 2020
All Control Measures	All Control Measures	Green Stormwater Infrastructure	Green Stormwater Infrastructure
60	370	15	6

PCBs Controls for Stormwater

- Most prevalent so far:
 1. Source property identification (referral or “self-abatement”)
 2. Green stormwater infrastructure
 3. Management of PCBs in building materials during demolition



Source Property Referrals in SM County

Description	Acreage ¹	PCBs Load Reduction Credit ² (g/year)
Delta Star / Tiegel	7.7	15.5
977 and 1007/1011 Bransten Road	2.4	4.8
1411 Industrial Rd. (Habitat for Humanity site)	1.3	2.6
1029A Washington Street (Phoebus Manufacturing)	0.5	0.9
1030 Washington Street (Nor Cal and cell tower)	0.3	0.6
1025 or 1030 Varian Street (empty lot)	0.1	0.3
Total	12.3	24.7

¹ Site acreages are approximate.

² Enhanced O&M in vicinity of site required for referrals.

PCBs Load Reductions – San Mateo County

Control Measure Category		PCBs Loads Reduced (g/year)									
		Reported To-date					Projected over Remainder of Permit Term ¹	Cumulative Load Reduced through June 2018	Required Load Reduction by June 2018 ²	Cumulative Load Reduced through June 2020	Required Load Reduction by June 2020 ²
		FY 13/14	FY 14/15	FY 15/16	FY 16/17	FY 17/18					
Source Property Identification and Abatement		0	0	0	0	20.4		20.4		20.4	
Green Infrastructure and Treatment Controls	Parcel-Based New or Redevelopment	12.3	4.1	4.7	2.8	11.0	16.3	34.9		51.2	15
	Green Streets or Regional Retrofit	0.1	0.08	0.02	0	0.02	0.3	0.2		0.6	
	Trash Full-Capture	0	0	0	0	0		0.0		0	
Enhanced O&M Measures		0	0	0	0	0		0.0		0	
Manage PCBs in Building Materials		0	0	0	0	0	246.7	0.0		246.7	
Manage PCBs in Infrastructure		0	0	0	0	0		0.0		0	
Diversion to POTW		0	0	0	0	0		0.0		0	
Other		0	0	0	0	0		0.0		0	
TOTAL - ALL CONTROLS		12.4	4.2	4.7	2.8	31.4	263.3	55.5	60	318.8	370

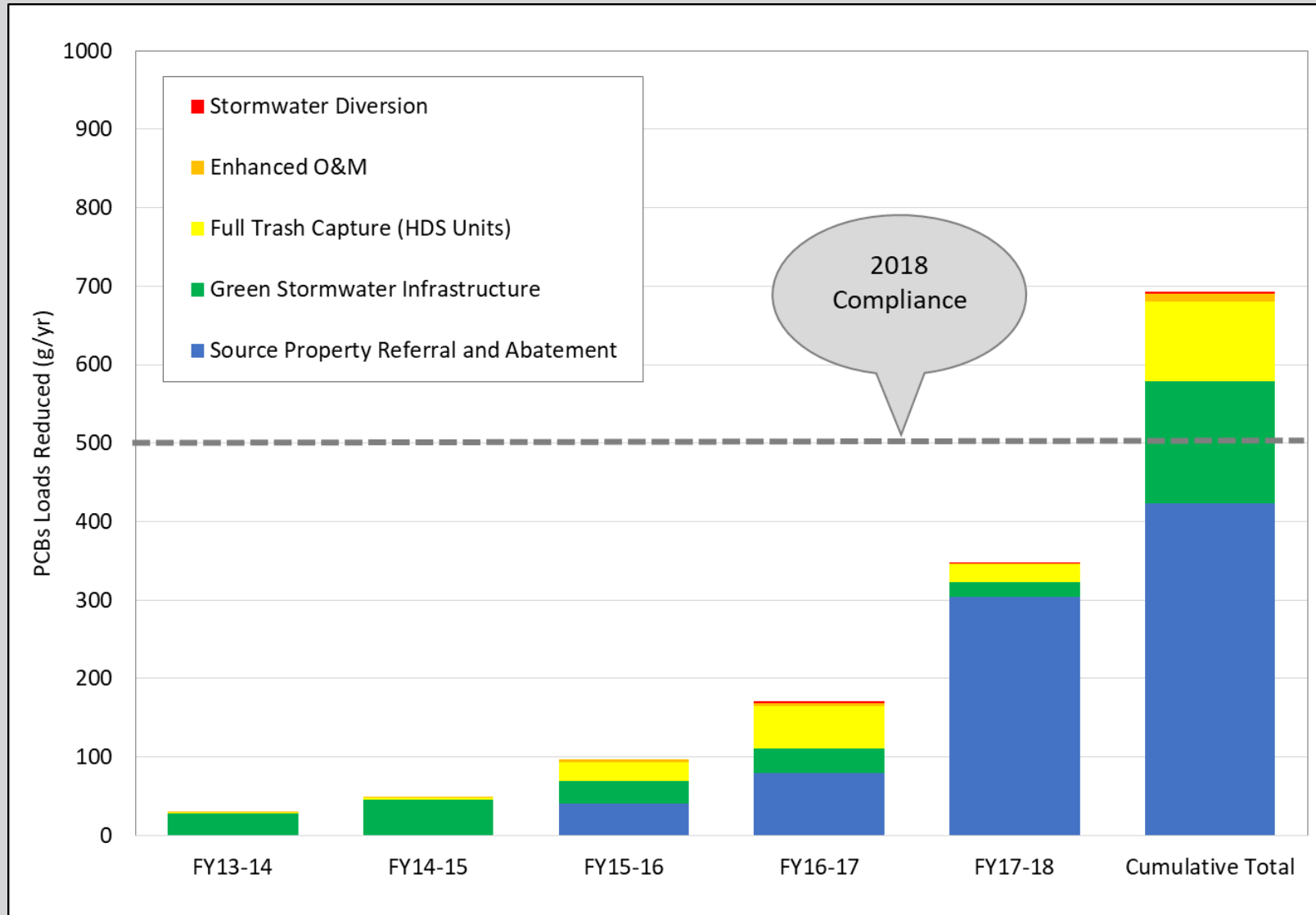
¹ Assumes green infrastructure currently designated "planned or under construction" will be constructed by end of permit term.

² Required load reduction may alternatively be met regionally.

PCBs Load Reductions by June 2018 – Reported Regionally

Control Measure Category	PCBs Load Reduction (g/yr)
Source Property Identification and Abatement	424
Green Stormwater Infrastructure	156
Large Full Trash Capture (i.e., HDS Units)	100
Enhanced O&M Measures	9
Stormwater Diversion to Sanitary Sewer	2
TOTAL - All Control Measures	691

PCBs Load Reductions by June 2018 – Reported Regionally



Next Steps

- Continue evaluating remaining potential source property referrals in San Carlos
- Continue trying to identify “catchments of interest” and new source properties: 25 sediment samples
- Continue tracking private & public GI and associated load reductions (integrate with new Caltrans grant)
- Assist Permittees to use BASMAA tools to develop programs to manage PCBs during demo (2,000 g/yr credit regionally)

Next Steps (cont.)

- Continue evaluating other opportunities for PCBs loads reductions (e.g., “self abatements”, enhanced municipal O&M activities)
- Evaluate scenarios for load reduction and develop implementation plans. RWB staff has discussed two approaches to MRP 3:
 1. Develop implementation plans and commitments by time of permit reissuance and implement in MRP 3.0; or
 2. MRP 3 will include more mandated PCBs load reductions



QUESTIONS?