

# C/CAG

## CITY/COUNTY ASSOCIATION OF GOVERNMENTS OF SAN MATEO COUNTY

*Atherton • Belmont • Brisbane • Burlingame • Colma • Daly City • East Palo Alto • Foster City • Half Moon Bay • Hillsborough • Menlo Park  
Millbrae • Pacifica • Portola Valley • Redwood City • San Bruno • San Carlos • San Mateo • San Mateo County • South San Francisco • Woodside*

### Agenda

#### Resource Management and Climate Protection Committee (RMCP)

**Date:** Wednesday, May 21, 2014

**Time:** 2:00 to 4:00 p.m.

**Location:** 155 Bovet Rd. - Ground Floor Conference Room  
San Mateo, CA

1. Introductions
2. Public Comment
3. Approval of Minutes from March 19, 2014  
(Susan Wright) Action
4. Presentation on IPCC Report on Global Climate Change  
(Bob Cormia - Foothill – De Anza) Information, Discussion
5. Presentation on Future Public Utility Business Model, October 8, 2013 En Banc Meeting at  
California Public Utilities Commission  
(Bob Cormia - Foothill – De Anza) Information, Discussion
6. Presentation on Department of Energy-funded Solar Roadmap Program  
Kim Springer, Eileen Hays – Optony Information, Discussion
7. Update on Current Water Supply and Drought Conditions  
(Adrienne Carr, BAWSCA) Information, Discussion
8. Update and Review of draft 2013 RMCP Committee Progress Report  
(Kim Springer) Discussion
9. Committee Member Updates
10. Next Regular Meeting Date: June 18, 2014

PUBLIC NOTICING: All notices of C/CAG Board and Committee meetings are posted at:  
San Mateo County Transit District Office, 1250 San Carlos Ave., San Carlos, CA.

**C/CAG**  
**CITY/COUNTY ASSOCIATION OF GOVERNMENTS**  
**OF SAN MATEO COUNTY**

*Atherton • Belmont • Brisbane • Burlingame • Colma • Daly City • East Palo Alto • Foster City • Half Moon Bay • Hillsborough • Menlo Park  
Millbrae • Pacifica • Portola Valley • Redwood City • San Bruno • San Carlos • San Mateo • San Mateo County • South San Francisco • Woodside*

**RESOURCE MANAGEMENT AND CLIMATE PROTECTION TASK FORCE**  
**Minutes from the 3-19-2014 Meeting**

**In attendance:**

Michael Barber, Supervisor Pine's office  
Adrienne Carr, BAWSCA  
Bob Cormia, Foothill De Anza Community College  
Rick DeGolia, Town of Atherton\*  
Beth Bhatnagar, Sustainable San Mateo County  
Brandi de Garreaux, Town of Portola Valley  
Pradeep Gupta, South San Francisco City Council\*  
Debbie Kranefuss, Ecology Action  
Erica Kudyba, Climate Corps Bay Area fellow for San Mateo County Energy Watch  
Susan McCue, City of South San Francisco  
Maryann Moise Derwin, Committee Vice Chair, Portola Valley Town Council\*  
Alex Palantzas, San Mateo County Hispanic Chamber of Commerce  
Barbara Pierce, Redwood City Council\*  
Dave Pine, San Mateo County Board of Supervisors (by phone)\*  
Kim Springer, County of San Mateo RecycleWorks (staff)  
Gauri Vilash, Student at Foothill College  
Sandy Wong, C/CAG  
Susan Wright, County of San Mateo RecycleWorks (staff)

**Not in attendance:**

Sapna Dixit, PG&E  
Don Horsley, San Mateo County Board of Supervisors (not expected due to new appointment)\*  
Deborah Gordon, Committee Chair, Woodside Town Council\*  
Jorge Jaramillo, San Mateo County Hispanic Chamber of Commerce  
Kathy Lavezzo, PG&E  
Nicole Sandkulla, BAWSCA  
Eric Sevim, A+ Japanese Auto Repair  
\*=elected official member

**1) Introductions**

Attendees introduced themselves and their organizations.

**2) Public Comment**

There was no public comment.

**3) Approval of Minutes**

The minutes from the February 19, 2014 meeting were approved with one addition: On page 4, it should reference the 9-county Bay Area.

**PUBLIC NOTICING:** All notices of C/CAG Board and Committee meetings are posted at:  
San Mateo County Transit District Office, 1250 San Carlos Ave., San Carlos, CA.

#### **4) Review of Proposed RMCP Committee Progress Report (Kim Springer)**

Kim Springer presented a draft for the progress report, which included color coded icons to indicate status. The committee made the following comments/suggestions:

- Add factual data pieces, such as total housing stock and total energy base case.
- Include key indicators – show the trend.
- County-level data could be helpful for policy makers, goal setting.
- The progress report could go to city managers twice a year to report to councils.
- There should be a link to adopted climate action plans on the SMC Energy Watch website.

Sandy Wong said that the committee can report back to the C/CAG Board when it's ready.

#### **5) Presentation on Current Water Supply Conditions and Drought Messaging (Adrienne Carr, BAWSCA)**

- San Mateo County has a 10% voluntary cutback. Reservoirs are 60% full instead of the usual 70-75% full at this time of year.
- The committee was interested in hearing more about gray water reuse and recycled water projects.
- Redwood City will have extra recycled water to sell. South San Francisco has a pipeline for recycled water.
- Education campaigns were discussed. Check water use compared to last year, compared to neighbors.
- PG&E has a website to show energy use, but water agencies don't do that. It's difficult to find that information on water bills. BAWSCA could put something in place that would be more effective.
- It would be helpful for cities to work with water agencies. Portola Valley has a new water task force.
- Could we combine water use data from all agencies to get a complete picture of water use county-wide?

#### **6) Update on the San Mateo County Energy Watch Program – continued from February 2014 meeting (Susan Wright)**

Susan Wright explained the countywide campaigns that are being developed to target specific commercial sectors: restaurants and offices/real estate. The committee made the following comments:

- Restaurant kitchens could be conserving more but don't. The message needs to be how it can profit you.
- This would be a good presentation for the Council of Cities meeting. Show the Colma example and level of success.
- The economic benefit is a good campaign message.
- Get some guinea pig restaurants to go through the program.
- The Food Service Technology Center partners with PG&E to help restaurants with energy and water efficiency.
- Restaurants that participate in the program could display a sticker: "I watch."

PUBLIC NOTICING: All notices of C/CAG Board and Committee meetings are posted at: San Mateo County Transit District Office, 1250 San Carlos Ave., San Carlos, CA.

**7) Discussion about an Approach to Local Sea Level Rise Challenges in San Mateo County**  
**(Dave Pine, Michael Barber)**

Michael Barber explained that with 1 foot of sea level rise, everything east of 101 would be under water. Sea level rise plus storm events adds another foot. That jeopardizes the whole bayside. Dave Pine is working collaboratively with SFO, Colma Creek, San Bruno Creek. Sea level rise is a slow-moving emergency.

Barbara Pierce recalled how the San Mateo County Energy Strategy evolved: Jerry Hill came to CMEQ and asked for a group to look at energy. Jerry got funding from the County to get a consultant.

Kim Springer pointed out that the challenge of sea level rise is that stakeholders are broad. Planners, OES, elected officials, County Health, environmental health, County fire, nonprofits, utilities, etc.

Pradeep Gupta said that it requires an initial steering committee that is more focused. First question: science. What are the numbers, how urgent is it? Second question: Policy. How will it impinge on other actions we're planning. How will other groups get involved with setting standards? There will be a lot of real estate, commerce involved. Third question: Cities will need to implement policies. How can you force compliance? Need to figure out the value of land.

Bob Cormia pointed out that other countries have been thinking about this for 25 years. Invite them in as thought leaders.

Barbara: There may be an interest in sub groups: Bayside people vs. coastside people, those concerned about high fire danger. Need to address planning issues and potential education and awareness issues. People won't be inclined to divert any revenues unless they feel there's some danger. Education is important.

Kim: Planning and implementation can run parallel. Decisions are being made now about structure that will be around for 50 years. Things can be done now to be preventative. Two type of assets: resilient vs. at risk.

Dave Pine: Caltrans is thinking about sea level rise. They're not planning to abandon 101. It would be interesting to hear from city managers about how they're thinking about sea level rise. The Working Group would be a forum for communication for those planning for the future. Could meet quarterly, ask Caltrans to present to a meeting. Modest benefit would be information sharing. Include the 10 communities on the bayside. First goal: Education, staying current. Second: Champion a project. Come up with the resources for a more in-depth analysis of impact along the bayshore. Could adapt the ART progress like in Alameda County. The business community has a lot at stake here. They need to contribute to any effort. At some point we'll be talking about levees and dikes.

Michael: Facebook has put money into the creek JPA. They're surrounded on 3 sided by wetlands.

Kim: City Public Works departments would be involved, but a lot of this is tied to Planning. Early actions would be requirements for new construction. Could present to 21 Element planning group

**PUBLIC NOTICING:** All notices of C/CAG Board and Committee meetings are posted at: San Mateo County Transit District Office, 1250 San Carlos Ave., San Carlos, CA.

Dave Pine will develop a proposed framework (“straw man”) for how this group could function. Will bring it back to the committee to comment on.

**8) Presentation on Governor’s Office of Planning and Research Environmental Goals and Policy Report Update (Kim Springer)**

Kim Springer reported on “California @ 50 Million, which was presented at a stakeholder meeting hosted by the Joint Policy Committee. Everyone is encouraged to read it and send in comments.

[http://www.opr.ca.gov/s\\_egpr.php](http://www.opr.ca.gov/s_egpr.php)

The report doesn’t specifically link with the One Bay Area Plan.

Bob Cormia said that energy intensity should be in the report: intensity per person and intensity per economic dollar.

**9) Committee Member Updates**

None.

**10) Next Regular Meeting Date – May 20 @ 2pm at BAWSCA, 155 Bovet Road, Suite 650, San Mateo**

Possible topics to cover:

- Sea level rise –task force “straw man”
- Water supply update
- Community outreach campaigns
- Program progress report process – Energy programs
- Community inventory report – countywide plus individual cities
- EV charging stations
- Group solar campaign

**Attachments:**

None.

PUBLIC NOTICING: All notices of C/CAG Board and Committee meetings are posted at: San Mateo County Transit District Office, 1250 San Carlos Ave., San Carlos, CA.

# C/CAG AGENDA REPORT

**Date:** May 21, 2014  
**To:** Resource Management and Climate Protection Committee  
**From:** Kim Springer, County Staff to C/CAG  
**Subject:** Presentation on IPCC Report on Global Climate Change  
(For further information contact Kim Springer at 650-599-1412)

---

## **RECOMMENDATION**

Receive a presentation on IPCC Report on Global Climate Change.

## **FISCAL IMPACT**

\$50,000 annually for staffing of the RMCP Committee.

## **SOURCE OF FUNDS**

Staffing of the RMCP Committee is contracted to the County of San Mateo, Department of Public Works and comes from Congestion Relief funds.

## **BACKGROUND/DISCUSSION**

The Intergovernmental Panel on Climate Change is the international body for assessing the science related to climate change. The IPCC was set up in 1988 by the World Meteorological Organization (WMO) and United Nations Environment Program (UNEP) to provide policymakers with regular assessments of the scientific basis of climate change, its impacts and future risks, and options for adaptation and mitigation.

The IPCC recently released its 5<sup>th</sup> Assessment Report on global climate change, which shows some alarming news related to the impacts of global warming. A link to the report is provided as an attachment to this staff report.

Committee member, Bob Cormia, will give a short presentation on the findings of the report.

## **ATTACHMENTS**

<https://www.ipcc.ch/report/ar5/wg1/>

# C/CAG AGENDA REPORT

**Date:** May 21, 2014  
**To:** Resource Management and Climate Protection Committee  
**From:** Kim Springer, County Staff to C/CAG  
**Subject:** Presentation on Future Public Utility Business Model, October 8, 2013 En Banc Meeting at California Public Utilities Commission  
(For further information contact Kim Springer at 650-599-1412)

---

## **RECOMMENDATION**

Receive an presentation on future public utility business models, based on an October 8, 2013 En Banc meeting at California Public Utilities Commission (CPUC).

## **FISCAL IMPACT**

\$50,000 annually for staffing of the RMCP Committee.

## **SOURCE OF FUNDS**

Staffing of the RMCP Committee is contracted to the County of San Mateo, Department of Public Works and comes from Congestion Relief funds.

## **BACKGROUND/DISCUSSION**

On October 8, 2013, the CPUC held an educational discussion regarding the nature of the impact of new technologies and services on the traditional electric utility model. A link to the video archive is provided below as an attachment to this staff report.

The discussion was panel who shared their views of how the traditional utility business model is challenged by grid modernization and technological and service innovations, and shared what they believe some of the potential options are for addressing the challenges.

The following took part in the discussion:

- CPUC Commissioners
- California Energy Commission Chair
- California Independent System Operator President
- Joseph Scalise, Partner, Bain & Company
- Greg Guthridge, Global Managing Director, Accenture Energy Consumer Services
- Matthew Rogers, Director, McKinsey & Co.
- Investor-owned utility CEOs

Committee member, Bob Cormia, will make a short presentation on some of the items discussed at the CPUC meeting.

## **ATTACHMENTS**

<http://www.californiaadmin.com/cpuc.shtml> (scroll to October 8, 2013)

# C/CAG AGENDA REPORT

**Date:** May 21, 2014  
**To:** Resource Management and Climate Protection Committee  
**From:** Kim Springer, County Staff to C/CAG  
**Subject:** Presentation on Department of Energy-funded Solar Roadmap Program  
(For further information contact Kim Springer at 650-599-1412)

---

## **RECOMMENDATION**

Receive a presentation on Department of Energy-funded Solar Roadmap Program.

## **FISCAL IMPACT**

\$50,000 annually for staffing of the RMCP Committee.

## **SOURCE OF FUNDS**

Staffing of the RMCP Committee is contracted to the County of San Mateo, Department of Public Works and comes from Congestion Relief funds.

## **BACKGROUND/DISCUSSION**

The US Department of Energy has provided funding to a nationwide team of public and private partners committed to advancing the adoption of solar power. The program, called “The American Solar Transformation Initiative (ASTI) seeks to have municipal and private partners join the program in regions of the country. The focus of this program is to drive solar market maturity via significant improvements in 6 key focus areas: permit and inspection, planning and zoning, utility interconnection, market education, innovative deployment programs, and financing tools and options.

The “hub” of the program is a no-cost set of online tools for consumers, contractors and municipalities.

Eileen Hays, Project Manager at Optony will give a presentation on the project and explain how San Mateo County can participate.

## **ATTACHMENTS**

None



# C/CAG AGENDA REPORT

**Date:** May 21, 2014  
**To:** Resource Management and Climate Protection Committee  
**From:** Kim Springer, County Staff to C/CAG  
**Subject:** Update on Current Water Supply Conditions and Drought Conditions

(For further information contact Kim Springer at 650-599-1412)

---

## **RECOMMENDATION**

Receive an update on current water supply and drought conditions in San Mateo County.

## **FISCAL IMPACT**

None

## **SOURCE OF FUNDS**

Most all SMCEW program staff costs and expenses are paid for by funding under the C/CAG – PG&E Local Government Partnership (LGP) agreement. Additional matching funds, specifically for transportation-related Climate Action Planning efforts, come from Congestion Relief Funds.

## **BACKGROUND/DISCUSSION**

With ongoing dry conditions throughout California, the San Francisco Public Utilities Commission (SFPUC) continues to request a 10% voluntary water use reduction from all customers of the Hetch Hetchy Regional Water System. The Bay Area Water Supply and Conservation Agency (BAWSCA), which represents the 26 wholesale customers of the Hetch Hetchy Regional Water System, is working with its member agencies to achieve the 10% reduction goal.

Adrienne Carr, Senior Water Resource Specialist with BAWSCA, gave a short update of conditions related to the current drought as a committee update at the February 2014 RMCP Committee meeting, and made a formal presentation at the March 19, 2014 meeting.

Adrienne Carr, will provide an update on the current water supply outlook and new consumer messaging on the drought at this meeting.

## **ATTACHMENTS**

None

# C/CAG AGENDA REPORT

**Date:** May 21, 2014  
**To:** Resource Management and Climate Protection Committee  
**From:** Kim Springer, County Staff to C/CAG  
**Subject:** Update and Review of draft 2013 RMCP Committee Progress Report  
(For further information contact Kim Springer at 650-599-1412)

---

## **RECOMMENDATION**

Review and provide feedback on draft 2013 RMCP Committee progress report.

## **FISCAL IMPACT**

\$50,000 annually for staffing of the RMCP Committee.

## **SOURCE OF FUNDS**

Staffing of the RMCP Committee is contracted to the County of San Mateo, Department of Public Works and comes from Congestion Relief funds.

## **BACKGROUND/DISCUSSION**

At the February 19, 2014 RMCP Committee meeting, committee member Pradeep Gupta requested that some sort of progress reporting structure be established for the RMCP Committee work. It was suggested that it should provide an overview of projects overseen by the RMCP Committee, a historical record of work completed with progress to date, next steps and goals. The report should also serve as a source of material for new committee members to understand the scope of work by the committee.

Based on committee members request, staff developed a template for the progress report, which was reviewed at the March 19, 2013 meeting. Committee members and staff agreed that the report could serve as an update to the San Mateo County Energy Strategy, with just a few expansions in content, which would also provide a larger perspective on countywide progress towards the resource conservation and climate action goals committed to by cities in the county, either through their own climate action plans or their adoption of the SMC Energy Strategy in 2009.

Staff has completed the energy section of the progress report, which is provided as an attachment to this staff report.

Staff may have completed the section of the progress report (on water) in time to hand out at the meeting, for additional review.

## **ATTACHMENTS**

Draft 2013 RMCP Progress Report

# City and County Association of Governments Resource Management & Climate Protection Committee 2013 Progress Review

---

## Committee History

The Resource Management and Climate Protection Committee (RMCP) is composed of elected officials, representatives from energy and water utilities, business and nonprofits. Originally an Ad Hoc committee and now the RMCP Committee, the Utilities Sustainability Task Force (USTF), developed a San Mateo County Energy Strategy (Energy Strategy) for the county, which was subsequently adopted by the County and every city in San Mateo County by the end of 2009. The Energy Strategy can be found at: [SMC Energy Strategy](#)

The USTF, recognizing this support by all the cities, began efforts to implement the goals set forth in the Energy Strategy, which include:

- Energy: a 25% reduction of energy use from 2005 levels by making energy efficiency common practice, and
- Water: implementation of cost-effective and feasible water conservation and recycling programs and development of other local water supplies to meet SFPUC-projected supply demands for San Mateo County; an additional 14 gallons per capita per day in either supply or conservation, and
- Collaboration: partner with the public utilities and work across city boundaries to address environmental challenges more effectively and efficiently, and
- Economic Opportunity: support the clean technology sector to strengthen the long-term economic health of San Mateo County, and
- Leadership from the Top: encourage environmental leadership from the top in the San Mateo County public sector, the business community and with its residents to achieve the goals of the Energy Strategy.

With these goals established, and with appreciation of the value and contributions of the committee members, the C/CAG Board established the Resource Management and Climate Protection (RMCP) Committee to oversee implementation.

## Key Committee Responsibilities

The RMCP Committee provides information and recommendations to CMEQ and the C/CAG Board on items related to resource conservation and climate action. The RMCP Committee has two main programs for which staff regularly track and report progress. These are:

- The San Mateo County Energy Watch (SMCEW) program, which began in December 2008, focuses on providing energy efficiency implementation resources, mainly to local governments in San Mateo County for their government operations. The program also includes resources for nonprofits and specific commercial and residential sectors. The SMCEW website can be found at: <http://www.smcenergywatch.com/>.
- The Regionally Integrated Climate Action Planning Suite (RICAPS) project was launched in 2008 with co-funding from the Bay Area Air Quality Management District, through their Climate Protection Grant program, and C/CAG. Additional funding has been made available from PG&E in the SMCEW program budget with additional funding, again, from C/CAG.

The RICPAS project is a suite of tools to significantly reduce the cost to cities for developing climate action plans, by creating a:

- Climate action plan document template,
- “Menu” of emission reduction measures – each with a measure worksheet that includes calculations, coefficients and a cost-benefit analysis,
- a cloud-based software tool for tracking resource use and associated emissions,
- technical assistance to cities to help them along the process,
- and a user’s manual to help cities use the RICAPS tools.

The project includes coordination of a City Working Group, which meets monthly to: receive presentations from state and local government stakeholders, collaborate on countywide emission reduction initiatives, and support cities still working on completing climate action plans and updating GHG emission inventories.

## Progress Report

The following main topic areas represent the work of the RMCP Committee and include key activities, which are rated as to progress by the following colored icons:

- Not yet started ●
- Underway but “stalled” ●
- Underway ●
- Completed. ●

## Energy and Energy Strategy Goal:

1. Reduce energy use from the grid by 25% from 2005 levels through energy efficiency and expansion of renewable energy resources.

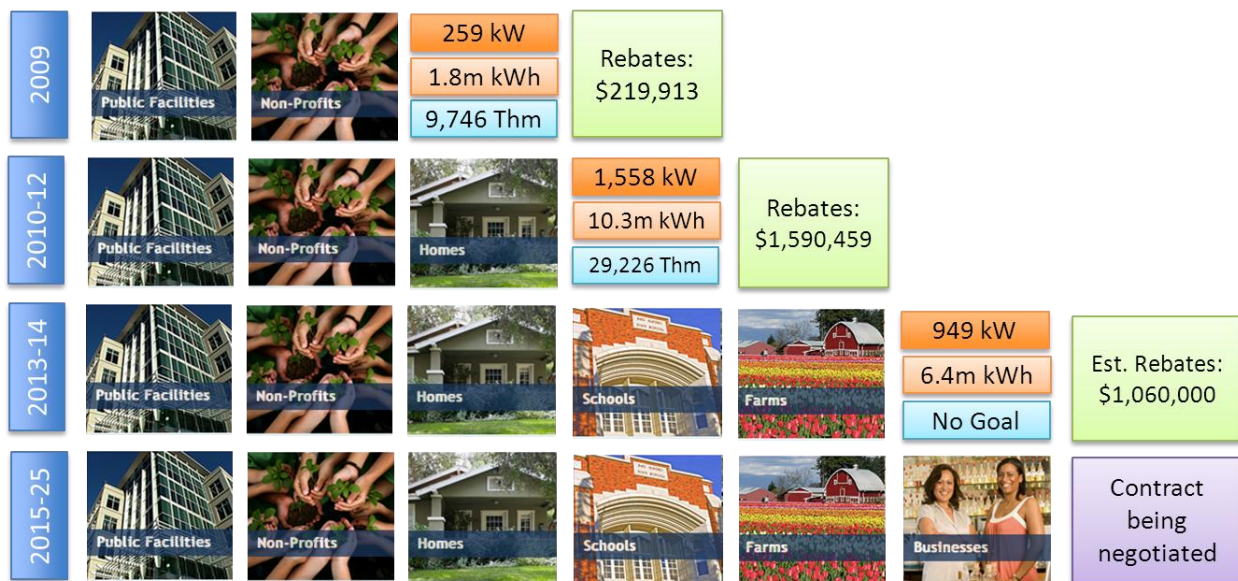
## Initiative - San Mateo County Energy Watch (SMCEW) : ●

### Past Achievements:

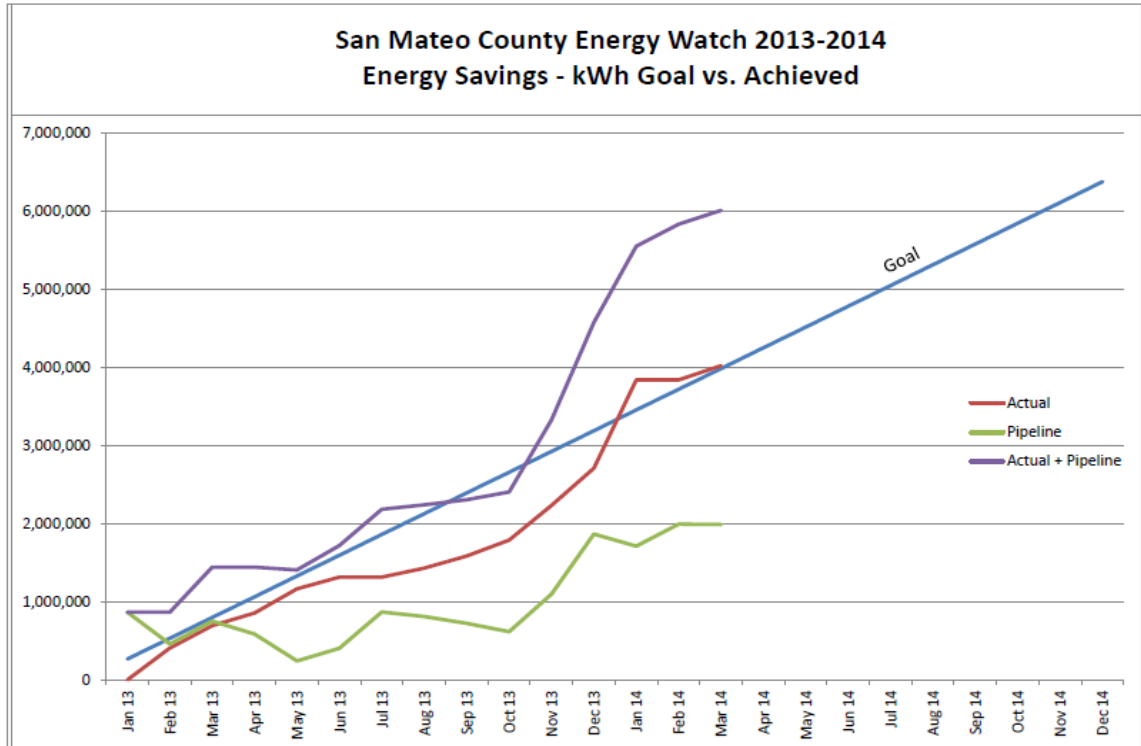
- C/CAG launched the SMCEW Local Government Partnership (LGP) with PG&E in December 2008
- Completed 2009-2011 SMCEW contracting with PG&E (2009 became a "bridge year" to a new program cycle 2010-2012. Saving Goals were achieved for 2009.
- Completed 2010-2012 contracting with PG&E and exceeded kWh and peak kW goals. Natural gas goal was not met but disregarded as PG&E met its overall portfolio goal early in 2012.
- Completed contracting for 2013-2014 and program is on target to meet energy-savings goals.
- Expanded sectors served, adding farms and schools.

### Program Outcomes:

The following graphic represents the program cycles mentioned above, the progress to date energy savings and ratepayer-funded rebate incentives paid to PG&E customers served by the SMCEW:

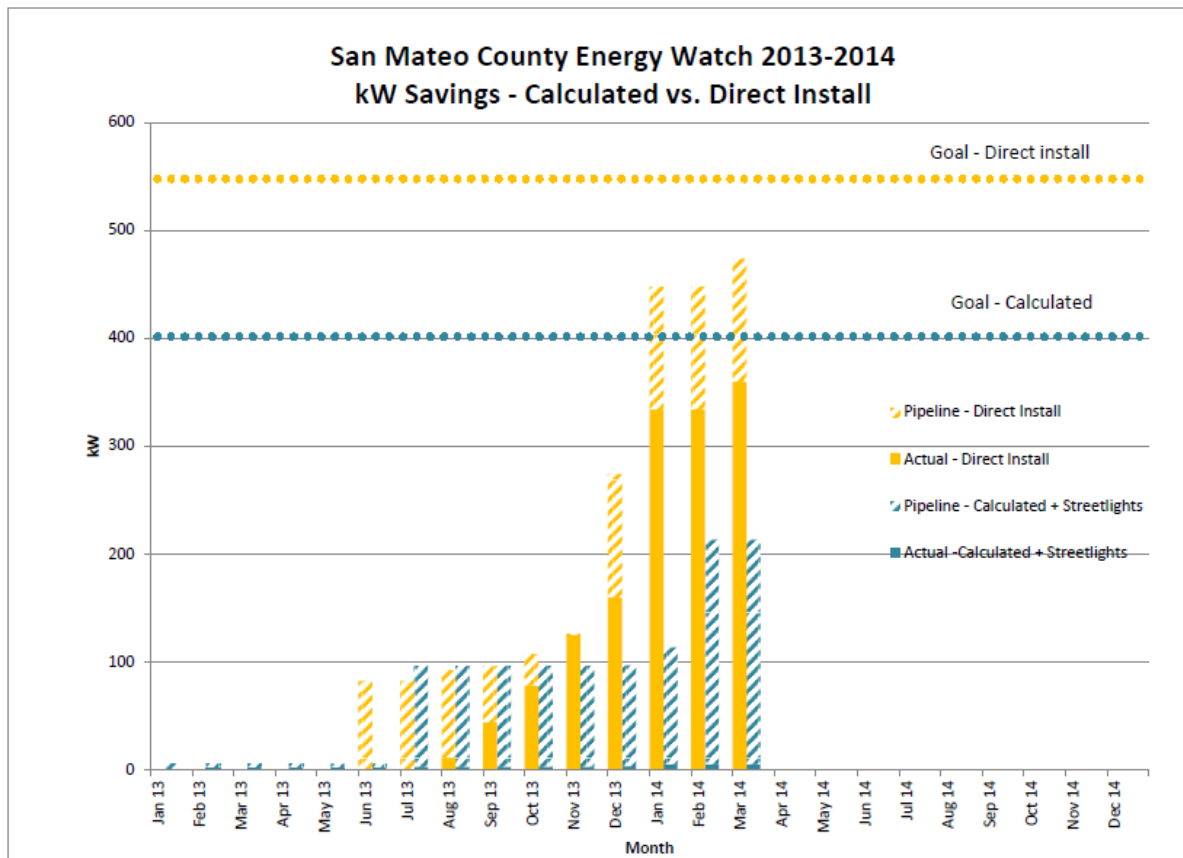


The following charts show progress towards completion of the 2013-2014 program cycle goal of 6.4 M kWh.



The SMCEW program savings are generated by two different types of programs, Direct Install, which is a customer-friendly “turnkey” offering run by Ecology Action with support from SMCEW staff, and Calculated, which includes larger (mainly HVAC) and LED street lighting projects. The following chart shows progress of these types of programs that, together, generate the savings for the SMCEW program, which represents about 8% of the total energy savings of all PG&E programs in San Mateo County.

The yellow lines in the following chart represent the Direct Install program and the blue represents the Calculated portion of the program.



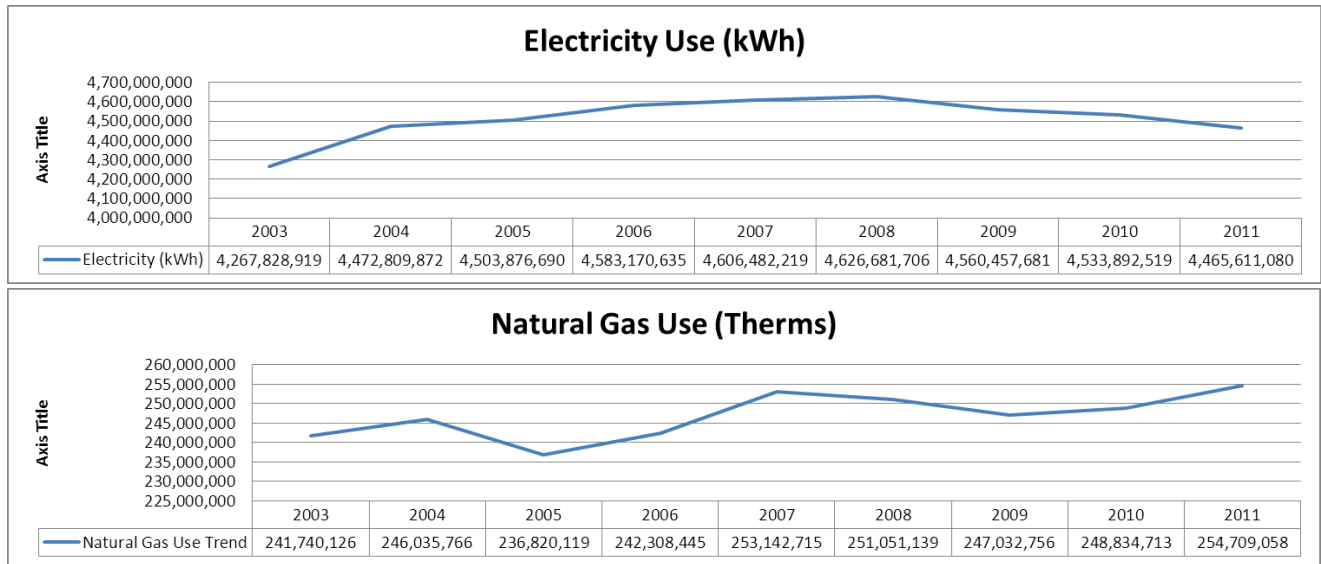
***SMCEW Next Steps and/or Goals:***

- Continue driving comprehensive packages of energy efficiency projects to achieve deep energy savings for public agencies, farms, schools, nonprofits and commercial customers.
- Continue looking for opportunities that add value in the form of greater energy savings, greater customer satisfaction, better financing options, or reduced cost to the customer.
- Surpass CY 2013-2014 energy savings goal in order to (potentially) receive additional funding from PG&E for additional staff and energy savings in the last half of 2014 and beyond.
- Contract the 2015 program cycle with PG&E, adding funding to the existing 1.2 FTE for additional program staff.

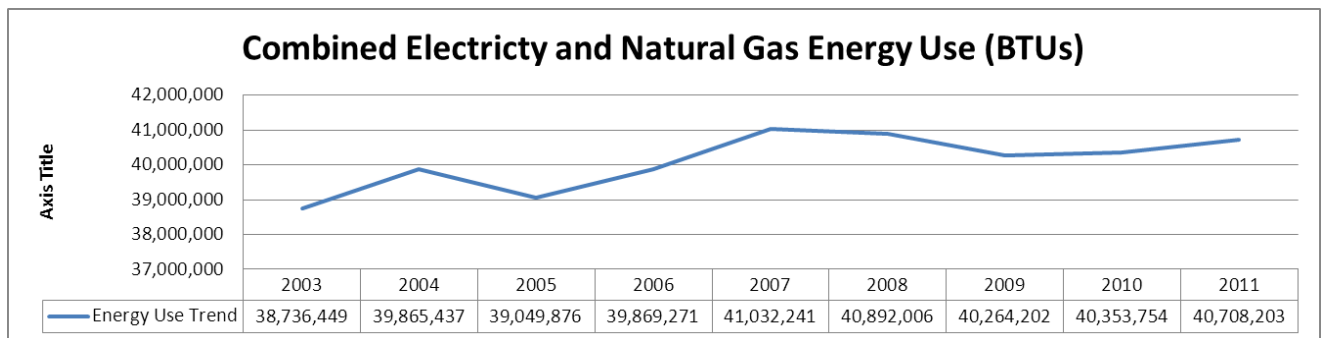
- Create and implement countywide energy efficiency campaigns to the small and medium commercial sector, leveraging city staff and elected official participation.

### Energy - Measured Progress

The following two charts show the trend in use of electricity and natural gas in San Mateo County from 2003 through 2011. The trends show a .85% decrease in electricity use, and a 7.55% increase in natural gas use from 2005 to 2011 in San Mateo County.



The following chart converts electricity and natural gas to energy, represented in millions of BTUs and shows the trend in “energy” use in San Mateo County, which is a 4.2% increase from 2005 to 2011.



### Energy Conclusion:

San Mateo County needs to continue to promote residential and commercial energy efficiency and sources of renewable energy to residents and (especially) businesses countywide, through campaigns and targets outreach.



