

## MRP 1.0 → MRP 2.0, 3.0, 4.0...

- Vision is long-term (multi-decadal) disconnection of impervious surfaces in urbanized areas using green infrastructure



## Big Questions

- How much through new/redevelopment?
- What about streets and other land uses?
- What will it do for water quality?
- What will it do for other issues?
- How long will it take?
- How much will it cost?
- How will we pay for it?



## San Mateo Countywide Funding Need

- Estimated countywide PCB costs: **\$23M/year**
- Estimated total countywide shortfall: **\$37M/year**
- Public opinion surveys: could possibly raise **\$8M - \$12M/year** via Prop 218 election.

Conclusion?

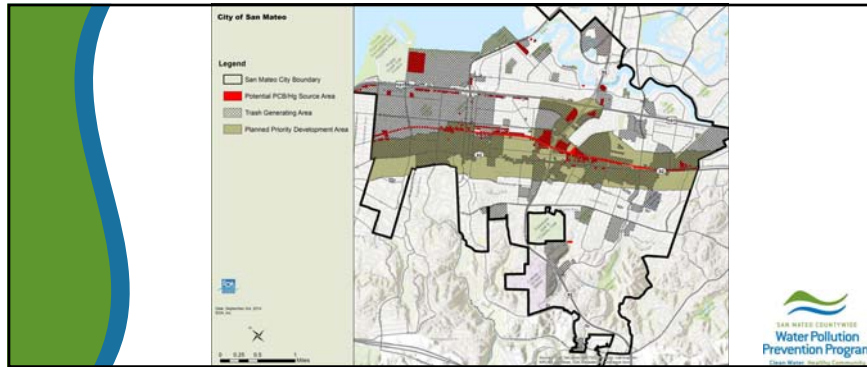
- Need other revenue or drive down costs



## Sustainable Communities Strategies

- Metropolitan Transportation Commission
  - \$14 billion for active transportation in Priority Development Areas by 2040
- Opportunity:
  - Large \$\$\$ going to projects that will likely impact the surface drainage system (curb and gutter).





## Sustainable Streets Plan

- Integrates GI and active transportation goals
  - Sets up local funding mechanism
  - Sets up City to compete for regional/state \$
  - Enables cost sharing based on multiple benefits**
- BUT...
- Still competing for siloed funding

