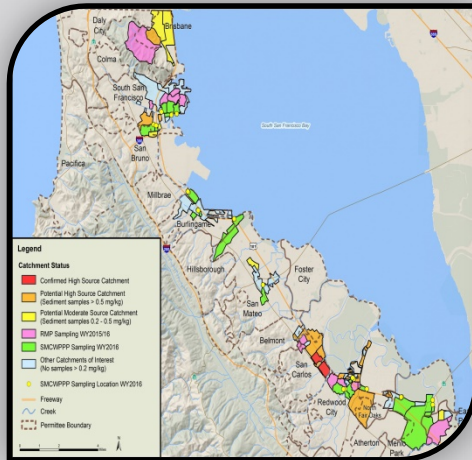


Compliance Support to Local Agencies in San Mateo County

Reissued Municipal Regional Permit (“MRP 2.0”)



Jon Konnan, P.E.
EOA, Inc.
February 18, 2016

Outline of Presentation

- General Support to Program Manager
- Subcommittee Support
- Trainings
- Annual Reporting
- Trash Load Reduction
- GI “No Missed Opportunities”
- Mercury and PCBs Controls
- Water Quality Monitoring



C/CAG Support to Permittees

Three fundamental ways that C/CAG helps Permittees to comply with municipal stormwater permit:

1. **Local level** - support Permittee compliance efforts (e.g., staffing committees, trainings, annual reporting)
2. **Countywide level** - perform certain tasks on behalf of all Permittees most efficiently implemented countywide (e.g., water quality monitoring)
3. **Regional level** - facilitate participation in regional projects through BASMAA



General Support to Program Manager

- **Work with Program Manger**
 - Overall strategic planning and budgeting
 - Monthly digest of Subcommittee meetings and trainings
- **Comprehensive compliance support documents**
 - Summary of MRP 2.0 tasks & submittal deadlines over entire permit term
 - Quarterly MRP compliance check-in doc
- **Planning & participating in upper-level committees**
 - Stormwater Committee
 - NPDES TAC
- **BASMAA**
 - BOD – review of agenda package and participate in meetings
 - Regional projects – project budgets and help oversee

Subcommittee Support

- Seven Countywide Program Subcommittees to continue meeting in near-term (while overall structure evaluated)
- Initial focus on new MRP 2.0 requirements
- Keep agency staff engaged/educated & info sharing
- Continue meeting quarterly
 - Municipal Maintenance
 - Commercial/Industrial/Illicit Discharge
 - New Development & Construction
 - Trash
- Reduce to semi-annual
 - Watershed Assessment and Monitoring
 - Parks Rec and IPM
- PIP supported by SGA



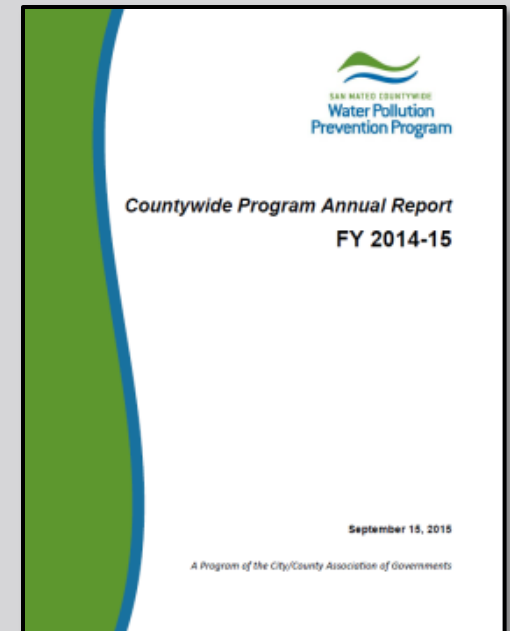
Trainings

- **Initial focus on new MRP 2.0 requirements**
- **Remainder of this fiscal year trainings**
 - Business Inspection and Illicit Discharge
 - Trash
 - Parks Rec and IPM
 - Construction Site Management
 - New /Redevelopment (with GI CIP review support)
- **Other options to workshop format under consideration**
 - Field trainings
 - Cost-effective technologies such as web-ex
 - Create videos of workshops for on-demand use
- **Effectiveness evaluation of trainings**
 - Rate the speakers and topics
 - Solicit suggestions for priority topics, improvements
 - Before and after quizzes (some audiences)



Annual Reporting

- Countywide Annual Report
- Guidance package – customized materials for SM County Permittees
- Annual reporting training workshop
 - Held annually in July
 - Essential early in permit term, consider cancelling later in term
- Review drafts of individual Permittee Annual Reports





Trash Load Reduction Support

- **Long-term Trash Load Reduction Planning**

- Evolving GIS: trash generation rates, TMAs, full capture treatment areas
- Optimizing suite of controls , including siting full capture devices

- **Litter Workgroup**

- Roundtable meetings/workshops with haulers, County recycling and waste management staff, and local agency staff
- Improve waste management practices (e.g., avoid container overages)
- Track and prevent illegal dumping
- Litter prevention outreach, coordinate with PIP (e.g., adopt-a-block)

- **Trash Load Reduction Assessment**

- EOA performs on-land visual assessments to document effectiveness
- Manage Countywide Program's visual assessment database

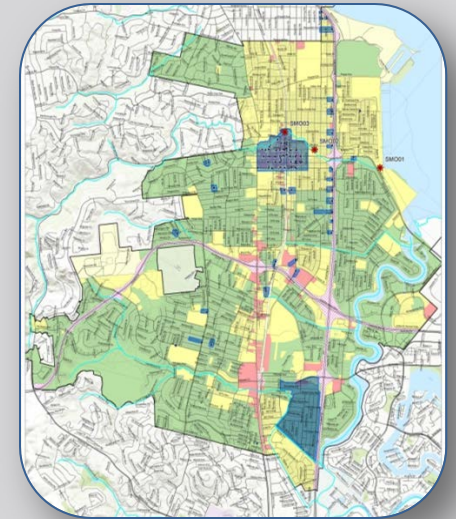
Trash Load Reduction Support

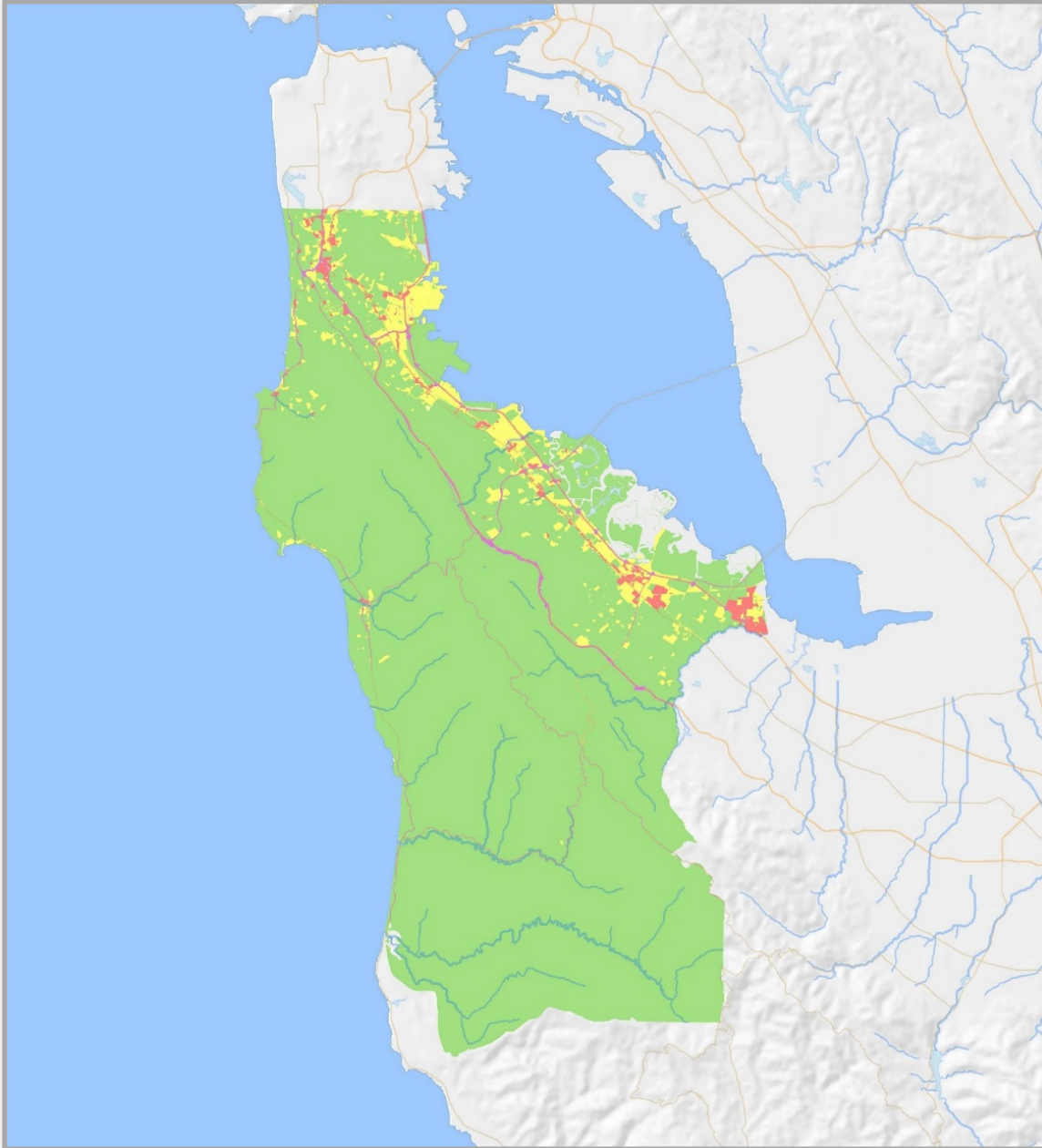
- **Trash Hot Spot (Creeks & Shorelines) Cleanup Tracking & Reporting**
 - Countywide Program trash hot spot database
 - Standardized reporting on volumes, types and sources
- **Full Trash Capture Device O&M Verification Program**
 - SOPs, tracking and reporting tools
 - Maintenance Subcommittee and trainings
- **Compliance Reporting**
 - Calculating load reductions from all controls: guidance and review
 - Offsets: creek/shoreline cleanup & non-storm drain system direct discharges



Trash Load Reduction Support

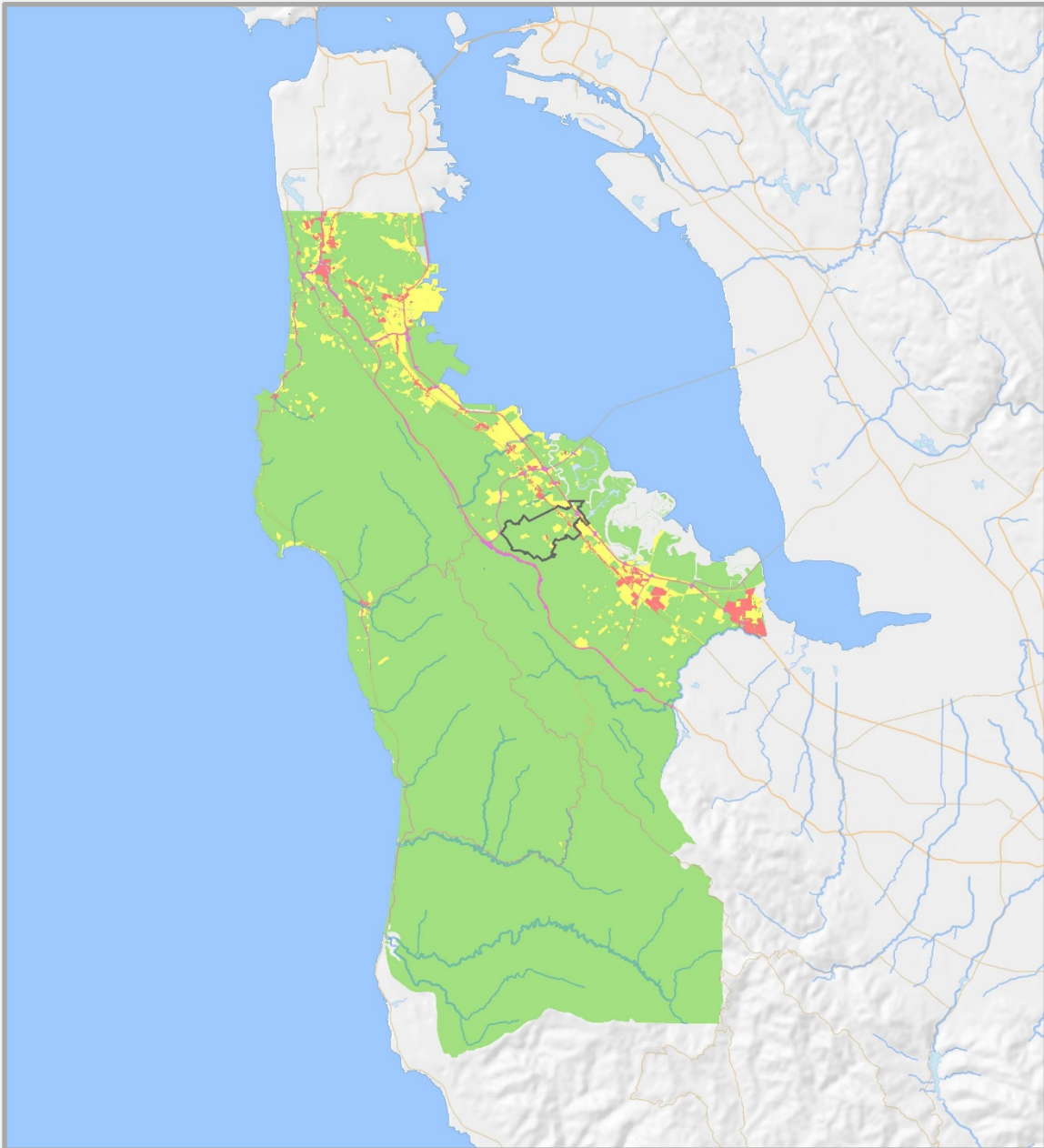
- Coordination with GI and PCBs/mercury
- Developing and testing receiving water monitoring program for trash – regional project
- Improve reporting & information sharing via Web tools





Trash Generation Rates San Mateo County

- [Atherton](#)
- [Belmont](#)
- [Brisbane](#)
- [Burlingame](#)
- [Colma](#)
- [Daly City](#)
- [East Palo Alto](#)
- [Foster City](#)
- [Half Moon Bay](#)
- [Hillsborough](#)
- [Menlo Park](#)
- [Millbrae](#)
- [Pacifica](#)
- [Portola Valley](#)
- [Redwood City](#)
- [San Bruno](#)
- [San Carlos](#)
- [San Mateo](#)
- [San Mateo County Unincorporated](#)
- [South San Francisco](#)
- [Woodside](#)



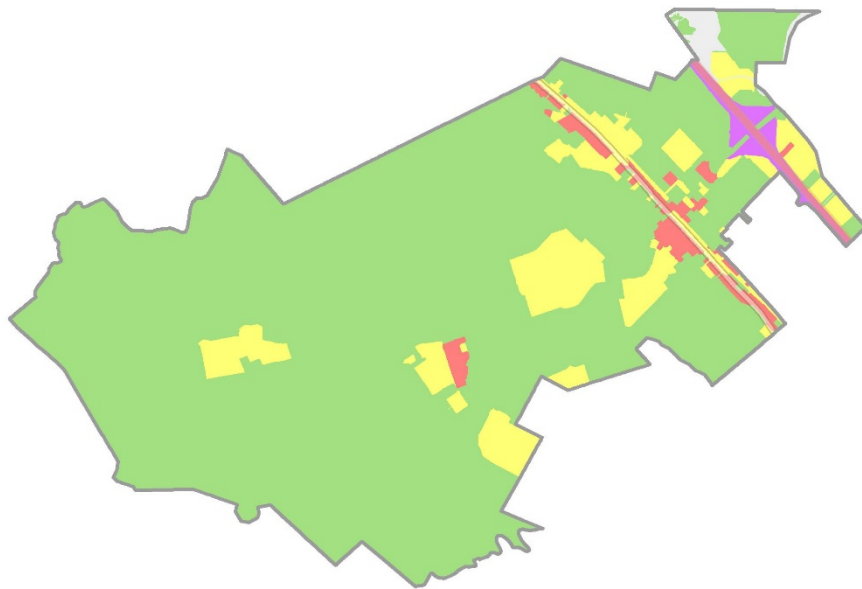
Trash Generation Rates San Mateo County

[Atherton](#)
[Belmont](#)

[Baseline Trash Generation](#)
[Trash Management Areas](#)
[Overall Percent Reduction To-Date](#)
[Trash Control Measures Implemented](#)
[Source Control](#)
[Institutional Controls](#)
[Full Capture Systems](#)

[On-Land Visual Assessment Results](#)
[Creek and Shoreline Hot Spots](#)

[Brisbane](#)
[Burlingame](#)
[Colma](#)
[Daly City](#)
[East Palo Alto](#)
[Foster City](#)
[Half Moon Bay](#)
[Hillsborough](#)
[Menlo Park](#)
[Millbrae](#)
[Pacifica](#)
[Portola Valley](#)
[Redwood City](#)
[San Bruno](#)



City of Belmont Trash Control and Reduction

Baseline Trash Generation

[Trash Management Areas](#)

[Overall Percent Reduction to Date](#)

[Trash Control Measures Implemented](#)

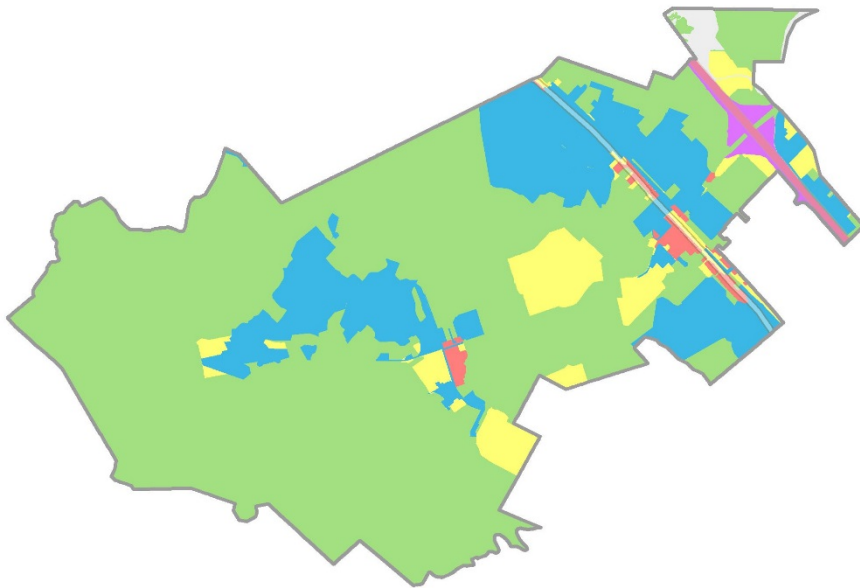
[Source Control](#)

[Institutional Controls](#)

[Full Capture Systems](#)

[On-Land Visual Assessment Results](#)

[Creek and Shoreline Hot Spots](#)



City of Belmont Trash Control and Reduction

[Baseline Trash Generation](#)

[Trash Management Areas](#)

[Overall Percent Reduction to
Date](#)

[Trash Control Measures
Implemented](#)

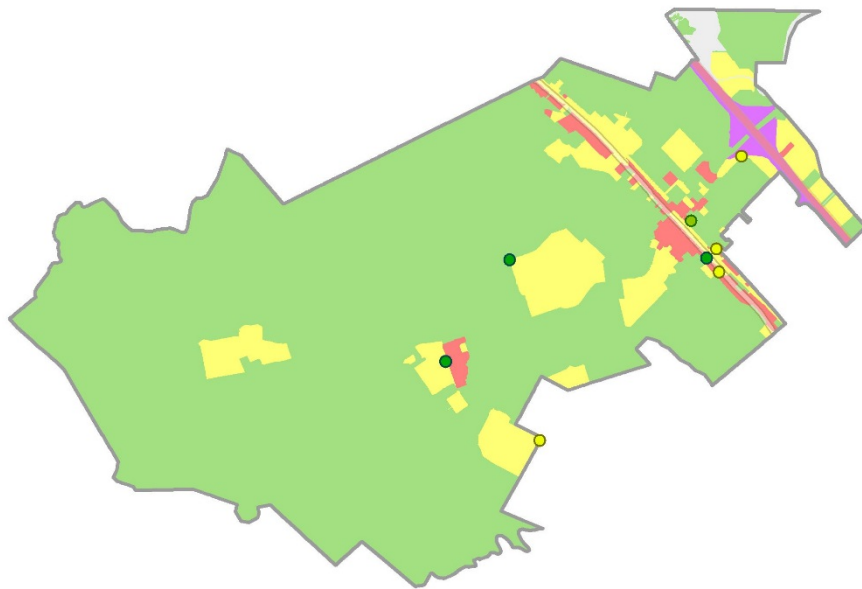
[Source Control](#)

[Institutional Controls](#)

Full Capture Systems

[On-Land Visual Assessment
Results](#)

[Creek and Shoreline Hot
Spots](#)



City of Belmont Trash Control and Reduction

[Baseline Trash Generation](#)

[Trash Management Areas](#)

[Overall Percent Reduction to
Date](#)

[Trash Control Measures
Implemented](#)

[Source Control](#)

[Institutional Controls](#)

[Full Capture Systems](#)

**On-Land Visual Assessment
Results**

[Creek and Shoreline Hot
Spots](#)

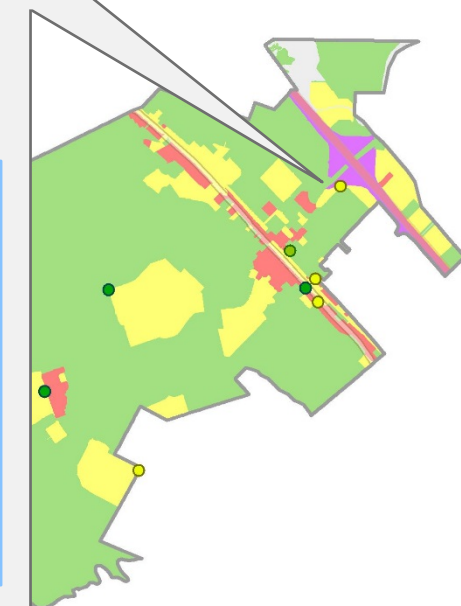
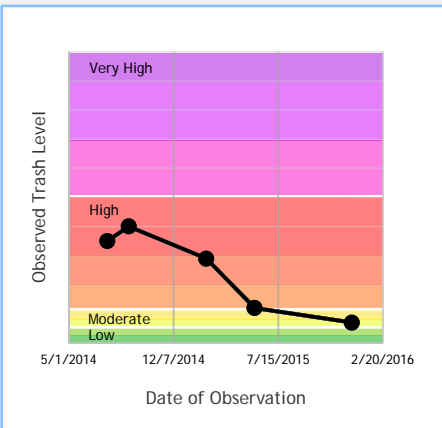
Site BEL0009

Latitude: 37.5247
Longitude: -122.271

Average Trash Generation Score
(Current Year):

Moderate

Trash Observations Over Time:



City of Belmont Trash Control and Reduction

[Baseline Trash Generation](#)

[Trash Management Areas](#)

[Overall Percent Reduction to
Date](#)

[Trash Control Measures
Implemented](#)

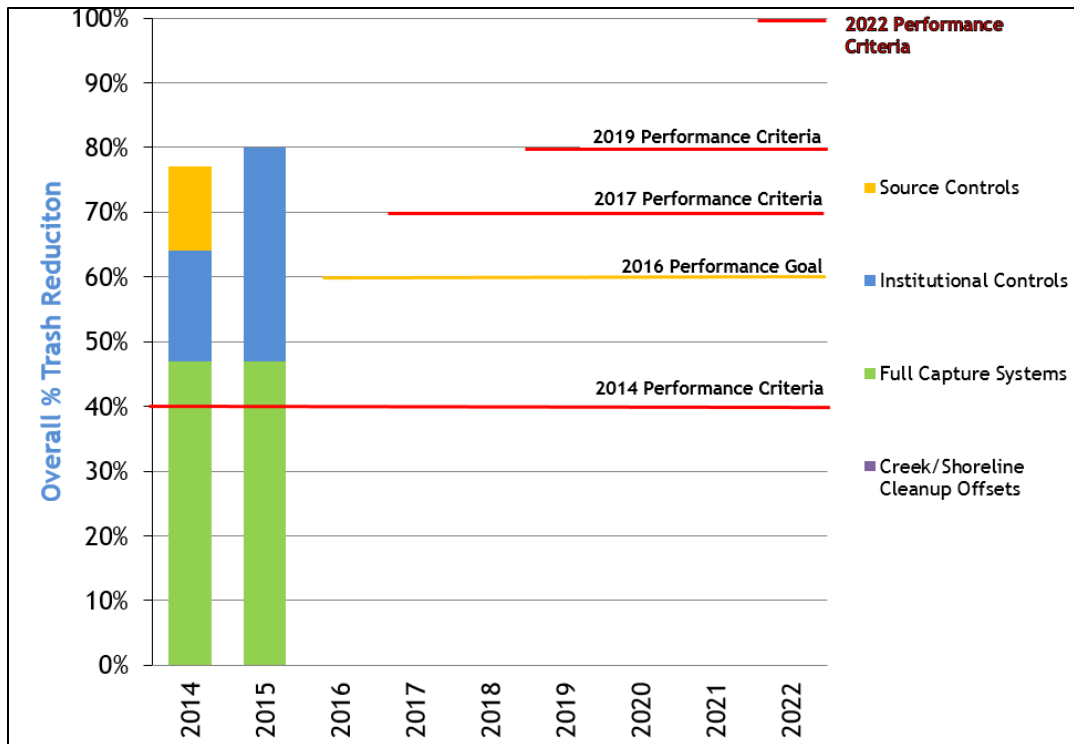
[Source Control](#)

[Institutional Controls](#)

[Full Capture Systems](#)

**On-Land Visual Assessment
Results**

[Creek and Shoreline Hot
Spots](#)



City of Belmont Trash Control and Reduction

[Baseline Trash Generation](#)

[Trash Management Areas](#)

**Overall Percent Reduction
to Date**

[Trash Control Measures
Implemented](#)

[Source Control](#)

[Institutional Controls](#)

[Full Capture Systems](#)

[On-Land Visual Assessment
Results](#)

[Creek and Shoreline Hot
Spots](#)



GI “No Missed Opportunities”

- Permittees must prepare & maintain list of planned GI projects & other projects with potential for GI measures
 - Permittees must conduct review of CIP projects
 - Public infrastructure projects with GI potential should include GI measures to the “maximum extent practicable”
 - Where not practicable, Permittees to document reasons why
- Permittees to submit summary with each Annual Report
- Key support task:
 - Develop criteria for determining practicability of incorporating GI measures into planned projects
 - Develop associated guidance for local agencies (consistency)
 - Cover at NDS meetings and ND trainings

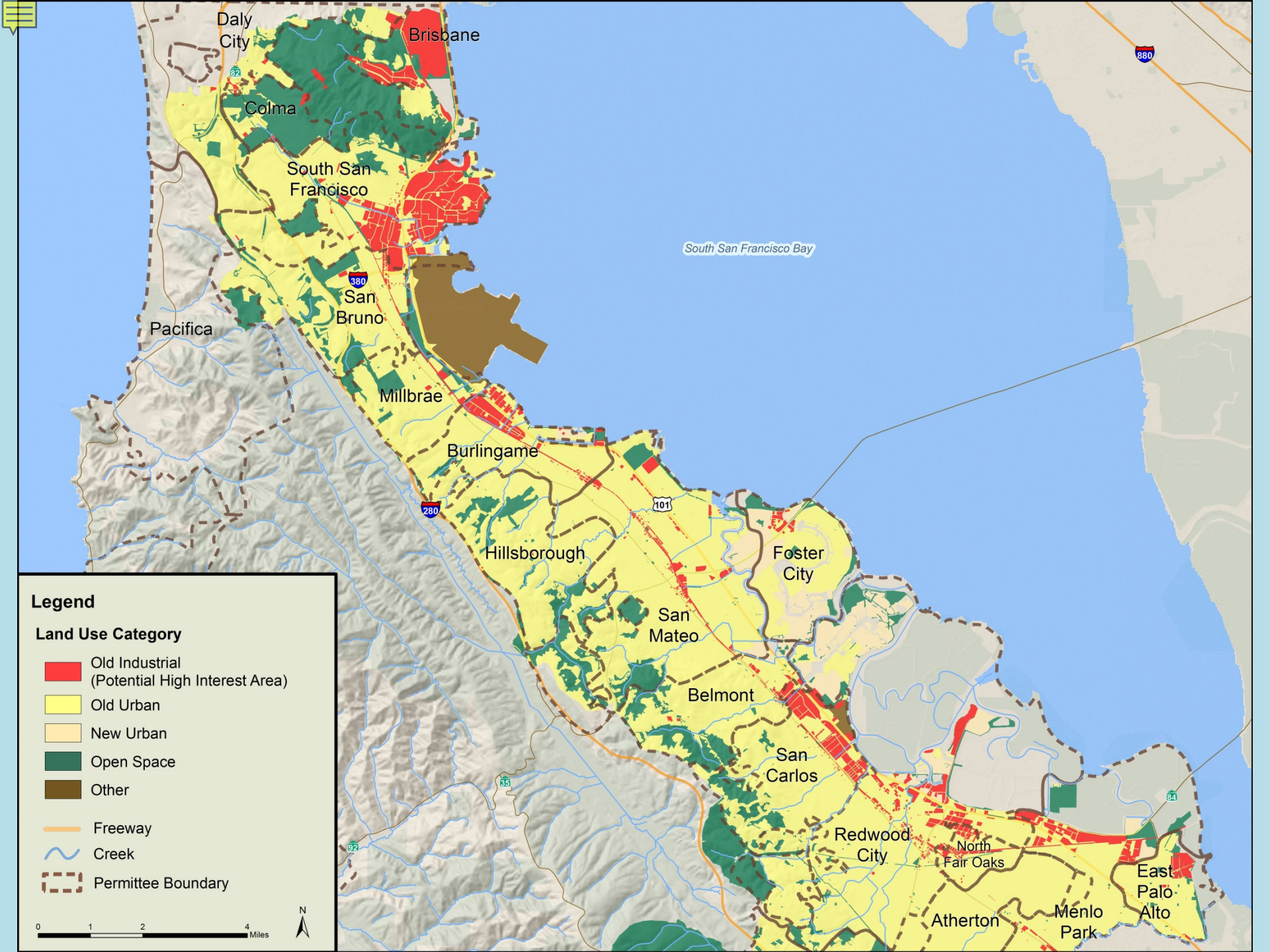
Examples of GI Opportunities



Hacienda Avenue:
Failing pavement, unsafe
large ROW



Southgate Neighborhood:
Flooding problems, no storm
drains, had funds



Legend

Land Use Category

- Old Industrial (Potential High Interest Area)
- Old Urban
- New Urban
- Open Space
- Other

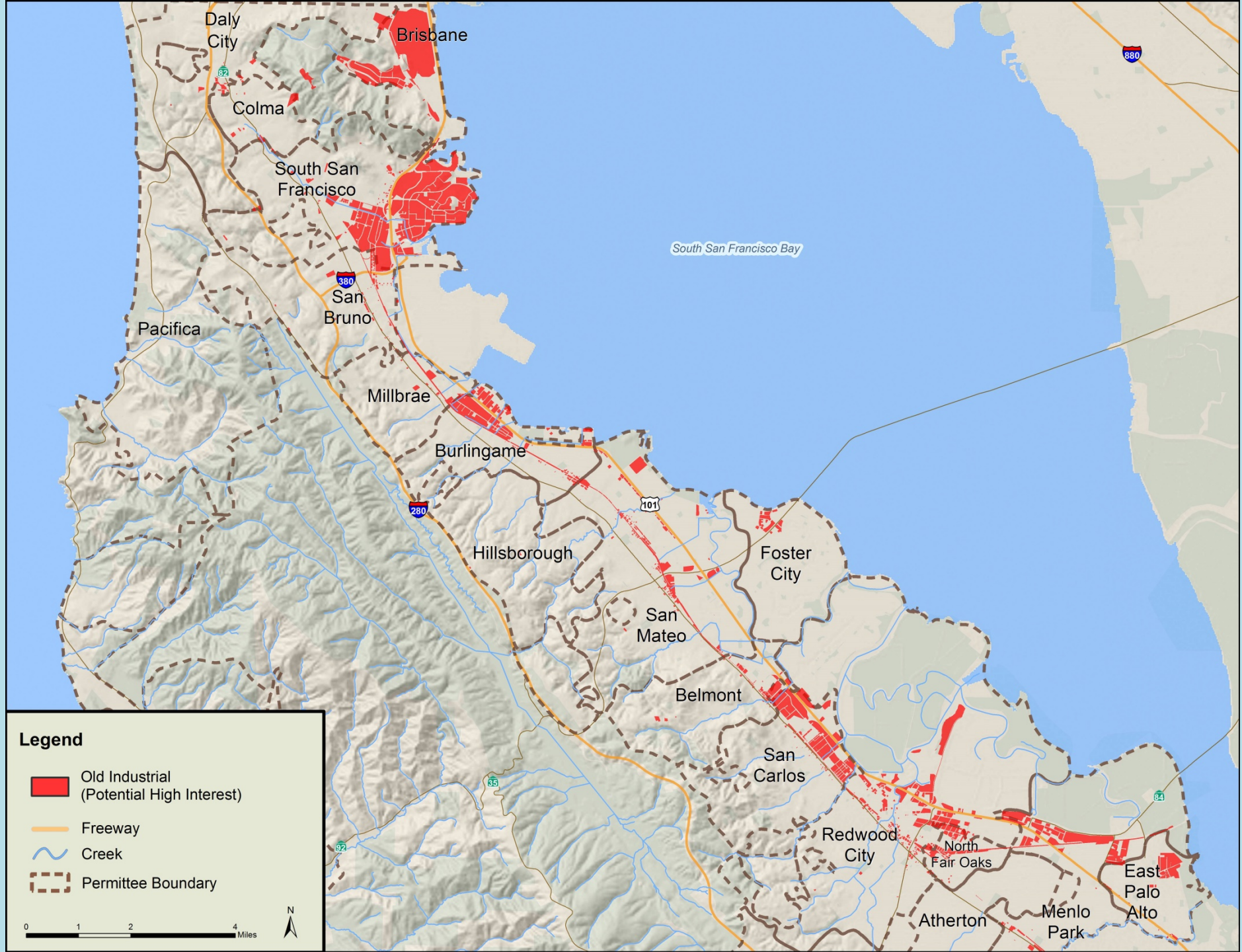
Freeway

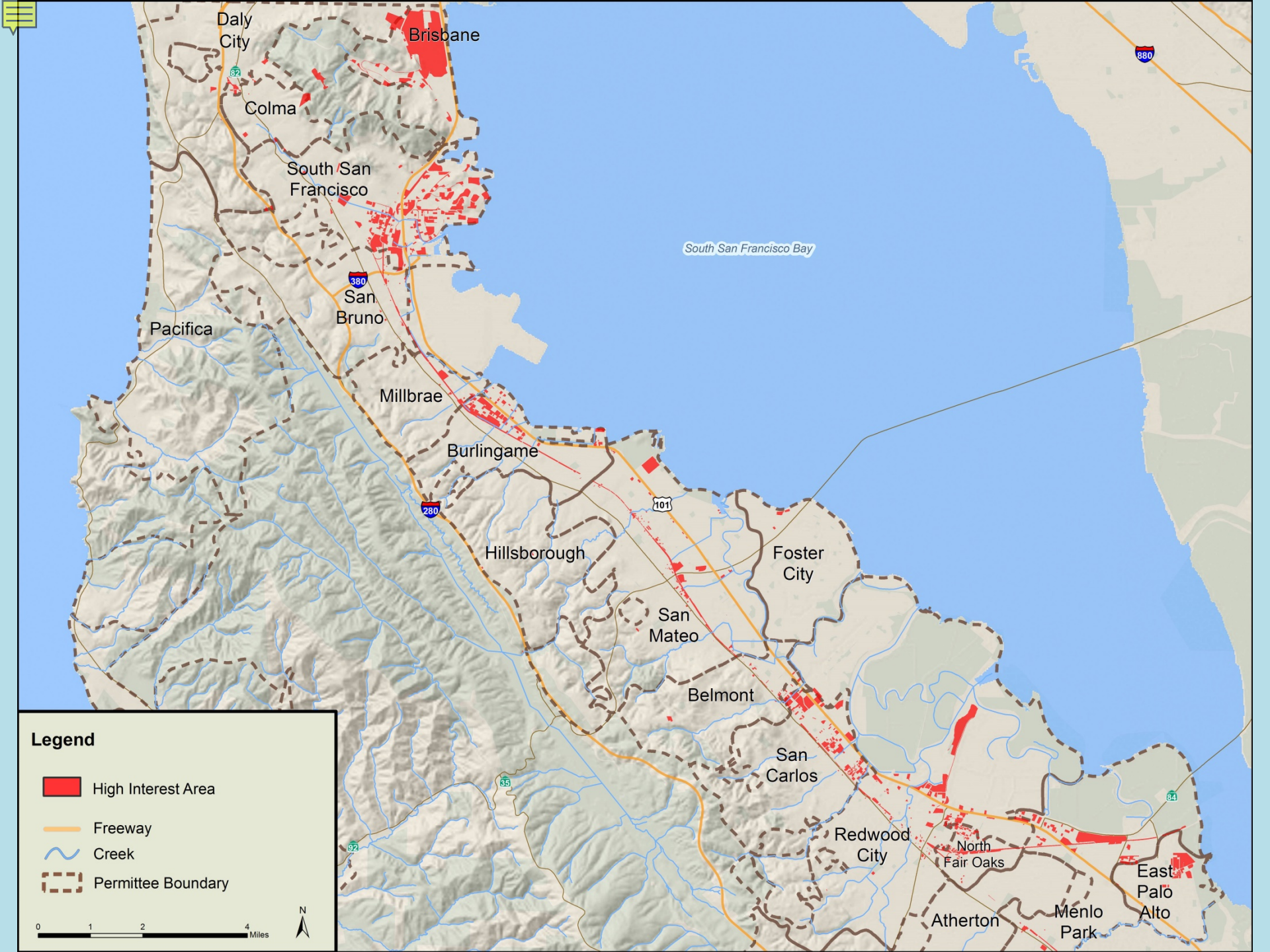
Creek

Permittee Boundary





0 1 2 4 Miles

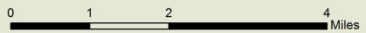
N

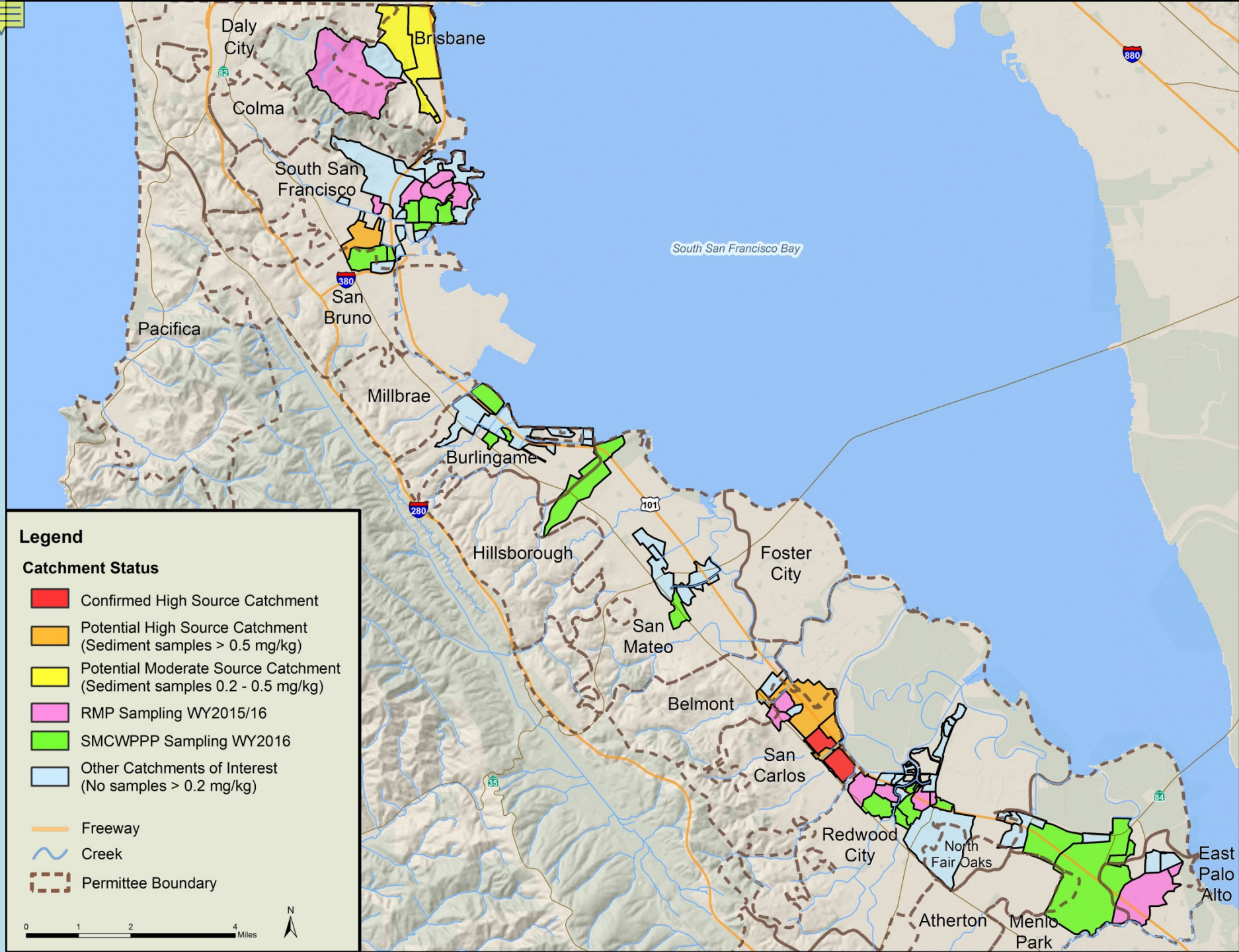




Legend

-  High Interest Area
-  Freeway
-  Creek
-  Permittee Boundary





Legend

Catchment Status

- Confirmed High Source Catchment
- Potential High Source Catchment (Sediment samples > 0.5 mg/kg)
- Potential Moderate Source Catchment (Sediment samples 0.2 - 0.5 mg/kg)
- RMP Sampling WY2015/16
- SMCWPPP Sampling WY2016
- Other Catchments of Interest (No samples > 0.2 mg/kg)
- Freeway
- Creek
- Permittee Boundary





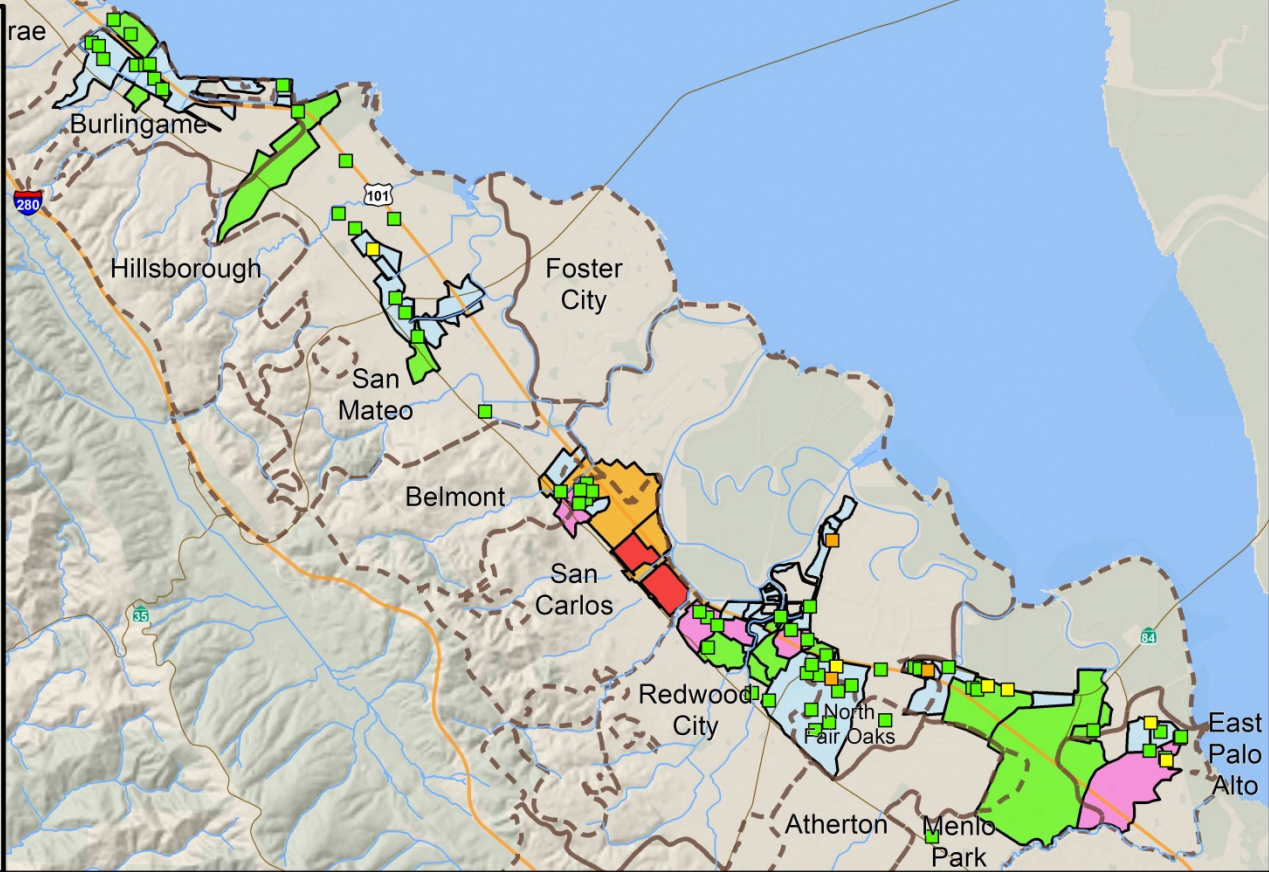
Legend

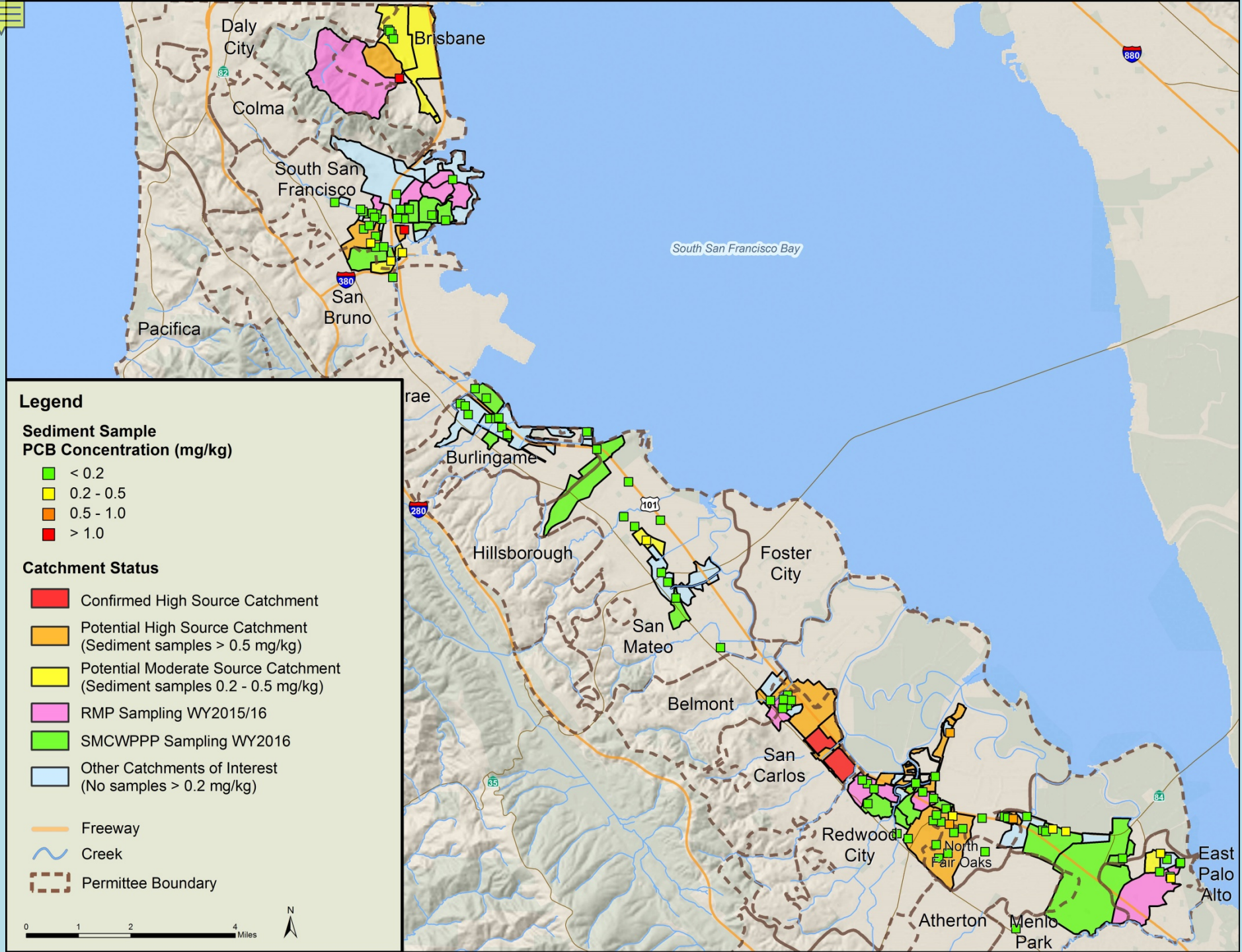
Sediment Sample PCB Concentration (mg/kg)

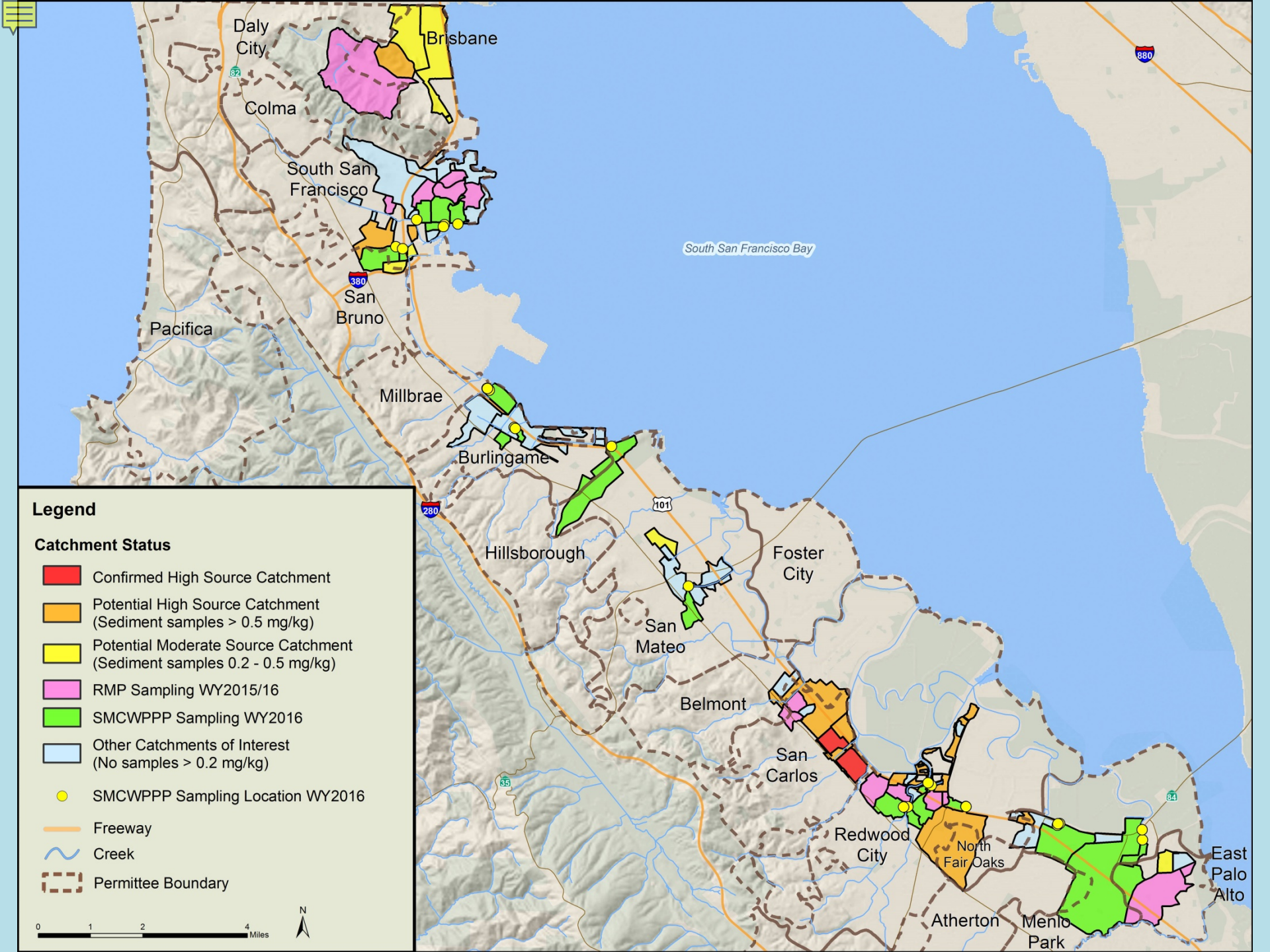
- < 0.2
- 0.2 - 0.5
- 0.5 - 1.0
- > 1.0

Catchment Status

- Confirmed High Source Catchment
- Potential High Source Catchment (Sediment samples > 0.5 mg/kg)
- Potential Moderate Source Catchment (Sediment samples 0.2 - 0.5 mg/kg)
- RMP Sampling WY2015/16
- SMCWPPP Sampling WY2016
- Other Catchments of Interest (No samples > 0.2 mg/kg)
- Freeway
- Creek
- Permittee Boundary



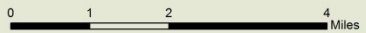




Legend

Catchment Status

- Confirmed High Source Catchment
- Potential High Source Catchment (Sediment samples > 0.5 mg/kg)
- Potential Moderate Source Catchment (Sediment samples 0.2 - 0.5 mg/kg)
- RMP Sampling WY2015/16
- SMCWPPP Sampling WY2016
- Other Catchments of Interest (No samples > 0.2 mg/kg)
- SMCWPPP Sampling Location WY2016
- Freeway
- Creek
- Permittee Boundary



Water Quality Monitoring

- Performed by Countywide Program on behalf of Permittees
- Local agency staff assistance
 - Access to sites
 - Selection of some targeted sites
- Focus is on receiving waters (i.e., creeks)
- Pollutants of Concern (POC) monitoring (in storm drainage infrastructure) to help with identifying mercury and PCBs management watersheds



Questions?



Jon Konnan, P.E.
EOA, Inc.
510/832-2852 x.111
jkonnan@eoainc.com