

A scenic sunset over a bay with a large flock of birds in flight. The sun is low on the horizon, casting a warm orange glow across the sky and water. The birds are silhouetted against the bright light, creating a dense pattern of dark shapes. In the background, there are low mountains or hills. The overall mood is peaceful and natural.

Measure AA

The Clean and Healthy Bay Initiative

June 2016

Dave Pine
San Mateo County Supervisor
Chair, SF Bay Restoration Authority



Photo by Vivian Reed



Photo by Dan Sullivan



Photo by Dan Sullivan

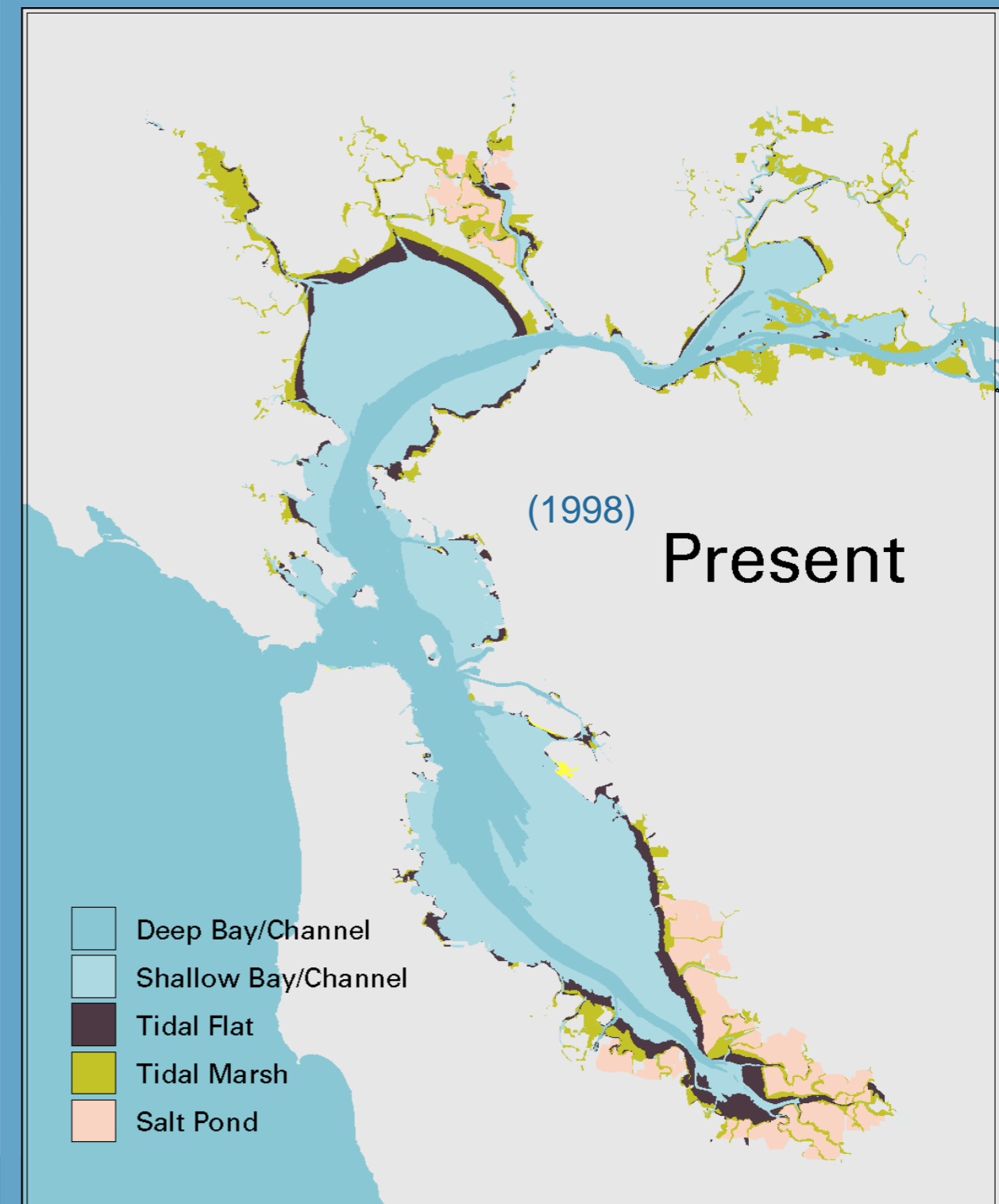
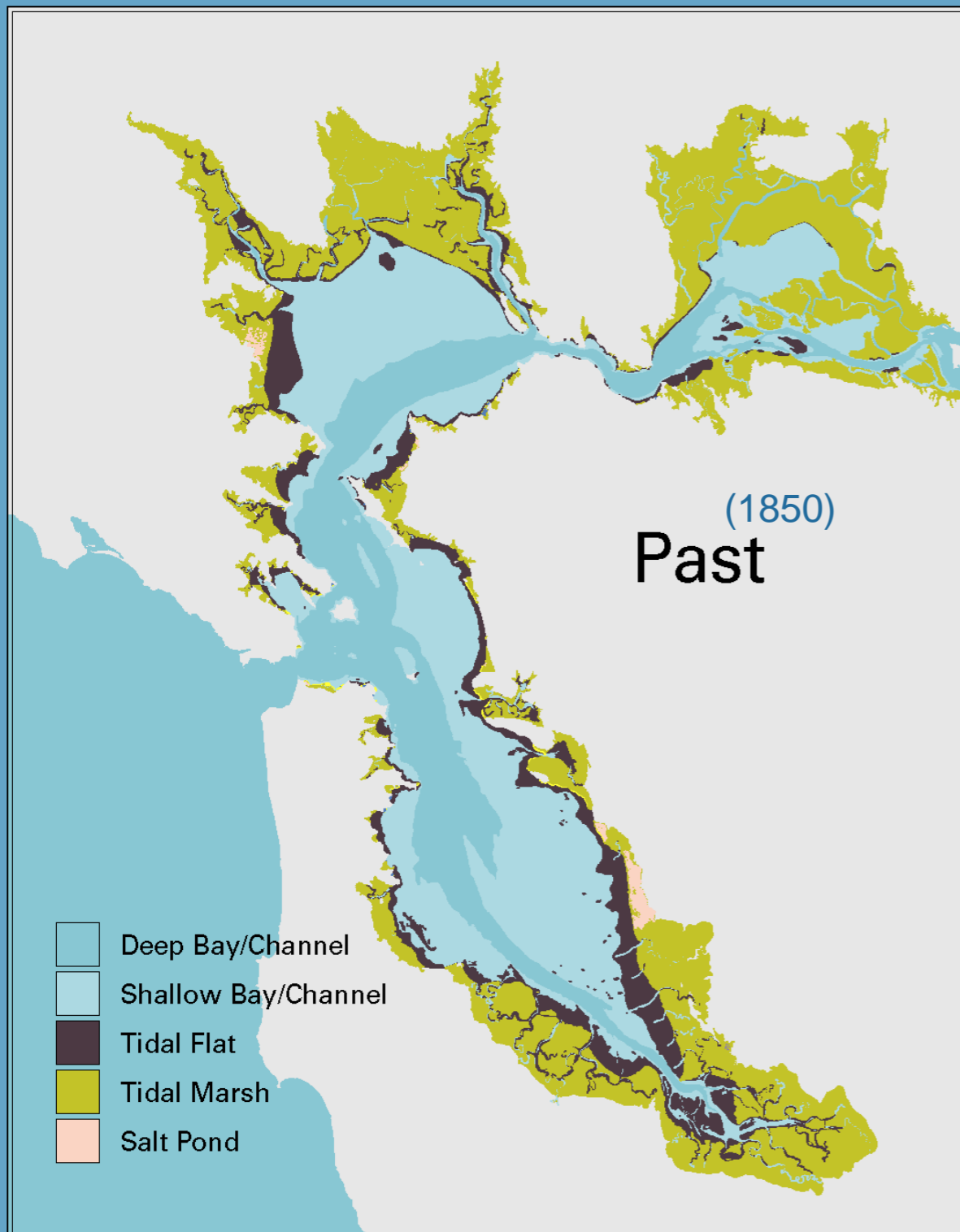


Photo by Vivian Reed



**150 years of
urbanization
has altered
San Francisco
Bay**

Tidal marsh habitat for fish and birds has been reduced dramatically





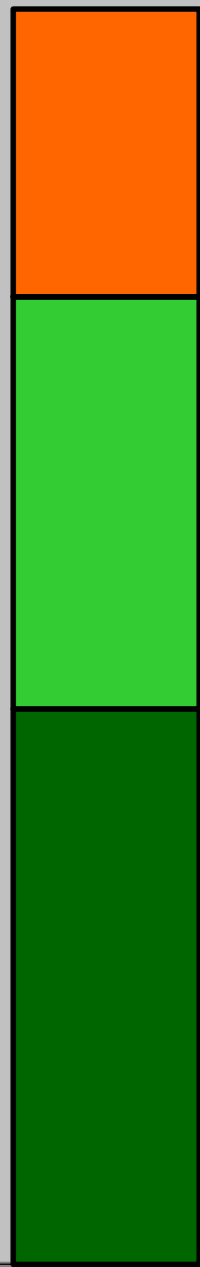
60 Years Ago

Thousands of acres of Bay fill



100,000 Acres of Tidal Marsh Needed for a Healthy Bay

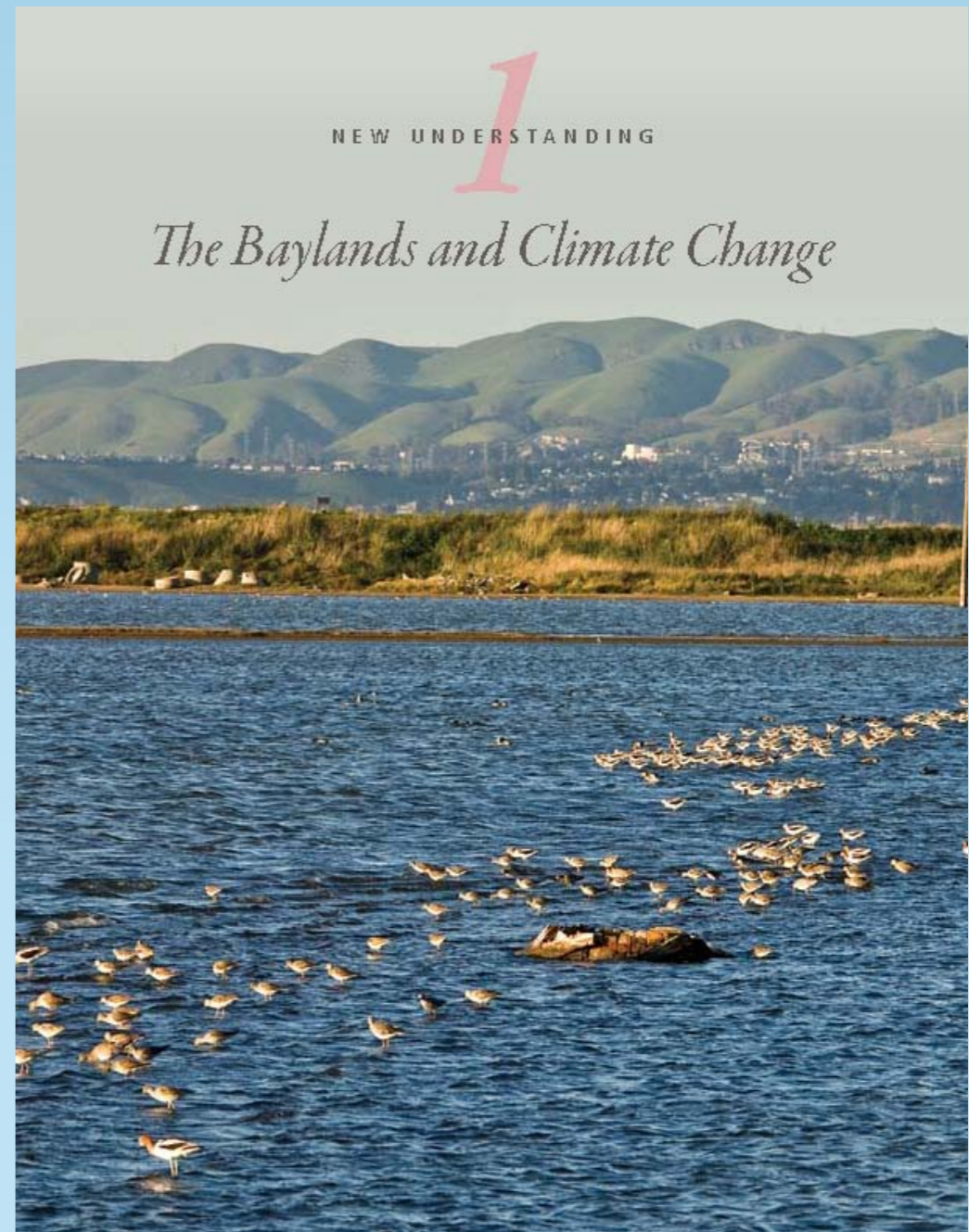
100,000



22,000 acres to be secured

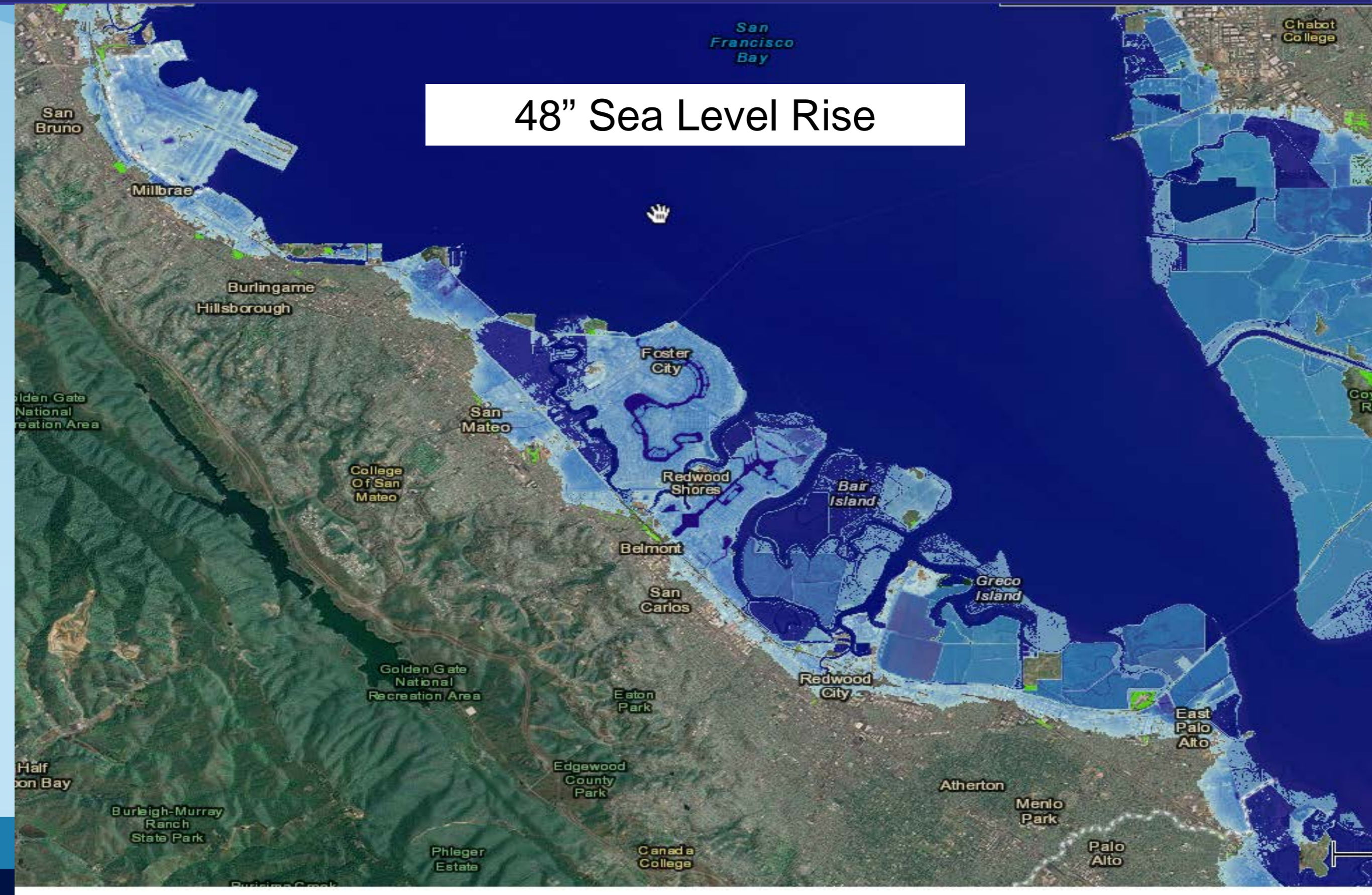
35,000+ acres secured for restoration

44,000 acres today



The Bay and Climate Change: A Growing Threat

48" Sea Level Rise



Sea Level Rise: A Growing Threat

NATIONAL RESEARCH COUNCIL REPORT ON SLR PROJECTIONS FOR CALIFORNIA

Year	Projections	Ranges
2030	6 +/- 2 inches	2 to 12 inches
2050	11 +/- 4 inches	5 to 24 inches
2100	36 +/- 10 inches	17 to 66 inches



Water surface elevation from sea level rise and storm surge

Sea Level Rise Scenario	Daily Tide	Extreme Tide (Storm Surge) Levels						
	Water Level above MHHW	1-yr	2-yr	5-yr	10-yr	25-yr	50-yr	100-yr
Existing Conditions	0	12	19	23	27	32	36	41
MHHW + 6-inch	6	18	25	29	33	38	42	47
MHHW + 12-inch	12	24	31	35	39	44	48	53
MHHW + 18-inch	18	30	37	41	45	50	54	59
MHHW + 24-inch	24	36	43	47	51	56	60	65
MHHW + 30-inch	30	42	49	53	57	62	66	71
MHHW + 36-inch	36	48	55	59	63	68	72	77
MHHW + 42-inch	42	54	61	65	69	74	78	83
MHHW + 48-inch	48	60	67	71	75	80	84	89
MHHW + 54-inch	54	66	73	77	81	86	90	95
MHHW + 60-inch	60	72	79	83	87	92	96	101
MHHW + 66-inch	66	78	85	89	93	98	102	107

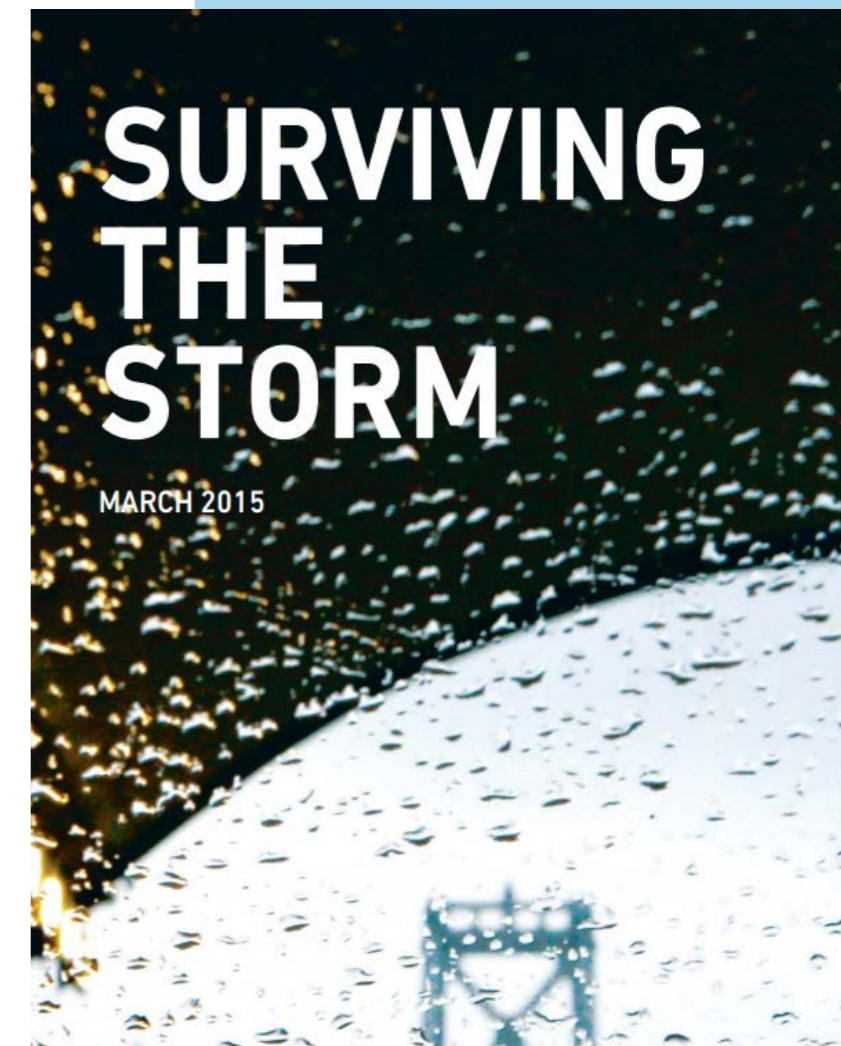
(Water levels in inches)



Severe Storm Risk

SUMMARY OF DAMAGES BAY AREA (MILLIONS OF DOLLARS)

Damage Category	Estimated Damages
Structural damages	\$5,932
Content damages	\$4,180
Air transportation delay damages	\$86
Road transportation delay damages	\$78
Electricity service interruption costs	\$125
Total	\$10,401





IMPORTANCE OF TIDAL MARSH

➤ Provide Habitat for Fish & Wildlife

➤ Filter Out Pollution

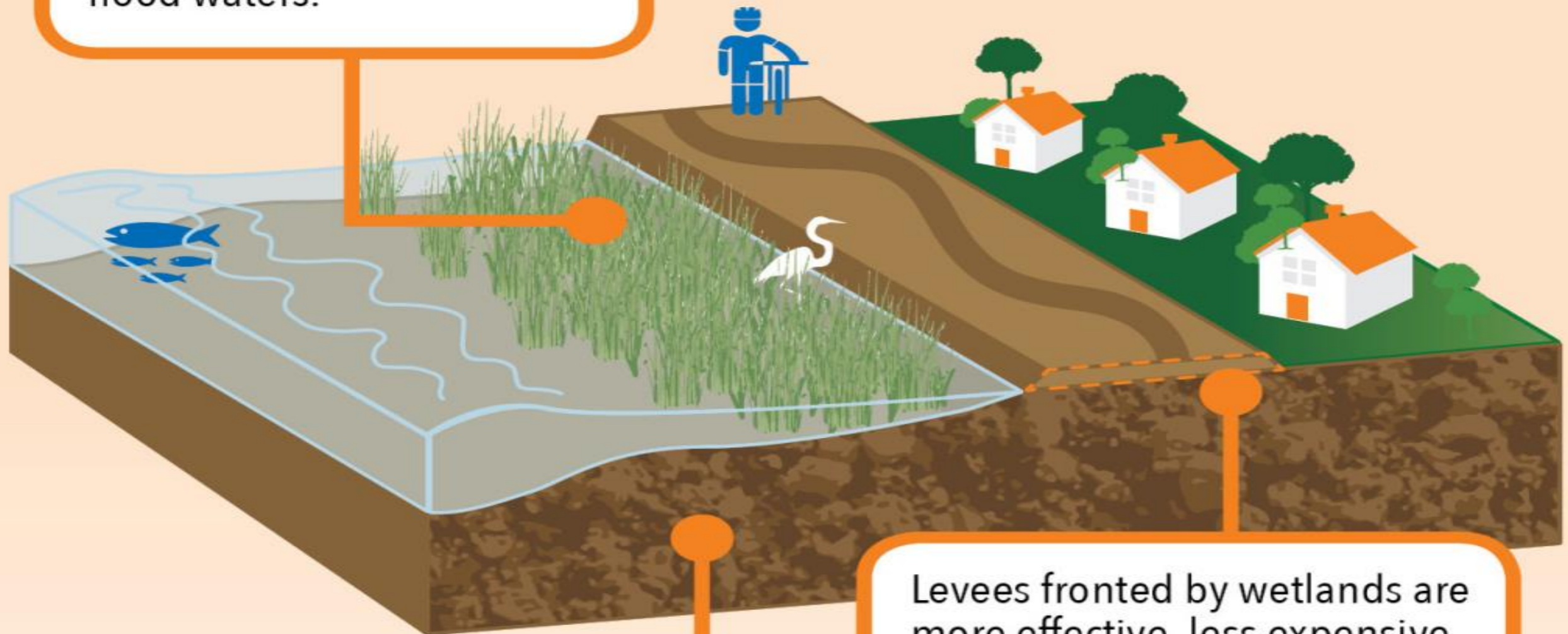
➤ Open Space & Recreation Opportunities

➤ Enhance Quality of Life & Economy

➤ Flood Prevention & Sea Level Rise Mitigation

Restored Wetlands Protect Us

Healthy wetlands function as natural sponges that trap and slowly release rain and flood waters.



Wetlands can adapt to sea level rise by accumulating silt over time, preventing erosion.

Levees fronted by wetlands are more effective, less expensive and provide public access, as well as flood protection.

Information from USGS, EPA and Wetlands International

San Francisco Bay Restoration Authority

- Regional special district created in 2008
- Mission: Raise and allocate funding for wetlands restoration, protection, and public access to Bay
- Governing Board: Seven elected officials from each quadrant of the Bay Area
- Advisory Committee comprised of community stakeholders



Clean and Healthy Bay Ballot Measure

June 2016



Photo credit: Rick Lewis

- \$12 annual parcel tax for 20 years
- Would generate ~\$500 million to accelerate wetlands restoration and leverage state and Federal funds
- Needs 2/3 support in all nine counties, cumulatively, to pass
- Recent tracking poll found strong majority of likely June voters in favor



Clean and Healthy Bay Ballot Measure

June 2016



Revenues to be used to:

- Habitat restoration
- Levy construction and repair
- Trail signage repair, improved trail access
- Shoreline cleanup
- Trash capture where creeks enter into Bay

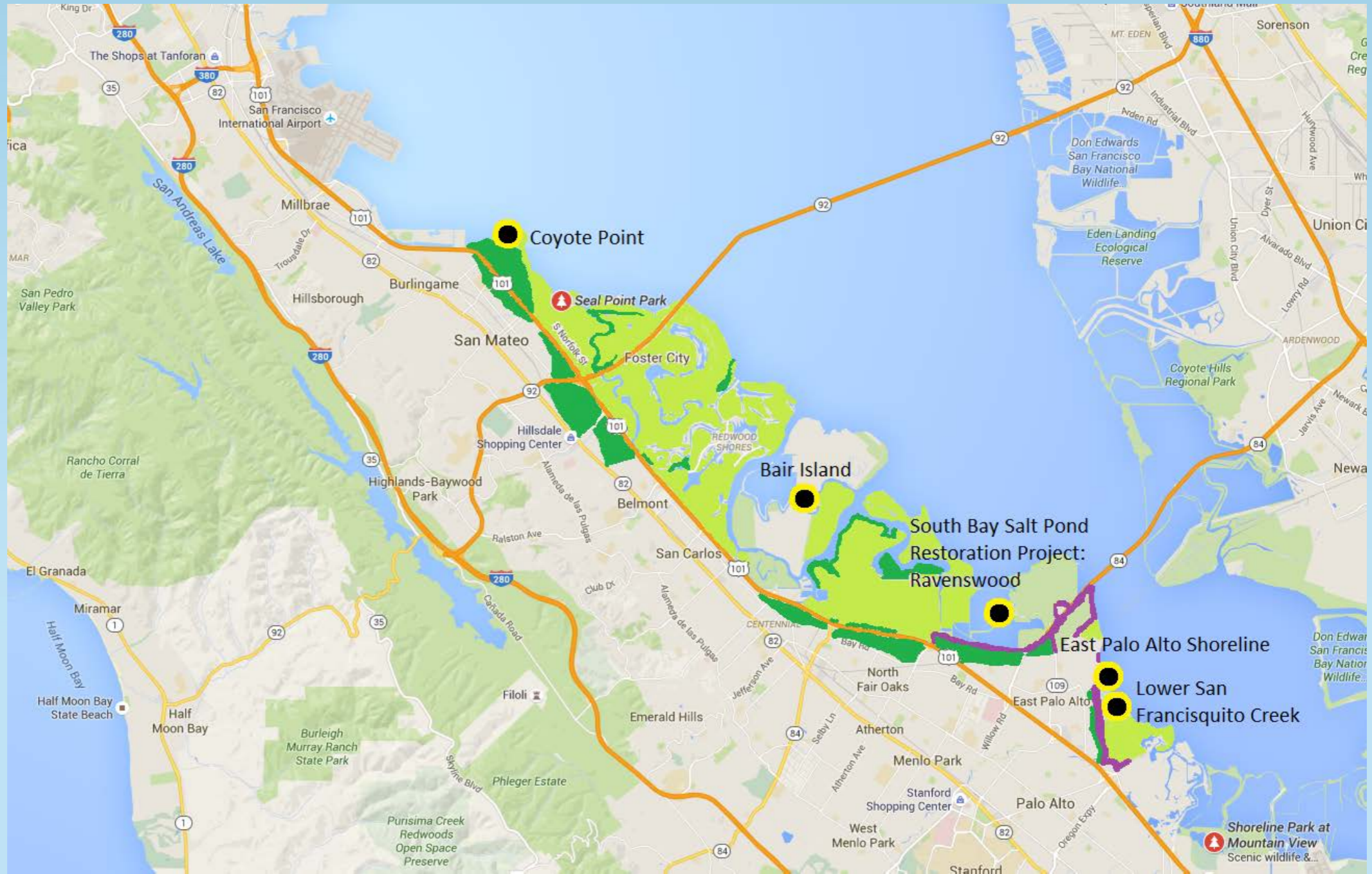
Eligible Projects Throughout Bay Area

- 50% of revenue allocated to four Bay regions, based on population
- Other 50% competitive
- West Bay (SF and San Mateo Co.) to receive 11% minimum



Examples of Likely Eligible Projects in San Mateo County

-  Restoration Project
-  Levee Project
-  2 ft. sea level rise
-  4 ft. sea level rise



People for a Clean and Healthy Bay



- Other Key Supporters: Audubon California; Ducks Unlimited; Sonoma Land Trust; Trust for Public Land



Support is Growing

San Jose Mercury News

“Bay Area voters in June should back Measure AA” –
Mercury News Editorial, Feb 26, 2016

Members of Congress

Business Groups

Bay Area Mayors

Environmental Organizations

State Legislators

Political Organizations

County Supervisors

Local Elected Officials and Community
Leaders

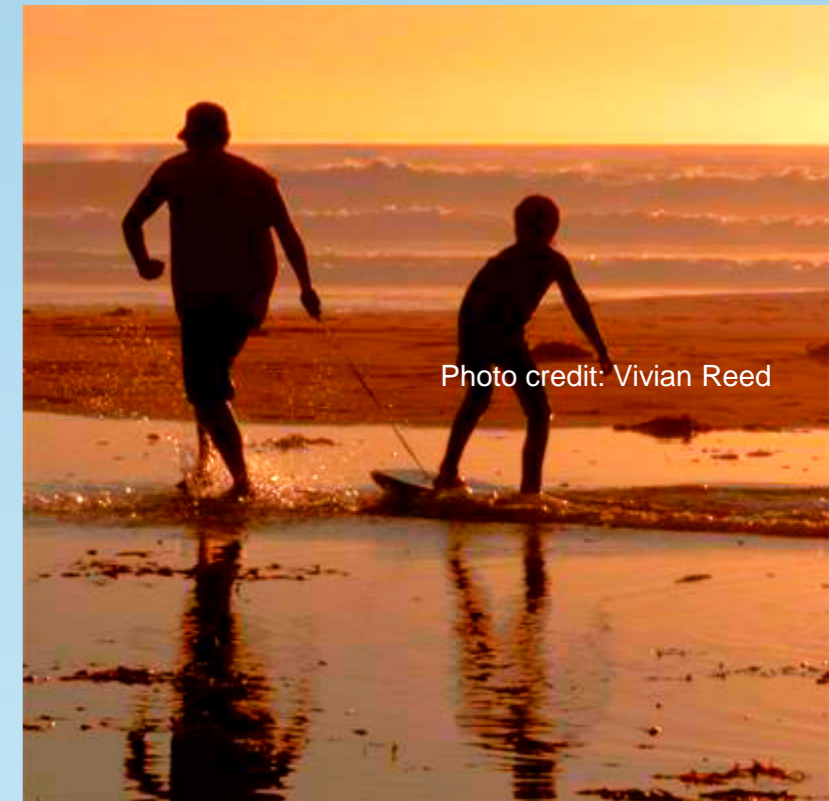
Public Agencies

Full list available at www.peopleforacleanandhealthybay.org



The Election and the Campaign

- Measure transmitted to all nine Bay Area county registrars for placement on the ballot
- Lead county, Santa Clara, will prepare ballot materials and distribute to other registrars
- Ballot issues (letter, placement, ballot costs)
- \$2-5 million campaign



What You Can Do



- Endorse the measure
- Spread the word, promote it with peers
- Consider serving on San Mateo County Area Committee, or identify other leaders who may be willing to serve
- Vote for the measure in June



Questions?



Photo credit: Vivian Reed

www.peopleforacleanandhealthybay.org

