

# Current Status of Trash Load Reductions and Other Trash Management/Monitoring Activities in San Mateo County



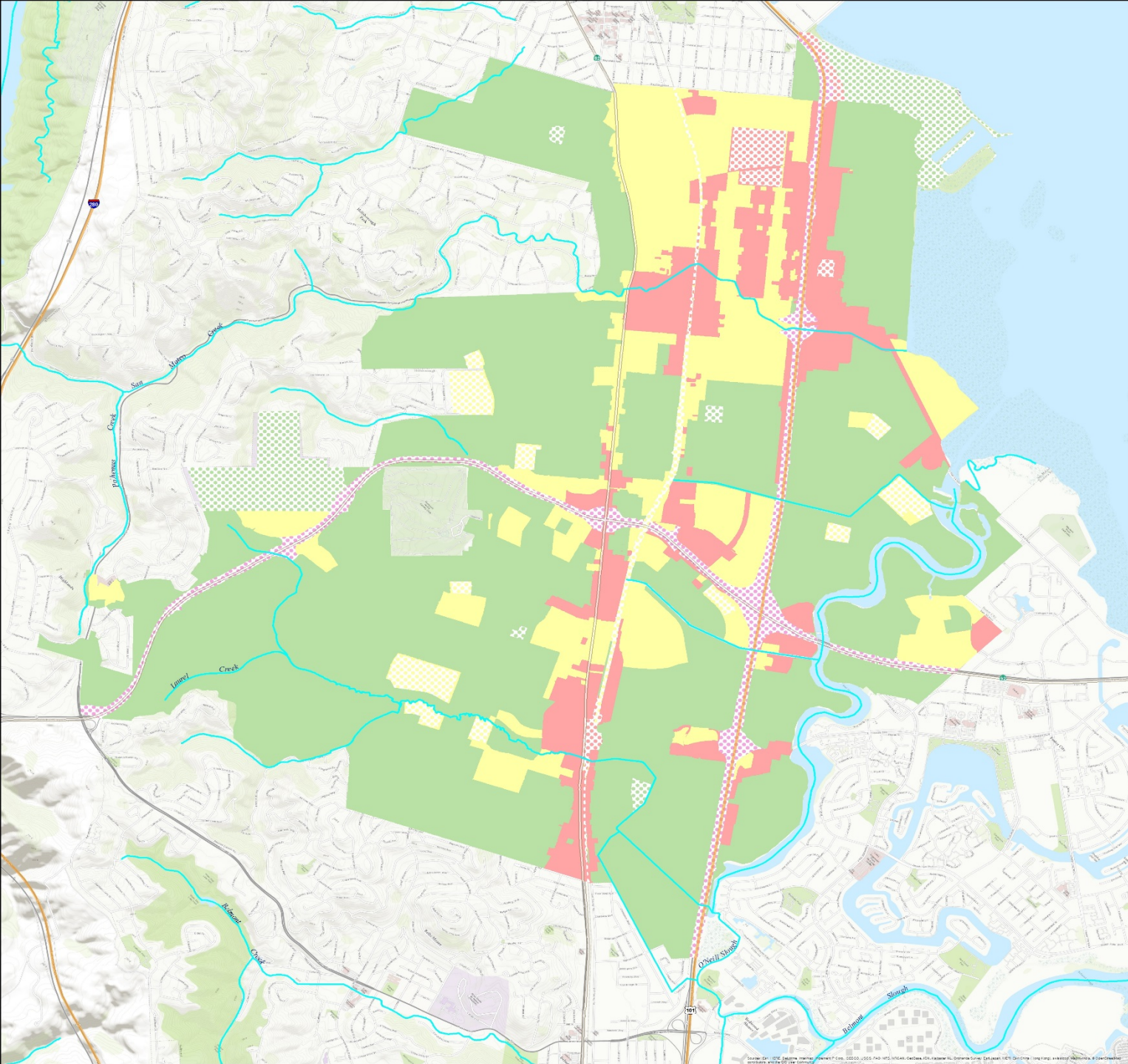
**Matthew Fabry, P.E.**

Manager, Countywide Water Pollution Prevention Program

March 9, 2017

# Municipal Regional (Stormwater) Permit (MRP) Provision C.10

- **Trash Load Reduction Targets**
  - 40% by July 2014
  - 60% by July 2016 (performance guideline)
  - 70% by July 2017 (mandatory/enforceable)
  - 80% by July 2019
  - 100% (no adverse impacts) by July 2022
- **Mandatory Full Capture Systems**
- **Receiving Water Monitoring Program**
- **Annual Creek/Shoreline Cleanups**
- **Maintain Long-Term Plan**



## Trash Generation Category

Very High

High

Moderate

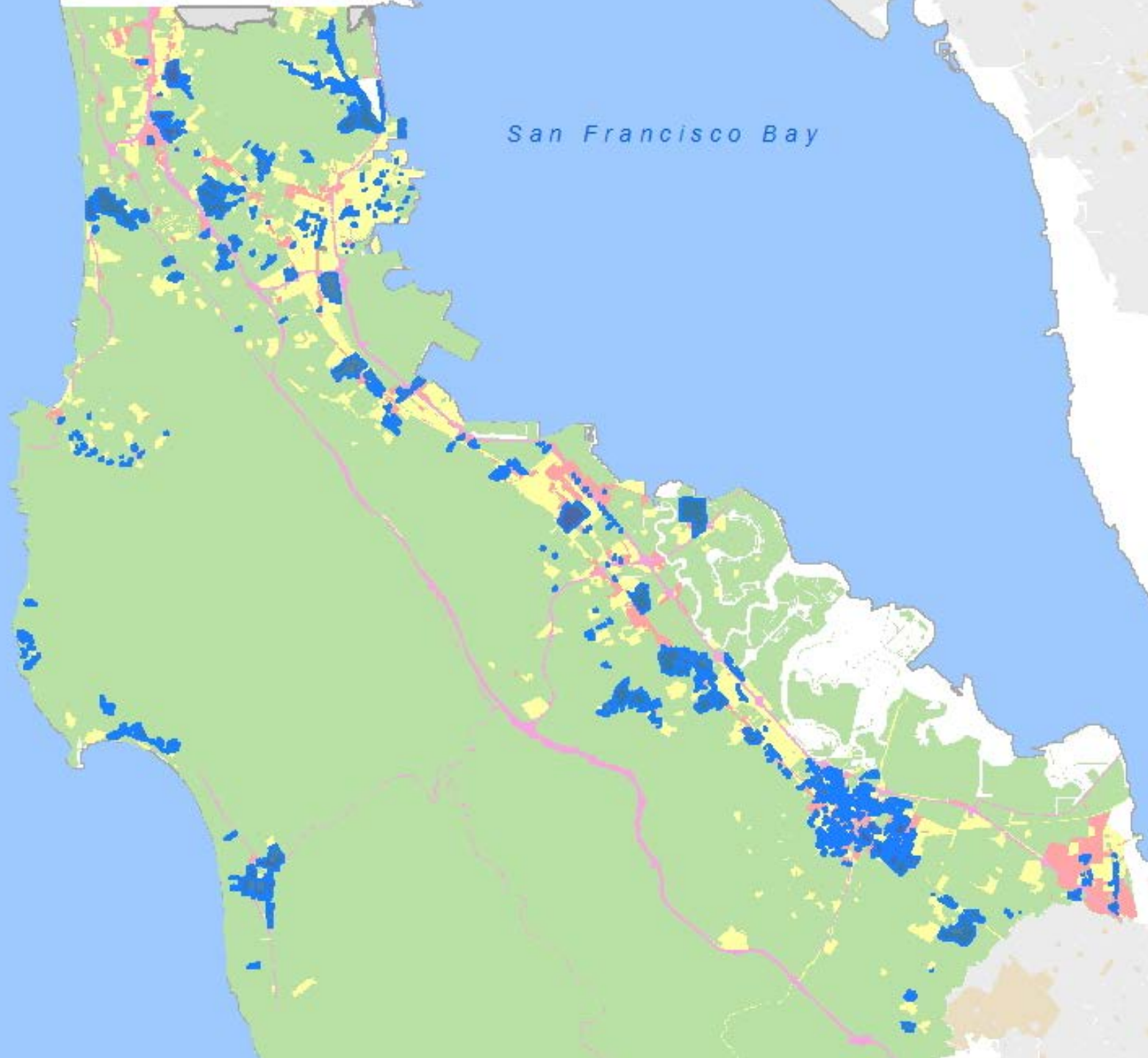
Low



# Extent of Trash Full Capture

- **San Mateo Countywide**
  - All member agencies exceeded the minimum treatment areas required by the MRP
  - Over 2,400 acres of moderate, high, and very high trash generating areas treated to-date
  - Began implementing enhanced maintenance and operation tracking and reporting
  - **~21% trash reduction** due to full capture systems





Trash  
Generation  
Category

Very High

High

Moderate

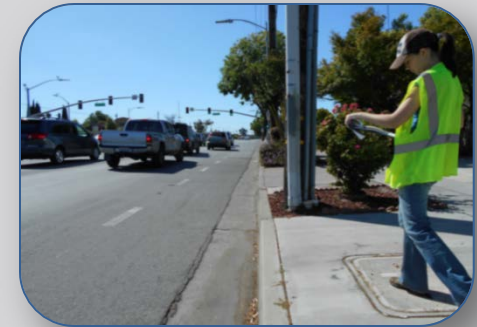
Low

Treated by Full  
Capture Device

# On-land Visual Assessments

## (Other Control Measures)

- Assessment method used to account for trash reductions from actions other than full capture systems
  - Enhanced street sweeping
  - Reoccurring on-land cleanup events
  - Enhanced business inspection programs
  - Other actions
- **San Mateo Countywide**
  - Over 1,100 assessments conducted to-date
  - >210 miles of streets/sidewalks assessed
  - **~19% trash reduction** observed to-date



# Source Controls

- Reusable bag ordinances
- Expanded polystyrene food service ware ordinances
- **10% trash reduction** for most member agencies
  - Maximum allowed under MRP



# Additional Creek and Shoreline Cleanups

- Offsets for cleanups conducted above and beyond those required by MRP 2.0
- 3:1 offset
- Maximum 10% reduction allowed under MRP
- Reductions vary among member agencies





# Summary of SMCWPPP Member Agency Trash Reductions in FY 15-16

- Member agency Annual Reports submitted to the Water Board on September 30<sup>th</sup>
- 14 of 21 member agencies achieved > 60% reduction
- Those member agencies < 60% developed and submitted an “action plan” with annual report
  - Describes actions that will be taken to achieve a 70% reduction by July 1, 2017
  - Vast majority of member agencies electing to install full capture systems to address future reduction goals

# Water Board Review of FY 2015-16 Annual Reports

- Water Board reviewed annual reports – Issued letter to all permittees
- Binned Permittees into 3 categories:
  - Achieved performance guideline of 60% reduction (14 permittees in San Mateo)
  - Did not achieve guideline but submitted an adequate action plan (5 in San Mateo)
  - Did not achieve guideline and did not submit an adequate action plan (2 in San Mateo)
- Informational item at March 8<sup>th</sup> Water Board meeting

# Trash Receiving Water Monitoring Plan

- MRP requires submittal of a plan to monitor local waterways by June 30, 2017
  - Requires approval by Water Board Executive Officer, peer review and stakeholder input
- Plan under development via BASMAA regional project
- SMCWPPP required to begin implementation by October 1, 2017



# SMCWPPP Litter Work Group

- Work group of Trash Subcommittee
  - Municipal staff (stormwater and solid waste/recycling)
  - Waste hauler staff
- Forum to coordinate on broader litter/trash issues in San Mateo County
- Previous/Current Tasks
  - Roundtables on improving waste management
  - Mapping of illegal dumping and container “overages”
  - Tool kit for Improved Waste Management at MFRs
- Proposed FY 17-18 work plan under development





# Questions?

