



Safe Routes to School & Green Streets Infrastructure Pilot Program

Reid Bogert
Stormwater Program Specialist

San Mateo Countywide Water
Pollution Prevention Program



SAN MATEO COUNTYWIDE
**Water Pollution
Prevention Program**

Clean Water. Healthy Community.
www.flowstobay.org

Congestion Management Program Technical Advisory
Committee & Stormwater Committee

June 15, 2017

SRTS & Green Streets Infrastructure Call for Projects

The primary goal of this pilot program is to demonstrate that green infrastructure can be cost-effectively integrated with traditional Safe Routes to School infrastructure projects to enhance safety and achieve stormwater pollutant reductions.

Project Funding

- Up to \$2 million available for local assistance
 - Equal funding from local vehicle registration fees (Measure M – SRTS and AB1546 – Countywide Stormwater Pollution Reduction)
 - 15% local cash match required for eligible capital costs
 - \$100,000 - \$250,000 per project (2 project limit per jurisdiction = \$500,000 total)

Eligible Applicants

- Local governments (cities, towns and the County) in San Mateo County

Eligible Projects

- Infrastructure only (e.g., educational programs are not eligible)
- Only eligible capital costs are reimbursable
- In a Walk Audit or Pedestrian/Bike Plan – or located within a ½ mile radius of a school with adequate justification
- Balanced integration of SRTS and green infrastructure

Eligible Project Components

- Vegetated curb extensions
- Pedestrian bulb-outs (in combination with stormwater features)
- Pedestrian striping/crosswalks
- Curb ramps
- Signage
- At intersections or mid-block crossings



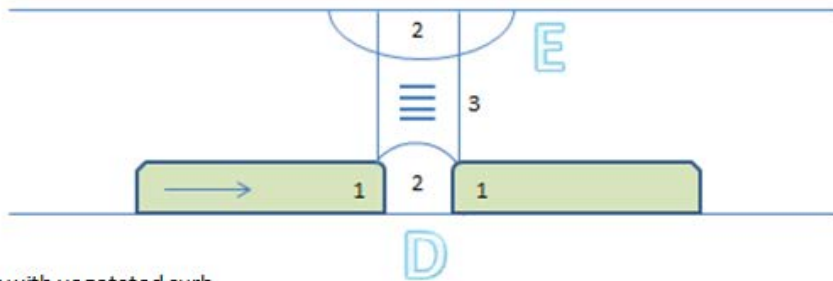
Project Scenarios:

A – Low point with flow from both directions toward the intersection treated by two vegetated curb extensions with a pedestrian bulbout and crossings

B – Flow from one direction going around the corner, treated with a single vegetated curb extension adjacent to a pedestrian bulbout and crossings

C – High point with flow running in both directions away from the intersection with a standard bulbout, crossings and stormwater features located elsewhere





Project Scenarios:

D – Mid-block crossing with vegetated curb extensions on either or both side(s) of crossing

E – Mid-block crossing with a standard bulbout and stormwater features located elsewhere

Ineligible Components

- In order to balance funding for stormwater and SR2S infrastructure, the pilot program will not fund:
 - Pedestrian streetlights
 - Rectangular rapid flash beacons
 - Illuminated crosswalks
 - Raised crosswalks

Ineligible Components (cont.)

- Landscaping elements not designed to capture and manage stormwater, unless proposed as part of a pedestrian bulbout that is not suitable for stormwater management due to site constraints
- Porous pavement/asphalt/concrete or pavers in-lieu of vegetated curb extensions or bulbouts



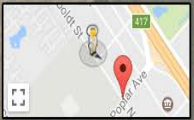
*Laurel
Elementary
City of San
Mateo*



*Laurel
Elementary
City of San
Mateo*



615 N Humboldt St
San Mateo, California
Street View - Apr 2015



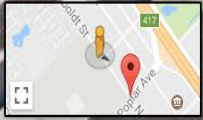
*Humboldt St.
Curb Extensions
and Bulb-outs
City of San Mateo*

Google

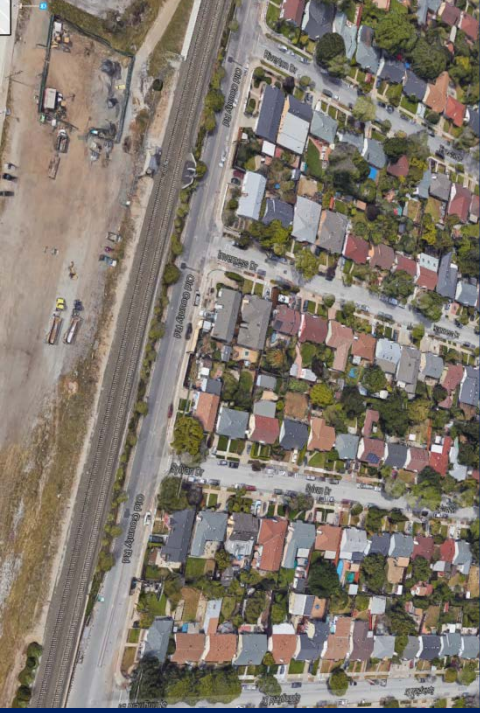




613 N Humboldt St
San Mateo, California
Street View - Feb 2017



*Humboldt St.
Curb Extensions
and Bulb-outs
City of San Mateo*



333 Old County Rd
San Carlos, California
Street View - Apr 2011

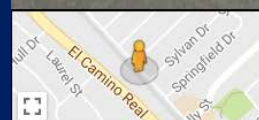


*Old County Rd.
Curb Extensions
City of San Carlos*



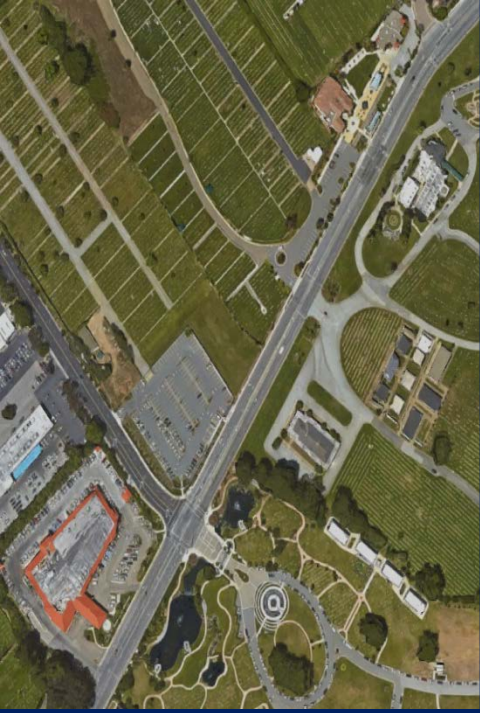


*Old County Rd.
Curb Extensions
City of San Carlos*

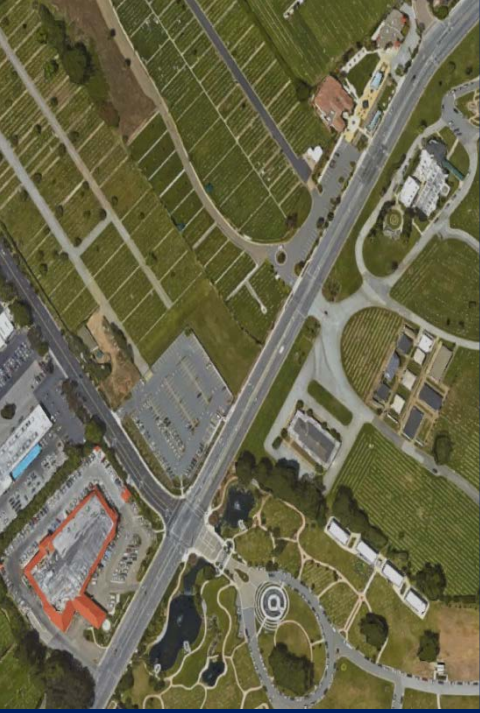


Google





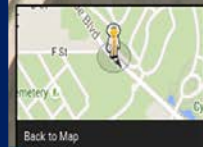
*Hillside Blvd
Curb
Extensions
Town of Colma*



1647 Hillside Blvd
Colma, California
Street View - Mar 2015



*Hillside Blvd
Curb
Extensions
Town of Colma*



Google



*Delaware St
Curb Extensions
City of San
Mateo*



*Delaware St
Curb Extensions
City of San
Mateo*

**Design for C.3 Sizing for Stormwater
Treatment**



Application Requirements

- Letter of support from School District
- Map of project area and land use information
- Project schematic or conceptual design, with stormwater feature sizing calculations and drainage delineation
- Long-term operations and maintenance plan with funding identified
- Preliminary budget and schedule

Additional Scoring Criteria

- Additional community letters of support
- Integration of educational signage
- Benefitting schools that participate in SRTS or are practicing SRTS initiatives (e.g., established in existing plans or participating in community outreach efforts)
- Address localized drainage or flooding issues
- Readiness to proceed
- Identified in other local or countywide plans (bike/ped master plans, complete/sustainable streets plans, community-based transportation plans, etc.)

Schedule (tentative)

- C/CAG Board considers call – July 13
- Release call for projects – Mid-July
- Applications Due – Mid-September
- C/CAG Committees review selection panel recommendations – October
- C/CAG Board considers recommended projects – November 9
- Projects completed – October 2019



C/CAG Staff:

- Matthew Fabry, Program Manager
(650) 599-1419 mfabry@smcgov.org
- Reid Bogert, Stormwater Program Specialist
(650) 599-1433 rbogert@smcgov.org
- Eliza Yu, Transportation Programs Specialist
(650) 599-1453 eyu@smcgov.org

