

The logo features a dark blue horizontal banner with a white border. The text 'Commute.org' is centered in white. The banner is decorated with white silhouettes of various plants and flowers, including daisies, ferns, and a dandelion seed head. Below the banner is a white rectangular area containing the tagline.

Commute.org

Where commuters get rewarded.

Presentation Overview

- Agency Overview
- FY17-18 Program Update
- Upcoming Events
- Questions

The logo for Commute.org is displayed within a white circle. The text "Commute.org" is written in a blue, sans-serif font. The circle is positioned on the right side of the slide, overlapping a dark blue vertical bar that runs down the right edge of the page.

Commute.org

Agency Overview

- **Focus:** Reduce SOVs traveling to, from or through San Mateo County
- **Structure:**
 - JPA – 18 members
 - Board – elected officials
 - Staff – 8 full-time, 1 AmeriCorps Fellow
- **Funding Partners:**
 - C/CAG
 - SM County Transportation Authority
 - MTC
 - BAAQMD (TFCA thru C/CAG)
 - Private Sector Shuttle Consortiums

The logo for Commute.org is displayed within a white circle that is partially overlaid by a dark blue vertical bar on the right side of the slide. The text "Commute.org" is written in a blue, sans-serif font and is enclosed in a thin yellow rectangular border.

Commute.org

Commute.org Board of Directors

Michael Lempres
Atherton

Davina Hurt
Belmont

Clifford Lentz**
Brisbane

Emily Beach
Burlingame

Rae Gonzalez
Colma

Glenn Sylvester
Daly City

Carlos Romero
East Palo Alto

Sam Hindi
Foster City

Harvey Rarback
Half Moon Bay

Shawn Christianson
Hillsborough

Gina Papan
Millbrae

Sue Digre
Pacifica

Jeffrey Gee*
Redwood City

Rico Medina
San Bruno

Mark Olbert
San Carlos

Eric Rodriguez
San Mateo

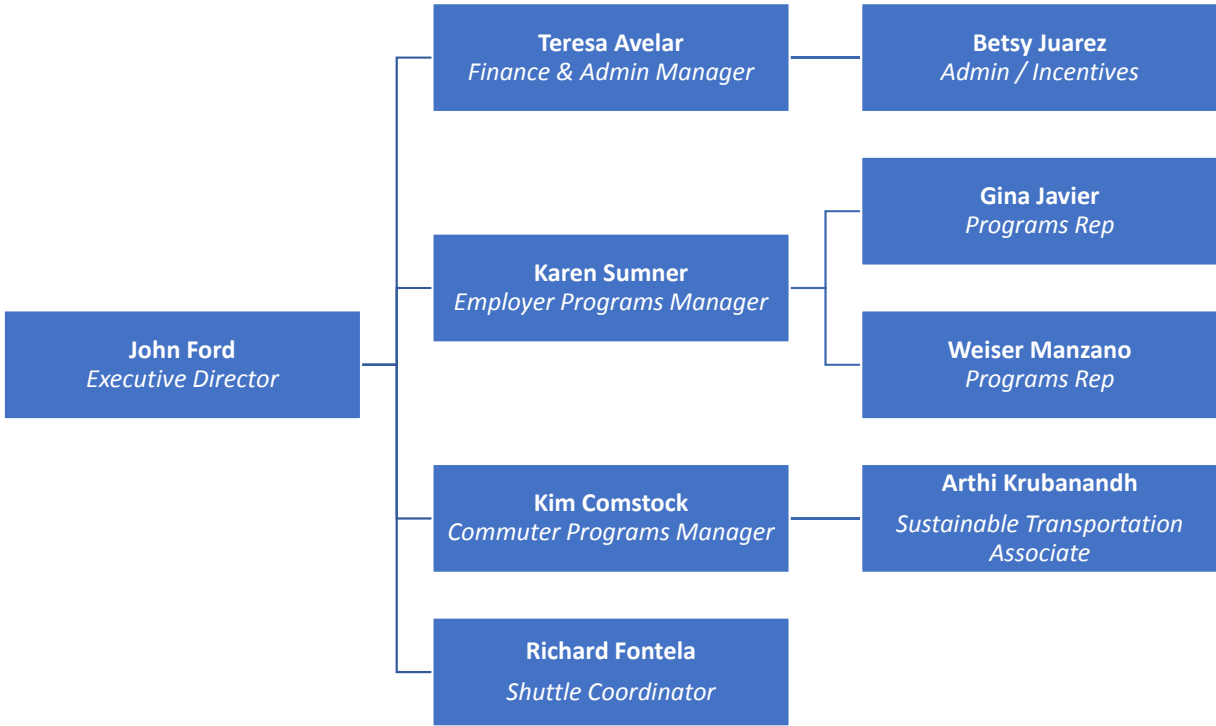
Richard Garbarino
South San Francisco

David Canepa
County of San Mateo

* Chair

** Vice Chair

Roster as of 3/2018



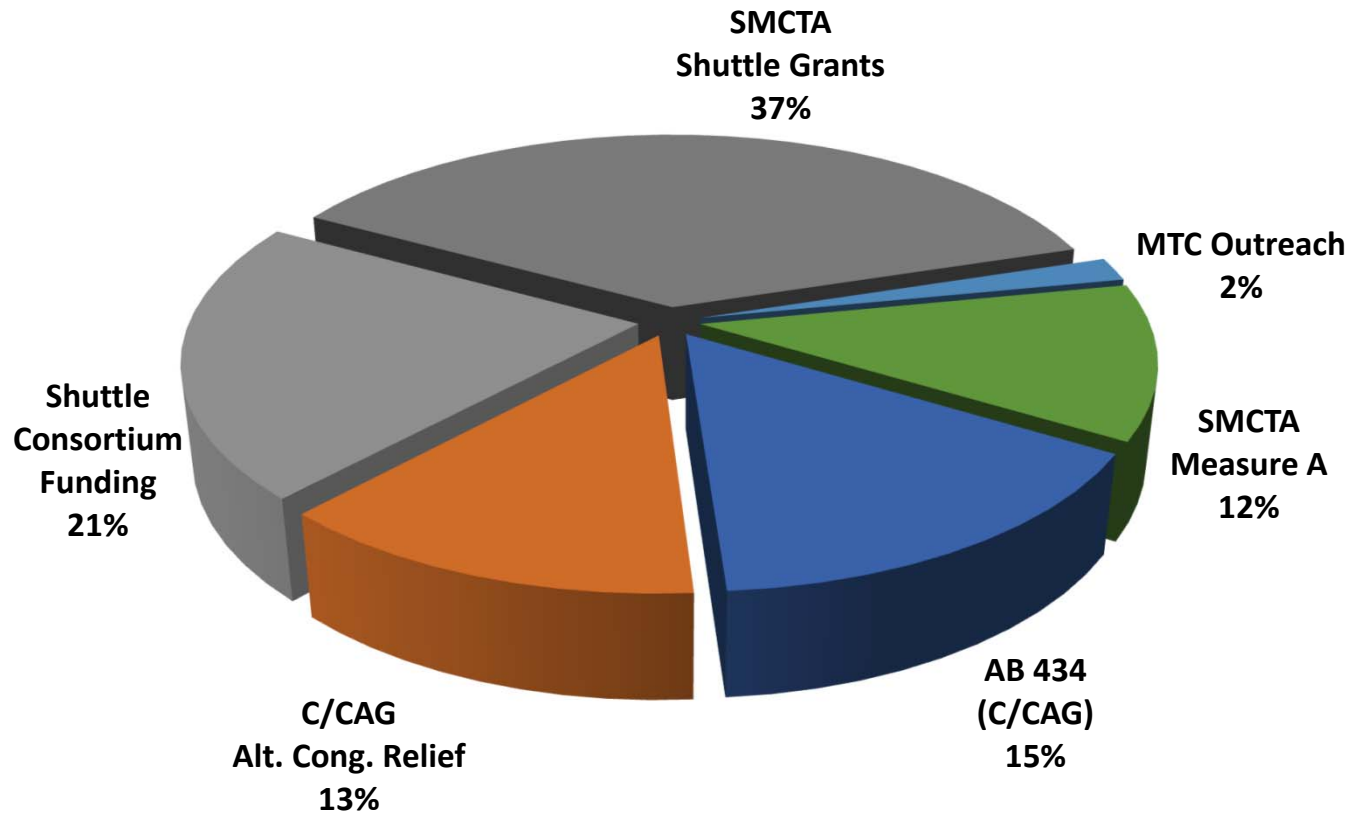
FY 2017-2018 *Program Areas*

- Employer Outreach & Support
- Commuter Programs
- First/Last Mile Shuttle Program
- Public/Private Partnerships

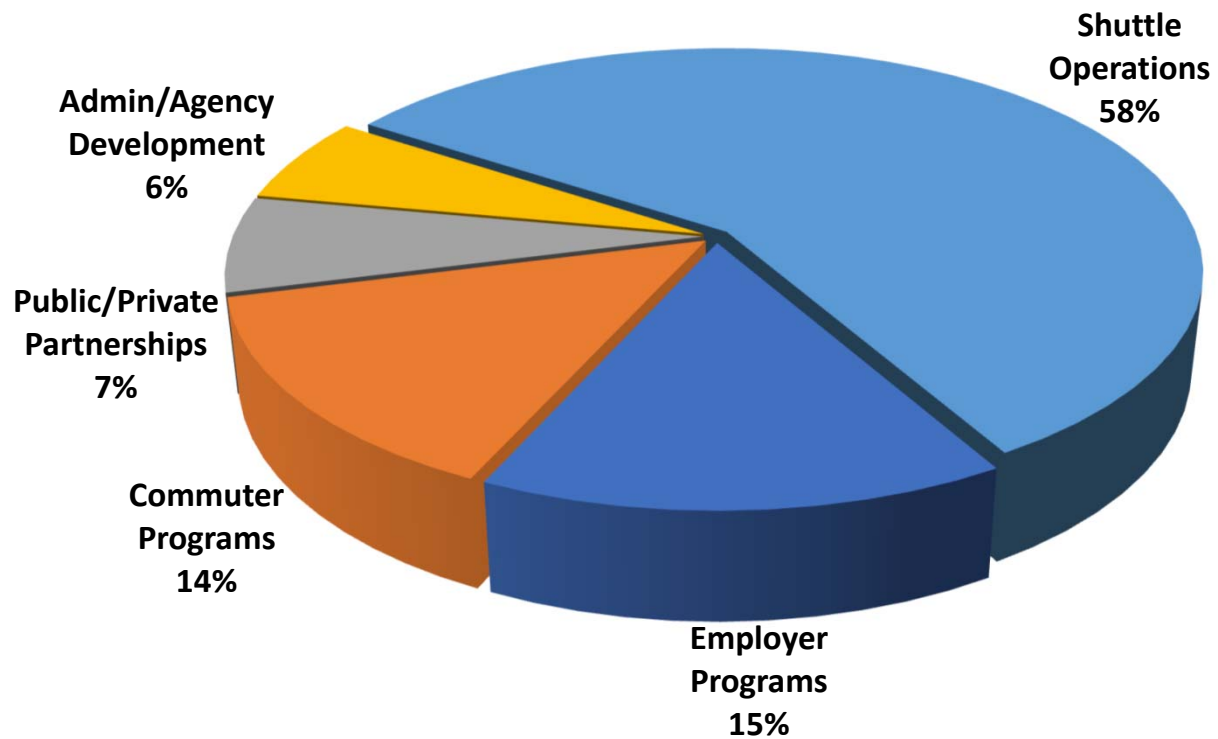
The logo for Commute.org is centered within a white circle that overlaps a dark blue vertical bar on the right side of the slide. The text "Commute.org" is written in a blue, sans-serif font and is enclosed in a thin yellow rectangular border.

Commute.org

Budget FY 2017-2018 – Revenue (\$3.93M)



Budget FY 2017-2018 – Expenses (\$3.99M)

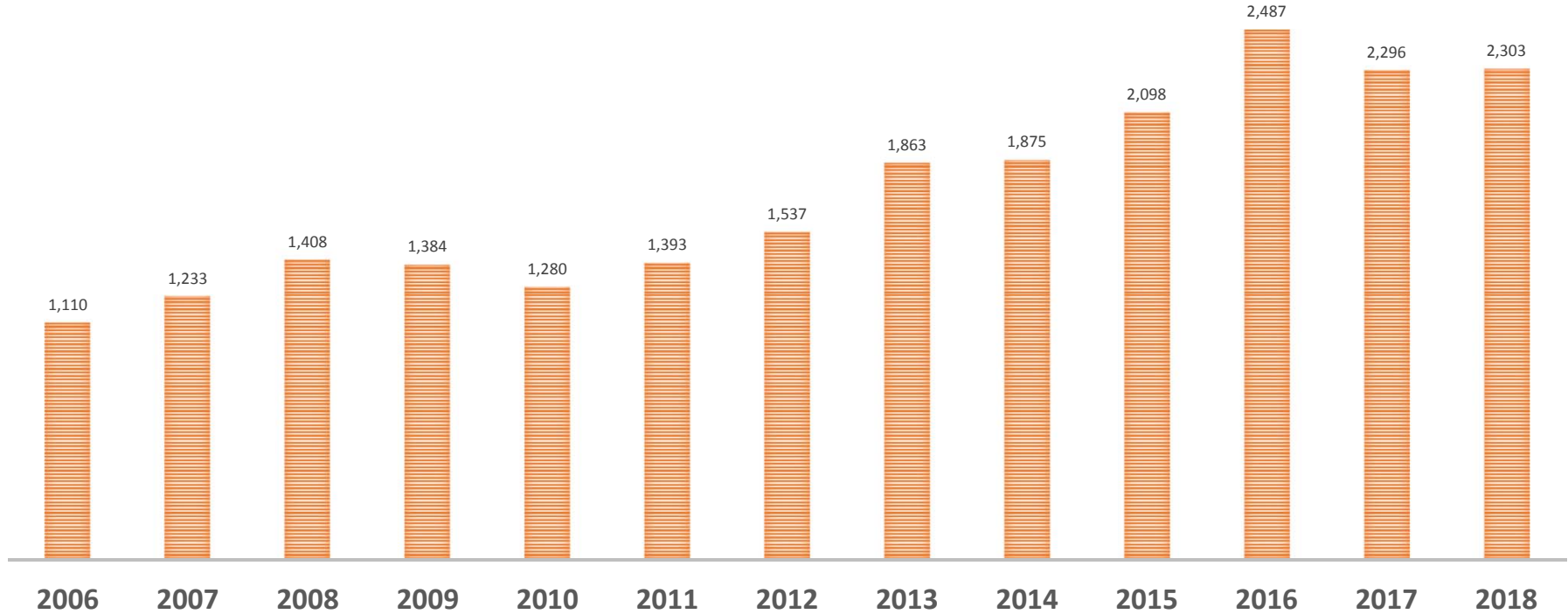


Commute.org *Shuttle Program*

- Public/Private Partnership
 - TA funds 50-75%, Consortium funds balance
 - Competitive call for projects every two years
 - Property managers, developers, hospitals, employers, municipalities
- Cities/Routes/Ridership
 - Brisbane, Burlingame, Foster City, Redwood City, San Carlos, San Mateo, South San Francisco
 - 20 routes (currently)
 - 2,400 average daily riders

The logo for Commute.org, featuring the text "Commute.org" in a blue, sans-serif font, centered within a white circle that has a thin blue border. The circle is positioned on the right side of the slide, overlapping a dark blue vertical bar that runs down the right edge of the page.

AVERAGE DAILY SHUTTLE RIDERSHIP JANUARY 2006-2018





Get text
alerts for
this shuttle

Text **OPBAAlerts**
to 555888

Alerts sent to subscribers in the event of service changes, interruptions and emergencies.

Visit commute.org/alerts for details. Msg & data rates may apply.

Commute.org

STAR Platform (Commuter Programs)

- Platform launched in September 2016
 - Private networks for employers
 - MaaS pilot platform
- Extend functions/features in FY 2017-2018
 - Dynamic ridesharing integration
 - App-based trip logging
 - GRH program integration

The logo for Commute.org is displayed within a white circle. The text "Commute.org" is written in a blue, sans-serif font. The circle is positioned on the right side of the slide, overlapping a dark blue vertical bar that runs down the right edge of the page.

Commute.org

YOUR COMMUTE COUNTS.

A Start

B Destination

Let's Go!

STAR Platform
my.commute.org

STAR Impact Report



TELEWORKERS.... Join the February Challenge!



HOW TO PARTICIPATE?

- Sign up or login at my.commute.org
- Log your TELEWORK trip between February 1 and February 28, 2018.
(Contact support@my.commute.org with questions).
- Enter an **Exclusive Raffle** for a \$40 REI Gift Card
- Winner will be notified by March 9, 2018.



TELEWORK REDUCES CARBON EMISSIONS. THANKS FOR BEING A GREEN COMMUTER!

Telework is a work arrangement that allows an employee to perform work, during any part of regular, paid hours, at an approved alternative worksite (e.g., home, telework center).

Your Commute Counts at my.commute.org



[/COMMUTE.ORG](https://www.facebook.com/commute.org)



[@SMCOUNTYCOMMUTE](https://twitter.com/SMCOUNTYCOMMUTE)



[SMCOUNTYCOMMUTE](https://www.instagram.com/SMCOUNTYCOMMUTE)

S T ★ R

MY.COMMUTE.ORG

REWARDS FROM THE Star Store on my.commute.org

COMPLETE THESE STEPS AT MY.COMMUTE.ORG

1. Log your Commute Alternative Trips
(Except Drive Alone)
2. Add a Mailing Address to your Profile
(Contact support@commute.org with questions)
3. Go to Incentives > Point Programs
4. Redeem Your Prize in the Star Store

2018 Rewards





CITYChallenge 2017





Programs connected for commuters – Automatic Trip logging now available

Connected Apps

You can connect your account to external services which can automatically log your trips and more!



Commute Tracker by rideamigos

Automatically log your trips by connecting your account to the Commute Tracker by RideAmigos.

✔ You are currently connected ✖ Disconnect / Generate New Connect Pin



SCOOP

Connect your account to SCOOP to automatically log carpools.

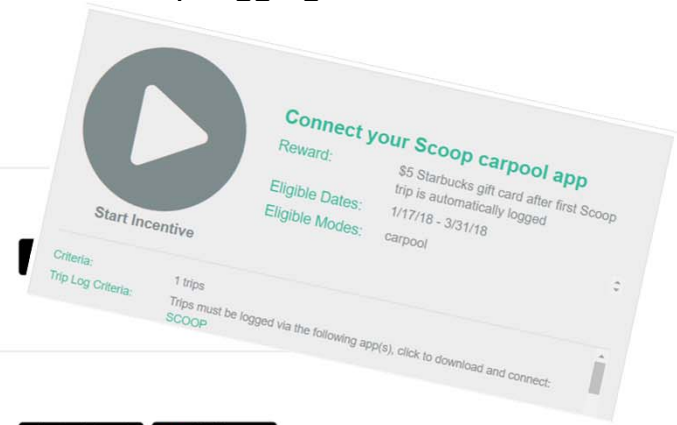
🔗 Connect



Strava

Connect your account to Strava to automatically log trips to and from work. [More info?](#)

🔗 Connect



2018 Commuter Challenge



- 2-month challenge to use and track non-SOV trips
- Weekly & Grand Prizes
- Focus on CO2 reduction

Commute.org

GUARANTEED

RIDE  **HOME**

C O M M U T E . O R G



BAY AREA

**BIKE TO
WORK DAY**

MAY 10, 2018

10:00 AM to 1:00 PM

Thursday, March 15, 2018

Genesis, 1 Tower Place
South San Francisco



COMMUTER *Land*

LUNCH WILL BE PROVIDED

How the Best Workplaces for
Commuters Are the Happiest
Places on the Peninsula

Commute.org

Discussion

John Ford

Executive Director

PH: 650/588-8170

john@commute.org

Commuter.org



YouTube

