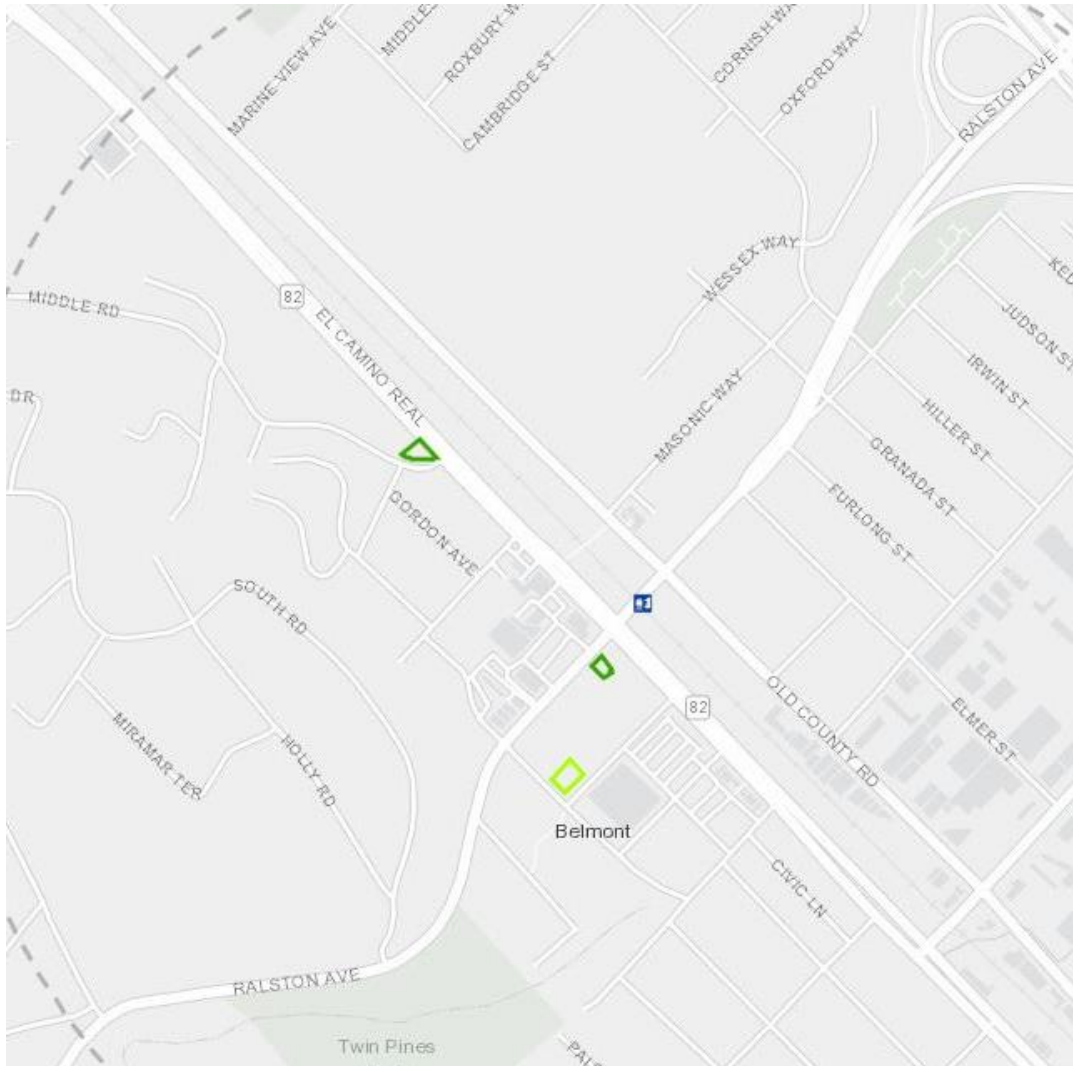


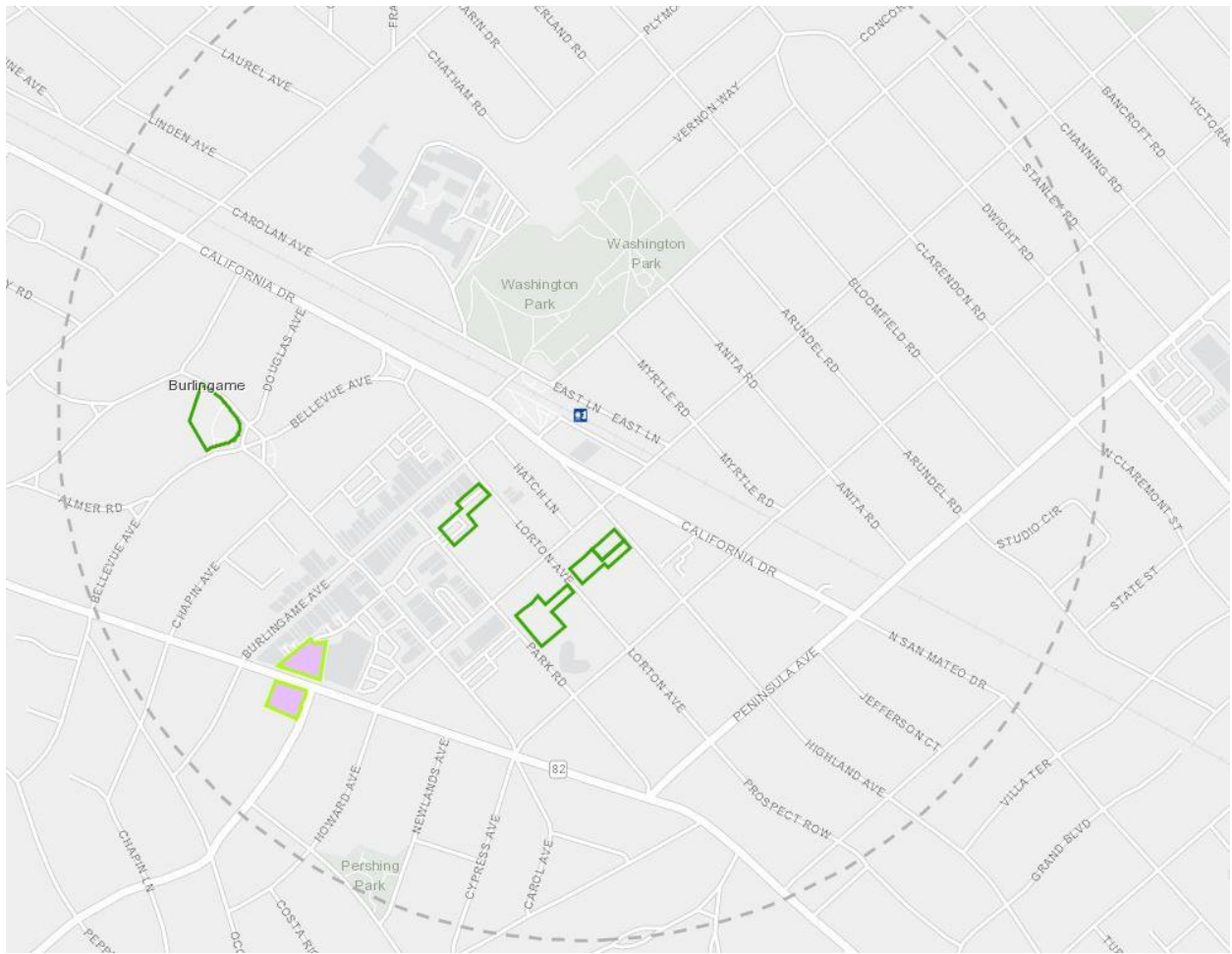
Viability Public Lands for Workforce Housing 2018 – San Mateo County



Belmont

- Viable Publicly Owned Parcels ...
- Surface Parking
- Underutilized Parcels
- Vacant
- Public Parcels Qualifying for Tax Credits ...
- AHSC Qualifying Parcels
- LIHTC Qualifying Parcels
- LIHTC and AHSC Qualifying Parcels

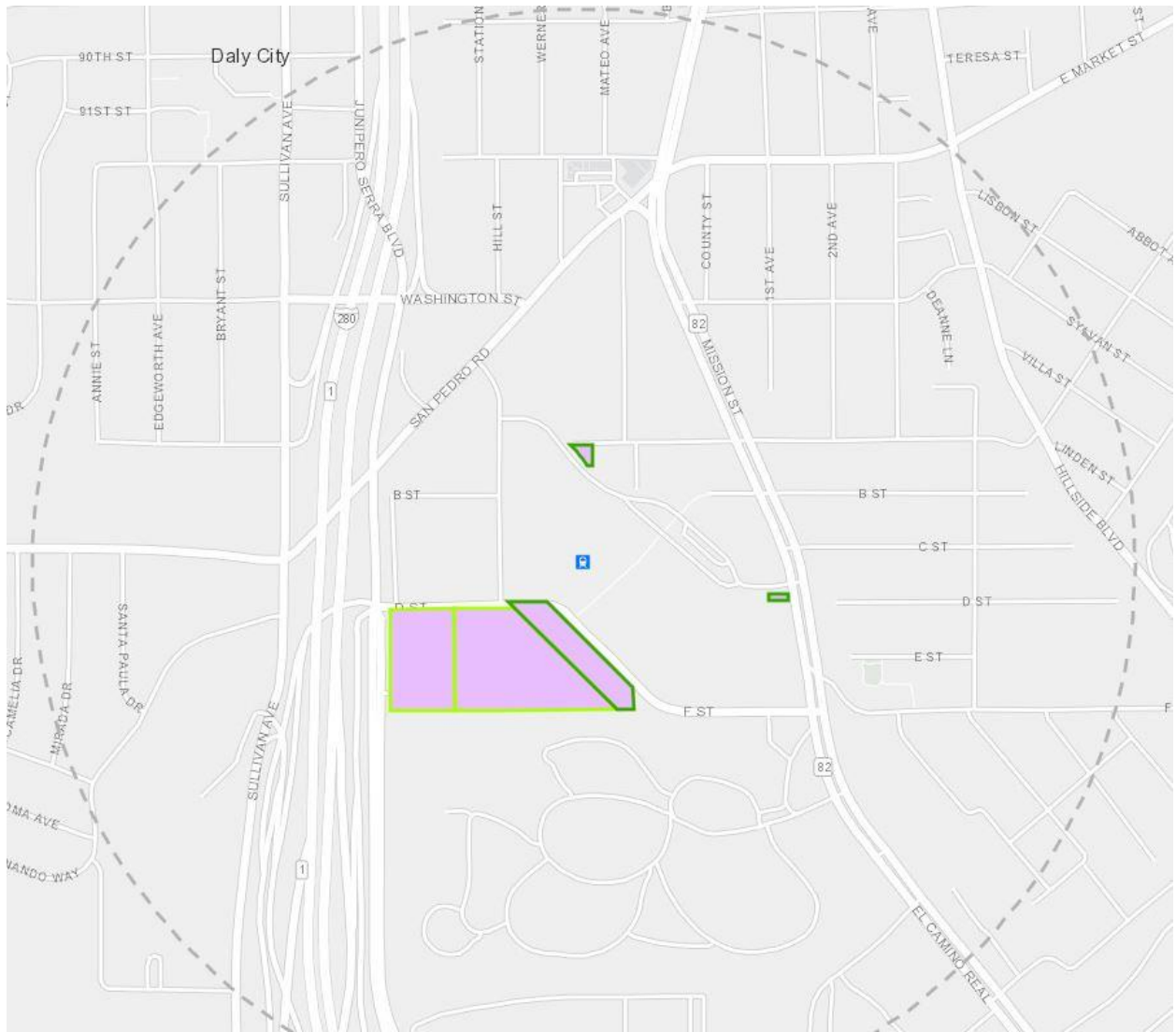
Source: MTC, Viable Public Lands for Workforce Housing 2018



Burlingame

- Viable Publicly Owned Parcels ...
- Surface Parking
- Underutilized Parcels
- Vacant
- Public Parcels Qualifying for Tax Credits ...
- AHSC Qualifying Parcels
- LIHTC Qualifying Parcels
- LIHTC and AHSC Qualifying Parcels

Source: MTC, Viable Public Lands for Workforce Housing 2018



Daly City

- Viable Publicly Owned Parcels ...
- Surface Parking
- Underutilized Parcels
- Vacant
- Public Parcels Qualifying for Tax Credits ...
- AHSC Qualifying Parcels
- LIHTC Qualifying Parcels
- LIHTC and AHSC Qualifying Parcels

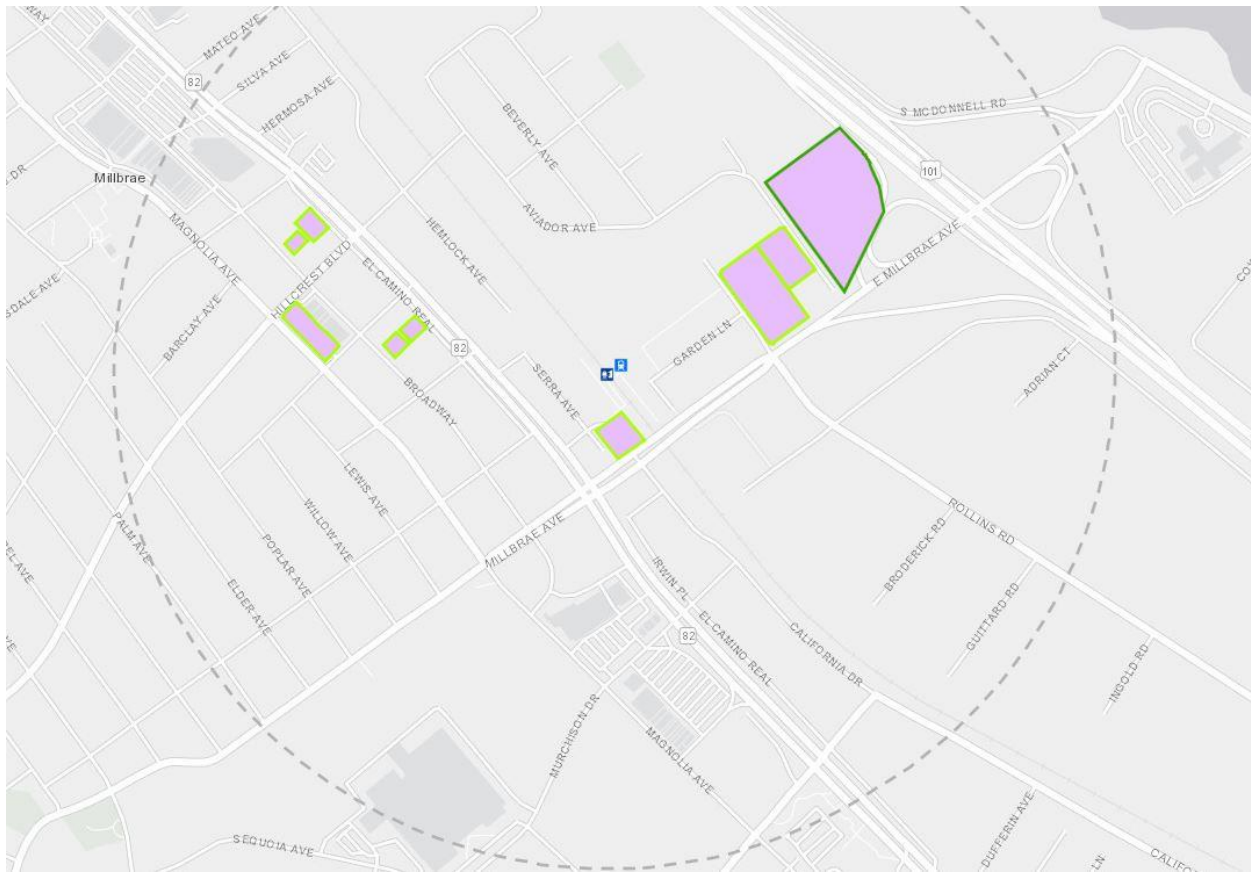
Source: MTC, Viable Public Lands for Workforce Housing 2018



Menlo Park

- Viable Publicly Owned Parcels ...
- Surface Parking
- Underutilized Parcels
- Vacant
- Public Parcels Qualifying for Tax Credits ...
- AHSC Qualifying Parcels
- LIHTC Qualifying Parcels
- LIHTC and AHSC Qualifying Parcels

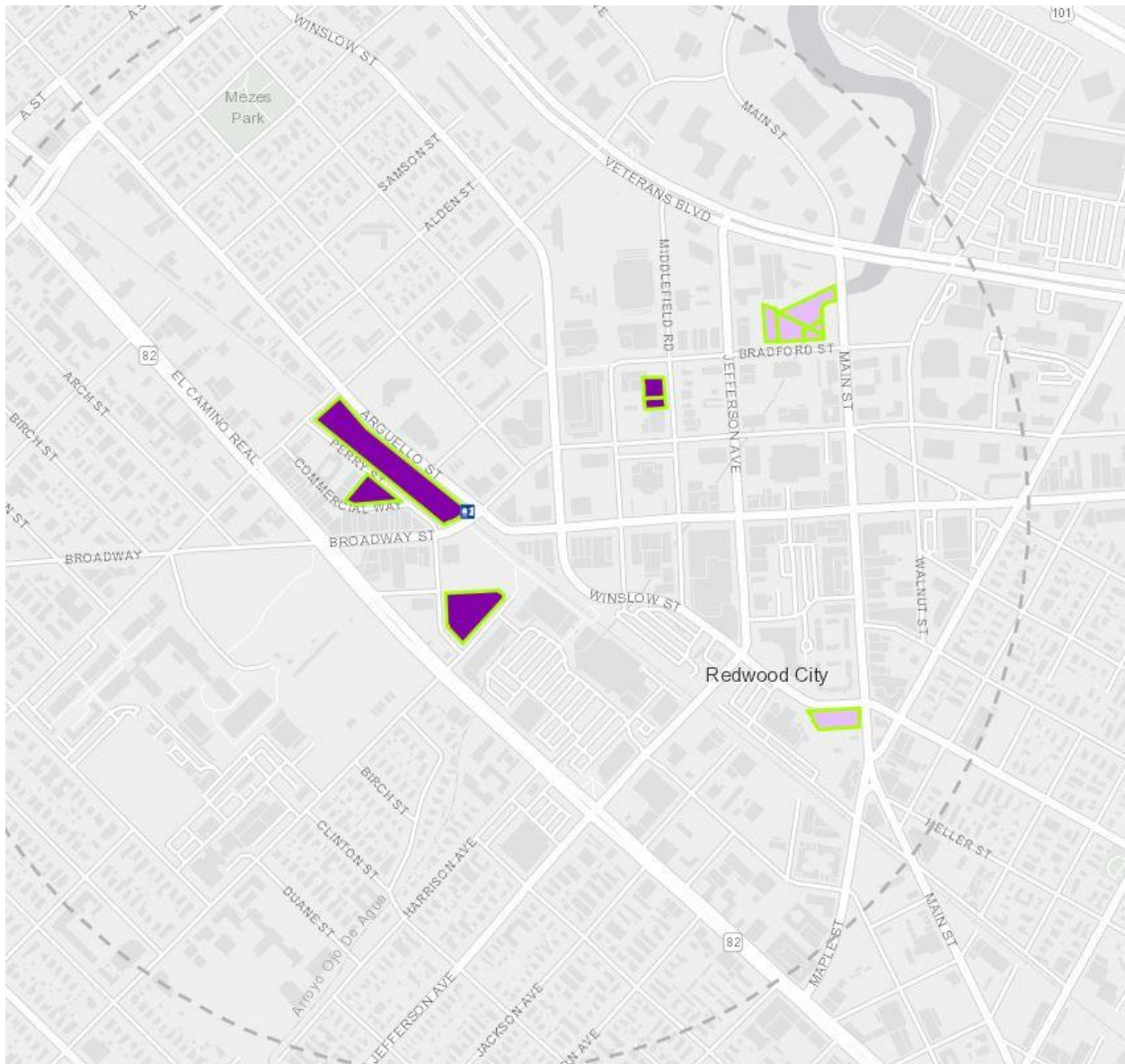
Source: MTC, Viable Public Lands for Workforce Housing 2018



Millbrae

- Viable Publicly Owned Parcels
 ...
- Surface Parking
- Underutilized Parcels
- Vacant
- Public Parcels Qualifying for Tax Credits
 ...
- AHSC Qualifying Parcels
- LIHTC Qualifying Parcels
- LIHTC and AHSC Qualifying Parcels

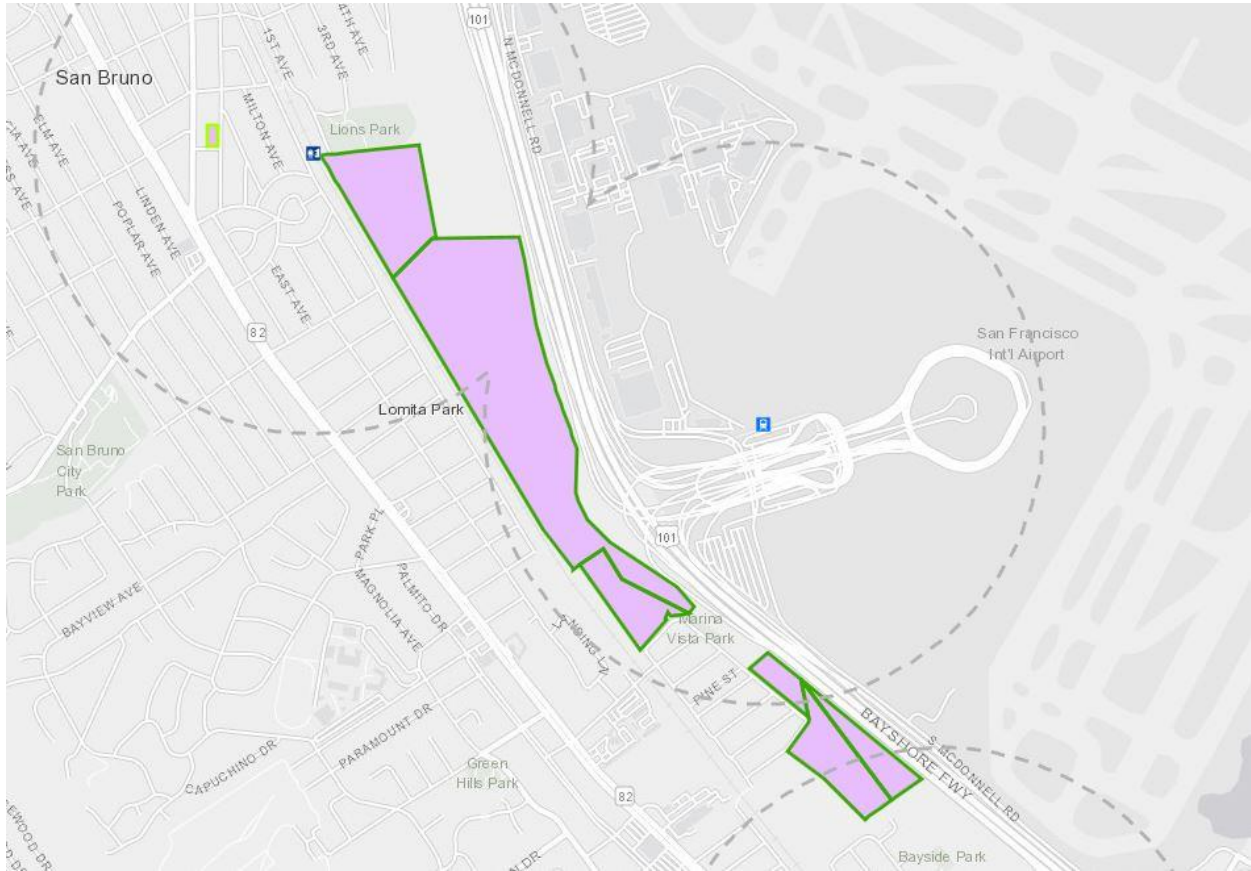
Source: MTC, Viable Public Lands for Workforce Housing 2018



Redwood City

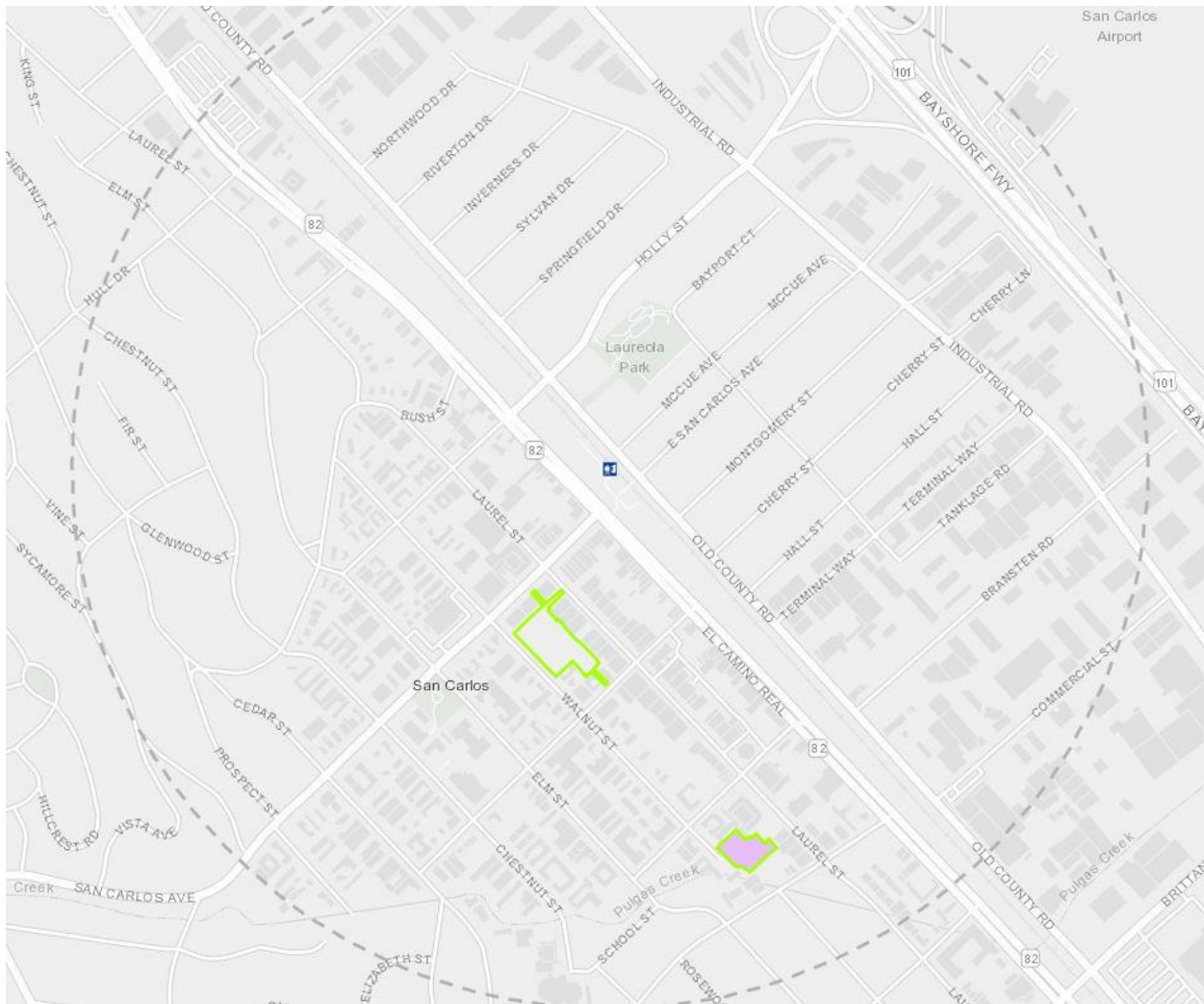
- Viable Publicly Owned Parcels ...
- Surface Parking
- Underutilized Parcels
- Vacant
- Public Parcels Qualifying for Tax Credits ...
- AHSC Qualifying Parcels
- LIHTC Qualifying Parcels
- LIHTC and AHSC Qualifying Parcels

Source: MTC, Viable Public Lands for Workforce Housing 2018



San Bruno – SFO

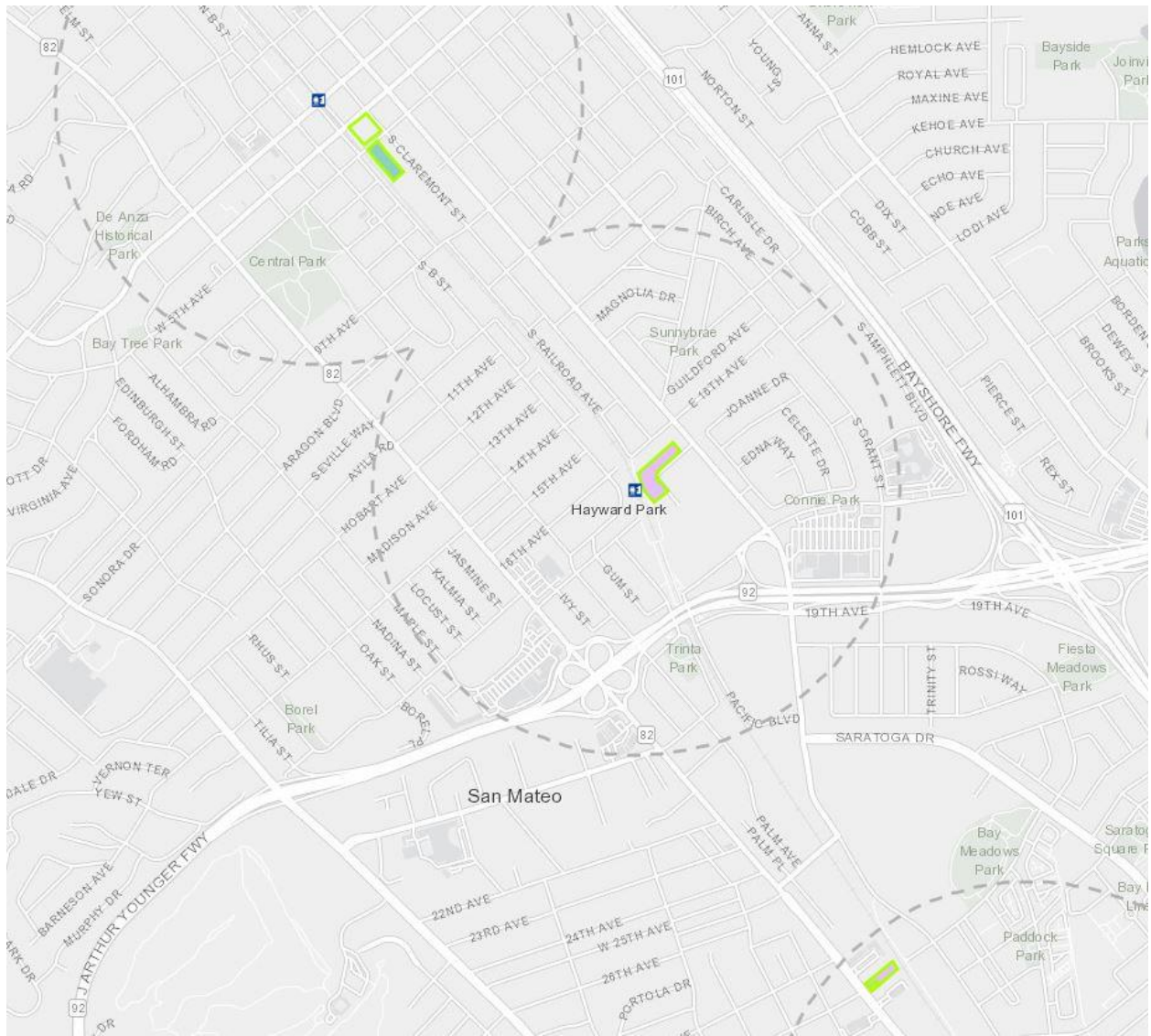
- Viable Publicly Owned Parcels
 ...
- Surface Parking
- Underutilized Parcels
- Vacant
- Public Parcels Qualifying for Tax Credits
 ...
- AHSC Qualifying Parcels
- LIHTC Qualifying Parcels
- LIHTC and AHSC Qualifying Parcels



San Carlos

- Viable Publicly Owned Parcels
 ...
- Surface Parking
- Underutilized Parcels
- Vacant
- Public Parcels Qualifying for Tax Credits
 ...
- AHSC Qualifying Parcels
- LIHTC Qualifying Parcels
- LIHTC and AHSC Qualifying Parcels

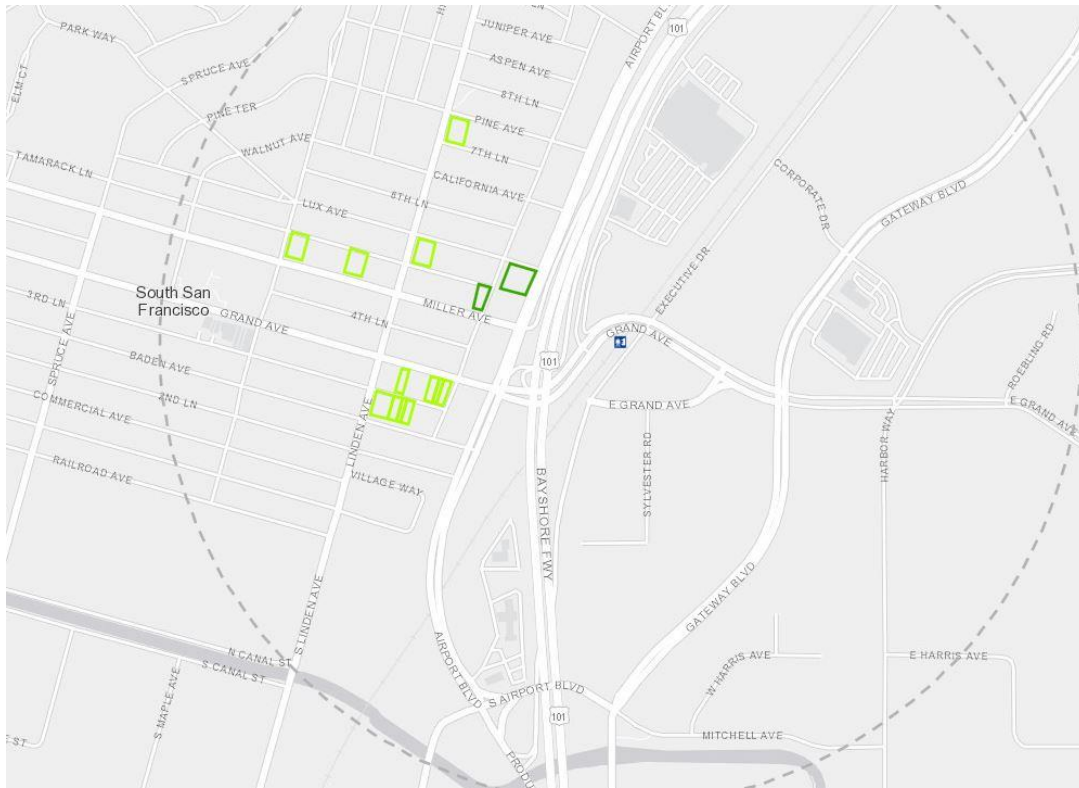
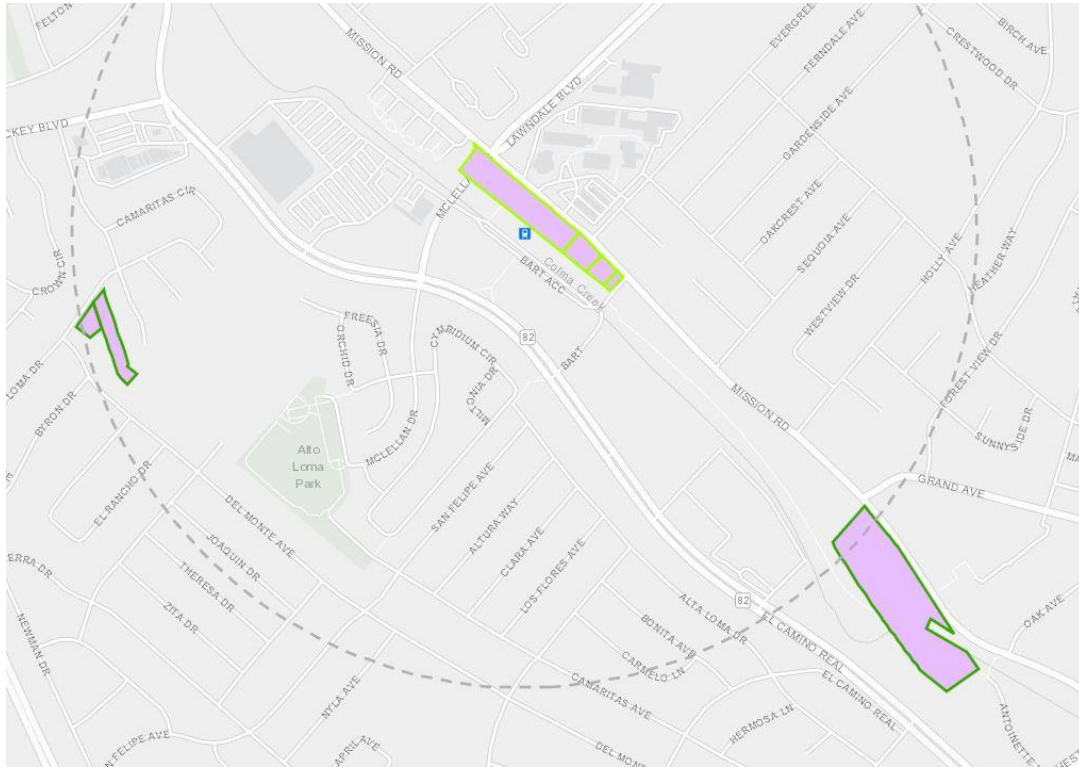
Source: MTC, Viable Public Lands for Workforce Housing 2018



San Mateo (City)

- Viable Publicly Owned Parcels ...
- Surface Parking
- Underutilized Parcels
- Vacant
- Public Parcels Qualifying for Tax Credits ...
- AHSC Qualifying Parcels
- LIHTC Qualifying Parcels
- LIHTC and AHSC Qualifying Parcels

Source: MTC, Viable Public Lands for Workforce Housing 2018



South San Francisco

Source: MTC, Viable Public Lands for Workforce Housing 2018

