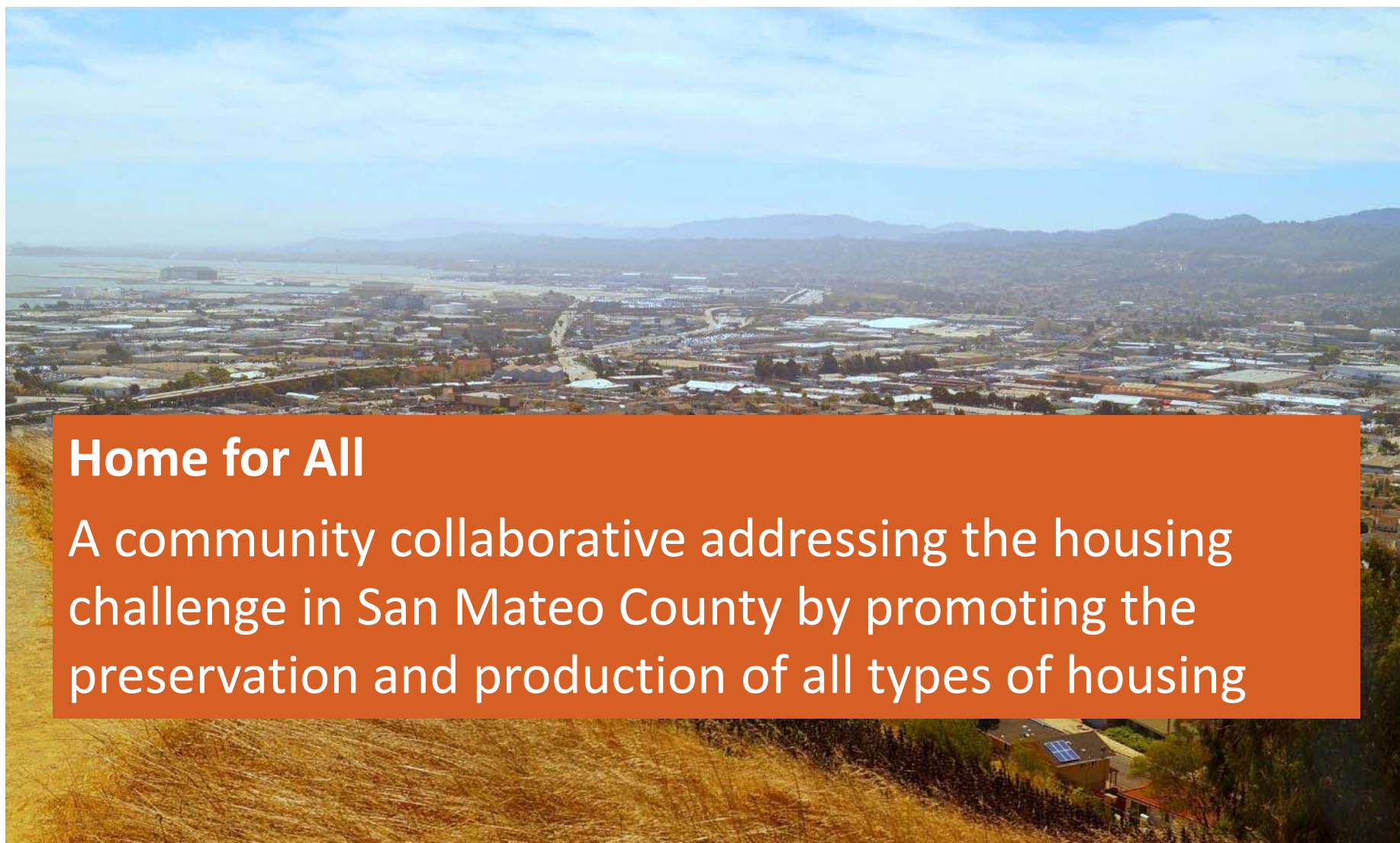




HOME FOR ALL

SAN MATEO COUNTY

C/CAG Legislative Committee
February 14, 2019



Home for All

A community collaborative addressing the housing challenge in San Mateo County by promoting the preservation and production of all types of housing

An aerial photograph of a city and its surrounding landscape. The foreground shows a hillside with dry, golden-brown grass. In the middle ground, a dense urban area is visible, including a large stadium-like structure and various industrial or commercial buildings. The background features rolling hills and a body of water under a blue sky with light clouds. An orange rectangular box is overlaid on the lower-left portion of the image, containing white text.

Goals

- Close the 24:1 Jobs/Housing Gap
- Add 16,500 new housing units of varying levels of affordability between 2014 and 2022



Home for All Approach





2018-19 Work Plan



EDUCATE

- Increase public awareness
- Presentations and workshops



CONVENE

- Facilitate leadership convenings
- Experiment with new community engagement avenues
- Share best practices



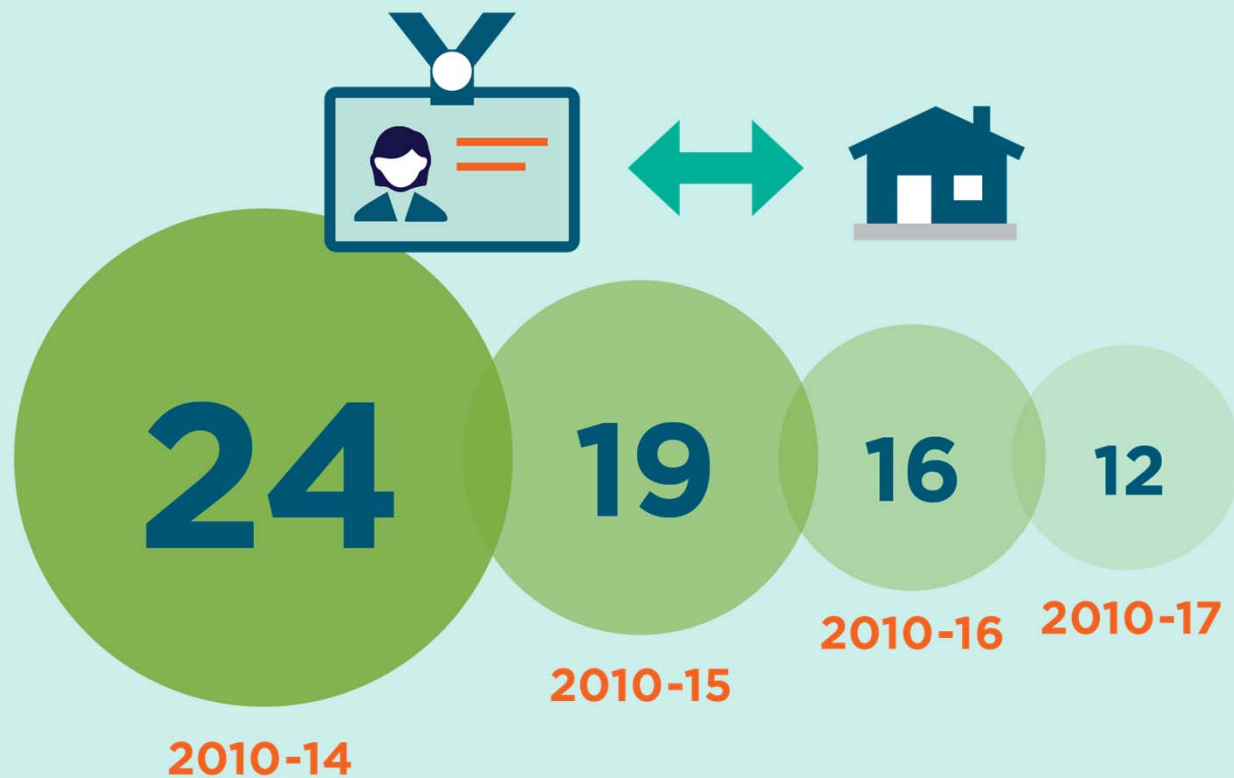
INNOVATE

- Promote housing friendly policy development
- Encourage Employee Housing models
- Identify underutilized sites
- Implement creative funding solutions and finance second units
- Publish information on housing and mobility

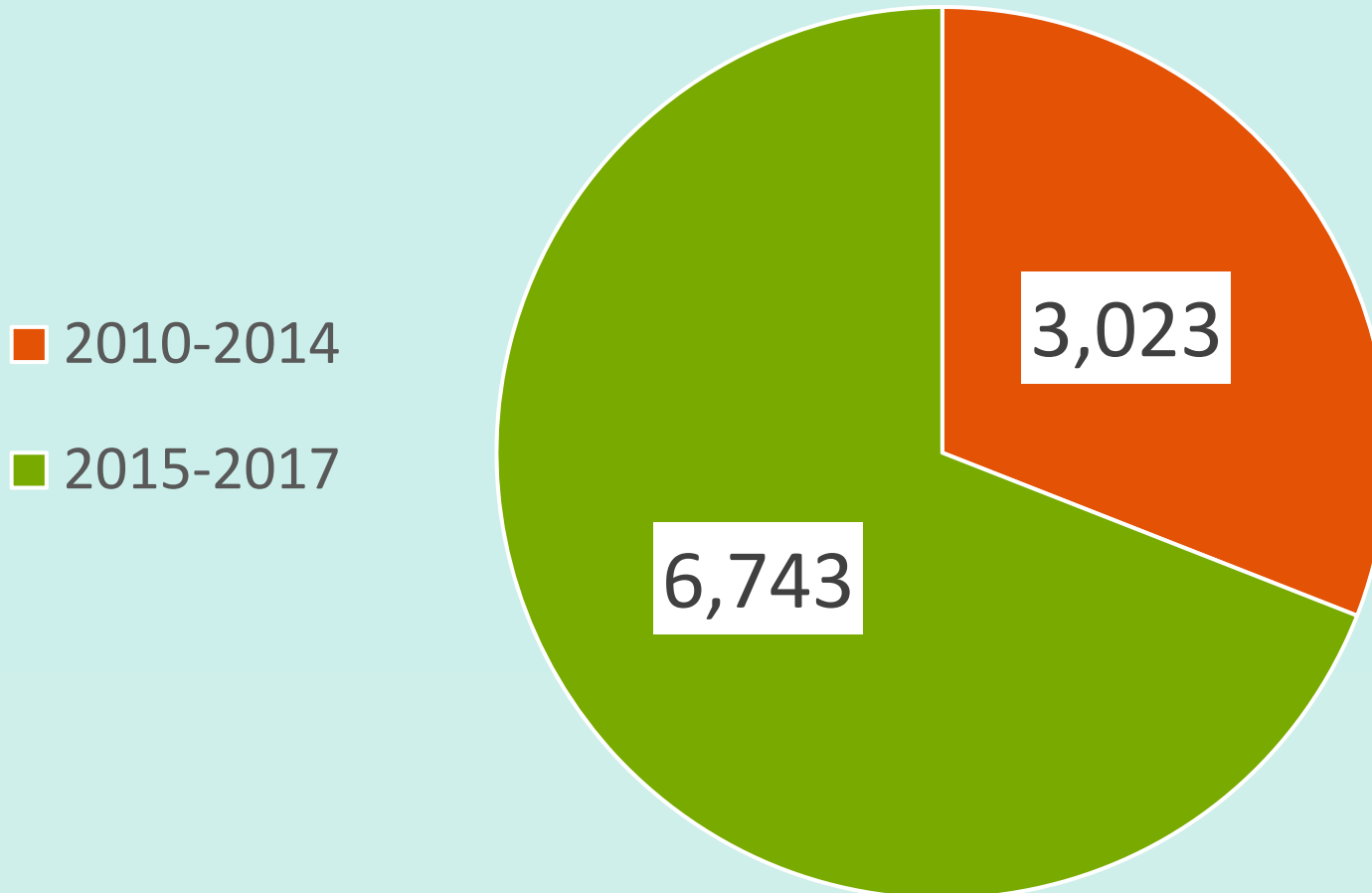


Home for All Progress

DECREASING JOBS/HOUSING RATIO



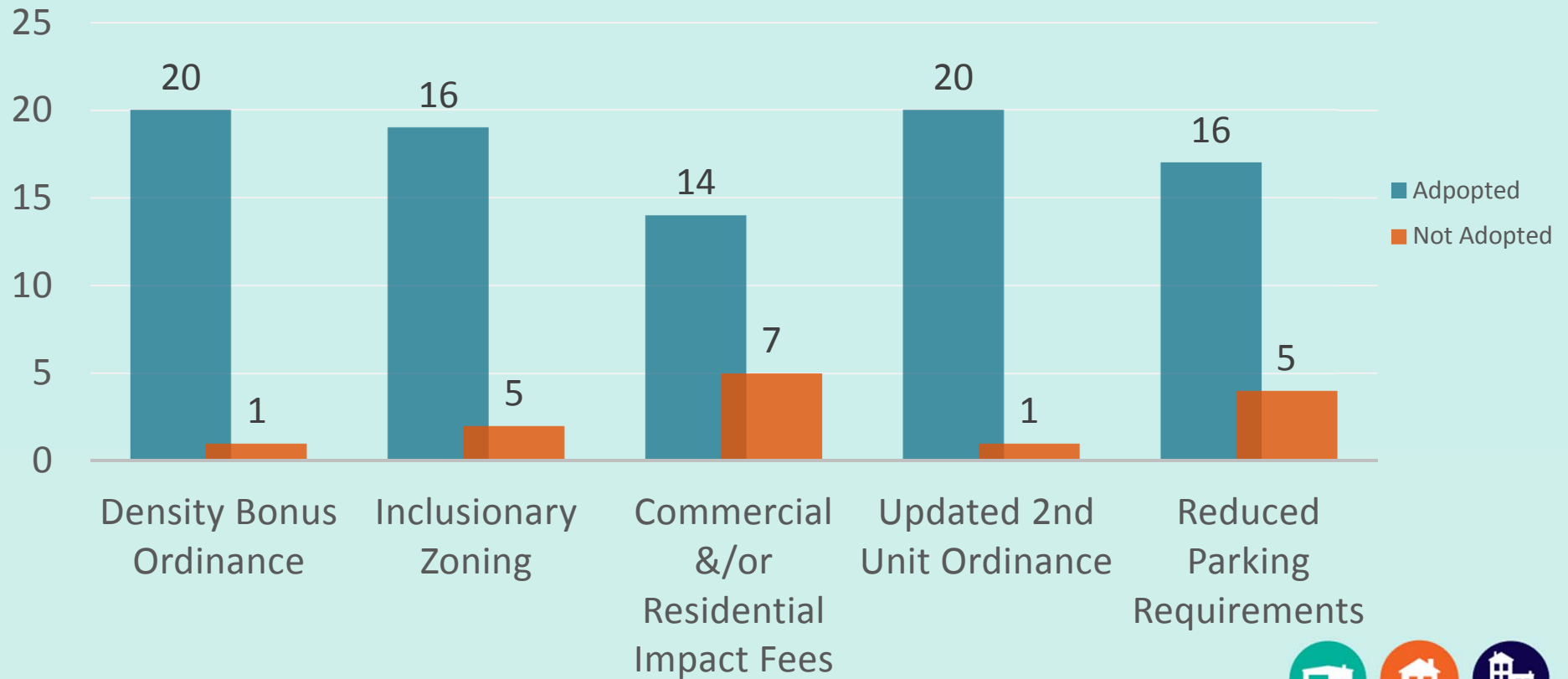
9,766 Building Permits





Housing Policies and Programs

Cities/Towns/County adopted ordinances and policies:
August 2018





Affordable Housing Fund 2012 -19

\$110.4 Million

2,055

New Affordable Units

584

Preserved/Renovated
Units

5,540

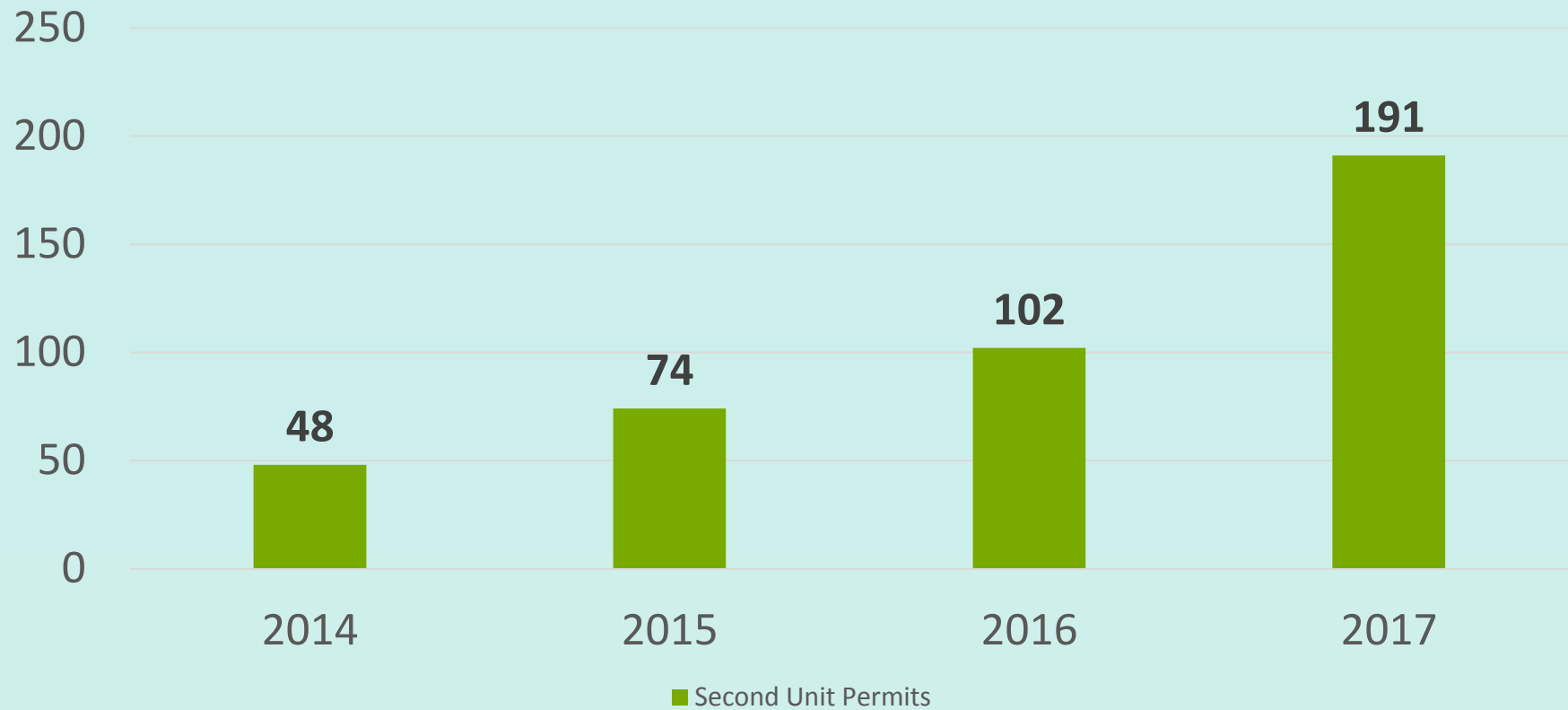
Residents





Second Unit Permits

2014 to 2017





Community Conversations



SAVE THE DATE

Saturday, April 28
10 - 12 PM

MASONIC LODGE
145 PARK ROAD, BURLINGAME

Doors open at 9:30 AM for breakfast.



Join this community conversation about the future of housing in Burlingame. What mix of housing will help our community thrive?

Please RSVP at
burlingamehousing.eventbrite.com
or call (650) 558-7216



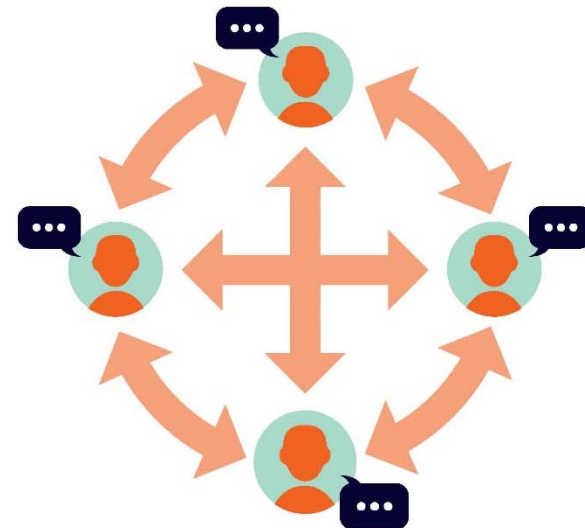
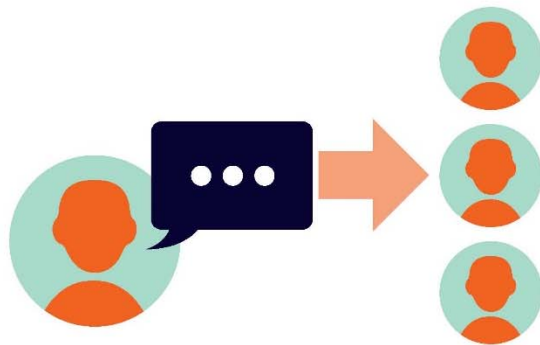
Community Conversations

Community Engagement Models

Traditional

VS.

New





Community Partnerships

- Workforce housing for teachers and classified employees
- Planning Commissioner Trainings
- RHNA Sharing Credit Legislation
- Housing – Transportation Messaging Research





Resources

Home for All Website

- Toolkits
 - Housing Toolkit
 - Housing – Mobility Toolkit
- Local Legislative Policy Tracker
- GIS Maps:
 - Commercial Development
 - Affordable Housing

Second Unit Resources

- Second Unit Idea Book
- Second Unit Workbook
- Second Unit Resource Center Website
 - Homeowner and Tenant Testimonials
 - Cost Calculator
 - Design//Construction/ Occupancy Process and Timeline





Upcoming Events

- **February 7th** – Superintendents Meeting
- **February 28th** – Learning Network Meeting
- **March 2019** – Community Engagement meetings in Brisbane, San Mateo and Pacifica
- **March 28th** – Home for All Convening: *How to Talk About Housing: Strategies for Productive Public Conversations*
- **May 23rd** – Home for All Convening: Housing and Transportation
- **Summer 2019** – Community Engagement meetings in Foster City and Hillsborough





Learn and Follow:

- www.HomeforAllSMC.com
- www.SecondUnitCenterSMC.org
- @HomeforAllSMC

