

# SM 101 EXPRESS LANES PROJECT



---

San Mateo County Express Lanes Joint Powers Authority Board of Directors Meeting  
November 8, 2019

---



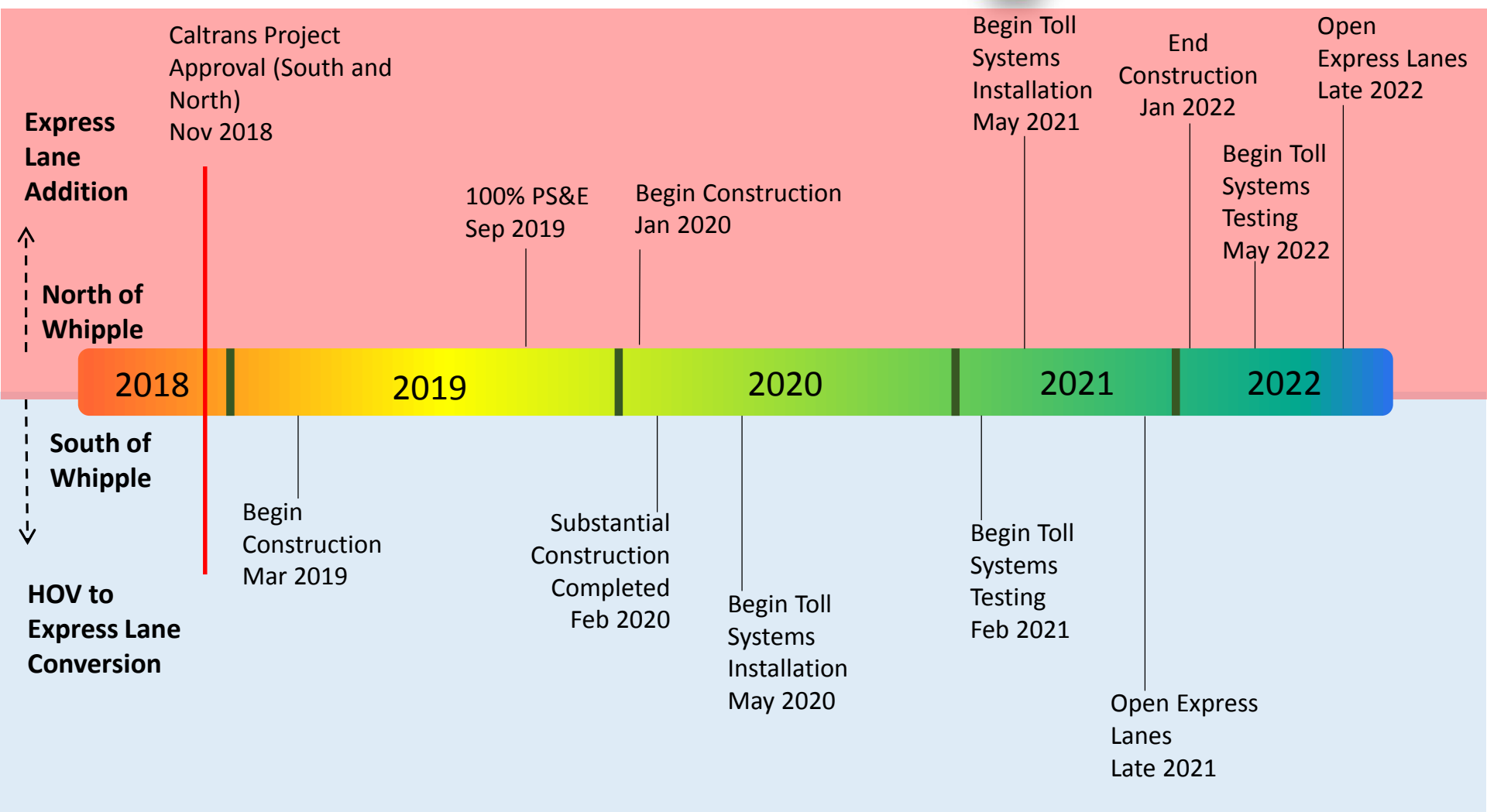
- Project Progress
- Construction Interface with Local Communities
- Traffic impacts
- Public Outreach Plan
- Cost Update



- **Project Progress**
- Construction Interface with Local Communities
- Traffic impacts
- Public Outreach Plan
- Cost Update

# SM 101 EXPRESS LANES PROJECT

## PROJECT UPDATES





- **South of Whipple:**

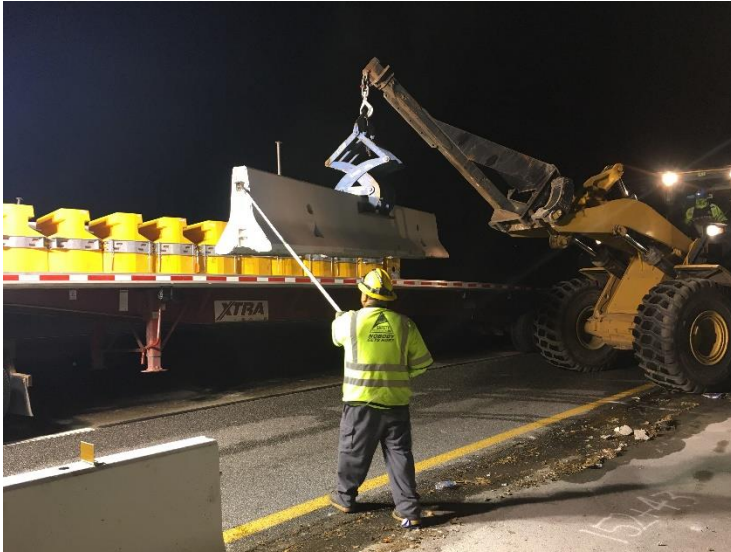
- HOV to Express Lane conversion construction began March 2019
- Substantial civil construction completion anticipated February 2020
- Toll System 65% design is underway

- **North of Whipple:**

- 100% Design Plans for new lanes completed September 30<sup>th</sup>
- Construction targeted to begin in early January
- Toll System design will begin in February



# SM 101 EXPRESS LANES PROJECT CONSTRUCTION ACTIVITIES



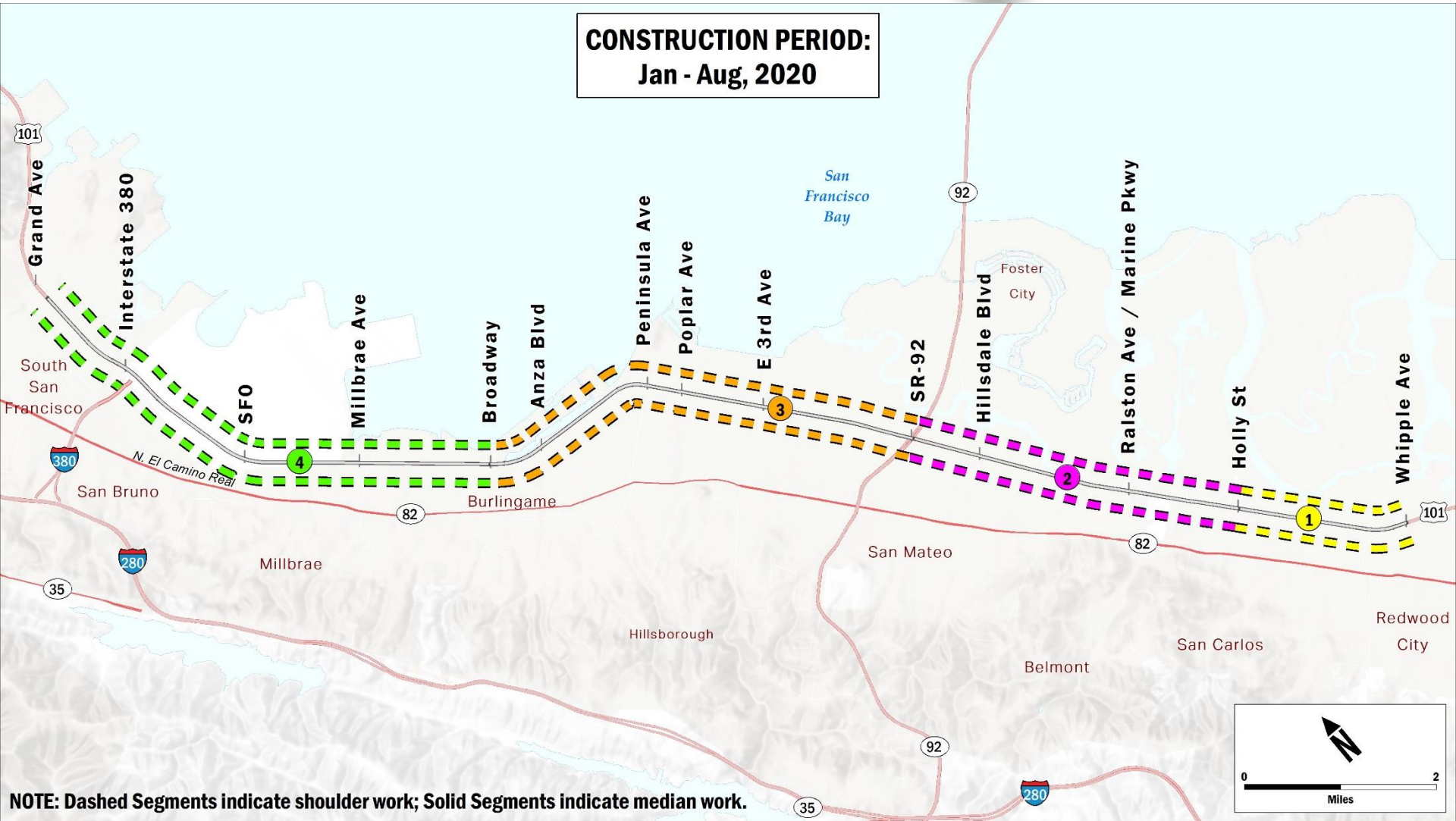


- Project Progress
- **Construction Interface with Local Communities**
- Traffic impacts
- Public Outreach Plan
- Cost Update

# SM 101 EXPRESS LANES PROJECT STAGE 1 – OUTSIDE WIDENING



**CONSTRUCTION PERIOD:  
Jan - Aug, 2020**



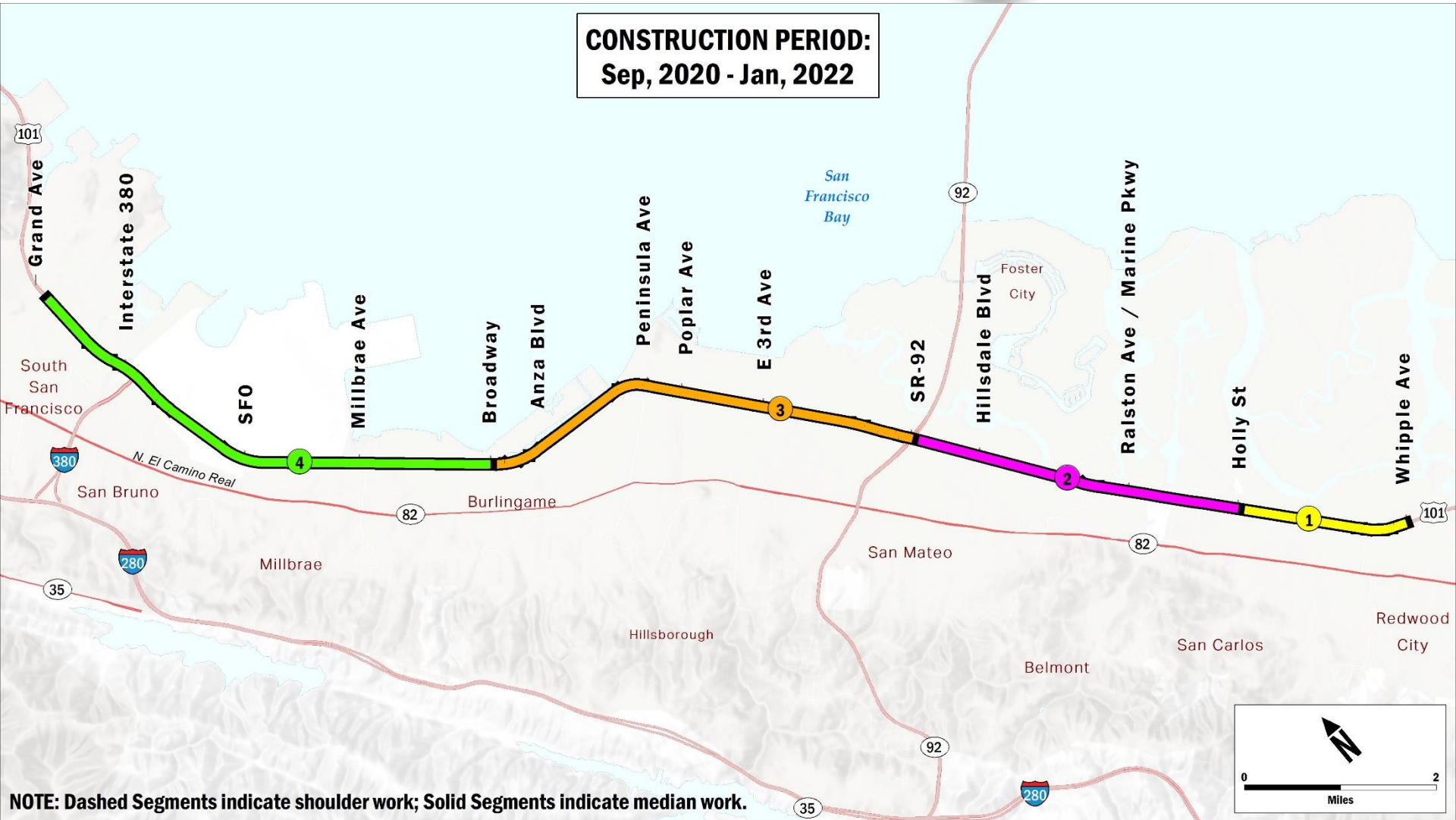
**NOTE: Dashed Segments indicate shoulder work; Solid Segments indicate median work.**



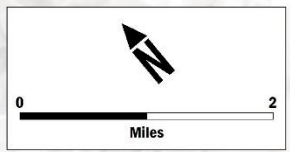
# SM 101 EXPRESS LANES PROJECT STAGE 2 – MEDIAN & PAVING WORK



**CONSTRUCTION PERIOD:  
Sep, 2020 - Jan, 2022**



**NOTE: Dashed Segments indicate shoulder work; Solid Segments indicate median work.**



# SM 101 EXPRESS LANES PROJECT NORTHERN SEGMENT CONSTRUCTION



## Cities:

- Redwood City
- San Carlos
- Belmont
- Foster City
- San Mateo
- Burlingame
- Hillsborough
- Millbrae
- San Bruno
- South San Francisco

## Minor Work in:

- East Palo Alto
- Menlo Park
- Palo Alto

## Noticeable Construction Activities:


- Sound wall removal/reconstruction
- Sewer line relocation
- Vegetation removal
- Replacement planting
- PG&E and AT&T service work
- Creating a soil berm from excavated soils containing Aerially Deposited Lead (ADL) in State's ROW
- Constructing additional lanes
- Replacing existing auxiliary lanes



# SM 101 EXPRESS LANES PROJECT

## TREE REMOVAL NEAR HILLSDALE RESIDENCES



 Tree  
Removal Location

City of San Mateo



# SM 101 EXPRESS LANES PROJECT VEGETATION REMOVAL NEAR HOLLY



City of San Carlos



Vegetation  
Removal Location



- Project Progress
- Construction Interface with Local Communities
- **Traffic impacts**
- Public Outreach Plan
- Cost Update



# SM 101 EXPRESS LANES PROJECT IMPACTS TO MOTORISTS



## Cities:

- Redwood City
- San Carlos
- Belmont
- Foster City
- San Mateo
- Burlingame
- Hillsborough
- Millbrae
- San Bruno
- South San Francisco

## Minor Work in:

- East Palo Alto
- Menlo Park
- Palo Alto

## Roadway Closures:

- Nighttime freeway lane closures, starting as early as 9:00 p.m. and ending as late at 6:00 a.m.
- Temporary ramp closures
- Temporary local roadway lane closures
- Full freeway closures (2021)



## Criteria for Detour Development

- Have drivers pass intended ramp or turn so they “catch” the detour signing
- Use State Routes whenever possible
- Avoid use of residential streets
- Pick routes with greatest capacity (rights over lefts)
- Accommodate city staff input



- Project Progress
- Construction Interface with Local Communities
- Traffic impacts
- **Public Outreach Plan**
- Cost Update



- Survey to City Outreach contacts to verify appropriate Public Outreach contacts and level of outreach desired
- Quarterly “newsletter” distributed via email to Elected Officials, City Officials, etc.
- Focused information to cities to distribute as requested

# SM 101 EXPRESS LANES PROJECT

## PUBLIC OUTREACH PLAN - PUBLIC



- Weekly construction information, including ramp closure details, emailed to those signed up on the project email list and posted to website
- Community meeting(s) in San Mateo neighborhood with wall and sewer work
- Ramp closure notification on ramps posted two weeks in advance of closures



# SM 101 EXPRESS LANES PROJECT

## CONSTRUCTION UPDATE VIA E-MAIL



### SM 101 EXPRESS LANES PROJECT MONTHLY CONSTRUCTION UPDATE



Project construction is underway! Caltrans is constructing express lanes on U.S. 101 from I-380 in San Bruno to the San Mateo County/Santa Clara County border. Construction activities have begun in Palo Alto and will continue northward to South San Francisco. Construction is expected to occur between 2019 and 2022.

**STAY CONNECTED!** Caltrans has launched a new website with [enhanced digital accessibility](#). Check out the new [SM 101 Express Lanes Project Webpage](#).

#### Construction Update

During the month of August, construction activities will continue along US 101 from the San Mateo County/ Santa Clara County border to US 101/ Whipple Avenue and will include lane closures on the freeway, some freeway ramps, and some local City streets next to the freeway.

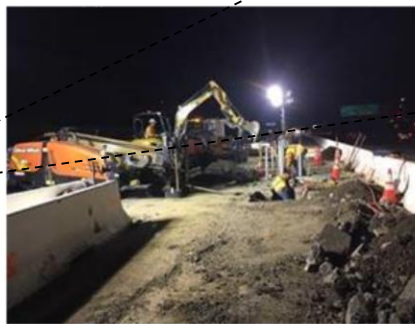
**Freeway Work:** Intermittent lane closures will continue on northbound and southbound US 101 from 10 p.m. to 5 a.m., excluding Friday and Saturday nights. During lane closures, at least one lane will remain open at all times.

Freeway work includes:

- installing freeway sign foundations
- demolishing portions of the existing median barrier
- installing new median barrier
- installing drainage systems

**Ramps:** Work on the freeway ramps will continue periodically for restriping and installing temporary traffic monitoring equipment. This work may require temporary, nightly ramp closures in Palo Alto and East Palo Alto. Ramp closures:

- will be displayed on changeable message signs



Construction crews boring in freeway median to prepare for electrical connections

**Ramps:** Work on the freeway ramps will continue periodically for restriping and installing temporary traffic monitoring equipment. This work may require temporary, nightly ramp closures in Palo Alto and East Palo Alto. Ramp closures:

- will be displayed on changeable message signs
- will take place at night
- will last 3 to 8 hours
- will reopen by 5 a.m. daily
- will have detour signs posted

Those interested can sign up for regular Construction Updates e-mails at the new **SM 101 Express Lanes Project Webpage!**

<https://dot.ca.gov/caltrans-near-me/district-4/d4-projects/d4-sm-101-express-lane-project>



- Project Progress
- Construction Interface with Local Communities
- Traffic impacts
- Public Outreach Plan
- **Cost Update**

# SM 101 EXPRESS LANES PROJECT

## ESTIMATE DEVELOPMENT



	Estimate Description
<b>2018</b>	
May	Full funding of \$514.3 secured
November	Project Report approved
November	Initial Toll System estimate
<b>2019</b>	
March	Toll System owner determination
June	Toll System estimate with BAIFA
November	Final construction cost estimate
<b>2020</b>	
May	Final So. Segment Toll System Cost estimate
August	Final No. Segment Toll System Cost estimate

# SM 101 EXPRESS LANES PROJECT

ORIGINAL BUDGET - CONTRACT FOCUSED



	Budget*	Added SHOPP	Revised Budget
Environmental, Design & ROW	\$ 64.5	\$ 0	\$ 64.5
South Civil Contract	\$ 74.8	\$ 0	\$ 74.8
North Civil Contract	\$ 343.6	\$ 33.1	\$ 376.7
Toll System Contract	\$ 26.6	\$ 0	\$ 26.6
Highway Planting	<u>\$ 4.8</u>	<u>\$ 0</u>	<u>\$ 4.8</u>
	\$ 514.3	\$ 33.1	\$ 547.4

in \$millions

\*Project Report estimate contingency was 12% Civil.

# SM 101 EXPRESS LANES PROJECT

## CURRENT COST ESTIMATE - CONTRACT FOCUSED



	in \$millions		
	<b>Budget</b>	<b>Estimate</b>	<b>Change</b>
Environmental, Design & ROW	\$ 64.5	\$ 64.5	\$ 0
South Civil Contract	\$ 74.8	\$ 74.8	\$ 0
North Civil Contract	\$ 376.7	\$ 388.7 *	\$ 12.0
Highway Planting	\$ 4.8	\$ 4.8	\$ 0
Toll System Contract	\$ 26.6	\$ 45.0 *	\$ 18.4
Toll System Early Opening	<u>\$ 0</u>	<u>\$ 3.1</u>	<u>\$ 3.1</u>
	\$ 547.4	\$ 580.9	\$ 33.5

\* This estimate includes contingencies of 8% Civil and 15% Toll System.



# SM 101 EXPRESS LANES PROJECT

## EXPLANATION FOR COST CHANGES



### North Civil Contract

<p>Risk Contingency</p>	<ul style="list-style-type: none"> <li>• Additional contingency to address price risk. All other adds have been offset by Value Engineering, the SHOPP add, and negotiations. <span style="float: right;">\$12M</span></li> </ul>
-------------------------	---

### Toll System Contract – breakdown of additional \$18.4M

<p>Changes from initial estimate</p>	<ul style="list-style-type: none"> <li>• Cost estimate was a mileage comparison cost based upon other Bay Area express lanes.</li> <li>• <b>Now includes:</b> known quantities, higher labor costs, lessons learned from 880, and technology upgrades. <span style="float: right;">\$4.5M</span></li> </ul>
<p>Added costs</p>	<ul style="list-style-type: none"> <li>• In absence of the owner and operator, these costs were not quantified at the time of funding.</li> <li>• <b>Now includes:</b> 101 back office upgrades, before/after traffic studies, customer education, network communications design. <span style="float: right;">\$8.1M</span></li> </ul>
<p>Contingency</p>	<ul style="list-style-type: none"> <li>• Contingency to cover unforeseen increases with preliminary estimate. <span style="float: right;">\$5.8M</span></li> </ul>

# SM 101 EXPRESS LANES PROJECT

## LOAN AMOUNT



in \$millions

### Additional Project Costs

North contract risk contingency	\$ 12.0
Toll System contract	\$ 18.4
Southern Segment Opening	<u>\$ 3.1</u>
Subtotal of additional project costs	\$ 33.5

### Additional Corridor Costs

Holly I/C Project Conflict	\$ 1.3
Toll System O&M (1 <sup>st</sup> Year @ 33%)	<u>\$ 4.7</u>
Subtotal of additional corridor costs	\$ 6.0

### Total Loan Amount

**\$ 39.5**



## Questions?

Stay informed -  
sign up to receive construction updates by e-mail.

<https://dot.ca.gov/caltrans-near-me/district-4/d4-projects/d4-san-mateo-101-express-lane-project>