



SMC Recovery Initiative

Creating a Better Future through
Collaboration, Advancing Equity, and Inclusion

September 10, 2020

Recovery Initiative Organization



**Recovery
Coordination
Council**



**Public
Information
and Outreach
Group**

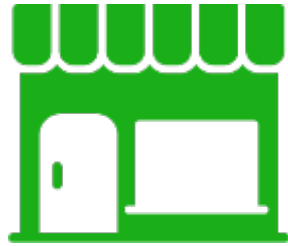


**Equity
Recovery
Group**

Recovery Initiative Committees



Public Health



**Economic
Recovery**



**Education and
Child Care**



**Vulnerable
Population
Support**



**Community
Infrastructure**

Effects of COVID-19 are Widespread

- Increased social, economic, and health disparities
- Children and families are challenged
- Increased unemployment and uncertainty of the future job market
- Local businesses are struggling

Recommendation Development

- Established equity framework
- Selected high priority focus areas
- Assessed the current environment
- Reviewed available data
- Identified challenges and needs
- Developed draft recommendations
- Equity Group and Committee review
- **Key stakeholder feedback**

Stakeholder Engagement

- Board of Supervisors
- City Managers
- State Delegation
- Local Elected Officials: Council of Cities, C/CAG
- Advocates, Faith Community
- Business Community: SAMCEDA, SVSMCCVB, Chambers
- Office of Education, School Boards, Community Colleges
- 4Cs and First Five
- CBOs: Thrive, Core Agencies, Second Harvest
- County Departments
- Equity Group review

Recovery
Coordinating Council
Meeting
September 18, 2020

Advancing Equity is Paramount



The effects of COVID-19 are amplifying inequities, but the recovery is an opportunity for a collective restart. To create an equitable community, systems, policies, and practices of oppression must be dismantled. Our new systems must eliminate disparities and provide access to quality services for all unserved, underserved, under-resourced, and ineffectively served individuals and families.



Decision Making and Solutions



Understanding Data



Burdens and Benefits



Accountability, Communication, and Community Engagement

Public Health

Slow the Spread

Promote community compliance with health directives

Slow the spread of COVID-19 particularly across communities of color and service and essential workers hardest-hit by the virus

Community Infrastructure



Technology & Connectivity

for all

Provide Wi-Fi access Countywide

Increase access to computers and hotspots for students, small businesses, job seekers, and the isolated

Expand tech training and support options

Leverage state and federal resources and legislative opportunities

Community Infrastructure

 Provide
Safe Transportation Options

Provide messaging for safe public transit use

Identify and implement active transportation quick build projects

Leverage state and federal resources and legislative opportunities

Supporting Vulnerable Populations

 Advance equity and support the county's
Most Vulnerable Populations

Provide financial and other assistance to ensure vulnerable residents remain housed

Provide support to “mom and pop” property owners

Ensure sufficient food and essential supplies are provided to those in need

Leverage state and federal resources and legislative opportunities

Supporting Vulnerable Populations

 Promote
Mental Health and Wellness

Utilize a variety of communication channels to provide information on mental health resources

Provide information to individuals whose condition has been exacerbated or who have been cut off from their support systems

Support community-based organizations providing mental health resources to low-income and underserved communities

Develop programs that provide a lifeline for isolated individuals

Leverage state and federal resources and legislative opportunities

Education and Child Care

 Provide
**Quality, safe, and affordable
child care**

Support child care providers to remain solvent and meet the needs of the community

Support families in obtaining child care

Leverage state and federal resources and legislative opportunities

 Support
**Distance learning and
out-of-school care**

Support out-of-school care providers

Support parents and children in virtual learning

Leverage state and federal resources and legislative opportunities

Economic Recovery

 Support
**Local Businesses and
Nonprofits**

Help slow the spread of COVID-19

Provide targeted assistance to businesses based on need

Understand changing needs and share best practices

Establish programs that benefit the local business community

Adopt local policies to support small businesses

Leverage state and federal resources and legislative opportunities

Economic Recovery

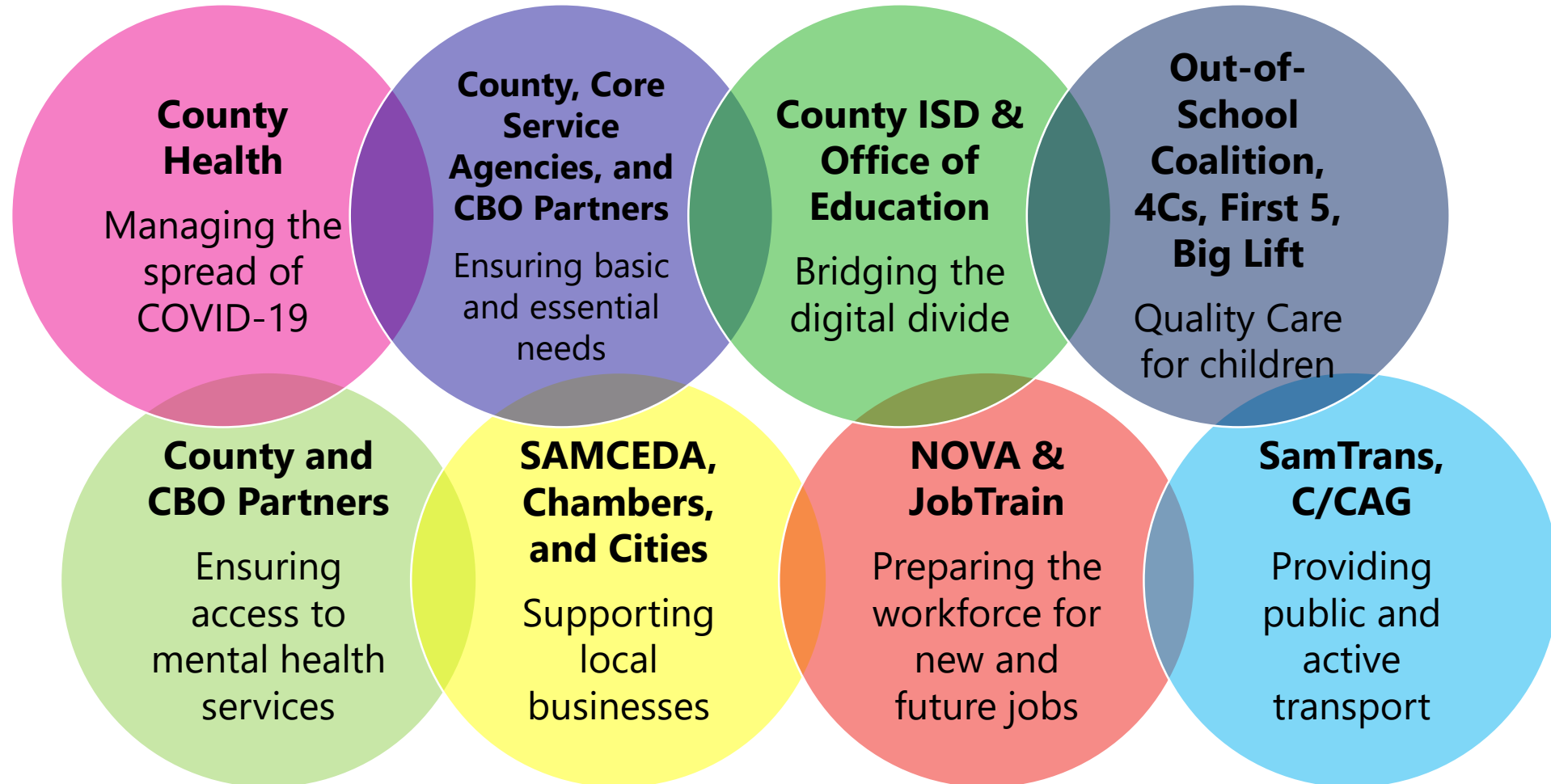
 Prepare the workforce for
Post-COVID Jobs

Gather job market intelligence

Provide relevant training programs

Leverage state and federal resources and legislative opportunities

Implementation Leads



Next Steps for Implementation

- County Recovery Initiative Staff convene lead and support organizations and continue to support implementation
- Invite Equity Recovery Group members to join working groups
- Share and affirm recovery initiative recommendations and implementation plan with lead organizations
- Develop focus area workplan, staffing, and near and long-term funding needs and opportunities

Tracking Progress

- Report progress regularly to Recovery Coordination Council and Committees
- Track progress and indicators on public-facing website
- Constant review and update to remain flexible to changing circumstances (public health situation, community needs, resources, funding)

Questions?

Peggy Jensen

Deputy County Manager
San Mateo County

pjensen@smcgov.org

Danielle Lee

Assistant Director
Office of Sustainability,
San Mateo County

dlee@smcgov.org

Jessica Stanfill Mullin

Sustainability Program
Manager, Livable
Communities
Office of Sustainability,
San Mateo County

jmullin@smcgov.org