



**SAN MATEO COUNTY
ENERGY WATCH**

**Congestion Management and
Environmental Quality Committee**
March 29, 2021

SMCEW Local Government Partnership

July 1, 2020 – June 30, 2023

Topics:

- Program Development and Launch
- Program Partners
- Customers Served
- Customer Approach and KPIs
- Small Business Innovations
- PG&E-funded RICAPS Components



SAN MATEO COUNTY
ENERGY WATCH

Program Development and Launch

CPUC Business Plan - 2017

- Multi-IOU Statewide Contract Development
- RFA and RFP
- Contracting and C/CAG Board
- Program launched July 1, 2020

First three-month deliverables

- Program Implementation Plan
- Program Management Plan
- Presentation to and Posting on CPUC
- Data Security Review

Monthly processes - ongoing

- Reporting and Invoicing
- Bi-weekly meetings with PG&E and partners

Database development

Website update

Marketing Plan



Program Partners



+ Resource
Program
Implementers



20 cities
+ County



Local Governments Empowering Our Communities



Community-Based
Organizations



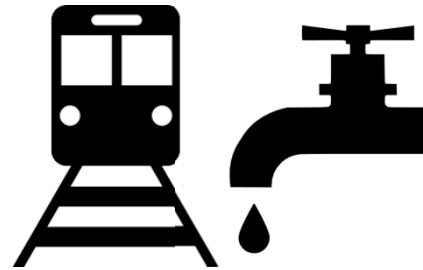
+ local
chambers
+ economic
development
directors



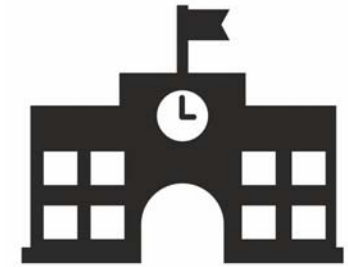
Customers Served by SMCEW



Municipalities



**Special
Districts**



K-12 Schools



**Hard-to-Reach
Small Businesses**



Municipalities, Special Districts, and K-12 Schools

The SMCEW
is a referral
program.

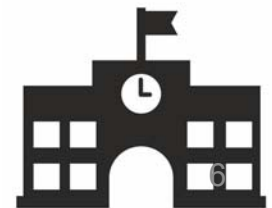
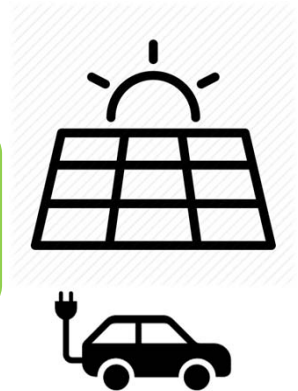
Systems thinking
to ensure value
of referrals

Leverage
relationships

Use site data
and interests find
opportunities

Provide referrals

Create reports
and plans



Coordinated Support for Municipalities and Special Districts

Technical Support

- Benchmarking reports
- Energy Action Plans
- Scope of work development

Financial Support

- On-Bill Financing program application
 - 0% loans up to \$4M
- Incentive and rebate referrals to implementers

New - Ongoing Support

- Template decarbonization policy for existing facilities
- Facilities Working Group
- Electrification pathways



KPIs Municipalities and Special Districts

- Two referrals so far:
 - County Office Building
 - City Fleet Yard

Type	Target
Contacts	ACTIVE: 14 meetings each year. PASSIVE: 4 emails blasts each year.
Referrals	Year 1: 4 referrals Year 2: 11 referrals Year 3: 12 referrals
Benchmarking Reports	14 reports each year
Community GHG inventories	21 Community-scale GHG emission inventories per year
RICAPS Working Group Meetings	12 meetings per year
Facilities Working Group Meetings	10 meetings over the three-year contract

Coordinated Support for Schools

- Collaborating with County and County Office of Education (COE) programs to provide support to schools
 - other similar support activities as the municipal program
- Attending COE facilities manager meetings
- Launched new Facilities Working Group
 - inside look at the needs and challenges faced by schools facilities managers
 - catalyze project opportunities



KPIs K-12 Schools

Two benchmarking reports, one referral so far

- Ravenswood School District
- Peninsula School
 - HVAC retrofit, boiler replacement, lighting upgrades

Type	Target
Contacts	ACTIVE: 16 meetings each year. PASSIVE: 4 email blasts each year.
Referrals	Year 1: 3 referrals Year 2: 11 referrals Year 3: 12 referrals
Benchmarking Reports	16 reports each year
Facilities Working Group Meetings	10 meetings over the three-year contract

SMC Public Facilities Working Group

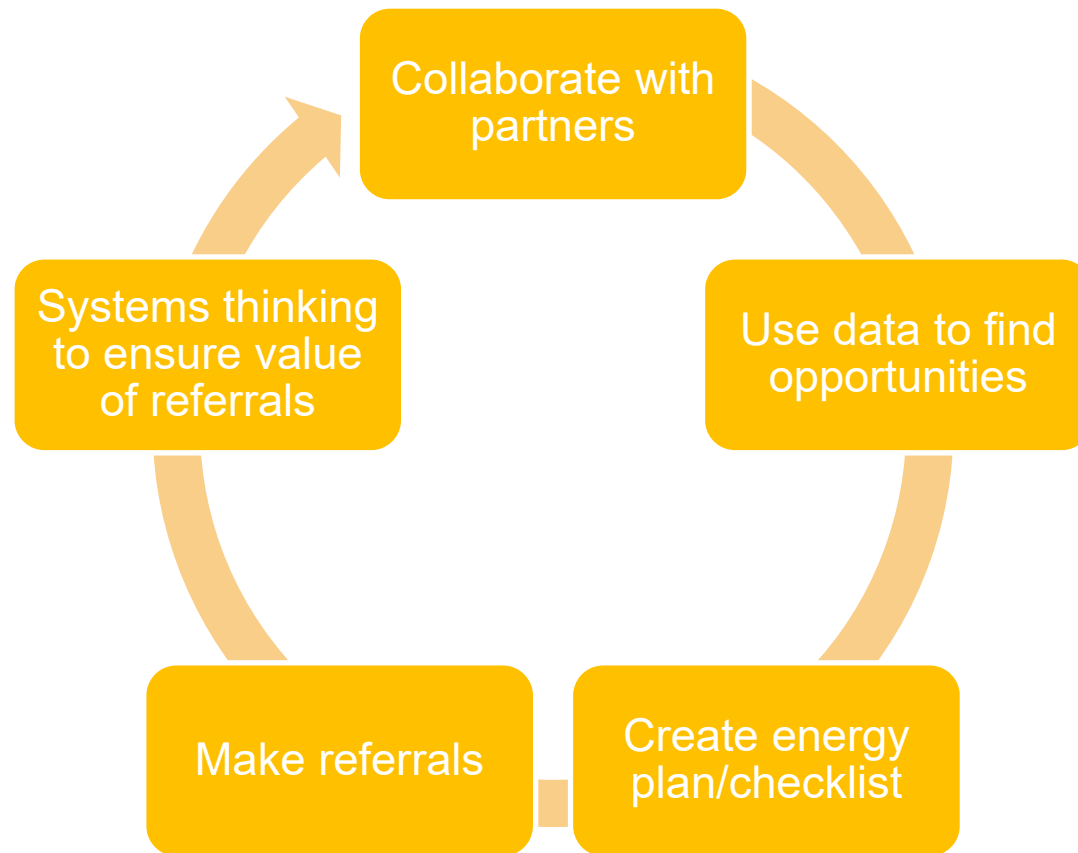
- **Working Group Introduction**
 - Overview of available financial support and technical assistance resources, and a brief introduction to working group goals
- **Options for Building Vacancies and Vampire Loads**
 - An inside look at opportunities to reduce energy consumption during extended building vacancies



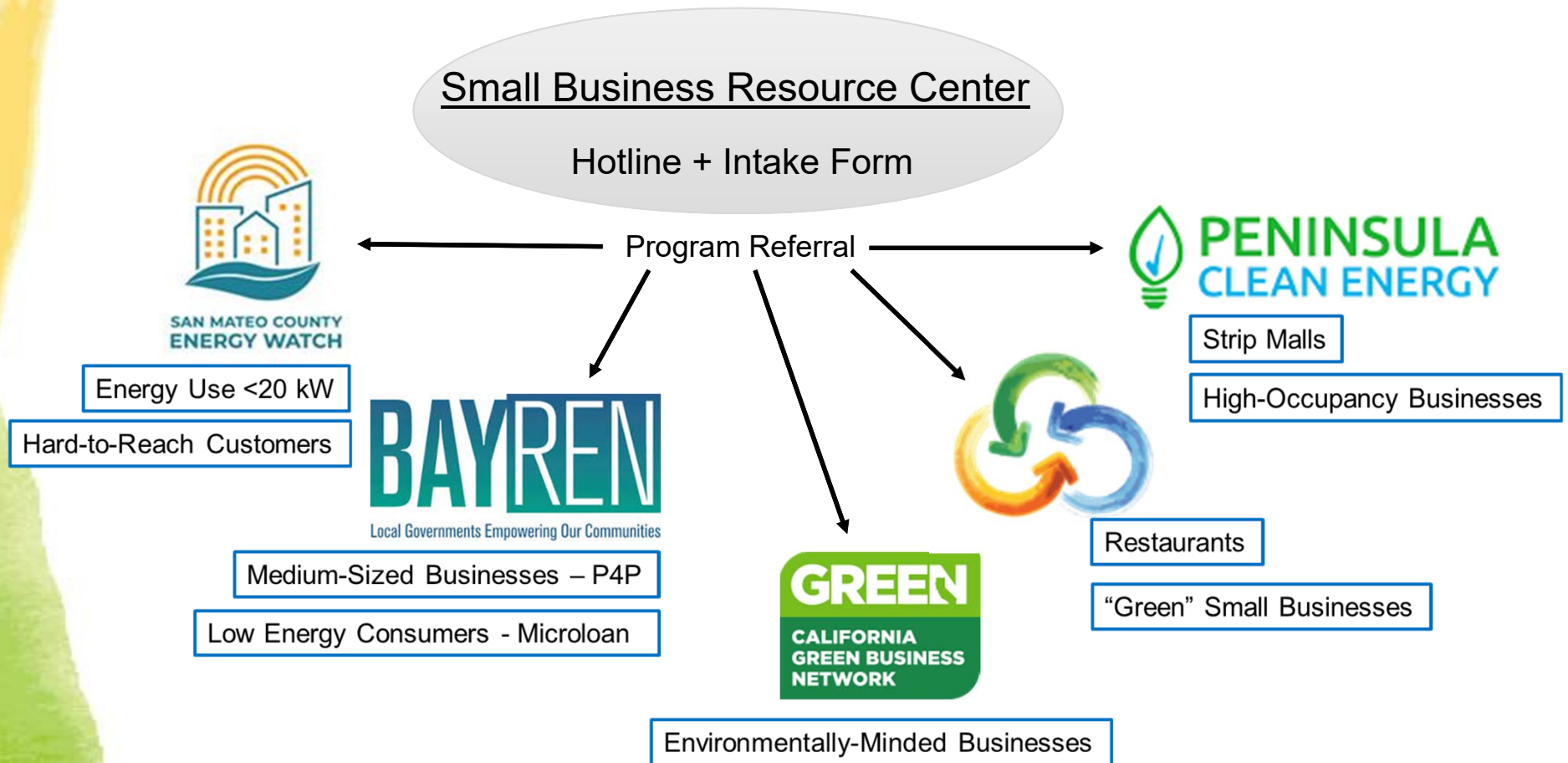
January 12, 2021: 10-11:30am

*Featured a presentation from
Duane Kubischta, KW Engineering*

Hard-to-Reach Small Businesses



Small Business Collaboration





KPIs Hard-to-Reach Small Businesses

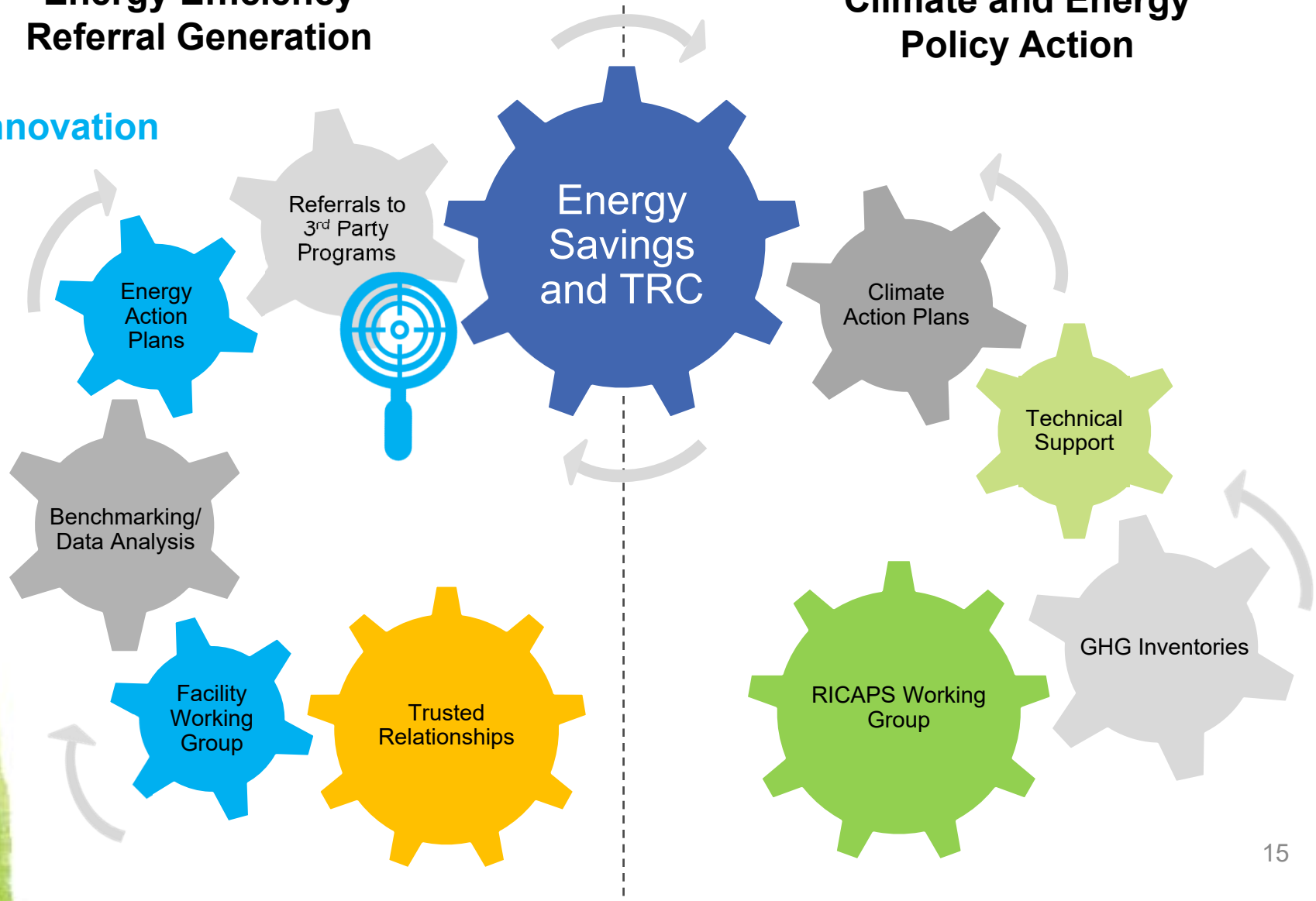
Type	Target
Contacts	ACTIVE: 500 in-person "touches" each year PASSIVE: 1,000 HTRS SMBS reached through partners each year
Referrals	50 referrals each year
Benchmarking Reports	Benchmarking for 25 SMBs each year



Energy Efficiency Referral Generation

Climate and Energy Policy Action

Innovation





RICAPS Monthly City Working Group Meetings

- August 2020 – SMC Energy Watch Program Launch - update
- September 2020 – Electrification of Single-Family Homes
- October 2020 – Accelerating EV Adoption
- November 2020 – Resources for Municipalities
- December 2020 – Looking Back at 2020 and Forward to 2021
- January 2021 – EV Infrastructure & Single-Family Home Electrification
- February 2021 – Carbon Neutrality, CEQA for Climate Action Plans
- March 2021 – Comm. Benchmarking Ordinances, Reach Codes for existing, CPUC presentation

Attendance is growing:
East Bay, North Bay, South Bay,
Regional and State participation

Focus Items for early 2021

- Begin active outreach to HTR small businesses
 - PCE's Small Business interest list
 - PG&E's 0-20kW + 21-200kW pull list
- Develop and Implement use of contact database
- Develop Marketing Plan and deliver to PG&E
- Develop stronger relationships with economic development directors
- Ramp up support for Municipalities
 - Coordinated support offerings; individualized meetings
- Prepare for second SMC Facilities Working Group meeting in April 2021
 - Topic: *Fleet Vehicle Electrification and Outdoor Lighting*





**SAN MATEO COUNTY
ENERGY WATCH**

Thank You!

Kim Springer
kspringer@smcgov.org

C/CAG
City/County Association of Governments
of San Mateo County



**OFFICE OF
SUSTAINABILITY**
COUNTY OF SAN MATEO