

SM 101 EXPRESS LANES PROJECT

Quarterly Project Update



C/CAG Board Meeting May 12, 2022

SM 101 EXPRESS LANES PROJECT

AGENDA



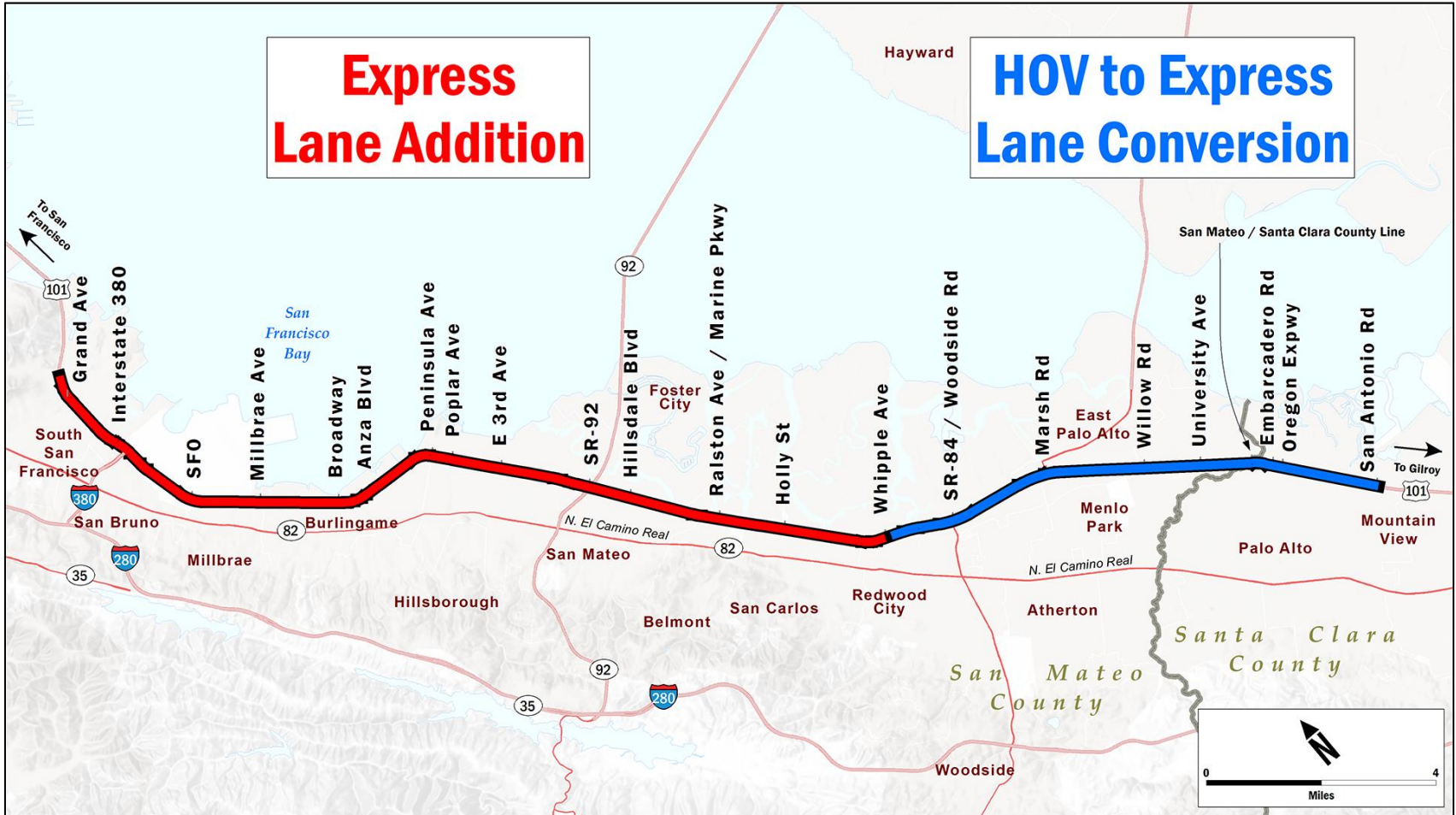
- Construction Progress
- Project Spotlight – Opening the new Lanes
- Public Outreach Activities
- Financial and Risk Status



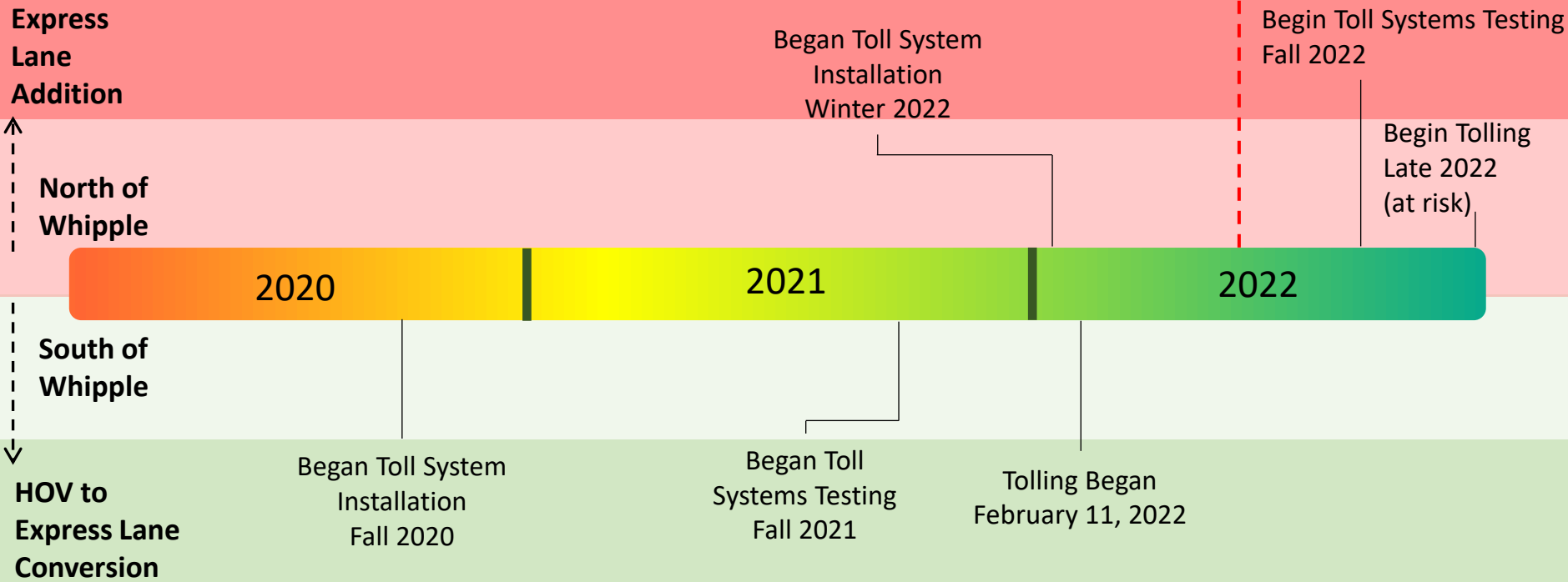
- **Construction Progress**
- Project Spotlight – Opening the new Lanes
- Public Outreach Activities
- Financial and Risk Status

SM 101 EXPRESS LANES PROJECT

PROJECT LIMITS

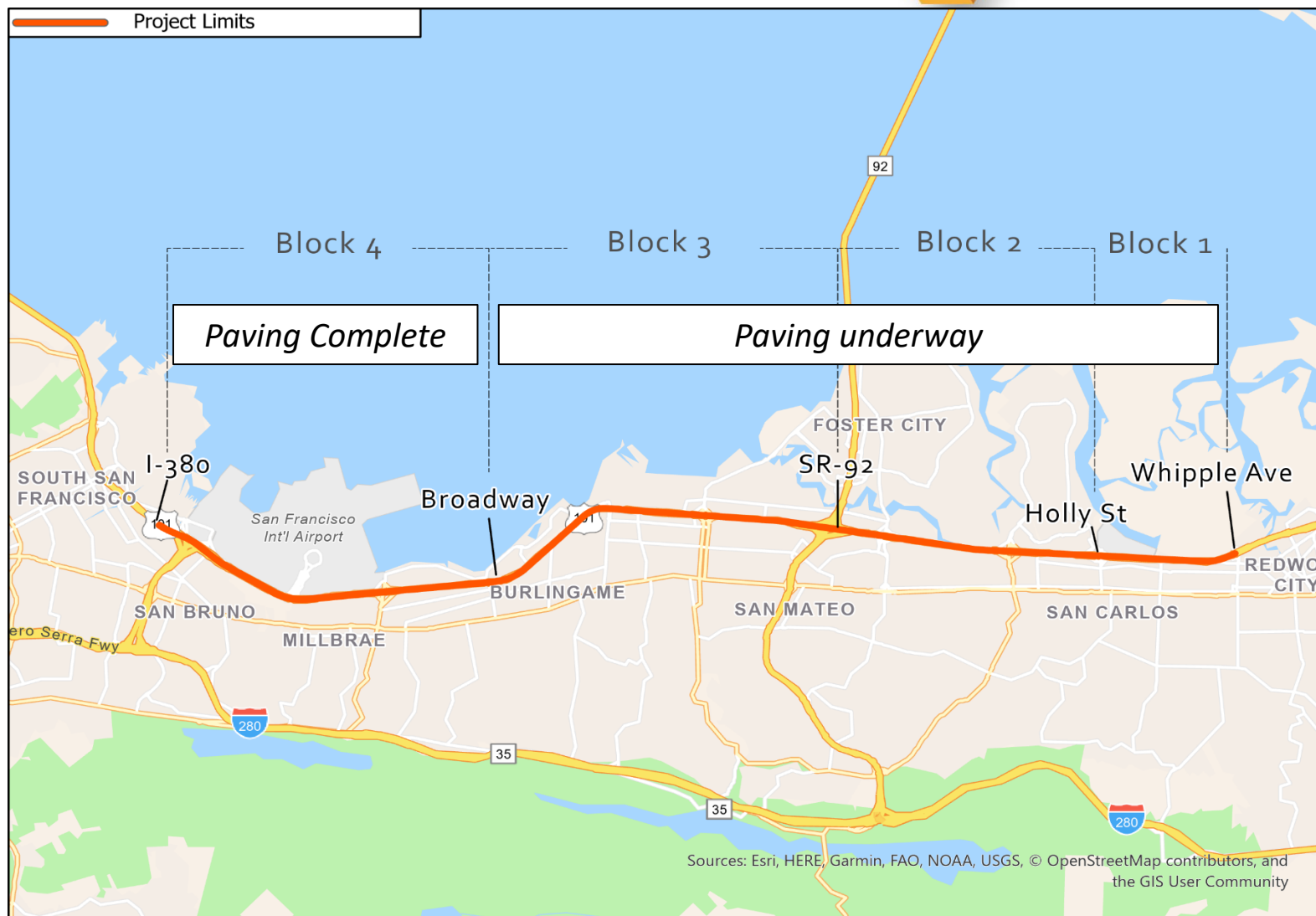


SM 101 EXPRESS LANES PROJECT PROJECT SCHEDULE



✓ **South Segment Tolling is now Operational!**

SM 101 EXPRESS LANES PROJECT NORTH CONTRACT CONSTRUCTION BLOCKS



SM 101
EXPRESS LANES PROJECT
NORTH CONTRACT WORK COMPLETED



North of Whipple through March:

- \$290M of \$326M completed (89%) with 75% time elapsed.
- 53.9% of open graded asphalt concrete (final layer) placed.
- Median barrier architectural treatment nearly complete.
- All drainage work complete.
- All overhead signs installed (except sign bridges).
- PG&E work majority complete.



Temporary Reflective Barrier (Channelizer) Installation



SM 101
EXPRESS LANES PROJECT
NORTH CONTRACT WORK ONGOING



Toll System Installation



SM 101
EXPRESS LANES PROJECT
NORTH CONTRACT WORK ONGOING



Overhead Sign Bridge Installation





North of Whipple:

- Finish paving
- Complete toll system infrastructure
- Install remaining overhead sign bridges
- Finish TransCore punch list



South of Whipple through March:

- Construction complete
- Tolling has commenced
- Proceeding with contract closeout



- Construction Progress
- **Project Spotlight – Opening the new Lanes**
- Public Outreach Activities
- Financial and Risk Status

SM 101 EXPRESS LANES PROJECT

OPENING THE NEW LANES TO VEHICLES



Pave and
Paint

Finish paving and striping/markings the new express lanes by block

Closed for
Installation

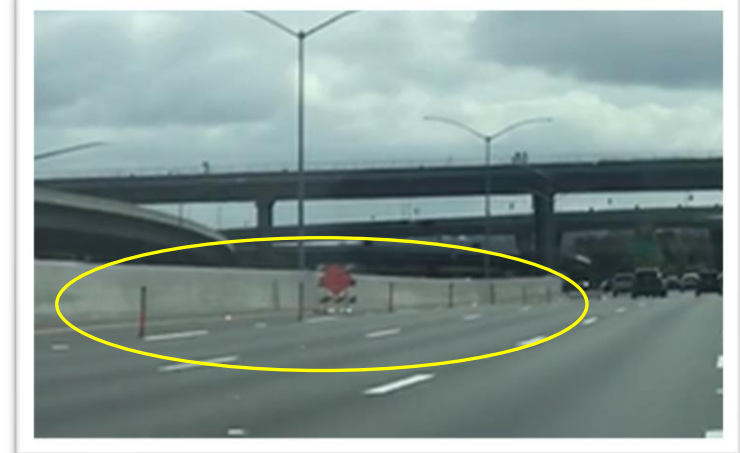
Replace temporary concrete barriers with channelizers, finish installing tolling equipment

Open for
Testing

Open the lanes as "Express Lanes – HOV 3+ Only" for Toll Testing

Begin
Tolling

Conclude Toll Testing and open the lanes as Express Lanes



SM 101 EXPRESS LANES PROJECT

LANE OPERATING MODES DURING TRANSITION



LANE CLOSED

EXPRESS LANE IN HOV-ONLY MODE

TOLLING

System Installation

Testing

Express Lane Operations



- Construction Progress
- Project Spotlight – Opening the new Lanes
- **Public Outreach Activities**
- Financial and Risk Status

SM 101 EXPRESS LANES PROJECT FREEWAY CLOSURE COMMUNICATIONS



Sign Bridge Installation

- 4 Freeway Closures
- Southbound or northbound depending on location
- Sundays, 1 AM – 6 AM
- Detour Maps
- Noticing Methods
 - Traffic Advisory and E-Blasts
 - Project Website
 - Twitter & Facebook
 - City Newsletters
 - Overhead & Roadside Changeable Message Signs
- Updating project partners (e.g., SFO) and public information officers if closures are rescheduled



SM 101 EXPRESS LANES PROJECT PUBLIC INFORMATION OVERVIEW



- Construction updates are distributed via email.
- Visitors can sign up for updates, contact Caltrans to ask a question, and view project status.
- To sign up for weekly or quarterly updates, email with the subject line 'Weekly' or 'Quarterly' to 101express@dot.ca.gov. Follow @CaltransD4 on Twitter for Project updates.



- Construction Progress
- Project Spotlight – Opening the new Lanes
- Public Outreach Activities
- **Financial and Risk Status**

SM 101 EXPRESS LANES PROJECT

CURRENT COST ESTIMATE - CONTRACT FOCUSED



Contract	Budget	Estimated Cost ⁽¹⁾	Variance	Expended as of 03/31/22 ⁽²⁾	Percent Expended	Percent Complete ⁽³⁾	Confidence ⁽⁴⁾
SM-101 Express Lanes Project Costs shown in millions of escalated dollars							
Environmental	20.39	20.28	(0.11)	20.19	99%	100%	●
Design & Right of Way	42.14	42.14	0.00	37.42	89%	90%	●
South Contract – Civil	74.81	74.81	0.00	74.71	99.9%	100%	●
North Contract - Civil	390.87	390.87	0.00	350.46	90%	89%	●
<i>North Contract – Civil</i>	<i>369.51</i>	<i>387.55</i>	<i>18.04</i>	<i>332.42</i>	<i>90%</i>	<i>89%</i>	●
<i>Project Contingency ⁽⁵⁾</i>	<i>21.36</i>	<i>3.32</i>	<i>(18.04)</i>	<i>18.04</i>	<i>84%</i>	<i>89%</i>	●
Toll System	48.12	48.12	0.00	15.83	33%	45%	●
<i>Toll System</i>	<i>43.44</i>	<i>44.33</i>	<i>0.89</i>	<i>14.94</i>	<i>34%</i>	<i>45%</i>	●
<i>Project Contingency ⁽⁵⁾</i>	<i>4.68</i>	<i>3.79</i>	<i>(0.89)</i>	<i>0.89</i>	<i>19%</i>	<i>45%</i>	●
Highway Planting	4.81	4.81	0.00	0.00	0%	0%	●
TOTALS	581.14	581.03	(0.11)	498.61	86%	89%	

(1) Estimated Cost represents current estimated cost to complete each contract.

(2) Expenditures include \$12M deposit against North Contract – Civil.

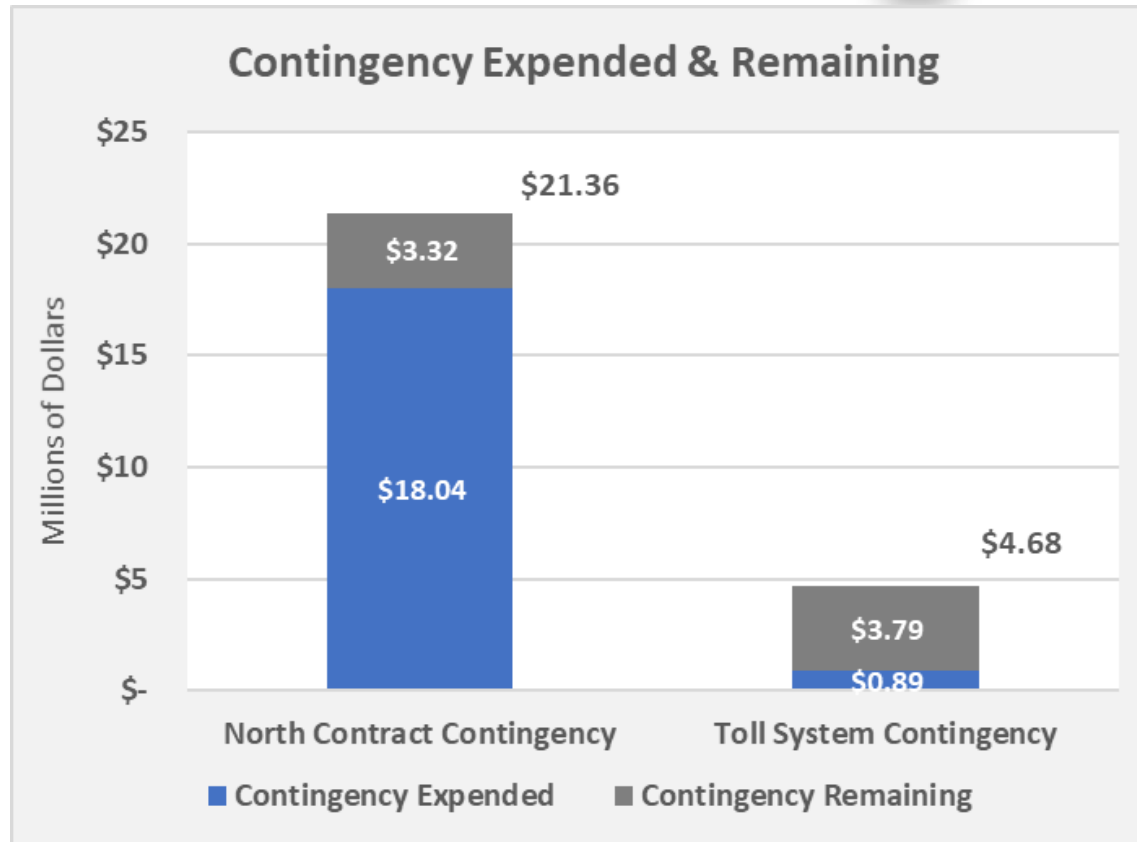
(3) Percent completes shown are based on qualitative assessment of physical % complete per milestones and schedule.

(4) ● = Within budget, ● = identified potential risks that may significantly exceed budget if not mitigated, ● = Known impacts to budget - changes forthcoming.

(5) Assume 100% utilization of Project Contingency in overall estimated cost of project; update since previous report: \$2.96M Supplemental North Contract - Civil savings moved to North Contract – Civil Project Contingency

SM 101 EXPRESS LANES PROJECT

CURRENT CONTINGENCY USAGE & BALANCE – CONSTRUCTION PHASE

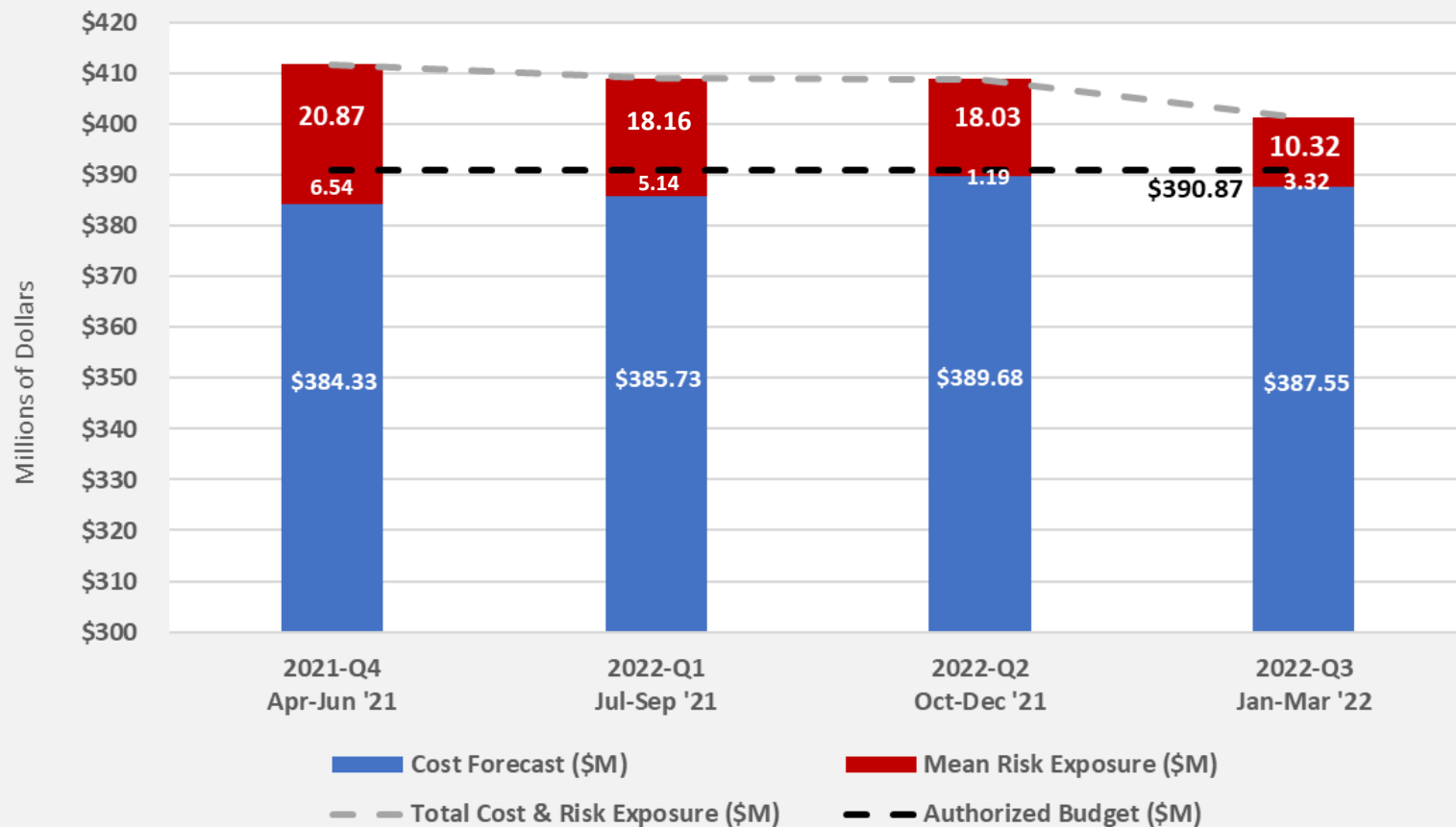


- Contingency expended includes the following:
 - Contract change orders for various reasons including, k-rail salvage, barrier foundation revisions, grade and drainage revisions, maintenance of landscape areas, misc. signage issues, and pavement corrections.

SM 101 EXPRESS LANES PROJECT



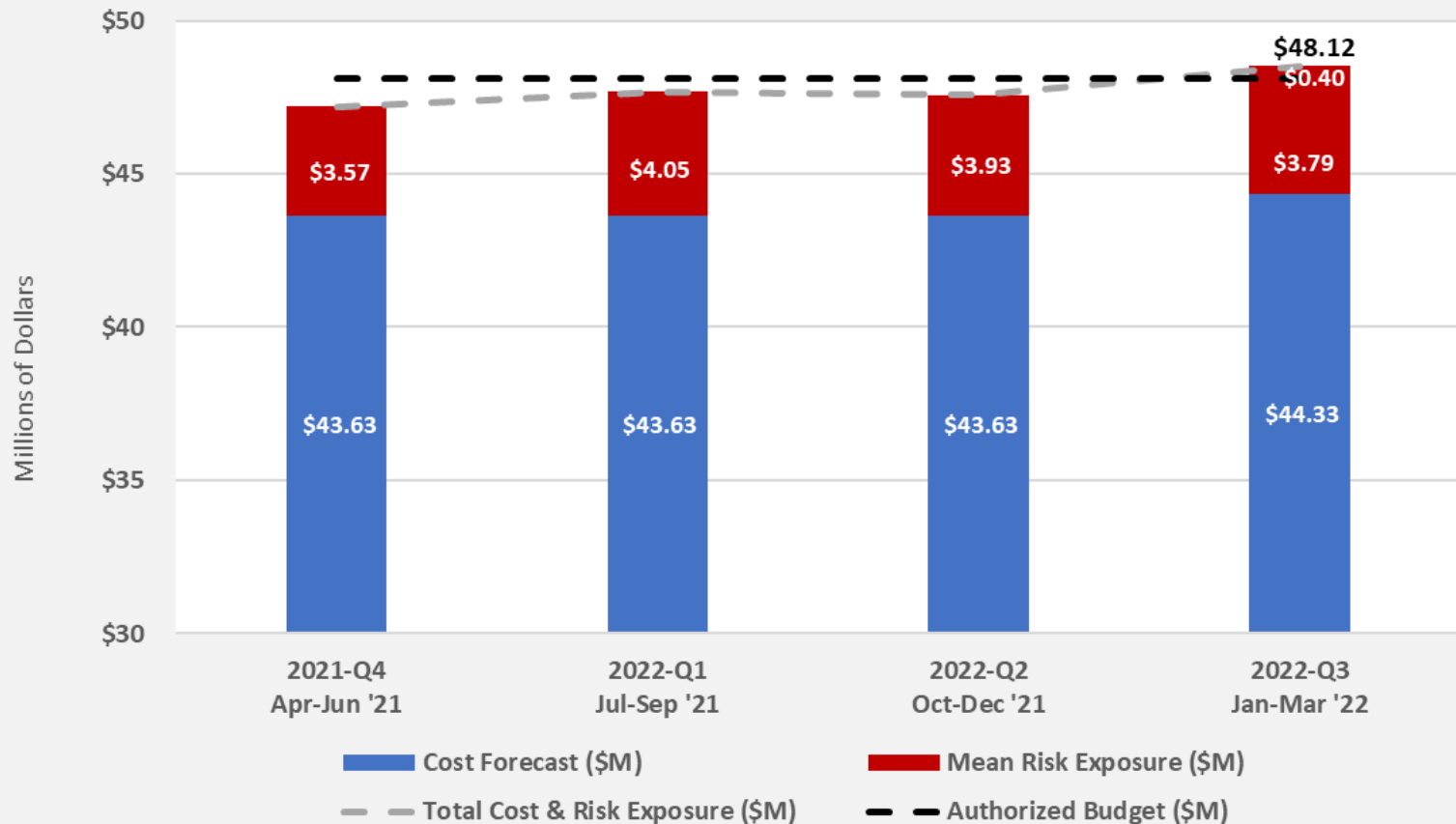
North Contract Cost Forecast and Risk Exposure vs. Authorized Budget



SM 101 EXPRESS LANES PROJECT



Toll System Contract Cost Forecast and Risk Exposure vs. Authorized Budget





Questions?