



Recommendation for Technical Consultant Selection to the Countywide Stormwater Program

C/CAG Board of Directors Meeting – July 14, 2022



Consultant Support to the Countywide Program

Two full-time staff

Technical support

- General Support to Program Manager
- All MRP compliance technical work
 - Local, countywide regional



Consultant Support to the Countywide Program

5-year permit term expired in December 2020

New MRP (“MRP 3.0”) effective July 1, 2022

On-call contracts expire September 30, 2022



Consultant Support to the Countywide Program

Costs increasing with each permit

MRP 3.0 expands and adds on to existing requirements

New Elements:

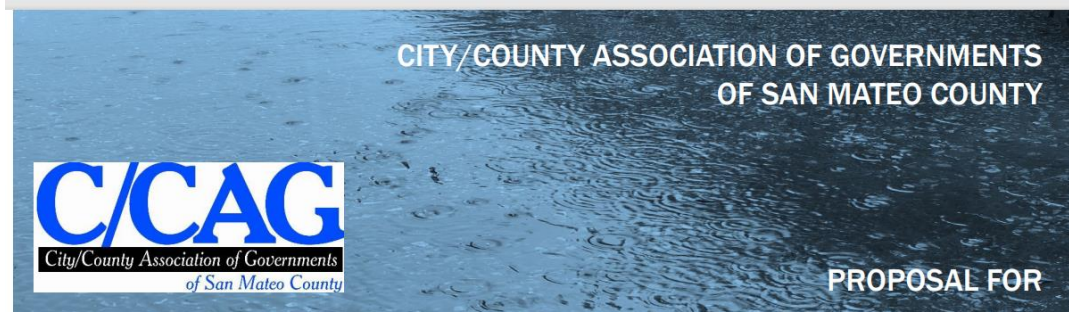
- Changes to “Regulated Projects”
- New Monitoring (Trash/LID)
- Homeless encampments/fire-fighting discharges
- Asset Management
- Cost Reporting



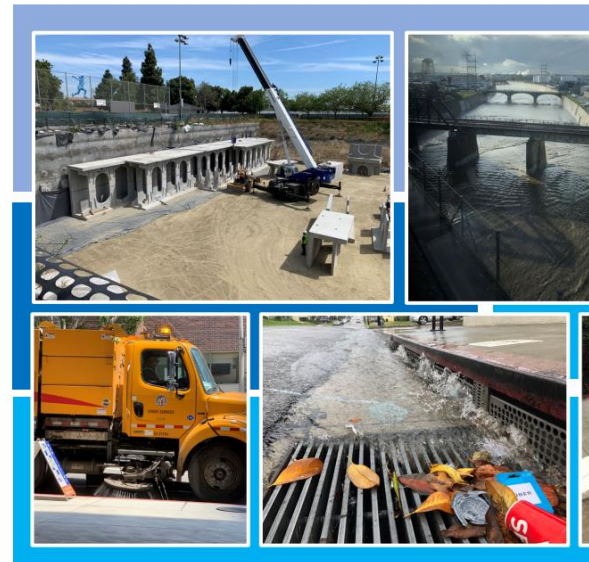
RFP Process:

- Link term to length of MRP Permit
- Continue to implement Water Pollution Prevention Program with 13 Identified Tasks
- Flexibility about which Tasks firms could propose on
- Distributed to 200+ recipients
- Received 3 proposals (EOA/CW/SGA)
- EOA- All 13 Tasks
- Craftwater 4 Tasks (Annual Reporting/GI & Regional Planning/Cost Reporting/Asset Management)





TECHNICAL SUPPORT TO THE SAN MATEO COUNTYWIDE WATER POLLUTION PREVENTION PROGRAM



Primary Proposer: **craftwater** engineering, inc.

PROPOSAL FOR TECHNICAL SUPPORT TO THE SAN MATEO COUNTYWIDE WATER POLLUTION PREVENTION PROGRAM

A PROGRAM OF





Prepared by EOA, Inc. in association with Geosyntec Consultants, Paradigm Environmental, Urban Rain Design, SGA, Kinnetic Environmental, and SCI Consulting Group



May 27, 2022

Review Panel Recommendation

Three-year on-call contracts:

- Eisenberg, Olivieri & Associates
- Craftwater Engineering

FY22-23 Task Orders:

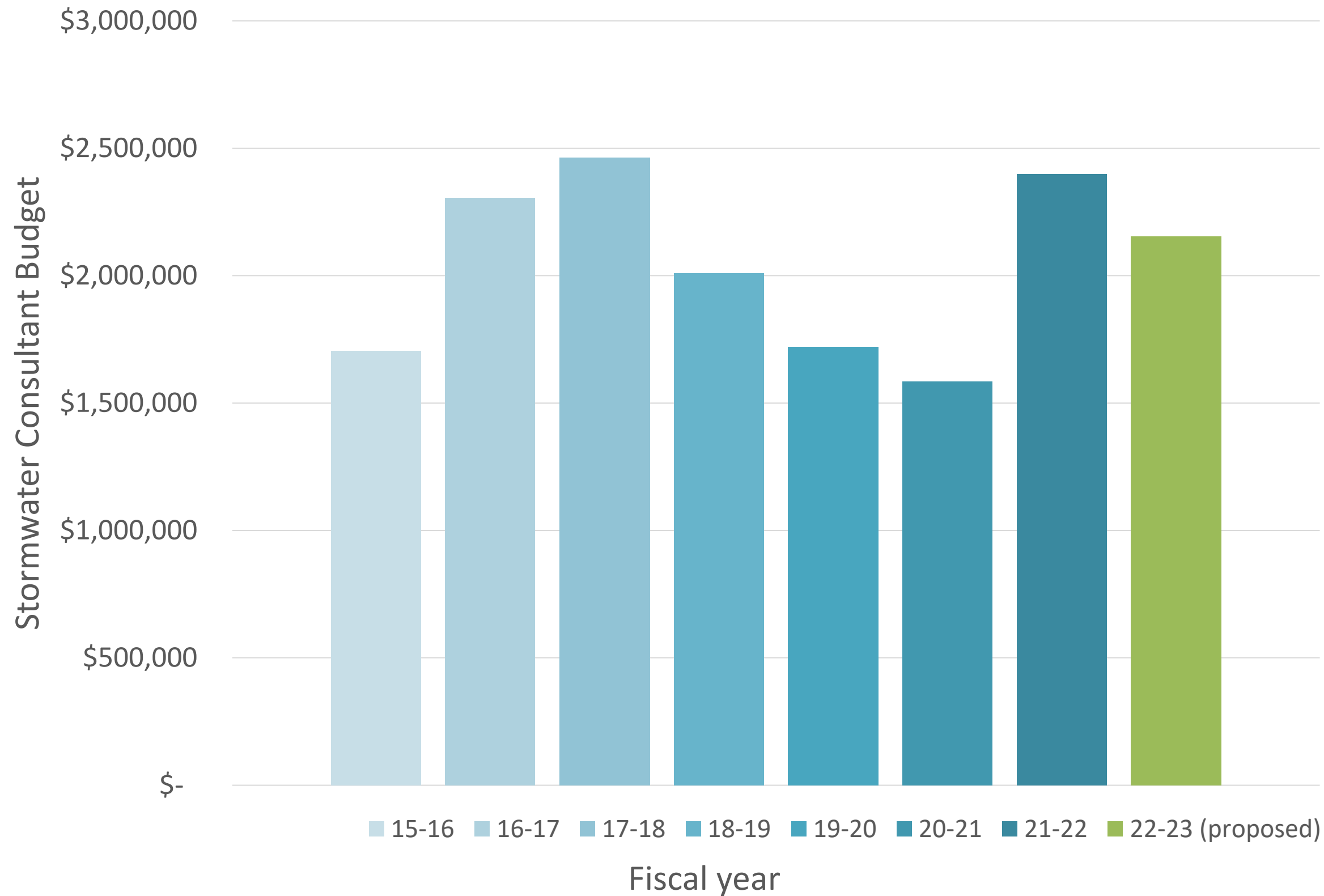
- Cumulatively not to exceed \$1,905,000

Future FY amounts contingent on need and annual program budget approval

Option to extend contracts after three years



Stormwater Technical Consultant Budgets (MRP 2.0 and FY2022-23)



- Costs increase early permit, taper off and increase again towards end of permit for reissuance
- Plan for FY2022-23 is to keep costs relatively streamlined at outset recognizing costs will increase in coming years
- Consistent with prior year strategies



Any Questions?

Reid Bogert, Senior Stormwater Program Specialist, rbogert@smcgov.org



Image Source: <http://astanehelaw.com/2020/09/02/san-mateo-county-passes-emergency-ordinance-establishing-paid-sick-leave-for-the-coronavirus-covid-19-pandemic/>