

Equity Assessment and Framework Development Project

RMCP Committee Meeting – October 19, 2022



MARIPOSA
PLANNING SOLUTIONS



es·pousal
STRATEGIES



PCRC

PENINSULA CONFLICT RESOLUTION CENTER

C/CAG

City/County Association of Governments
of San Mateo County



Overview

Project Scope

Timeline

Engagement with CBOs, Partner Agencies, and Staff

Engagement Participants

Documents Produced to Date

Defining Equity Priority Communities

Draft Equity Definition (in packet)

Discussion and Feedback

Equity Project Scope

Engagement Components:

- CBOs (and compensate) – 3 meetings
- Agency Partners – 3 meetings
- All-staff – 4 meetings
- CMEQ Committee and C/CAG Board – 6 meetings

Background Research:

- Historical perspective
- Equity Priority Communities (EPCs) definitions
- Equity Definition for C/CAG's scope and influence

Deliverables:

- Memos and notes from engagements
- Historical document
- EPC Mapping for C/CAG programs
- Final Equity Definition and Pledge
- Best Practices and Framework
- Draft and Final Reports



"A view from the St. Francis neighborhood in Daly City. (Sebastian Miño-Bucheli/KQED)"
Source: <https://www.kqed.org/news/11883382/in-daly-city-the-bayanihan-spirit-is-alive-and-well>

Timeline

Fall 2022	Winter 2022/2023	Spring 2023	Late Spring- Early Summer 2023
<ul style="list-style-type: none"> • Equity definitions • Historical perspective • Connections between C/CAG's program areas and equity 	<ul style="list-style-type: none"> • Equity metrics & DAC mapping • Identification of equity impacts, issues, and needs connected to C/CAG's work 	<ul style="list-style-type: none"> • Peer review of equity practices • Existing C/CAG equity integrations • Focused delineation of C/CAG's role in equity 	<ul style="list-style-type: none"> • Final Reports, Policies, Statements, and Framework



Rooted and uprooted in North Fair Oaks, May 16, 2022, Don Shoecraft
 Source: <https://climaterwc.com/2022/05/16/rooted-and-uprooted-in-north-fair-oaks/>

Engagements

1 CBO & 1 Agency Partner Meeting

- Introductions & project overview
- Input on historical perspectives, equity connections to C/CAG program areas, data & indicators to be explored, and equity definition

2 Staff Meetings

- Introductions and project overview
- Review of CBO & Agency input
- Discussion regarding Draft Equity Definition, equity indicators, & mapping EPC's



"An aerial view of East Palo Alto. Photo via Wikimedia Commons, CC BY-SA 3.0"
Source: <https://shelterforce.org/2022/03/22/the-nexus-between-rent-control-and-incorporation-in-east-palo-alto/>

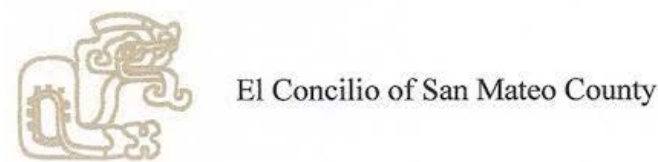
Engagement Participation

Phase I Input:

- Agency Partner Meeting Participants



- Community Working Group Meeting Participants



Ερήϊβο ἰρροκλῆϊ βίῃ ἠεὶ

Historical Perspective:

- Conducted a literature scan that provides examples of public and private actions that contributed to historical harm locally, regionally, and statewide.
- Resources were divided into themes:
 - California Native History
 - Land Use & Housing Discrimination
 - Environmental Justice & Energy Equity
 - Transportation Injustice
 - Other Examples of Discriminatory Actions (Chinese Exclusion Laws and Japanese Internment)



Newly assembled barracks, photographer Dorothea Lange, Apr. 29, 1942, Tanforan Assembly Center, California.. (2020, November 18). *Densho Encyclopedia*. Retrieved 21:26, October 11, 2022 from <https://encyclopedia.densho.org/sources/en-denshopd-i151-00019-1/>.

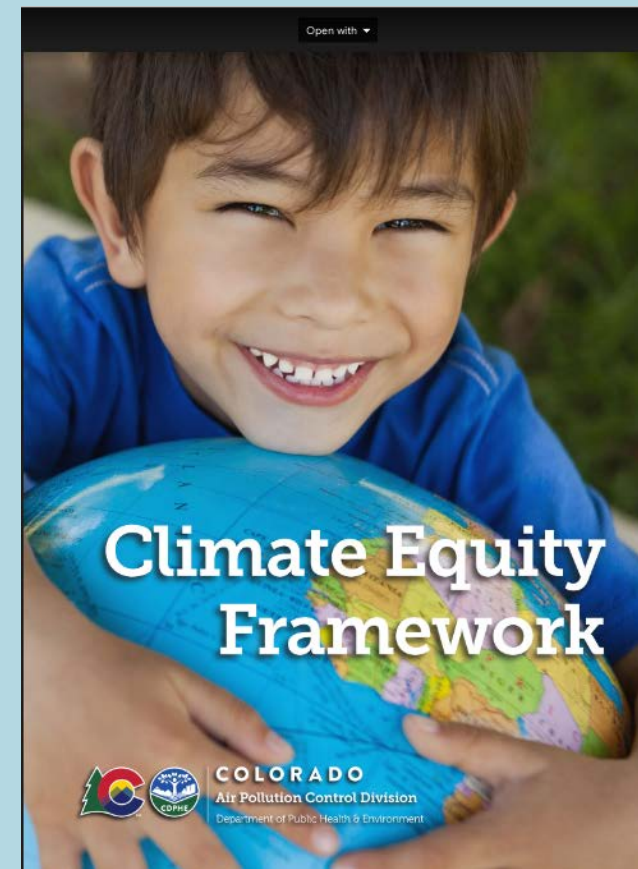
Documents Produced to Date

Example Equity Definitions Handout:

- Searched for public agency equity definitions associated with each of C/CAG's program areas
- Requested other equity definitions of interest from Agency Partners & CBO meeting participants

C/CAG Draft Equity Definition:

- Developed key themes based on input from Agency Partners & CBOs
- Used the themes & equity definitions cited by meeting participants to develop the Draft Equity Definition
- Refined the Definition based on C/CAG staff input



Source: <https://cdphe.colorado.gov/air-pollution/climate-change#equity>

Defining Equity Priority Communities



Reviewed existing Equity Priority Community/demographic indicators, maps, & tools



Developed initial indicators for consideration in geographic assessment

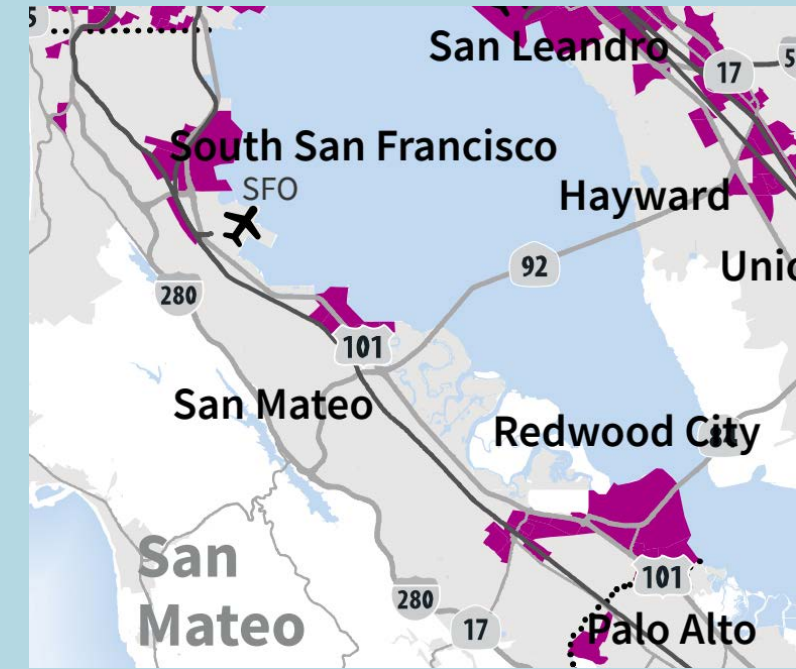


Identified C/CAG interest in consistency across agencies, as well as specificity to C/CAG's programs

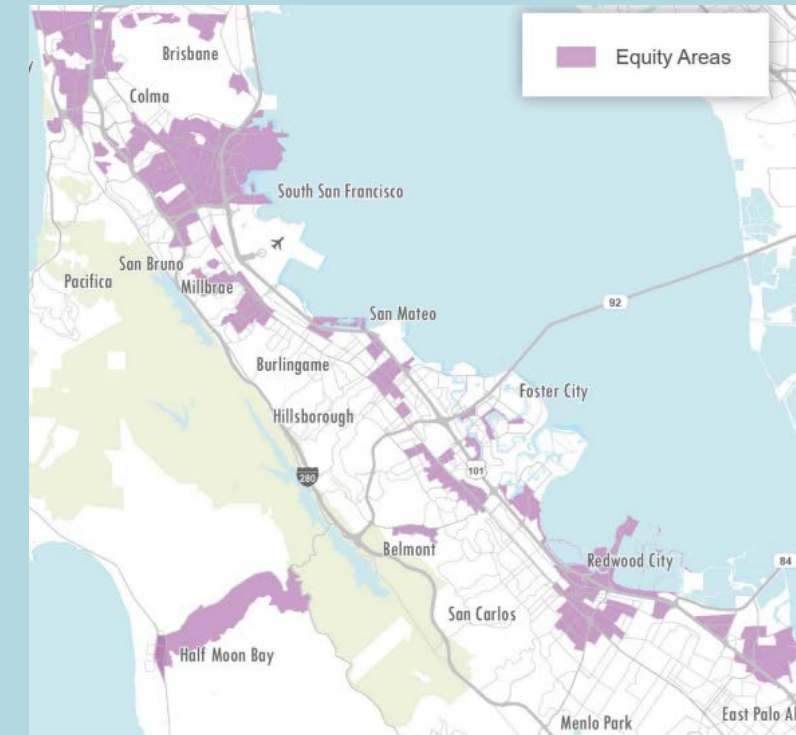


Next steps: Finalize EPC mapping strategy, including deliverables
Updated indicators relevant to C/CAG program areas

MTC Equity Priority Communities Map
Source: https://mtc.ca.gov/sites/default/files/Equity_Priority_Communities.pdf



Reimagine SamTrans
Source: <https://www.samtrans.com/about-samtrans/reimagine-samtrans>



Key themes used to develop the Draft Equity Definition

Provide context

- Acknowledge the historic context

Address & Advance

- Focus on equity advancement & use harm-reduction requirements as the floor

Distinguish

- Distinguish between equity and equality
- Both process and outcome equity are essential

Apply

- Create an actionable definition that is relevant to C/CAG's mission & role

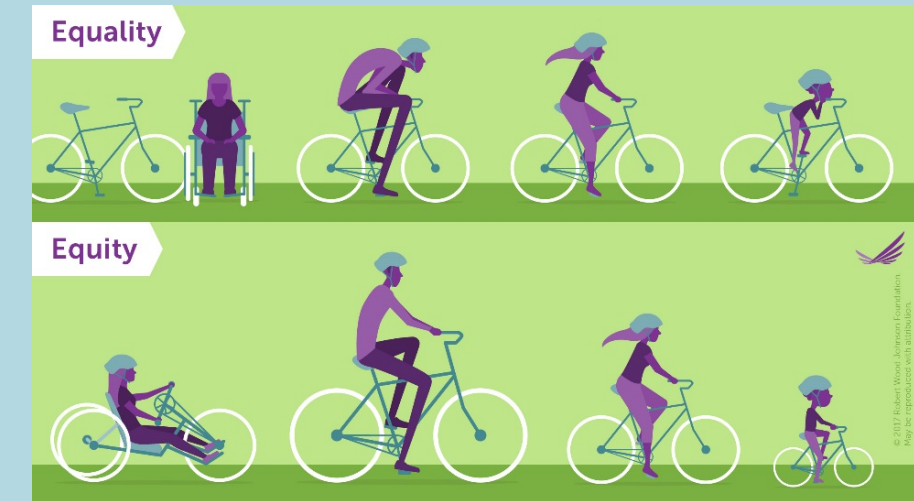
Collaborate

- Collaborate with other agencies to leverage strengths

Equity Definition Draft

(refer to packet)

C/CAG is committed to helping rectify historic harms to people of color and other Equity Priority Communities and Populations and addressing longstanding disparities by centering these voices and providing benefits for these populations in the work we do. By doing so, C/CAG will help achieve the County of San Mateo's definition of Equity: Just and fair inclusion into a society in which all can participate, prosper, and reach their full potential. C/CAG and other local and countywide agencies will know we are making progress in improving equity when neighborhood, race, ethnicity, gender, age, disability, income, sexual orientation or expression has no detrimental effect on the distribution of resources, opportunities and outcomes for our County's residents.



Visualizing Health Equity: One Size Does Not Fit All Infographic. Robert Wood Johnson Foundation.
Source: <https://www.rwjf.org/en/library/infographics/visualizing-health-equity.html#/embed>

Discussion and Feedback

Kim Springer – C/CAG Equity Project Lead

kspringer@smcgov.org

