



## Planning for Equitable Climate Resilience

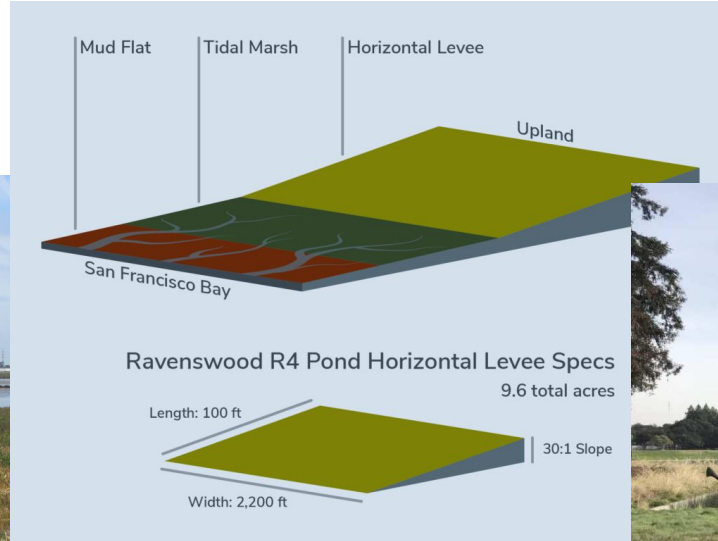
Hayley Currier, [hcurrier@savesfbay.org](mailto:hcurrier@savesfbay.org)

# SAVE THE BAY

We work to protect and restore San Francisco Bay for people and wildlife

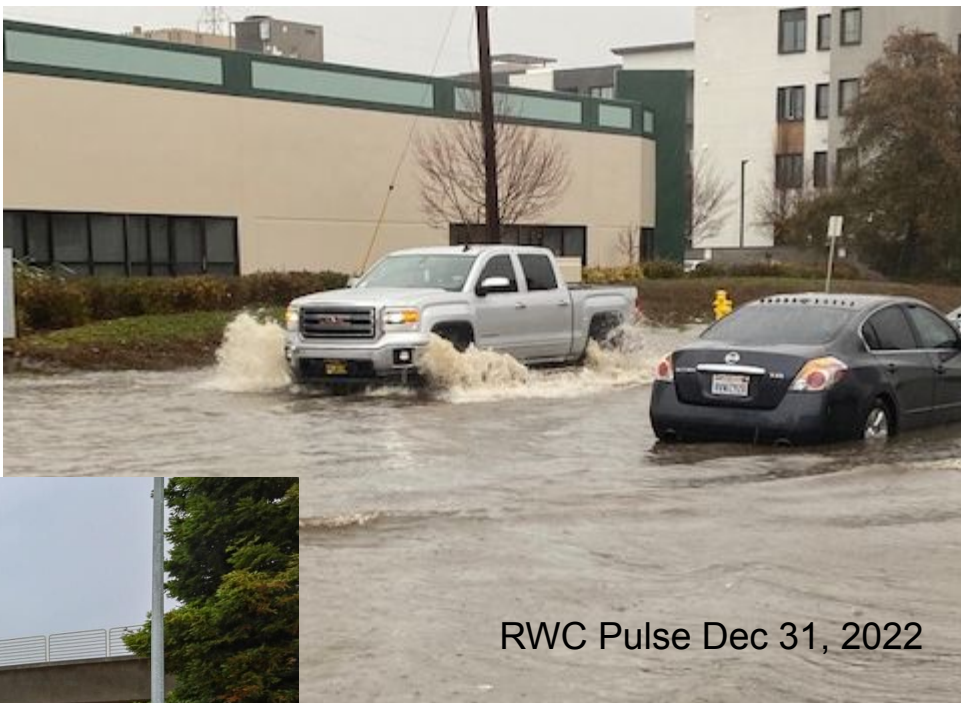
- Advocacy
- Habitat restoration
- Community education

# Nature-based climate resilience





RWC Pulse Dec 31, 2022

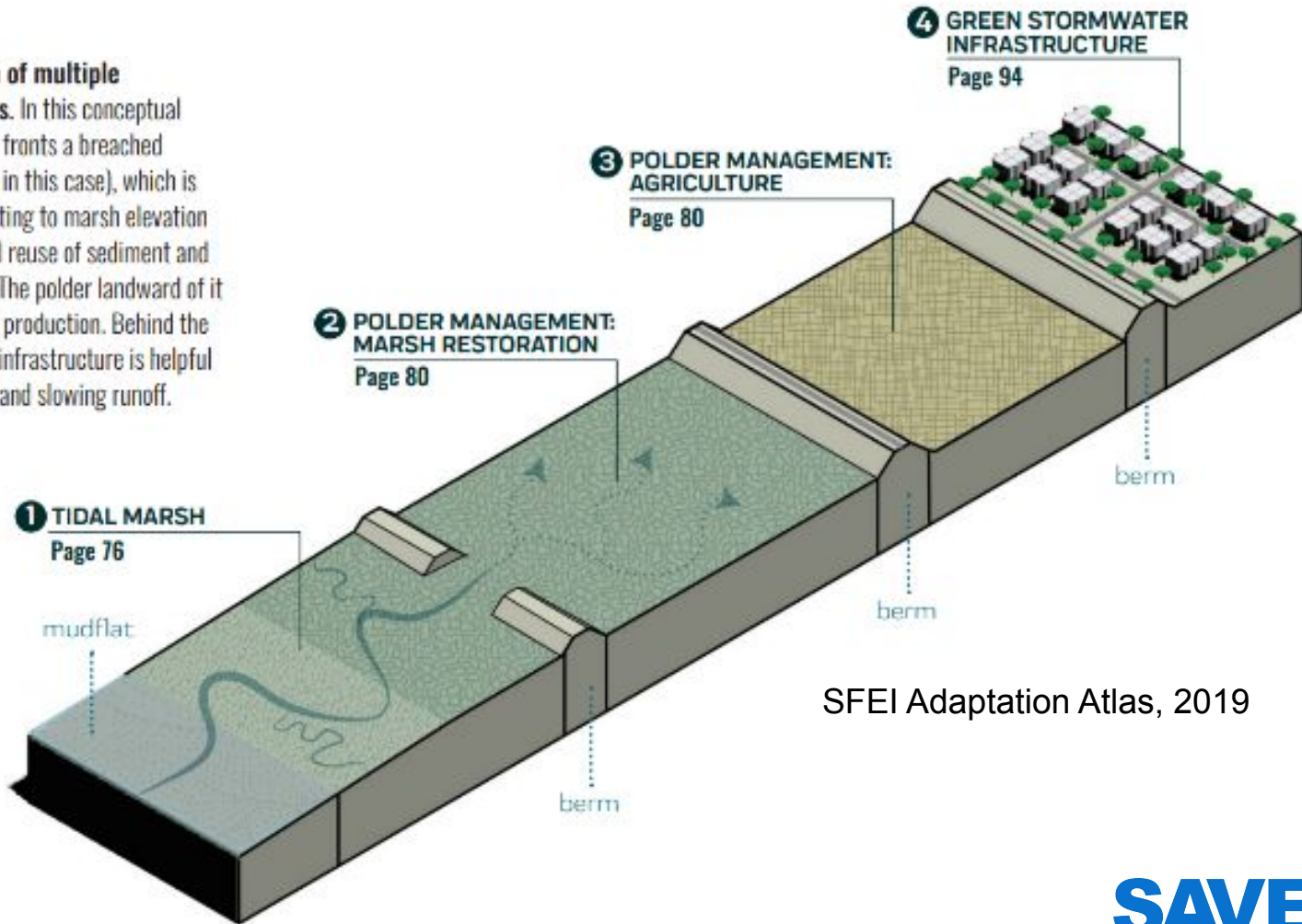


RWC Pulse Dec 31, 2022

The Daily Journal, Dec 31, 2022

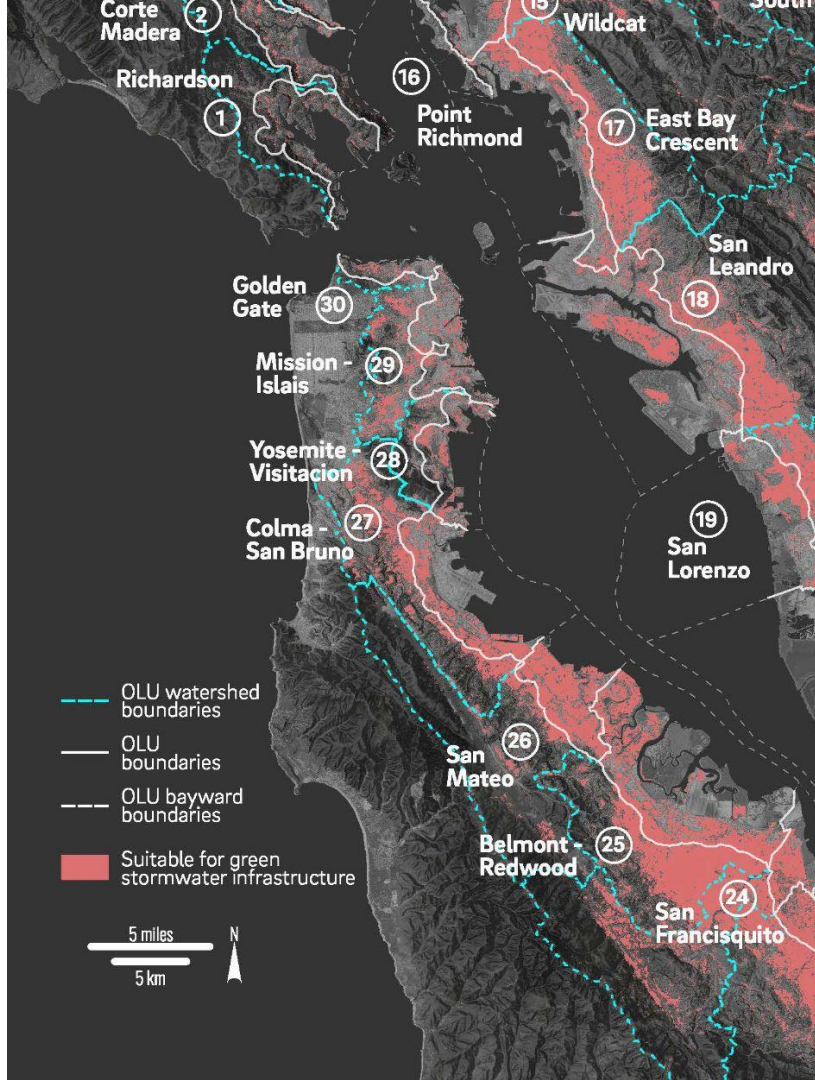


**Conceptual diagram of multiple adaptation measures.** In this conceptual example, a tidal marsh fronts a breached polder (diked baylands in this case), which is in the process of accreting to marsh elevation both through beneficial reuse of sediment and increased tidal action. The polder landward of it remains in agricultural production. Behind the flood risk levee, green infrastructure is helpful for spreading, sinking, and slowing runoff.



SFEI Adaptation Atlas, 2019





SFEI Adaptation Atlas, 2019

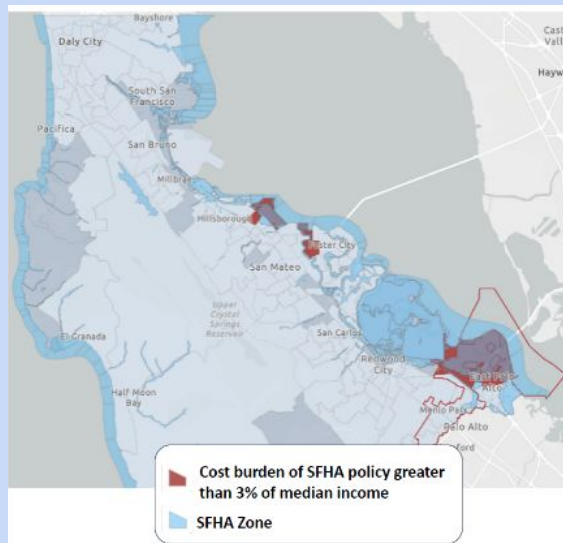
**“In the San Francisco Hydrologic Region, approximately 355,000 Bay Area residents and \$46.2 billion in structures and contents are located in a 100-year floodplain; over 1 million residents and nearly \$134 billion in structures and contents are located in a 500-year floodplain.”**

Surviving the Storm, 2015  
Bay Area Council and CA Coastal Conservancy

**SAVE THE BAY**

# Flood Resilience and Inequity

- Insurance cost
- Retrofit cost
- Ability to recover
- Environmental racism
- Public health



## Cost burden of Insurance

(Avg policy cost divided by household median income)

	SFHA	Non-SFHA
Belle Haven	3.7%	0.8%
Menlo Park	1.1%	0.5%
San Mateo County	1.7%	0.6%

June Choi, One Shoreline Board Meeting, Oct 24, 2022



# Integrating GSI



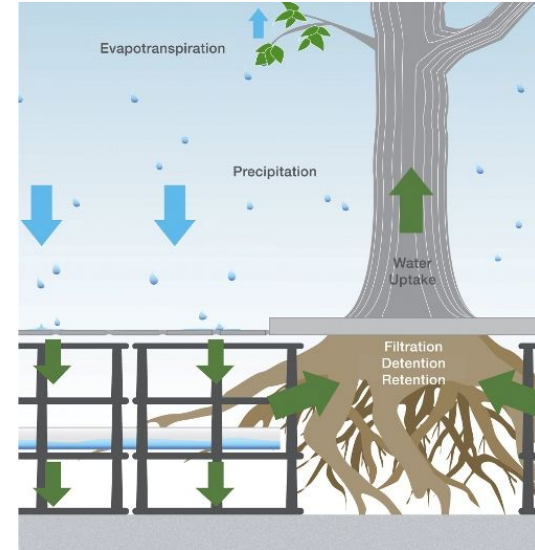
Parks

Water square in Copenhagen, Denmark; Toward a Rainproof NYC, 2022



Bike/ped

Canopy



# Questions to Consider



Photo Credit: Save The Bay

- Where are your city's flooding hotspots?
- What's the plan to protect the community?
- Where can GSI be incorporated into existing projects in a way that provides multiple benefits?
- Who is ready to collaborate with Save The Bay to move projects forward?



# Rain Gardens Case Study

Cade Cannedy  
Program Manager & Community Organizer  
[cade.cannedy@crcommunities.org](mailto:cade.cannedy@crcommunities.org)



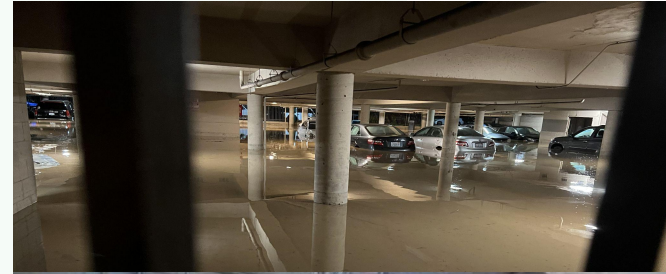
CRC is a community organization dedicated to serving communities on the frontlines of climate change by empowering community voices to implement climate solutions that bring about unity, resilience, and justice. (EPA, NFO, BH)

Cade Cannedy  
Resilient Adaptation Program Manager

[www.climatercommunities.org](http://www.climatercommunities.org)



# Flooding Impacts in EPA



# Climate Change Community Teams

---



- Composed of residents, non-profit leaders, and faith/business community
- Serve as a vehicle to form and express community priorities around climate change
- Anchor CRCs work and guide our programming/mission





# Community-Based Adaptation Assessment



## Community Adaptation Planning Project (2019)

- Infrastructure

(Build Climate Change Team)

- Capacity Building

(Trainings and workshops for Team)

- Data Gaps

(Climate Change Survey, Focus Groups)

- Increase Awareness

(Demonstration Project, Environmental Justice Academy, Earthwise Kids,

- Leadership

(Presentations to City Council, Advisory role to climate change projects e.g Dumbarton Bridge Resilience Study, Safer Bay Project)



# Prop. 68 Project Components

---



- Outreach & Education
- Workforce Development
- Installed at Private Residences
- Modeling & Scaling
- Volunteer Engagement
- Custom plant palettes

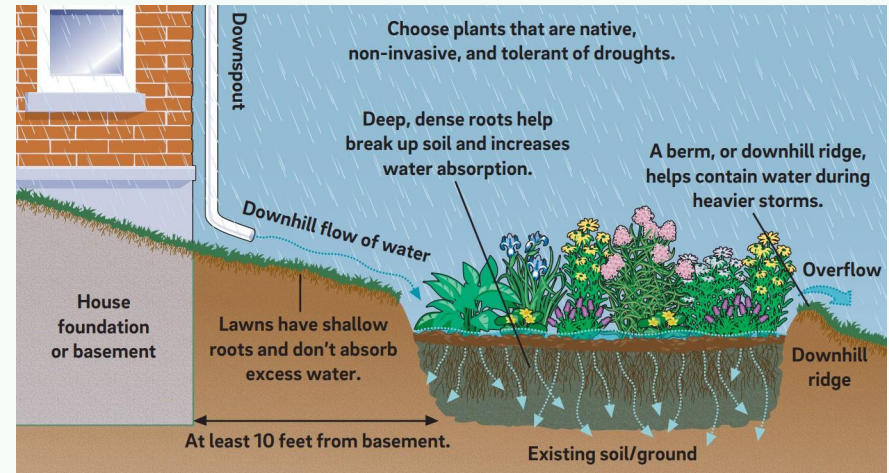


# EPA Rain Gardens for Resilience

Multi-benefit: Flood risk reduction, Food & water sovereignty, Workforce development, Carbon Sequestration, Displacement prevention

## Timeline:

- 1) Recruit Ambassadors
- 2) 10 installations by Fall 2023
- 3) 15 more by Fall 2024
- 4) White paper and scaling





# Reach out with any questions!

Violet Saena  
Executive Director  
[violet.saena@crc.acterra.org](mailto:violet.saena@crc.acterra.org)

Facebook: CRC.Climate  
Instagram: CRC\_Climate  
LinkedIn: Climate Resilient  
Communities