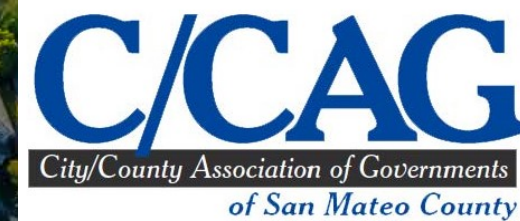


Equity Assessment and Framework Development Project

C/CAG Board Meeting – March 9, 2023





Overview

Project Updates

Equity Focus Area Mapping

Existing Conditions Analysis

Discussion and Feedback

Progress and Timeline

Phase I: Fall 2022	Phase II: Winter 2022/2023	Phase III: Spring 2023	Phase IV: Late Spring-Early Summer 2023
<ul style="list-style-type: none">• Equity definitions• Historical perspective• Connections between C/CAG's program areas and equity	<ul style="list-style-type: none">• Equity metrics & EFA mapping• Identification of equity impacts, issues, and needs connected to C/CAG's work	<ul style="list-style-type: none">• Peer review of equity practices• Existing C/CAG equity integrations• Focused delineation of C/CAG's role in equity	<ul style="list-style-type: none">• Final Reports, Policies, Statements, and Framework



Rooted and uprooted in North Fair Oaks, May 16, 2022, Don Shoecraft
Source: <https://climaterwc.com/2022/05/16/rooted-and-uprooted-in-north-fair-oaks/>

Phase II Progress: Defining & Mapping EFA's & Assessing Existing Conditions



Reviewed C/CAG's existing Equity Priority Community/demographic indicators, maps, & tools



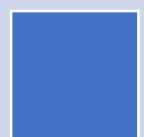
Identified C/CAG interest in consistency across agencies, as well as specificity to C/CAG's programs



Developed initial & updated indicators for geographic assessment & existing conditions analysis



Mapping strategy & draft and updated maps



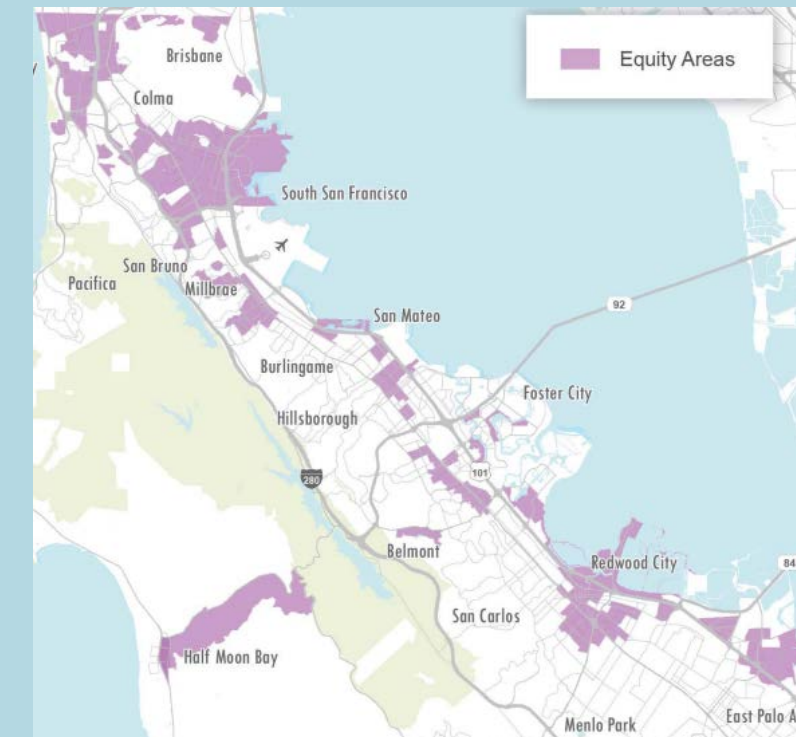
Produced draft and updated existing conditions (disparity) analysis

MTC Equity Priority Communities Map

Source: https://mtc.ca.gov/sites/default/files/Equity_Priority_Communities.pdf



Reimagine SamTrans
Source: <https://www.samtrans.com/about-samtrans/reimagine-samtrans>



Mapping & Existing Conditions Input

- Make applicable to C/CAG's diverse program areas
- Establish a process and timeline for updating C/CAG's Equity Focus Areas (EFA's) on a recurring basis with the latest data and potentially with new indicators of interest.
- Additional demographic indicators considered:
 - Undocumented people
 - Linguistic isolation
 - Unbanked
 - Unhoused
 - Overcrowding
 - Low-income seniors
 - Single parent households



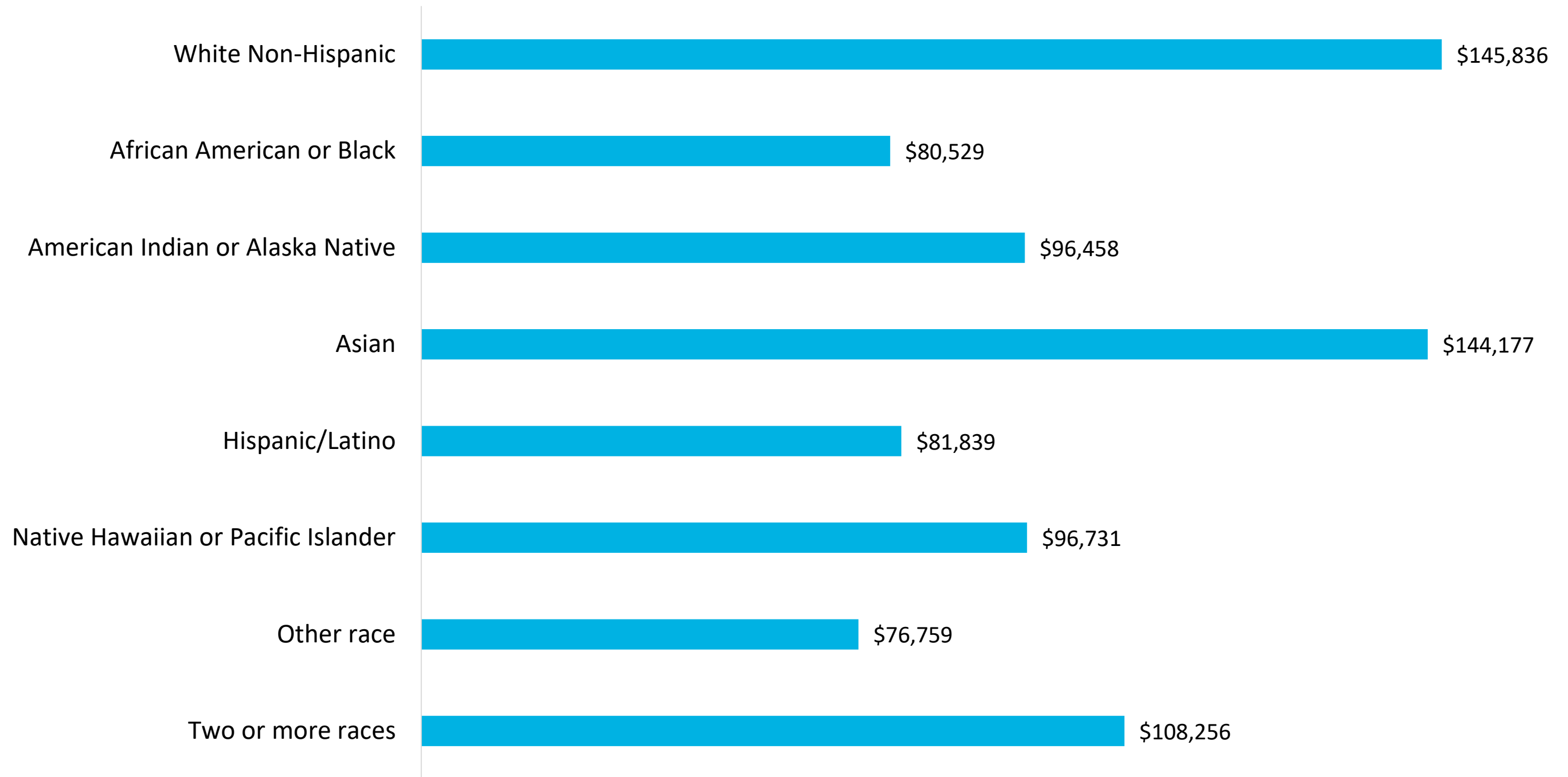
"A view from the St. Francis neighborhood in Daly City. (Sebastian Miño-Bucheli/KQED)"
Source: <https://www.kqed.org/news/11883382/in-daly-city-the-bayanihan-spirit-is-alive-and-well>

Existing Conditions Analysis

Median Household Income by Race/Ethnicity

San Mateo County

2016-2020 American Community Survey



Means of transportation to work by **race/ethnicity** in San Mateo County

2016-2020 American Community Survey

	Drive alone	Carpool	Public Transit	Walk	Bike or other	Work from home
White Non-Hispanic	69%	6%	7%	2%	4%	13%
African American or Black	61%	11%	12%	5%	4%	7%
American Indian or Alaska Native	60%	21%	6%	2%	7%	5%
Asian	60%	12%	14%	2%	2%	10%
Hispanic/Latino	65%	14%	10%	4%	3%	5%
Native Hawaiian or Pacific Islander	72%	12%	6%	3%	3%	5%
Other race	65%	13%	11%	4%	3%	4%
Two or more races	64%	8%	10%	3%	4%	11%

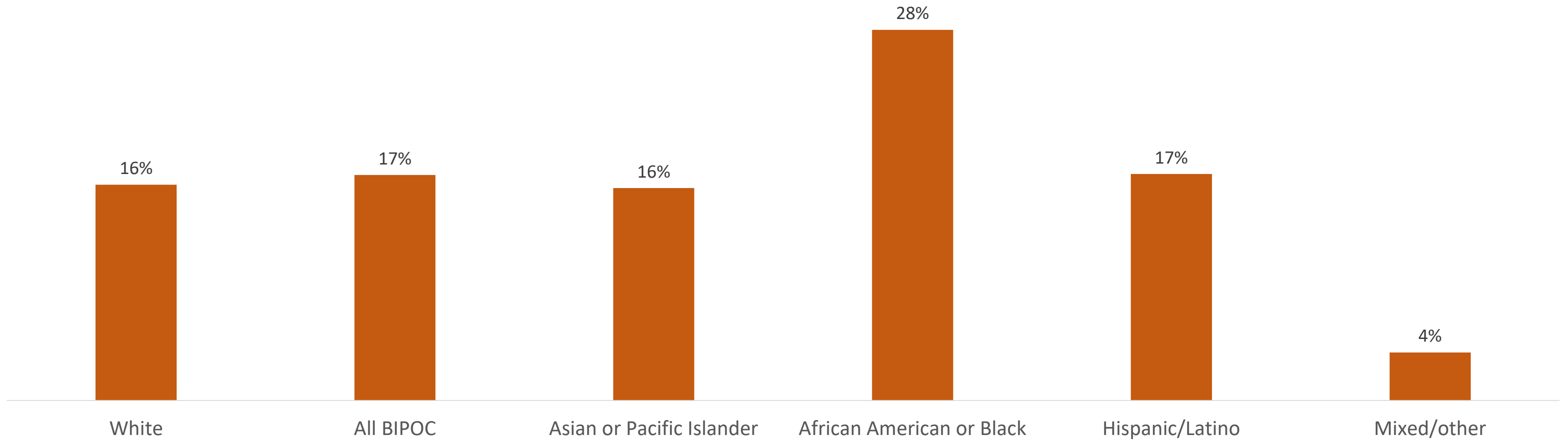
Means of transportation to work by **household income** in San Mateo County
2016-2020 American Community Survey

	Drive alone	Carpool	Public Transit	Walk	Bike or other	Work from home
Under \$25K	59%	13%	11%	5%	4%	8%
\$25K-\$50K	65%	13%	10%	3%	3%	6%
\$50K-\$75K	69%	9%	9%	2%	3%	7%
Over \$75K	67%	7%	10%	1%	3%	12%

Percentage increase in average commute times by race/ethnicity, 2010-2019

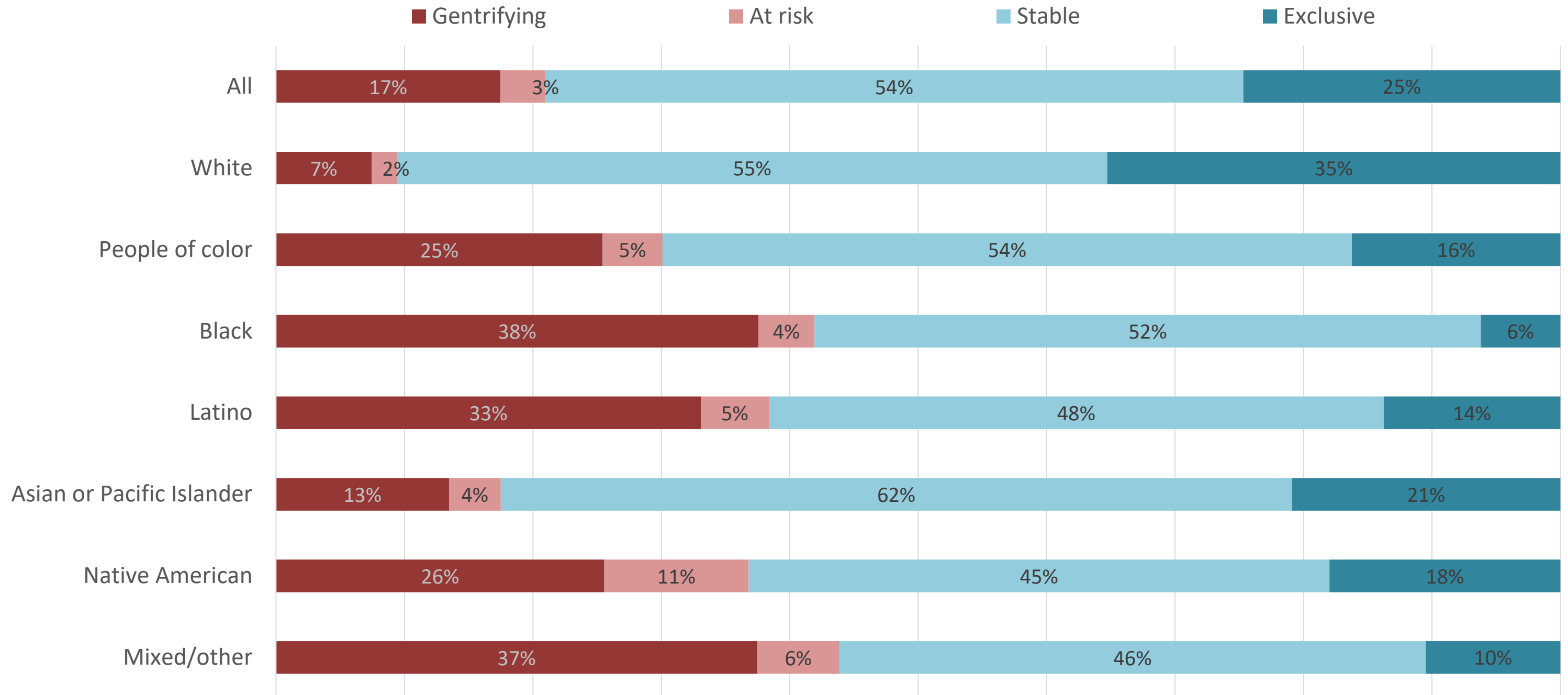
San Mateo County

National Equity Atlas



Gentrification Risk by Race (pct. of households)

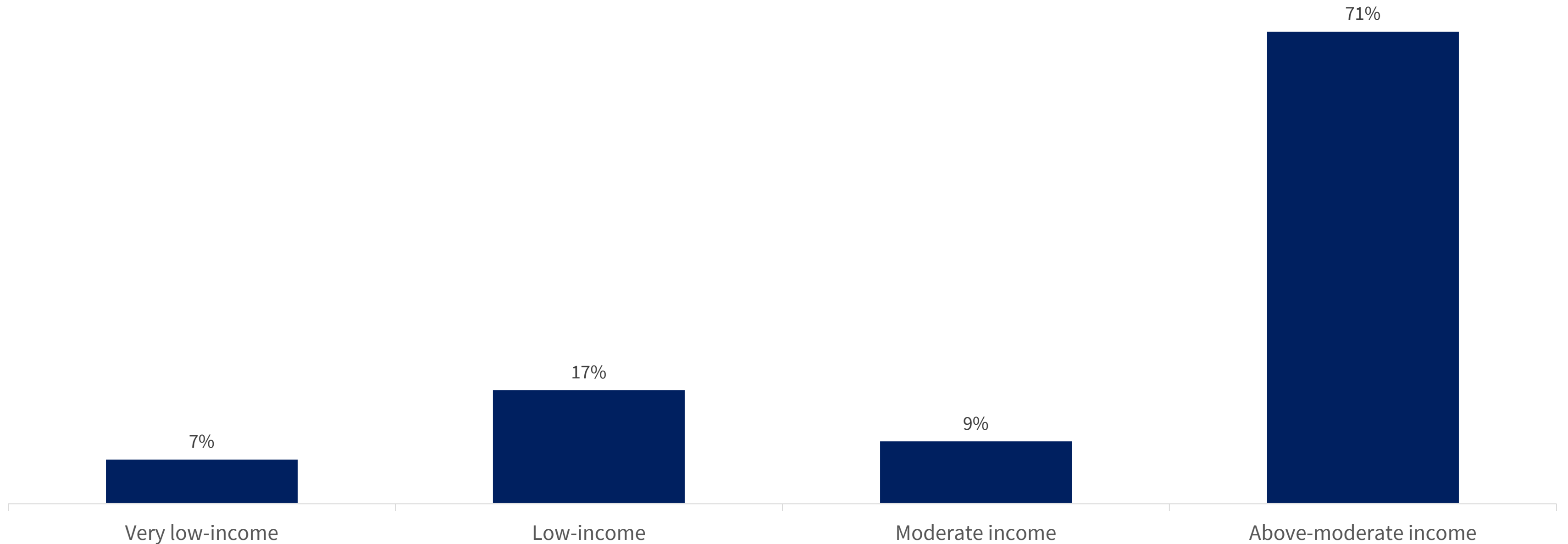
San Mateo County



Source: UC Berkeley Urban Displacement Project; American Community Survey | Bay Area Equity Atlas

Affordable Housing Production in San Mateo County, 2015-2017

(Units created as a share of units needed during 2015-2023 cycle)

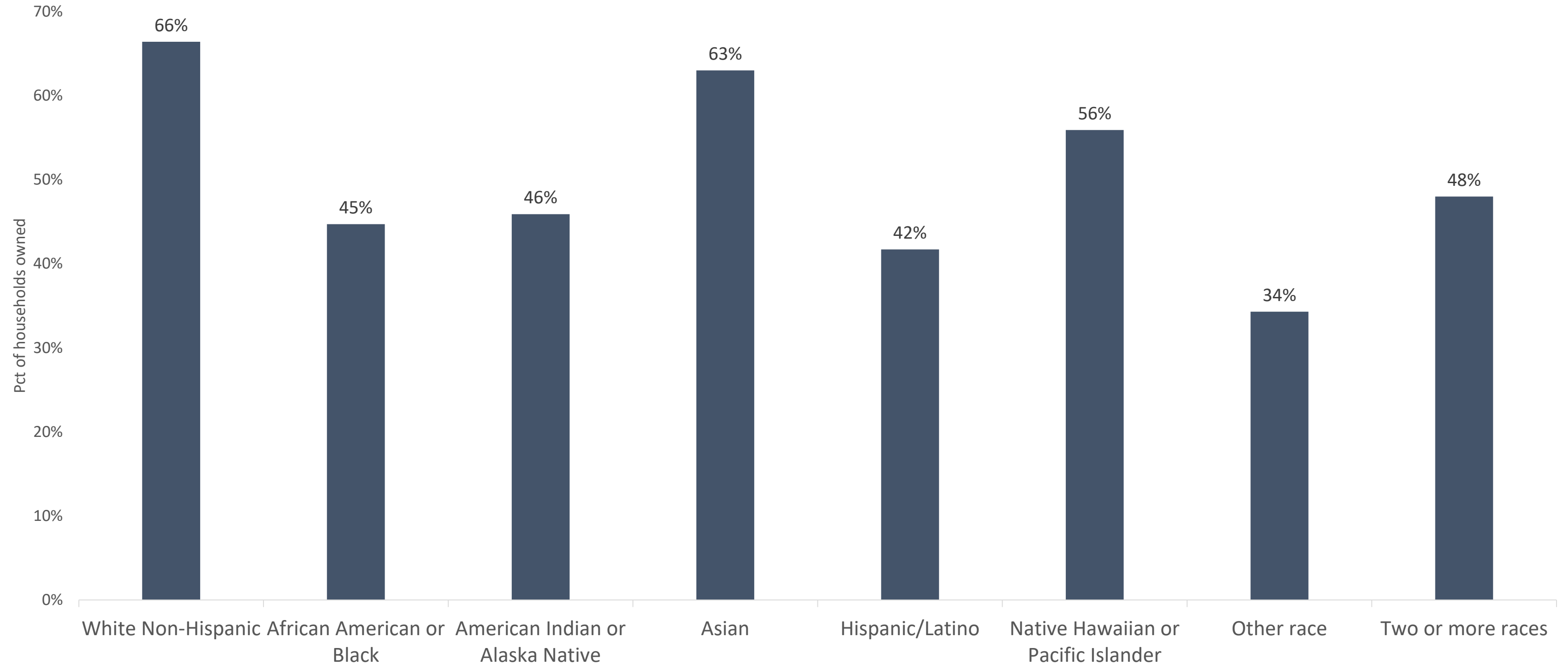


Source: Bay Area Equity Atlas | Bay Area Regional Housing Needs Allocation

Home Ownership by Race/Ethnicity

San Mateo County

2016-2020 American Community Survey



Equity Indicator Mapping

✓ = Indicator included in corresponding agency's map

	C/CAG CBPP Equity Focus Areas*	SamTrans Equity Priority Areas	MTC Equity Priority Communities	CalEnviro-Screen	USDOT
Zero Vehicle Households	✓	✓	✓		
Low-income Population	✓	✓	✓	✓	✓
People of Color	✓	✓	✓		
Housing cost burdened	✓		✓	✓	
Transportation cost burdened	✓				
Unemployment				✓	
Limited English proficiency			✓	✓	✓
Low education levels				✓	✓
Poor health outcomes				✓	✓
Environmental disparities				✓	✓
Climate change resilience disadvantage					✓
Lack of local jobs					✓
High inequality					✓
Seniors			✓		
People with disabilities			✓		✓
Single parent households			✓		

*Comprehensive Bicycle and Pedestrian Plan

C/CAG Comprehensive Bicycle and Pedestrian Plan (CBPP) Equity Focus Areas

Equity Focus Area

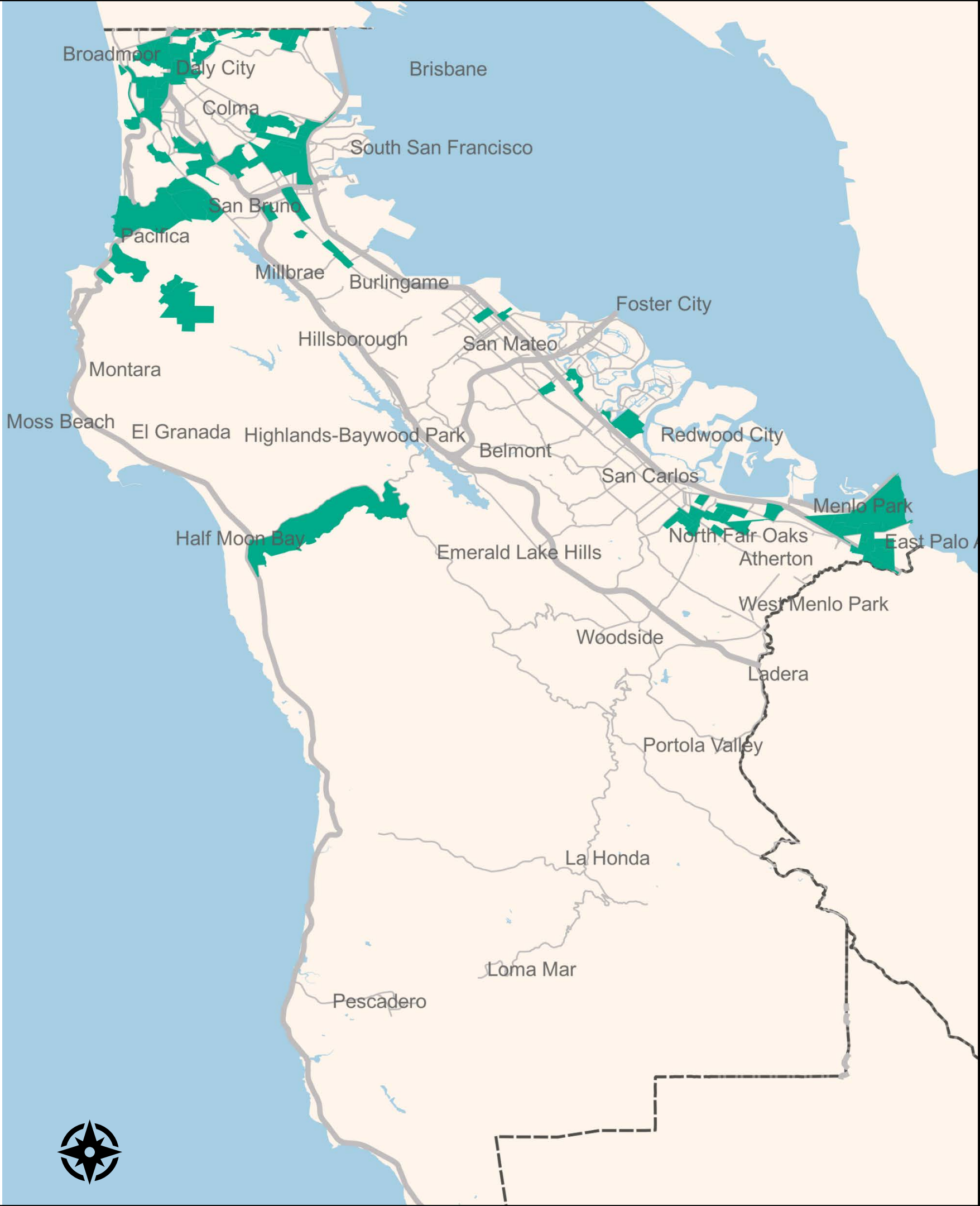
Freeway

Arterial street

Indicators

- Low-income households
- People of color
- Zero-vehicle households
- Transportation and housing cost-burdened households

Source: 2014-2018 American Community Survey



SamTrans Equity Priority Areas

Equity Priority Area

Freeway

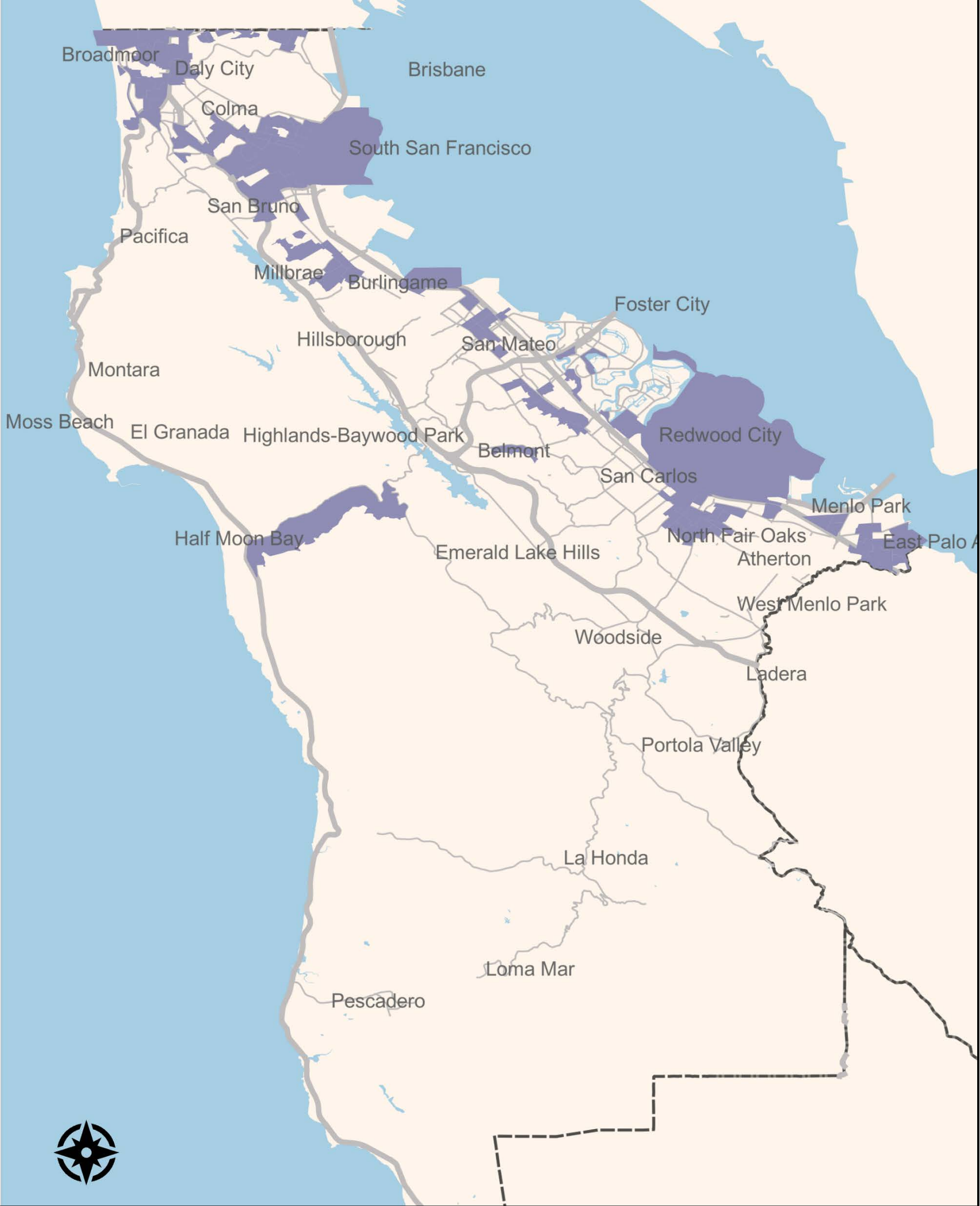
Arterial street

Indicators

• Low-income households

• People of color

• Zero-vehicle households



MTC Equity Priority Communities

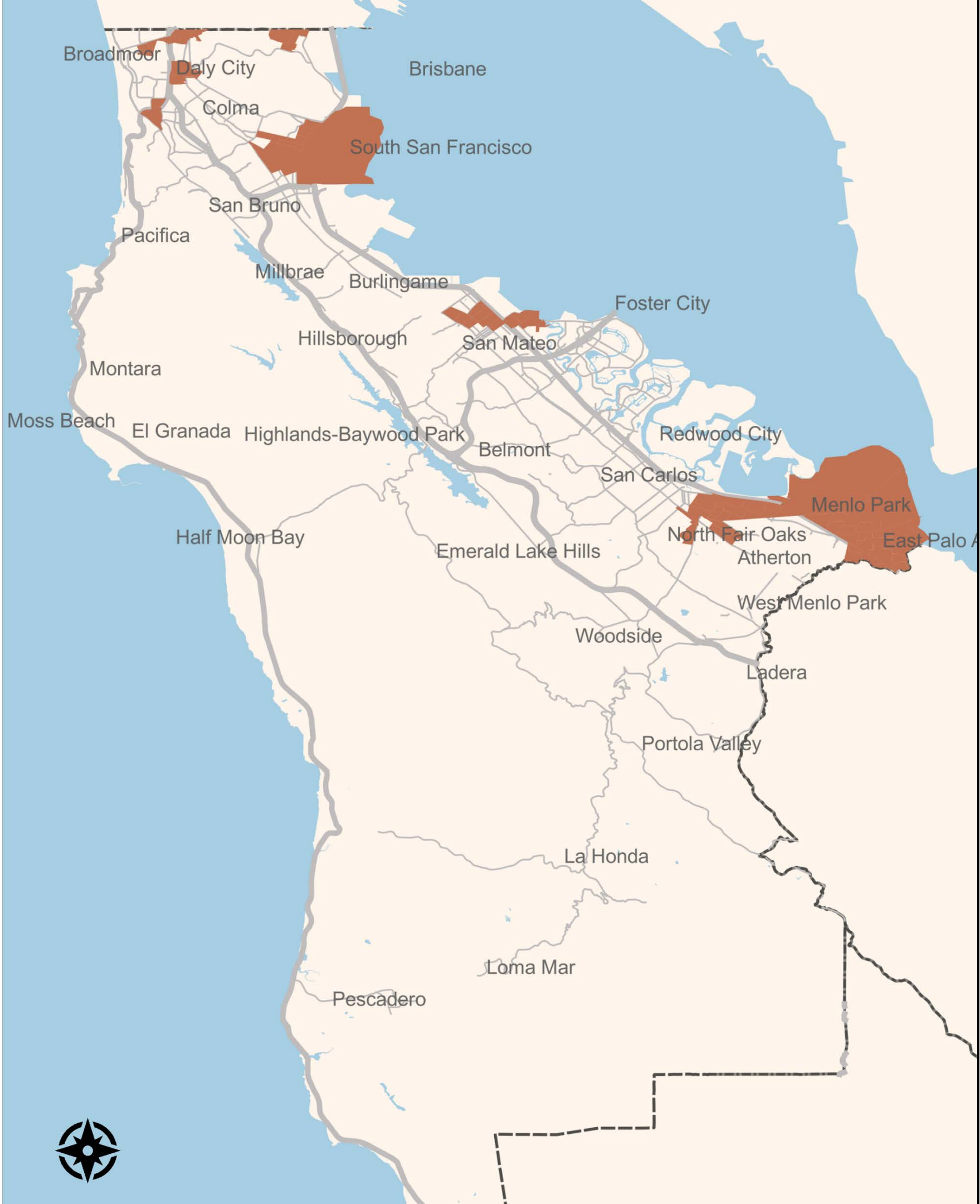
Equity Priority Community

Freeway

Arterial street

Indicators

- Low-income households
- People of color
- Zero-vehicle households
- Limited English Proficiency
- Single Parent Families
- People with a Disability
- Rent-burdened Households



C/CAG CBPP Equity Focus Areas & Limited English Proficiency

Equity Focus Area

High % limited English proficient households (above 23%)

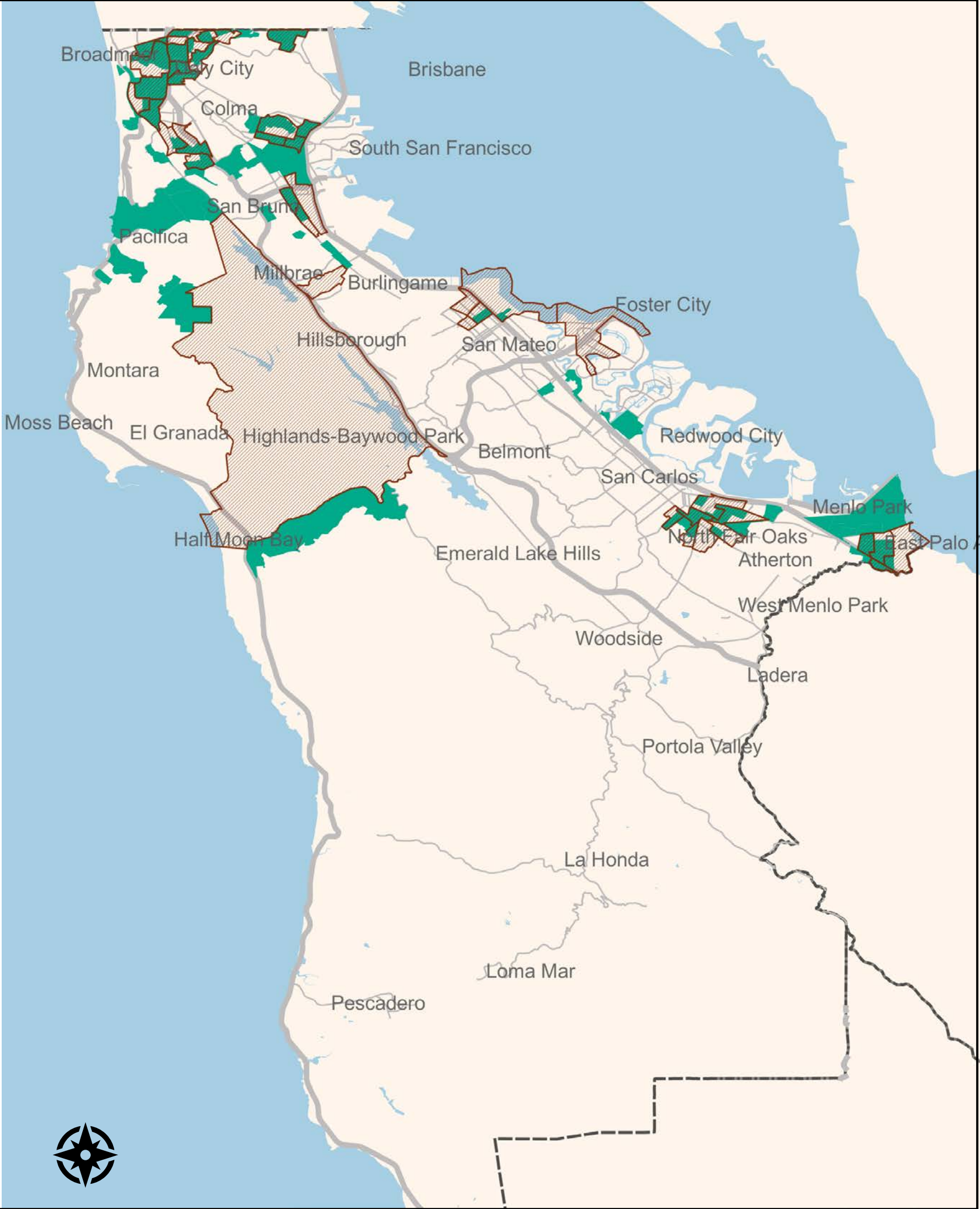
Freeway

Arterial street

Equity Focus Area Indicators

- Low-income households
- People of color
- Zero-vehicle households
- Transportation and housing cost-burdened households

Sources: 2014-2018 American Community Survey, 2017-2021 American Community Survey



C/CAG CBPP Equity Focus Areas & Single Parent Households

Equity Focus Area

High % Single Parent Households (above 11%)

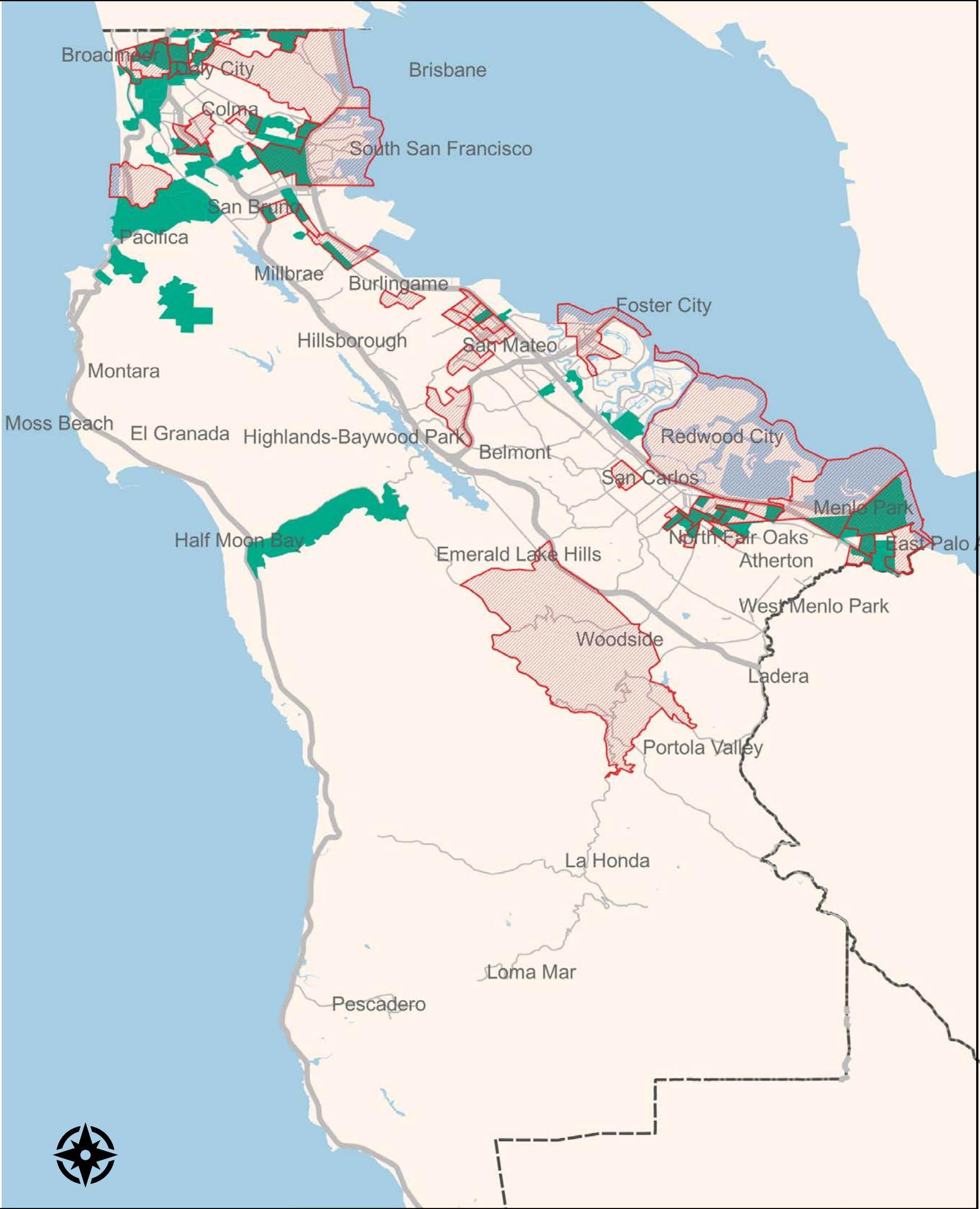
Freeway

Arterial street

Equity Focus Area Indicators

- Low-income households
- People of color
- Zero-vehicle households
- Transportation and housing cost-burdened households

Sources: 2014-2018 American Community Survey, 2017-2021 American Community Survey



C/CAG CBPP Equity Focus Areas & Seniors in Low-income Areas

Equity Focus Area

High % Seniors in low-income tracts (above 19%)

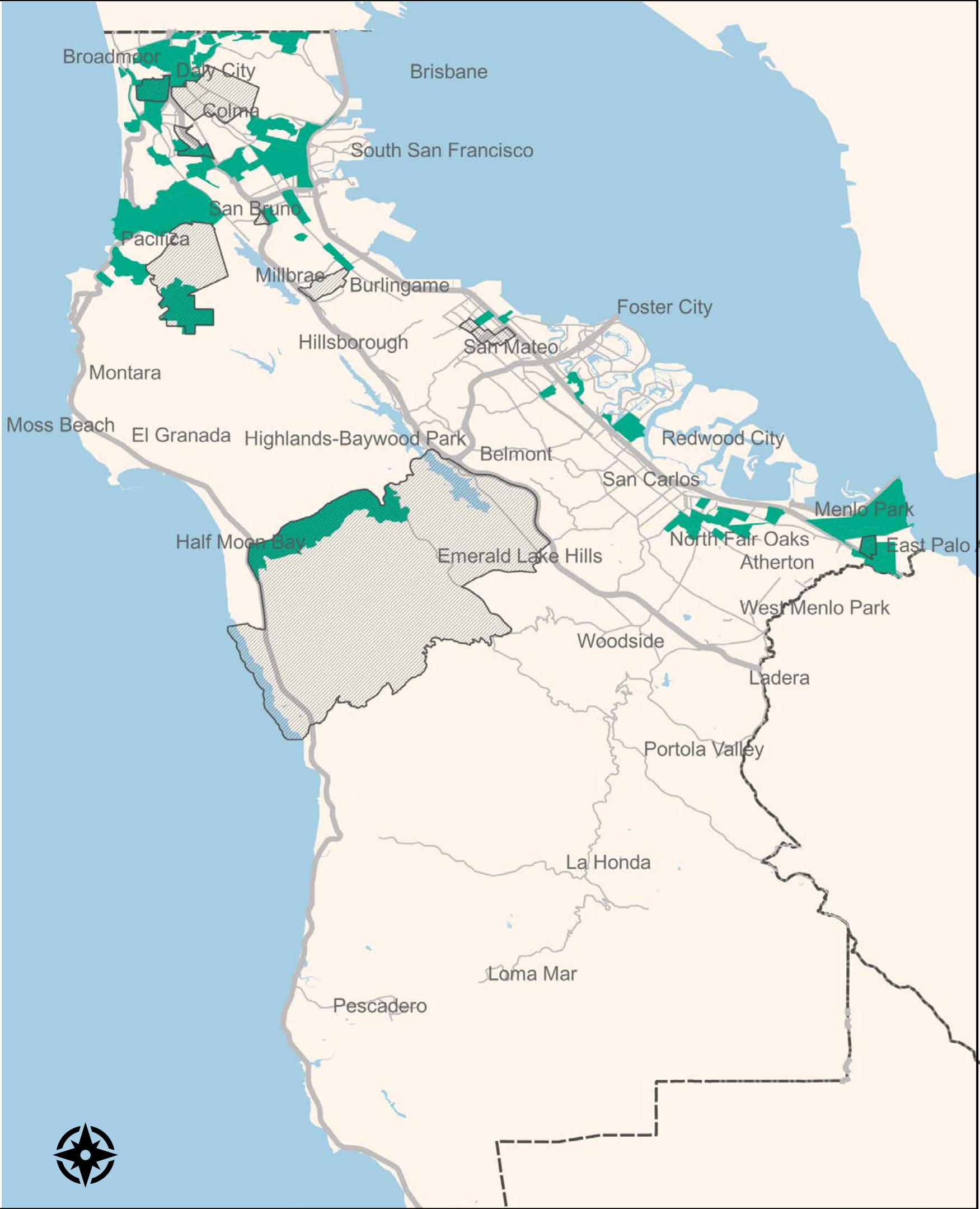
Freeway

Arterial street

Equity Focus Area Indicators

- Low-income households
- People of color
- Zero-vehicle households
- Transportation and housing cost-burdened households

Sources: 2014-2018 American Community Survey, 2017-2021 American Community Survey



C/CAG CBPP Equity Focus Areas & Gentrification Risk

Equity Focus Area

Gentrification & displacement risk tract

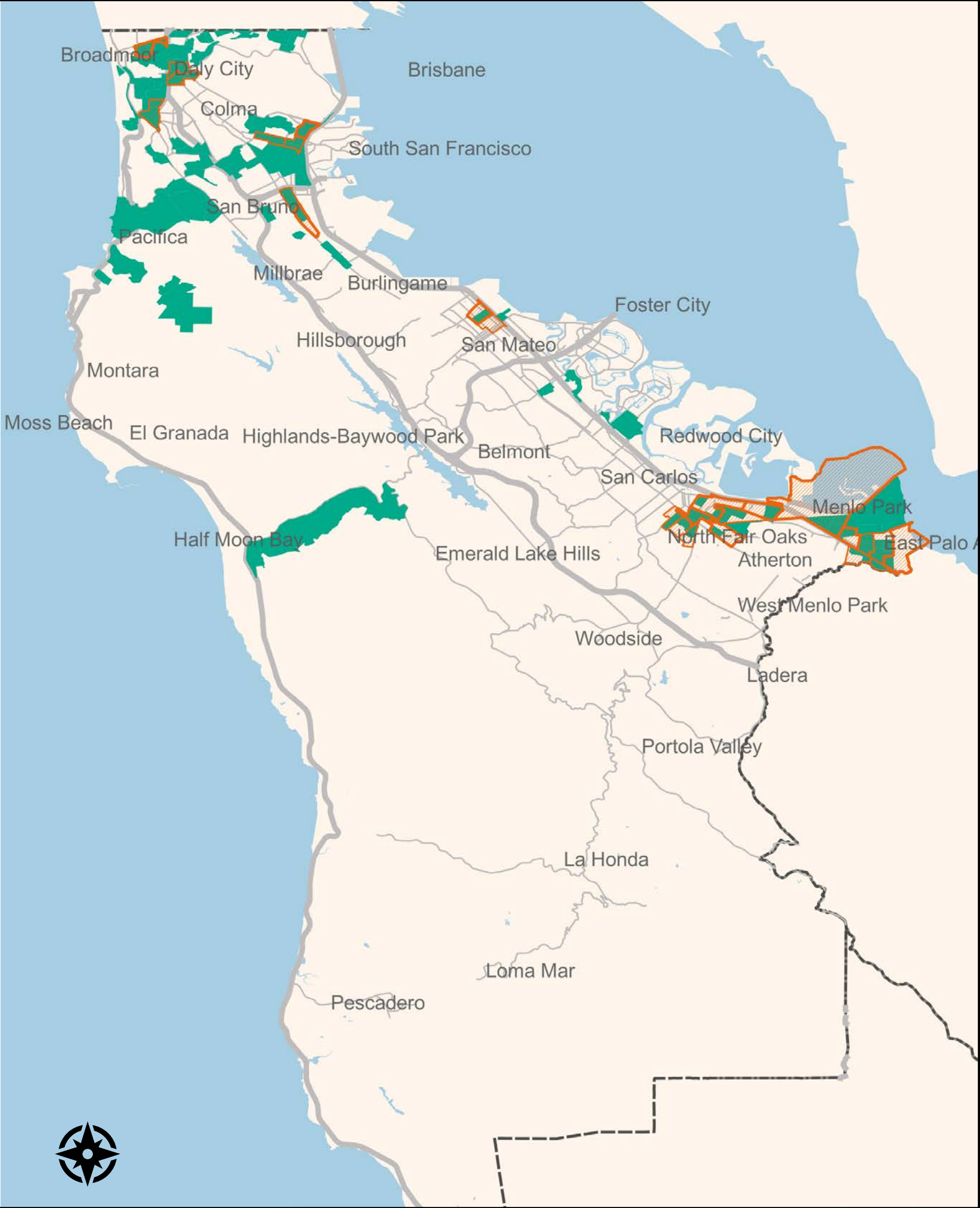
Freeway

Arterial street

Equity Focus Area Indicators

- Low-income households
- People of color
- Zero-vehicle households
- Transportation and housing cost-burdened households

Sources: 2014-2018 American Community Survey, Urban Displacement Project California Estimated Displacement Risk Model (2015-2019)



C/CAG CBPP Equity Focus Areas & Climate/Environment

Equity Focus Area

CalEnviroScreen Top 25% tract

Freeway

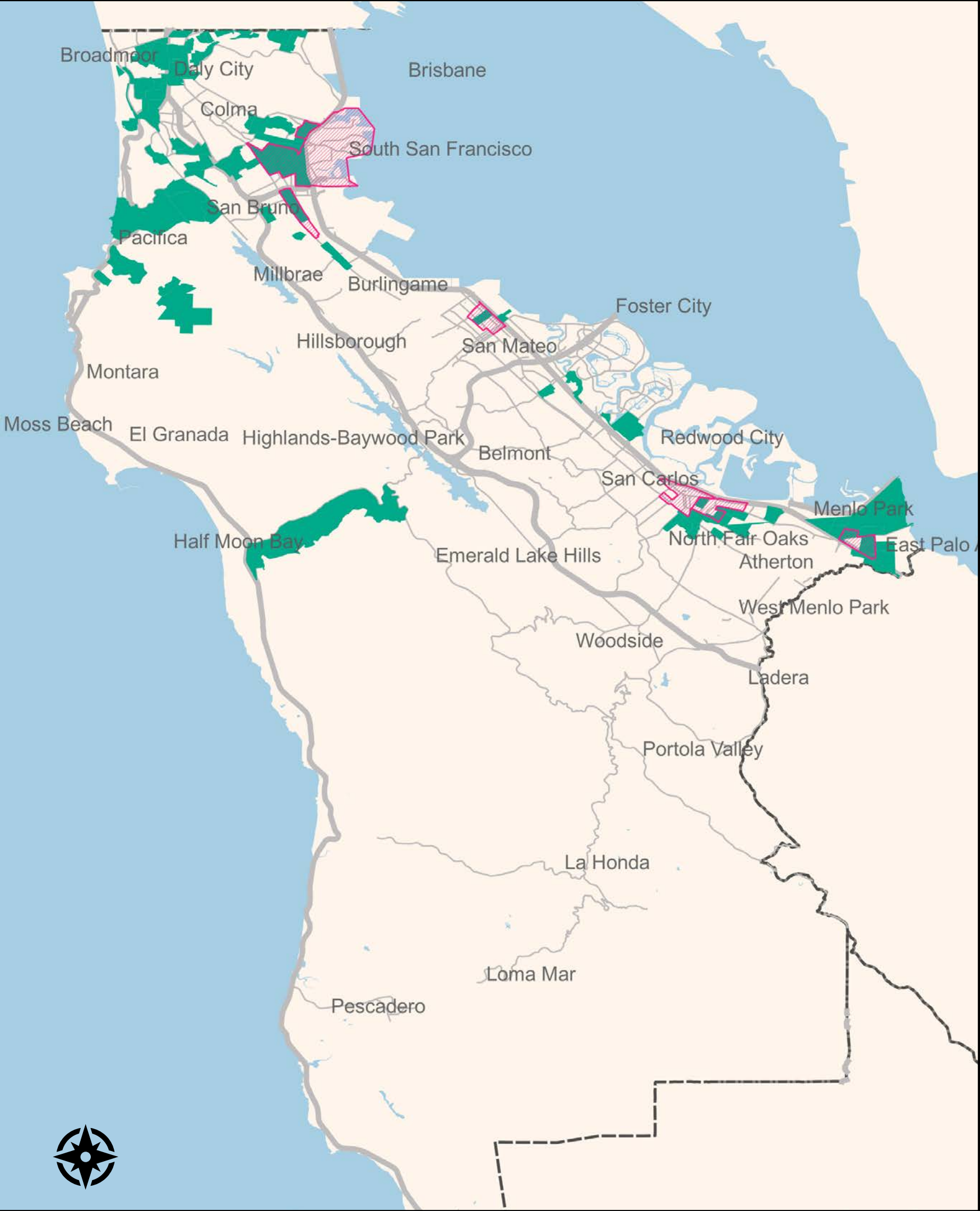
Arterial street

Equity Focus Area Indicators

- Low-income households
- People of color
- Zero-vehicle households
- Transportation and housing cost-burdened households

Sources: 2014-2018 American Community Survey,

CalEnviroScreen 4.0



C/CAG CBPP Equity Focus Areas & Climate/Environment

Equity Focus Area

Climate & EJ Community

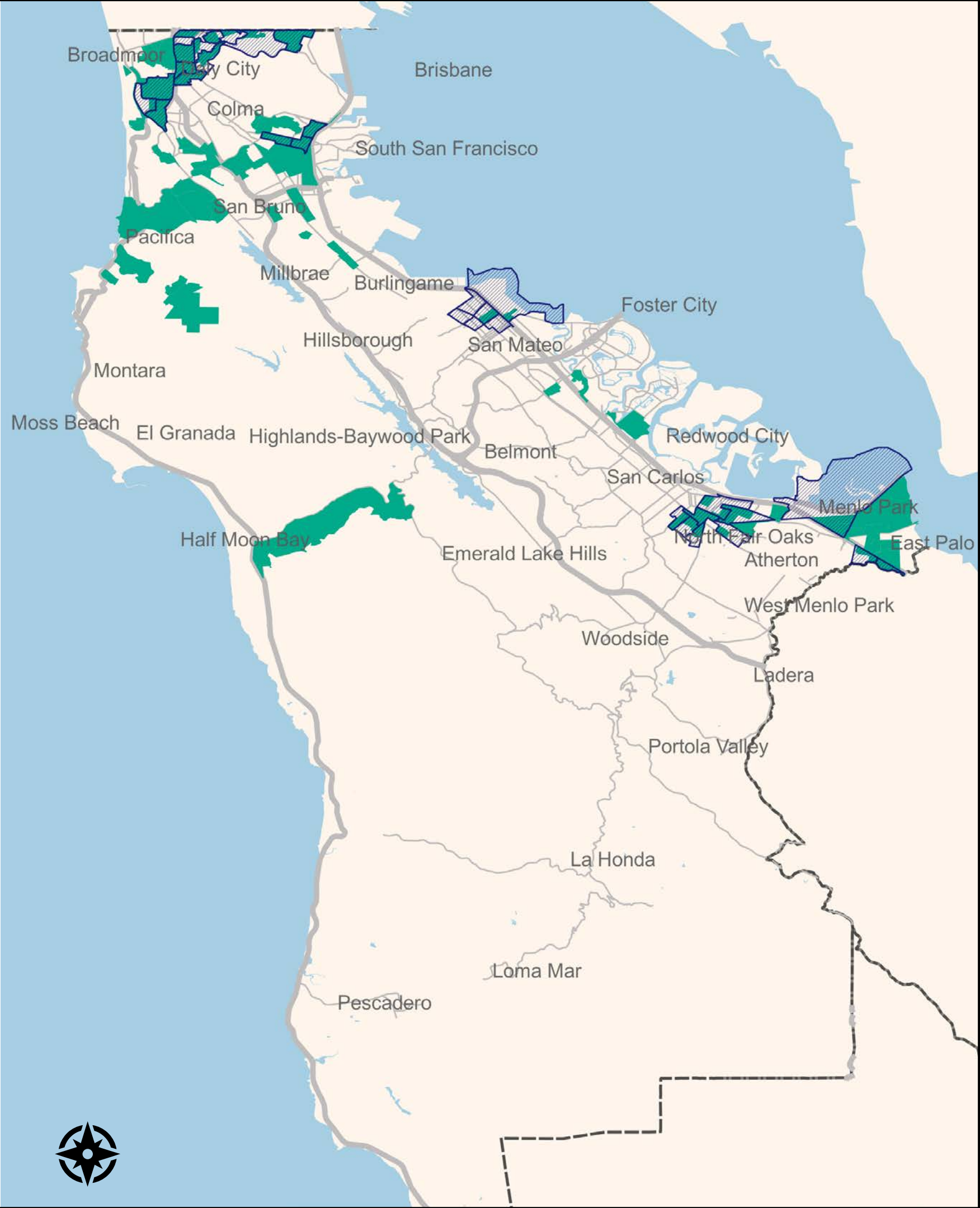
Freeway

Arterial street

Equity Focus Area Indicators

- Low-income households
- People of color
- Zero-vehicle households
- Transportation and housing cost-burdened households

Sources: 2014-2018 American Community Survey, White House Council on Environmental Quality Climate & Economic Justice Screening Tool



Draft Recommendations

1. Create new baseline, non-program specific Equity Focus Areas using these demographic indicators:
 - People of color
 - Low-income population
 - Limited English proficient population
 - Single parent households
 - Seniors
2. Adapt to program areas by adding relevant indicators on top of baseline (i.e. transportation, housing, climate)
 - Work with SamTrans to align on Transportation Equity Focus Areas
3. Create a dashboard to track conditions over time

moving to Discussion and Feedback ...

Jake Warr

Espousal Strategies- jake@espousalstrategies.com

Chris Lepe

Mariposa Planning Solutions - Chris@mariposaplan.com

Kim Springer

C/CAG - kspringer@smcgov.org

