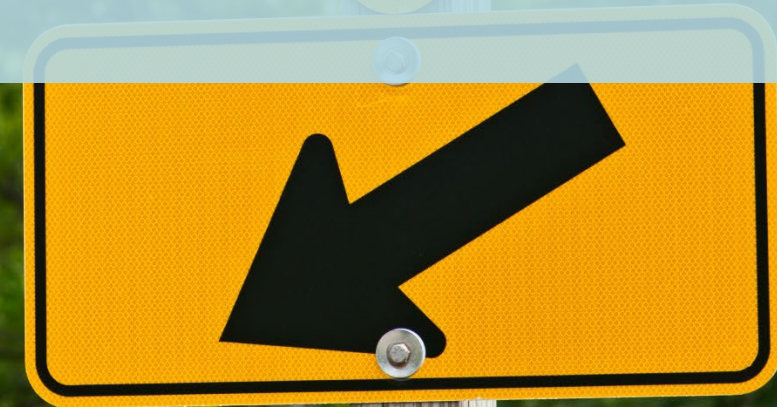


San Mateo Countywide Local Roadway Safety Plan

Community Kickoff Meeting
August 10, 2023, 6 pm



Virtual Meeting (Webinar) Guidelines

Welcome

- Meeting Ground Rules
- This meeting is being recorded
- Closed Captioning is available



Questions

- To ask a question:
 - Click on the Q&A Icon
 - Type into the text box
 - For individuals joining by phone, please dial *9 to "raise your hand." We will unmute you to ask your question verbally.
- All perspectives are welcome
- Everyone will have a chance to participate
- Be respectful of other opinions



Meeting Agenda

1. Introduction
2. Project purpose and scope
3. Data Analysis and Findings
4. Your role in advancing safety
5. Project Schedule/Next steps

Introductions

- **C/CAG**

- Jeff Lacap, Transportation Systems Coordinator
- Eva Gaye, Transportation Program Specialist

- **Consultant Team**

- Mike Alston, Project Manager (Kittelson)
- Divya Gandhi, Deputy Project Manager (Kittelson)
- Stacey Miller, Outreach Lead (Circlepoint)
- Ivy Morrison, Outreach Lead (Circlepoint)
- Monica Dwight, Outreach Coordinator (Circlepoint)
- Nicole Schmidt, Outreach Coordinator (Circlepoint)

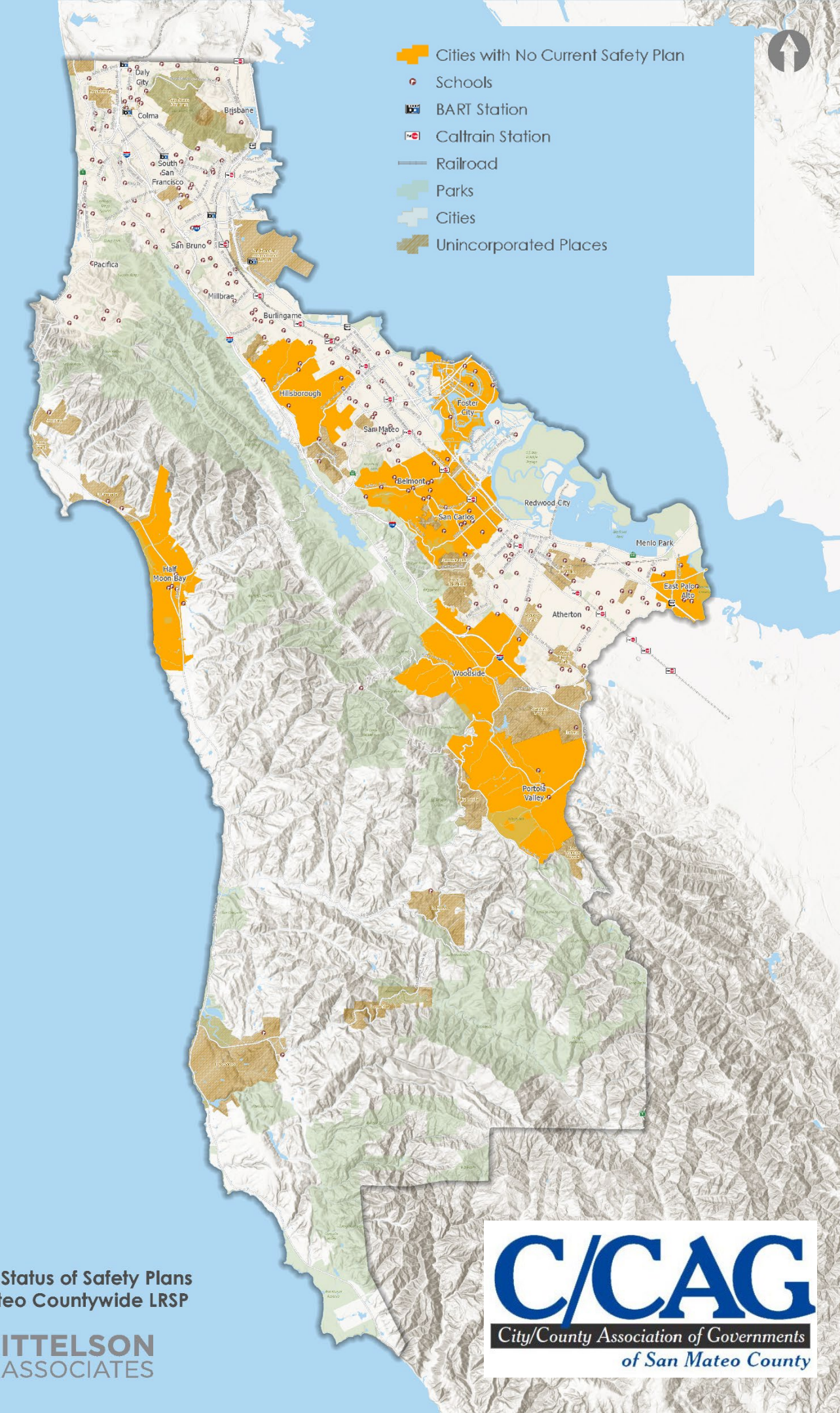


Meeting Agenda

1. Introduction
- 2. Project purpose and scope**
3. Data Analysis and Findings
4. Your role in advancing safety
5. Project Schedule/Next steps

Purpose of Countywide Local Roadway Safety Plan (LRSP)

- Purpose
 - Set a regionwide vision to advance roadway safety, while **also developing LRSPs for local agencies without one**
 - Position all local agencies for grant funding
- **Nine** jurisdictions do not have an existing or ongoing safety plan:
 - Half Moon Bay
 - Brisbane
 - Hillsborough
 - Foster City
 - Belmont
 - San Carlos
 - Woodside
 - Portola Valley
 - East Palo Alto



Advisory Group

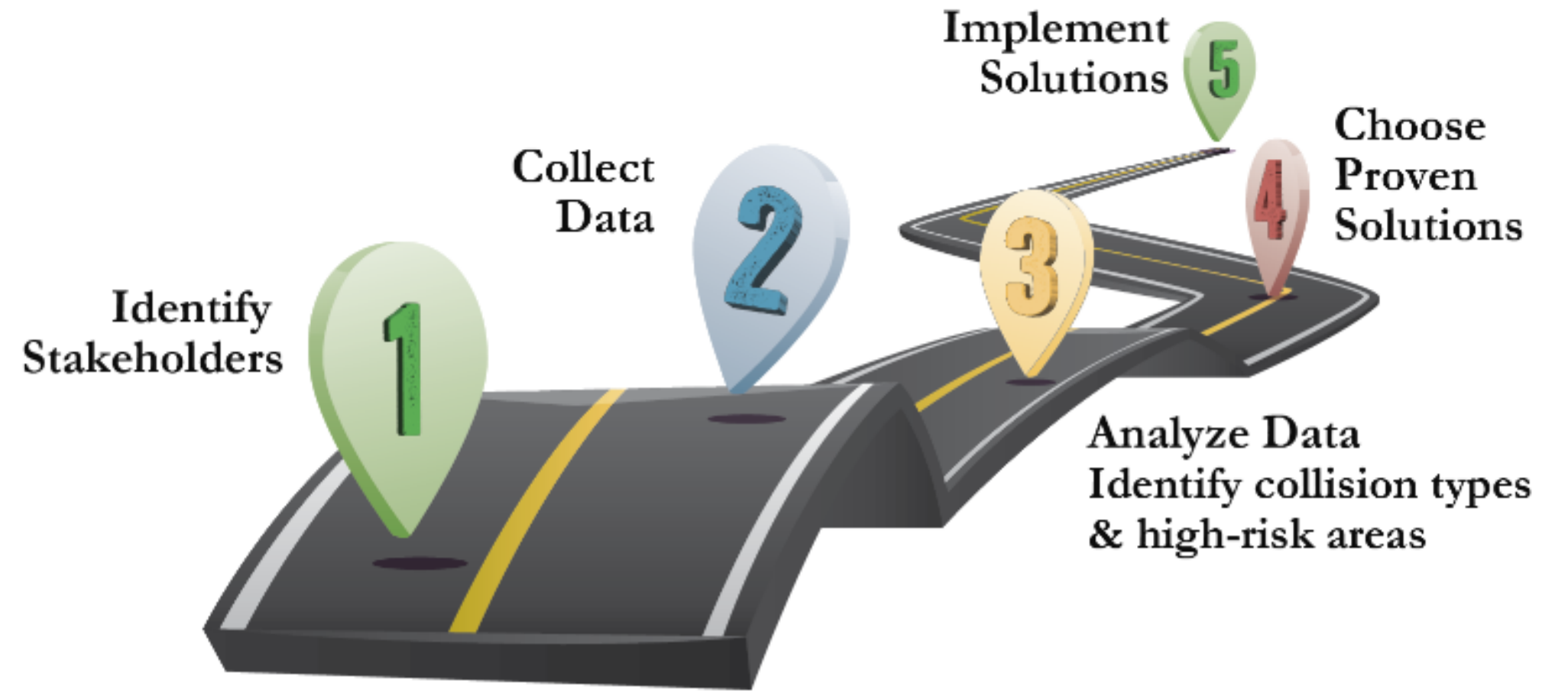
- Representation from:
 - 21 San Mateo County jurisdictions
 - Partner organizations



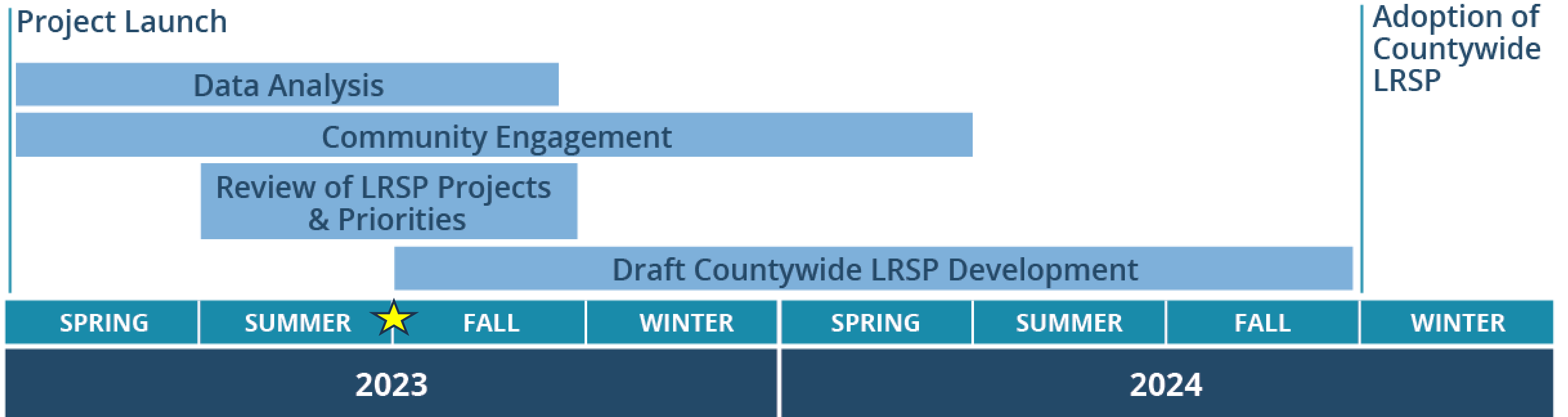
What is a Local Roadway Safety Plan?

A **data-driven** safety action plan that will produce:

- Countywide crash risk trends and emphasis areas
- Prioritized project locations for safety improvement
- Engineering recommendations
- Policy/program recommendations



Project Schedule



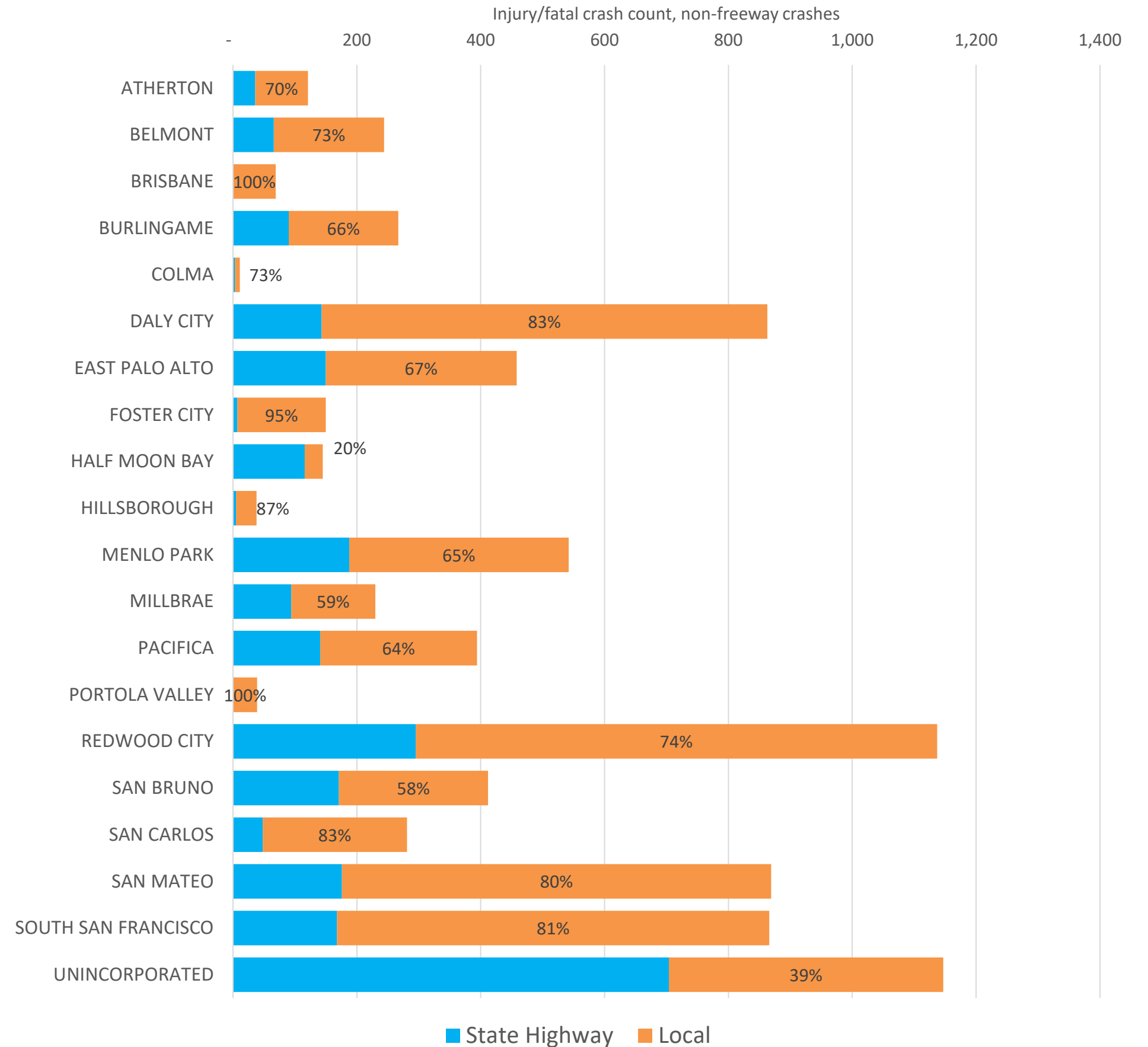
Meeting Agenda

1. Introduction
2. Project purpose and scope
- 3. Data Analysis and Findings**
4. Your role in advancing safety
5. Project Schedule/Next steps

Crash Analysis and Findings

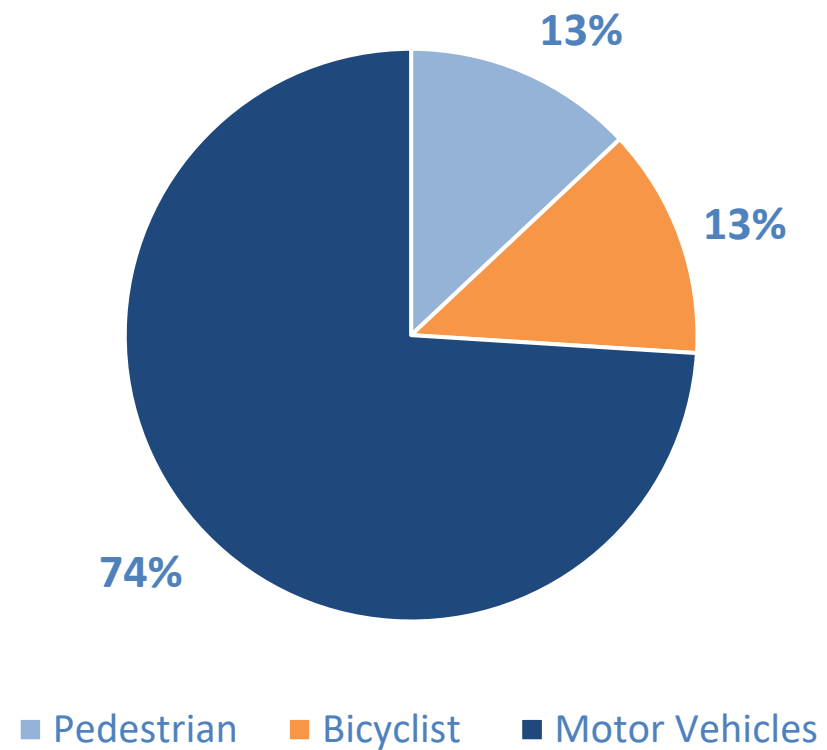
- Analysis period: 2018-2022
- Total crashes: 8,468 (~1,700/year)
 - 43% State Highway Crashes
 - 57% Local Roadway Crashes
- State highway roadways include:
 - Highway 1, El Camino Real, University Avenue, Willow Road, Highway 35, Highway 84
 - Many cross jurisdictional boundaries
- Near-misses and unreported crashes are not been captured in these data.

Injury/Fatal Crashes by Jurisdiction, 2018-2022

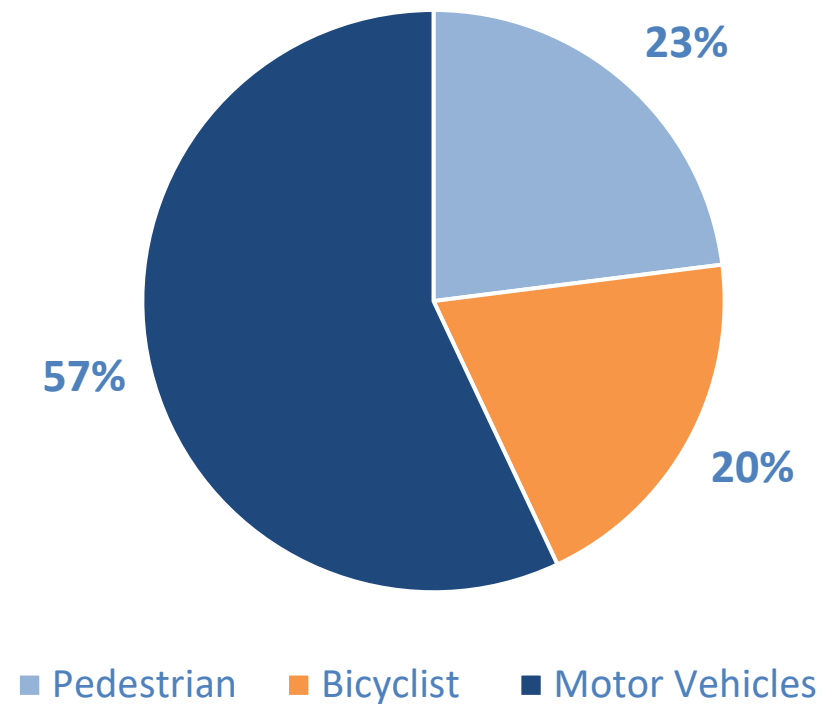


Crash Analysis and Findings

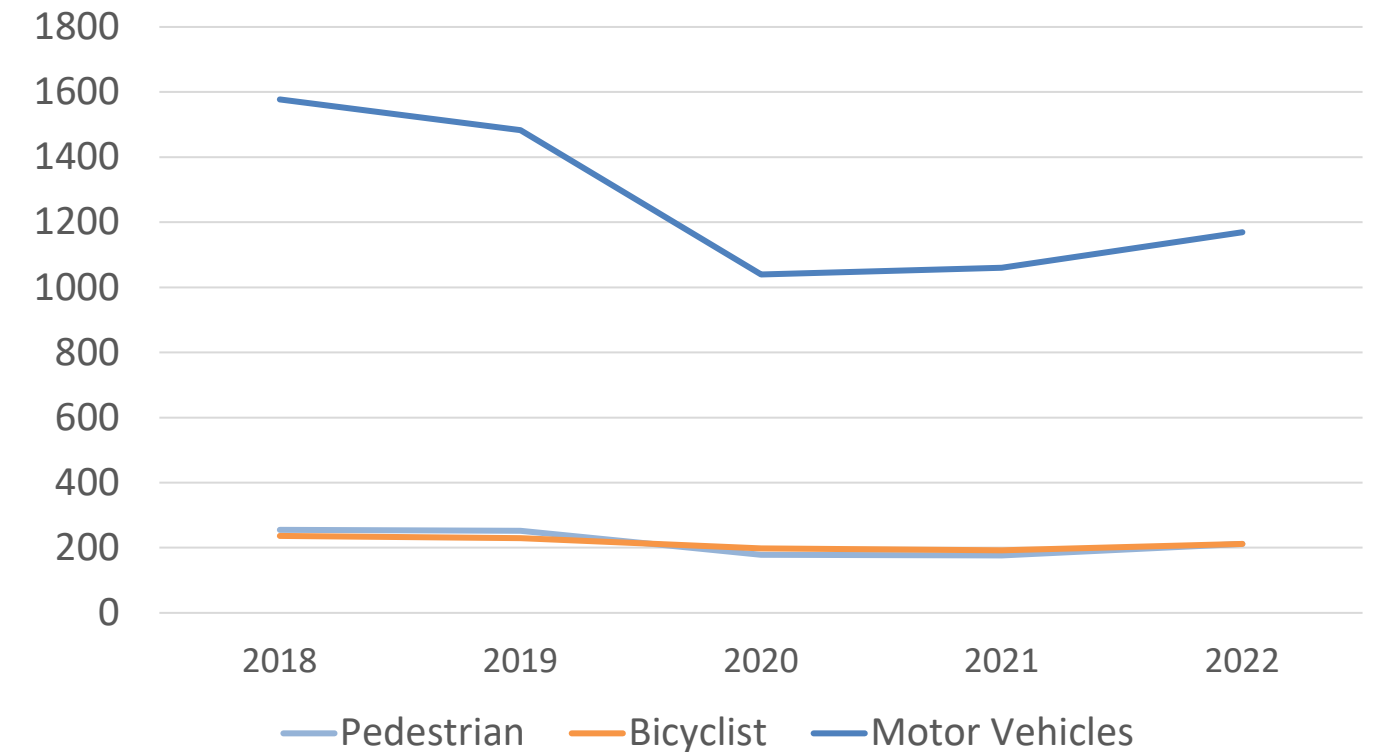
Crashes by Mode, All Crashes



Crashes by Mode, Fatal and Severe Injury Crashes



Crashes by Mode, per year



Pedestrian Findings

- Since pandemic (2020):
 - Reduction in the number of crashes
 - Increase in severity
- High-severity pedestrian crashes have occurred:
 - In low-lighting conditions
 - Intersections near a transit stop
 - At unsignalized intersections
 - High-speed roads (45 mph+)
- Identified 98 miles of pedestrian high injury network

Identified top locations → See Map



Bicyclist Findings

- During the peak pandemic years (2020-2021):
 - Reduction in the number of crashes
 - Increase in severity
- High-severity bicyclist crashes have occurred:
 - At unsignalized intersections
 - Violations include automobile right of way, speeding, improper turning
- Identified 96 miles of bicyclist high injury network

Identified top locations → See Map



Bicyclist High Injury Network (HIN)
San Mateo County, CA

KITTELSON
& ASSOCIATES

Motor Vehicle Findings

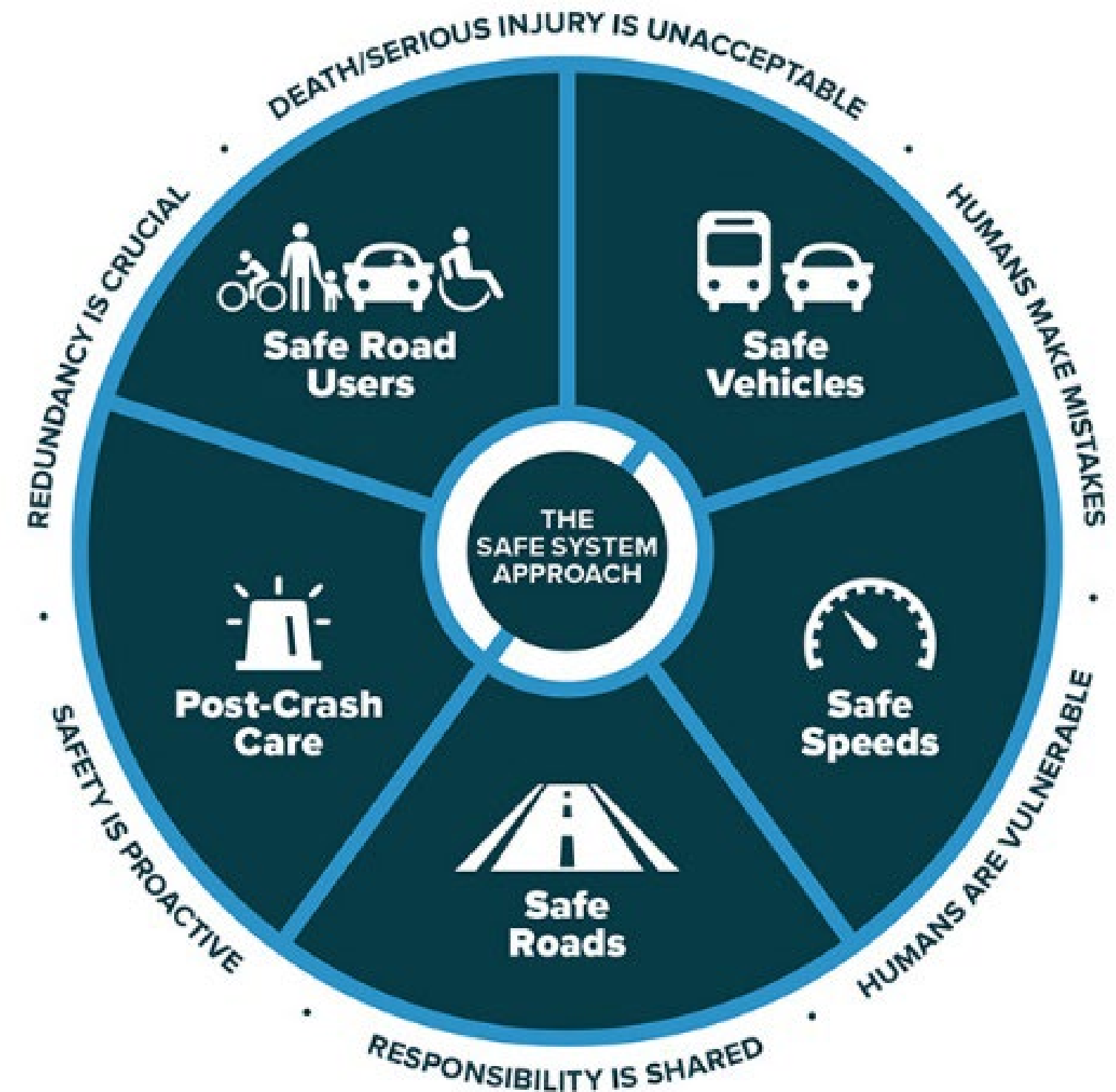
- During the peak pandemic years (2020-2021):
 - Reduction in the number of crashes
 - Decrease in crash severity
- High-severity motor vehicle crashes have occurred during:
 - Low-lighting conditions
 - At segment or mid-block locations
 - At unsignalized intersections
 - High-speed roads (40 mph+)
- Identified 283 miles of motor vehicles high injury network

Identified top locations → See Map



Actionable Recommendations - Safe System Aligned

- Recommendations will be developed in alignment with the Safe System Approach
- Safe Speeds and Safe Roads >> Engineering Countermeasures
- Safe Road User >> Policy/Program Recommendations



Source: FHWA.

Engineering Countermeasures

- Target treatments to match fatal/severe injury patterns
- Can be applied “systemically” – in locations with high risk even if crashes haven’t occurred
- Some examples at right



Install Raised Medians



Separated Bike Lanes



Pedestrian Refuge Island



Rectangular Rapid Flashing Beacon (RRFB's)

Policy/Program Measures

- Recommend measures and identify support to implement
- Target fatal/severe injury patterns
- Examples include:
 - Public service announcements regarding dangers of red light running and stop sign violations
 - Targeted education campaigns for distracted driving
 - Safe Routes to School



Meeting Agenda

1. Introduction
2. Project purpose and scope
3. Data Analysis and Findings
- 4. Your role in advancing safety**
5. Project Schedule/Next steps

Community Engagement

Solicit community input



Bicycling



Walking



Motor Vehicles



Micromobility

Engage with community-based organizations



In-person and virtual meetings



Countywide workshop



Pop-up and other outreach events

Share recommendations



Project fact sheets



Online survey



Digital Content

Check our website for updates!

- Project background
- Project timeline
- Upcoming events
- Project resources

- <https://ccag.ca.gov/countywide-local-roadway-safety-plan/>



Countywide Local Roadway Safety Plan

Background

What is a Local Roadway Safety Plan (LRSP)?

A Local Roadway Safety Plan (LRSP) provides a framework for analyzing, identifying, and prioritizing roadway safety improvements to reduce severe injury and fatal collisions on local roadways. The LRSP supports a holistic approach to addressing road safety for all road users and also contributes to the California Strategic Highway Safety Plan (SHSP), which aims to reduce traffic fatalities and serious injuries across the State's roadways.

Why is an LRSP important?

Development of a LRSP will help San Mateo County get funding to build roadway improvements that will positively impact everyone residing in and traveling through San Mateo County, especially the most vulnerable communities.

Where can you find us?

- Local events:
 - East Palo Alto Farmer's Market - Wednesday, August 16, 9AM-1PM
 - Half Moon Bay Farmers Market – Saturday, August 19th, 9AM-1PM
 - Foster City Summer Days – Sunday, August 20, 11AM-5PM
 - San Carlos Block Party – Sunday, August 27, 4PM-8PM

GET INVOLVED

Join us at an upcoming event!

We will be joining local events throughout San Mateo County and would love to see you there. For a list of upcoming events, visit the website or scan the QR code.



East Palo Alto Farmers' Market



Foster City Summer Days

We need your input!

COUNTYWIDE LOCAL ROADWAY SAFETY PLAN

C/CAG is developing a Countywide Local Road Safety Plan (LRSP) to provide a countywide safety vision and assessment. A LRSP is a means for providing local and rural road owners with an opportunity to address unique highway safety needs in their jurisdictions.

The final plan will consist of a comprehensive document that identifies and analyzes safety problems and recommends safety improvements in the County, including at specific high-priority locations and for multiple modes. The dashed lines on the map represent the identified High Injury Network (HIN) for various modes of transportation. Orange = Motor Vehicle HIN, Blue = Pedestrian HIN and Green = Bicyclist HIN. The map also highlights the Countywide Equity Focus Areas in grey.

This map input platform is a means to seek community input and feedback regarding pressing safety issues on your community roadways. This is your opportunity to highlight key safety issues.

To use this map to leave a comment: Double click on any point in the map to begin leaving a comment. You may just make a comment on a point. When you have clicked successfully, a pop-up box will appear with the instructions to "Comment on this point by clicking here". Click on the "here" to activate the comment box and begin typing. You may add the category of your comment, as well as optional information.

Your participation and support is key to developing a successful countywide LRSP to support safety in San Mateo County. Thank you!

[View a list of existing comments](#) →

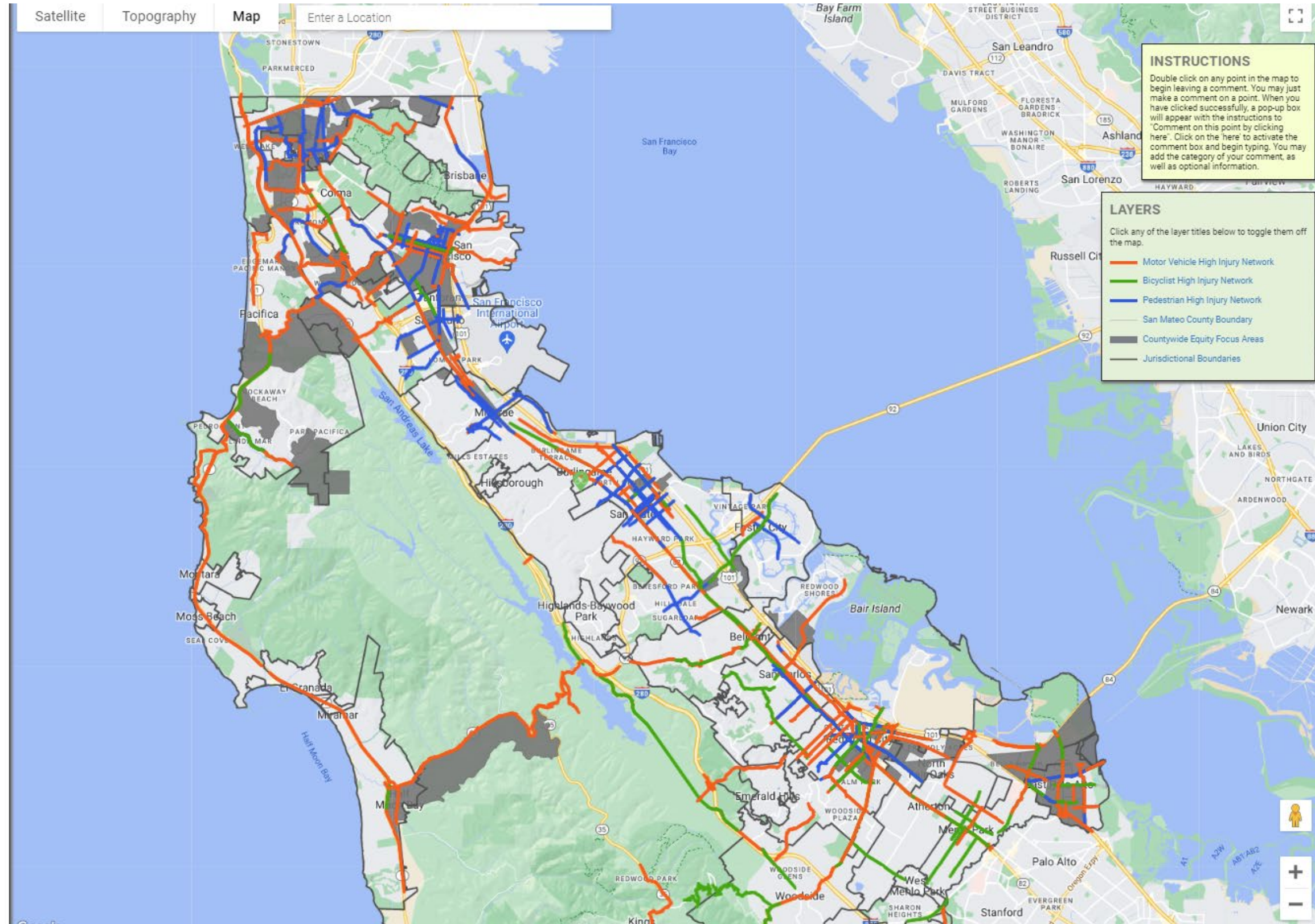
Having trouble viewing or using the map? Please contact Divya Gandhi at dgandhi@kittelson.com with your comments.

Created by Divya Gandhi

© 2007-2023 Kittelson & Associates, Inc. unless otherwise noted.

You are logged in.

- [Edit Map or Description](#)
- [View & Export Comments](#)
- [Edit Profile](#)
- [Log out](#)



Virtual Meeting (Webinar) Guidelines

Welcome

- Meeting Ground Rules
- This meeting is being recorded

Questions

- To ask a question:
 - Click on the Q&A Icon
 - Type into the text box
- All perspectives are welcome
- Everyone will have a chance to participate
- Be respectful of other opinions



Thank you for attending!

For more information:

<https://ccag.ca.gov/countywide-local-roadway-safety-plan/>

Email us at:

Jeff Lacap, jlacap@smcgov.org

Eva Gaye, egaye@smcgov.org

