



OFFICE OF  
SUSTAINABILITY  
COUNTY OF SAN MATEO

# Update on SMC Energy Watch Program and RICAPS Initiatives

August 16, 2023

Susan Wright, Climate Protection Program Manager

Laura Wong, Sustainability Specialist

Avana Andrade, Senior Sustainability Specialist





# Energy and Climate Action Planning Programs Overview



## Energy programs that serve:

- Municipal and special districts
- School districts
- "Hard-to-reach" small businesses

## Climate action planning and technical support program (RICAPS) that serves:

- City and County Sustainability and Planning Staff
- Peninsula Clean Energy
- C/CAG
- Institutional partnership and coordination

**Funding provided by PG&E, PCE, C/CAG**



*Pacific Gas and  
Electric Company™*



**RICAPS**  
Regionally Integrated Climate Action Planning Support





# County Government, Municipalities, & Special Districts



## Benchmarking



Support agencies in understanding their buildings' energy use



## Incentive Programs



Connect agencies with technical assistance and incentives to implement projects



## Methane Gas Catalog



Help agencies develop a pathway for electrifying their building stock



## Facilities Working Group



Quarterly meeting to learn from industry experts and peers



## Financing



Help agencies find ways to fund projects



## Capital Improvement Plans



Ensure there are no missed opportunities to electrify







# Supporting Cities in Reducing GHG Emissions

## Reviewing Capital Improvement Plans



- Provide analysis of CIPs to ensure there are no missed opportunities to electrify facilities
- Direct cities to programs that support the transition from methane gas to electricity



**Challenge:**  
Intervening in long-term facilities planning

## Methane Gas Catalogue



- Broadscale county planning to identify methane gas powered equipment in public agency buildings
- Previous participants: Half Moon Bay, Brisbane, Atherton, and the County
- San Mateo Community College District Internship

**Challenge:**  
Low uptake of this free service

## Referrals to Programs for Free Support and Equipment



- Government Program: Little to no-cost heat pump water heaters when replacing a methane gas powered water heater
- California Energy Design Assistance Program: Get free technical support and incentives for new construction

**Challenge:**  
Permitting variances across the county







# K-12 Public Schools



## Benchmarking



Support schools in benchmarking their buildings



## Incentive Programs



Inform schools about programs that reduce costs



## Methane Gas Catalog



Help schools understand how methane is being used



## Facilities Working Group



Provide a space for facilities staff to learn about energy



## Plan Development Support



Help schools plan for greening their operations



## Data Collection Project



Document school energy use to identify opportunities for projects







# Improving School Resiliency and Reducing Operating Costs

## Providing Support for Plan Development



- Helping schools develop climate action or facilities master plans to reduce carbon emissions in their daily operations
- Surveying San Mateo Union High School District and Cabrillo Unified School District for current needs

**Challenge:**  
Understanding the unique needs of schools

## Collecting Energy Data from School Facilities



- Collaborating with SMCOE to conduct Green Facilities Landscape Analysis to understand existing school facilities and energy use
- Support schools in connecting to resources that improve efficiency and performance

**Challenge:**  
Encouraging participation when staff time is limited

## Referring Public Schools to PG&E's K-12 Program



- Provides free energy audits and incentives for energy efficiency upgrades to facilities
- K-12 Program: Supports schools in becoming more energy efficient by providing financial incentives
- CEDA: Get free technical support and incentives for new construction

**Challenge:**  
Getting the attention of schools!







# Hard-to-Reach Small Businesses (HTR SMBs)



## Benchmarking



Support businesses in benchmarking their buildings



## Financing



Help businesses find ways to fund projects



## Small Business Resource Center



Inform businesses about Office of Sustainability services



## Simplified Savings Program



Help businesses access free assessments and direct installation of equipment



## Kitchen Electrification



Upcoming Project: Cost study to electrify 10 commercial kitchens



## Business Equipment Survey



Upcoming Project: Conduct a survey on existing equipment in small businesses







# Making Energy Efficiency Accessible to HTR SMBs

## Promoting the Simplified Savings Program



- Provides free energy audits and incentives for energy efficiency upgrades to hard-to-reach small businesses
- CBO partnership for drop-in visits: El Concilio of San Mateo County

**Challenge:**  
Delays in the launch of the Simplified Savings Program

## Exploring Kitchen Electrification



- Partnering with the Food Service Technology Center to conduct an electrification cost study on commercial kitchens
- Analysis will address key barriers and opportunities for commercial kitchen electrification

**Challenge:**  
Finding interested restaurant owners

## Learning about the Commercial Landscape



- Conducting a survey of small businesses to better understand how we can support energy efficiency in this space
- Ensuring equitable access to energy efficiency programs

**Challenge:**  
Encouraging participation in the survey





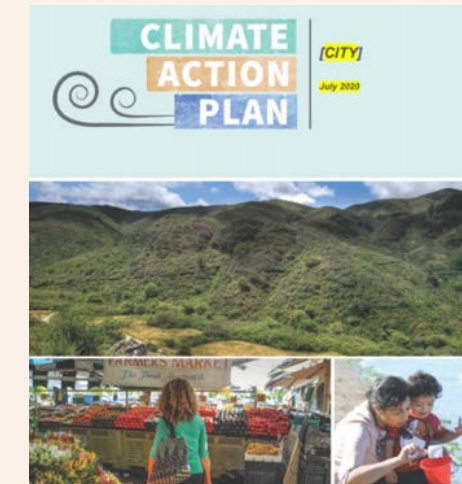
## RICAPS Provides Comprehensive Climate Action Planning Support



## Monthly Working Group



Focus on timely topics and issues, create opportunities for collaboration.



# Blueprint Climate Action Framework



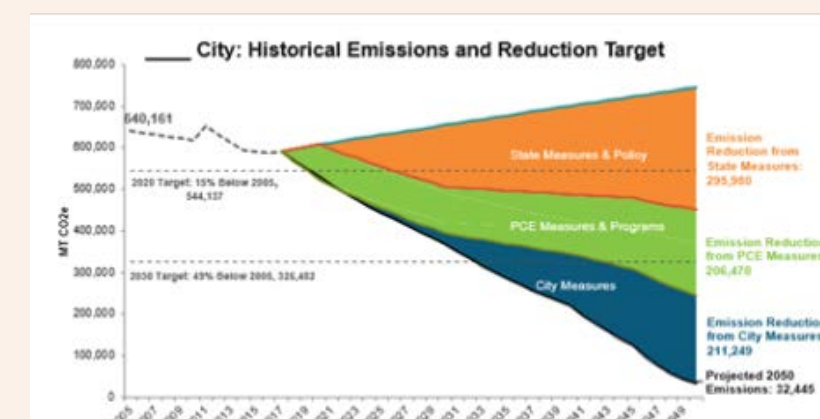
Template provides accessible entry point for developing tailored plans.

		Initiatives Impact		Activity Data Impact				Prioritization		Quantification Measures			
Approach	Category	Initiative ID	Impact per 100k	2024 Net Economic Impact (\$M)	2024 Net Social Impact (\$M)	2024 Net Environmental Impact (\$M)	2024 Net Health Impact (\$M)	Overall Performance Score (1-5)	Risk Level	Strategic Alignment	Capital Cost (\$M)	Operational Cost (\$M)	Revenue (\$M)
Capital Investment	Yes	001	150	150,000	20000			4.8	Low	Yes	100,000	50,000	200,000
Operational Policy	Yes	002	120			4,000,000		3.5	Med	No			
Development Policy	Yes	003	100			1,500,000		3.0	Med	No			
Government Policy	Yes	004	80			1,000,000		2.5	Med	No			
Development Policy	Yes	005	70			800,000		2.0	Med	No			
Operational Policy	Yes	006	60			600,000		1.5	Med	No			
Development Policy	Yes	007	50			500,000		1.0	Med	No			
Operational Policy	Yes	008	40			400,000		0.8	Med	No			
Development Policy	Yes	009	30			300,000		0.5	Med	No			
Operational Policy	Yes	010	20			200,000		0.3	Med	No			
Development Policy	Yes	011	10			100,000		0.1	Med	No			
Operational Policy	Yes	012	5			50,000		0.05	Med	No			

## Menu of Measures



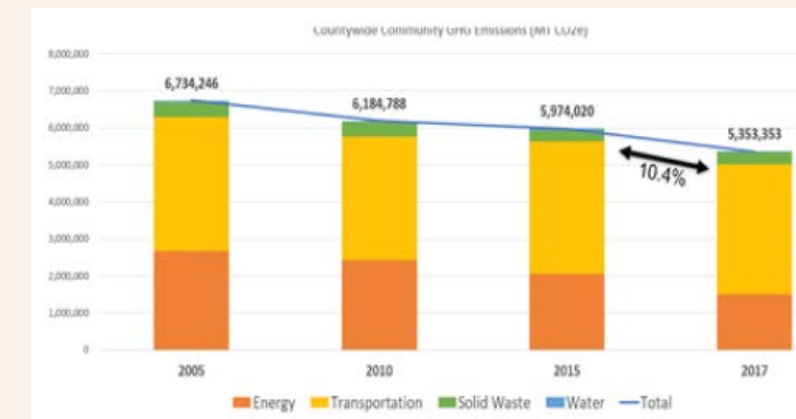
Menu offers starting point for further customization.



## Forecasting Tool



Tool provides basis for short- and long-term planning.



# Community GHG Inventories



Inventories assist staff in prioritizing measures for implementation.



## Implementation Assistance



RICAPS staff support implementation of technical projects such as facilities electrification.



# RICAPS Facilitates Countywide Action

## Strategizing Countywide Building Electrification



- Facilitate cross-jurisdictional approach to policy development and implementation
- Host topical workshops and webinars
- Pursuing publication of countywide carbon neutrality action plan

**Challenge:**  
Coordinating across boundaries

## Hosted Workshops on Grid Reliability



- Hosted spring series focusing on grid reliability
- Speakers from PG&E, CPUC, PCE, E3 helped improve understanding of grid reliability at the local scale
- Provides basis for communications materials to assist city staff and elected officials in communicating with the public

**Challenge:**  
Partnering with PG&E for long-term planning

## Planning Public Communications Campaign



- Coordinating with PCE staff to formulate a tailored communications framework
- Comprehensive suite of collateral will be a resource to improve public perception of electrification and dispel misinformation

**Challenge:**  
Public perception of electrification



# Envisioning RICAPS Programming to Accelerate Climate Action



Top 3  
Programs

Jurisdiction Votes (Number)	Potential RICAPS Program Concept
10	Electrification outreach campaign to small contracting businesses and distributors, with a focus on businesses that are multilingual, and not covered under BayREN contractor outreach.
10	Regional coordination on permit compliance and permit streamlining
7	Create tailored education materials for electeds, enabling conditions for passage of existing building electrification policies
6	Outreach campaign for the general public & local governments, focusing on grid upgrades, reliability, zonal electrification, etc.
4	Whole home electrification plan training pilot
3	Support electrification curriculum development pilot programs/apprenticeship incubator
1	Strategic fundraising for workforce training programs
1	Outreach and storytelling: outreach package to compliment PCE building electrification hub
0	Research on building vintage: what kinds of building stocks are more likely to have electrification challenges





OFFICE OF  
SUSTAINABILITY  
COUNTY OF SAN MATEO

# THANK YOU

**Susan Wright**

Climate Protection Program Manager  
[swright@smcgov.org](mailto:swright@smcgov.org)

**Laura Wong**

Sustainability Specialist  
[lawong@smcgov.org](mailto:lawong@smcgov.org)

**Avana Andrade**

Senior Sustainability Specialist  
[aandrade@smcgov.org](mailto:aandrade@smcgov.org)

