



Bay Trail SFO Gap Study

October 26, 2023
C/CAG Bicycle and Pedestrian Advisory Committee



Agenda

- Bay Trail Overview
- Bay Trail SFO Gap Study Overview
- Public Outreach
- Next Steps

Bay Trail Overview

Bay Trail

- 70% complete, ~350 miles
- 5½ Toll Bridges
- Richmond-San Rafael Bridge Path Pilot
- Public access to the Bay
- Separated Path Where Feasible



Bay Trail: A New Vision for A Public Asset

TOPIC	OLD	NEW
Focus Area	Singular — Recreation	Multiple — Recreation AND Active Transportation, Public Health , etc.
Primary Goal	Complete the 500-mile “spine” loop around the Bay	Complete spine AND “spur” and “connector” facilities to improve equitable access and usage
Serving Populations	Those with easy access to the shoreline	Emphasis on all ages and abilities, Equity Priority Communities
Design Emphasis	Class I Multi-Use Path Facility	Class I Path AND Class IV Protected Lanes, Quick Build, Protected Intersections
Decision Drivers	Recreation	Data on Access, Equity, System Integration

Bay Trail Goals

-  Foster active transportation
-  Promote healthy communities
-  Facilitate environmental stewardship and education
-  Increase equitable public shoreline access for all Bay Area residents and visitors



Image Credit: Laszlo Green



Bay Trail SFO Gap Study Overview

MTC Active Transportation/Bay Trail Team



Diane Dohm, AICP
Bay Trail SFO Gap Study
Project Manager



Nicola Szibbo, PhD
Bay Trail SFO Gap Study
Principal-in-Charge



Lee Huo
Bay Trail SFO Gap
Study Support



Lily Brown
Bay Trail SFO Gap
Study Support

Consultant Team

FEHR & PEERS

PM: Dana Weissman





Technical Advisory Committee

BART

BCDC

Caltrain

Caltrans

C/CAG

City of Burlingame

City of Millbrae

City of San Bruno

City of South San Francisco

Coastal Conservancy

PG&E

SamTrans

San Mateo County

SFO

Project Need

There is an existing three-mile gap in the Bay Trail around San Francisco International Airport (SFO), which is an opportunity for a new Bay Trail alignment around the airport through the cities of Millbrae and San Bruno.



Image Credit: Laszlo Green

Project Description

SFO Gap Study is a *planning-level study* that will:

- Document existing conditions
- Identify potential Bay Trail alignments
- Determine a preferred trail alignment and develop 15% concept design

Budget: \$160,000

Source: Donation from John and Gwen Smart Foundation

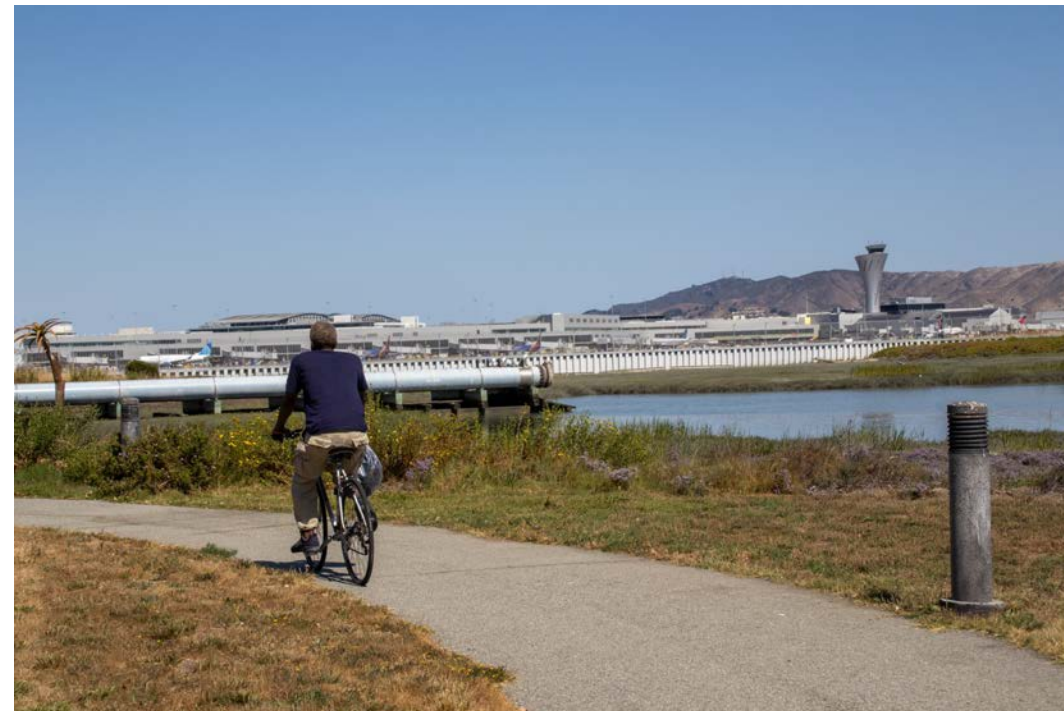
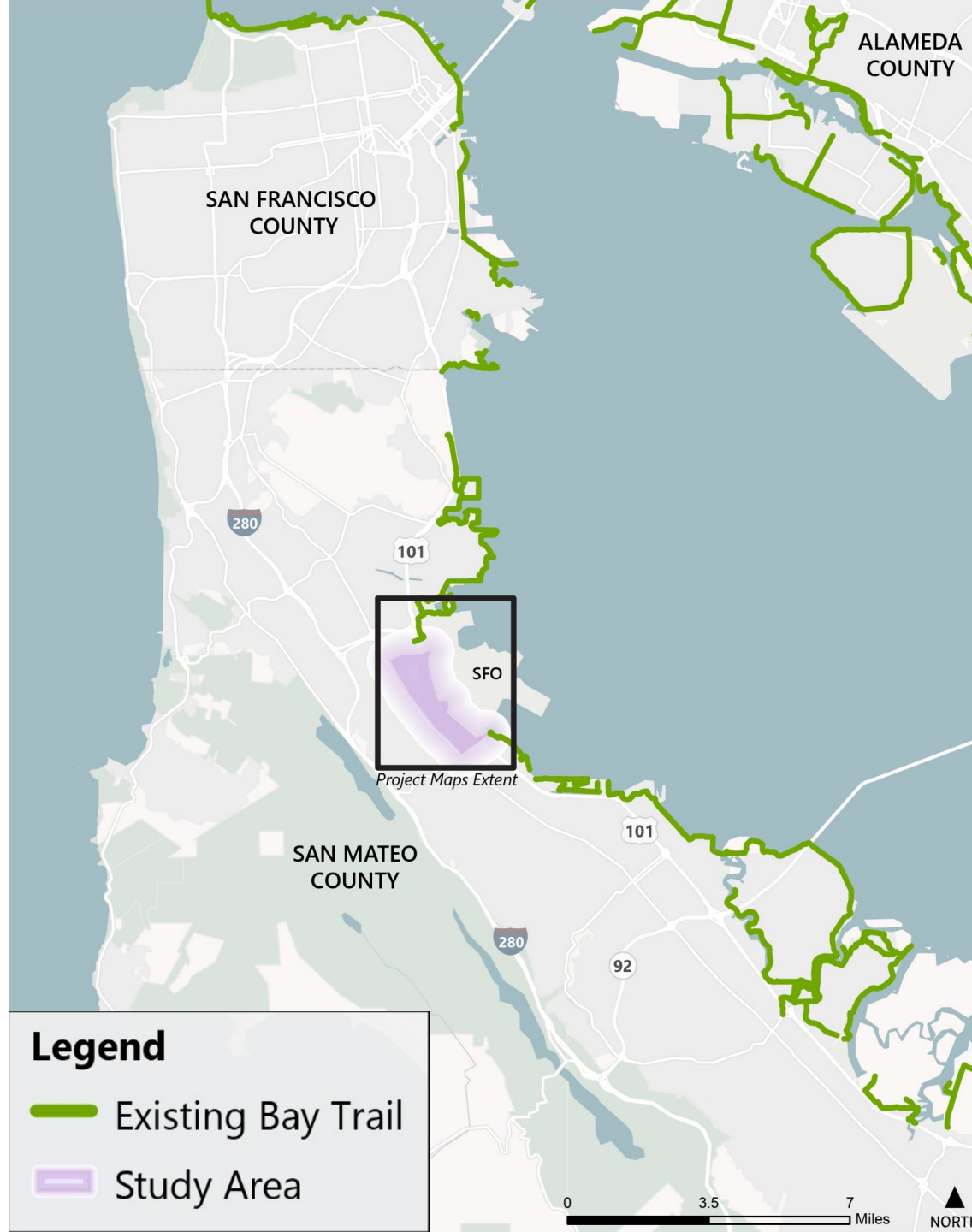


Image Credit: Laszlo Green

Regional Location

- Bay Trail currently has a gap where SFO abuts waterfront
- South San Francisco to north, San Bruno to west, and Millbrae to south
- Completed sections of Bay Trail exist to north and south of gap



Legend

- Existing Bay Trail
- Study Area

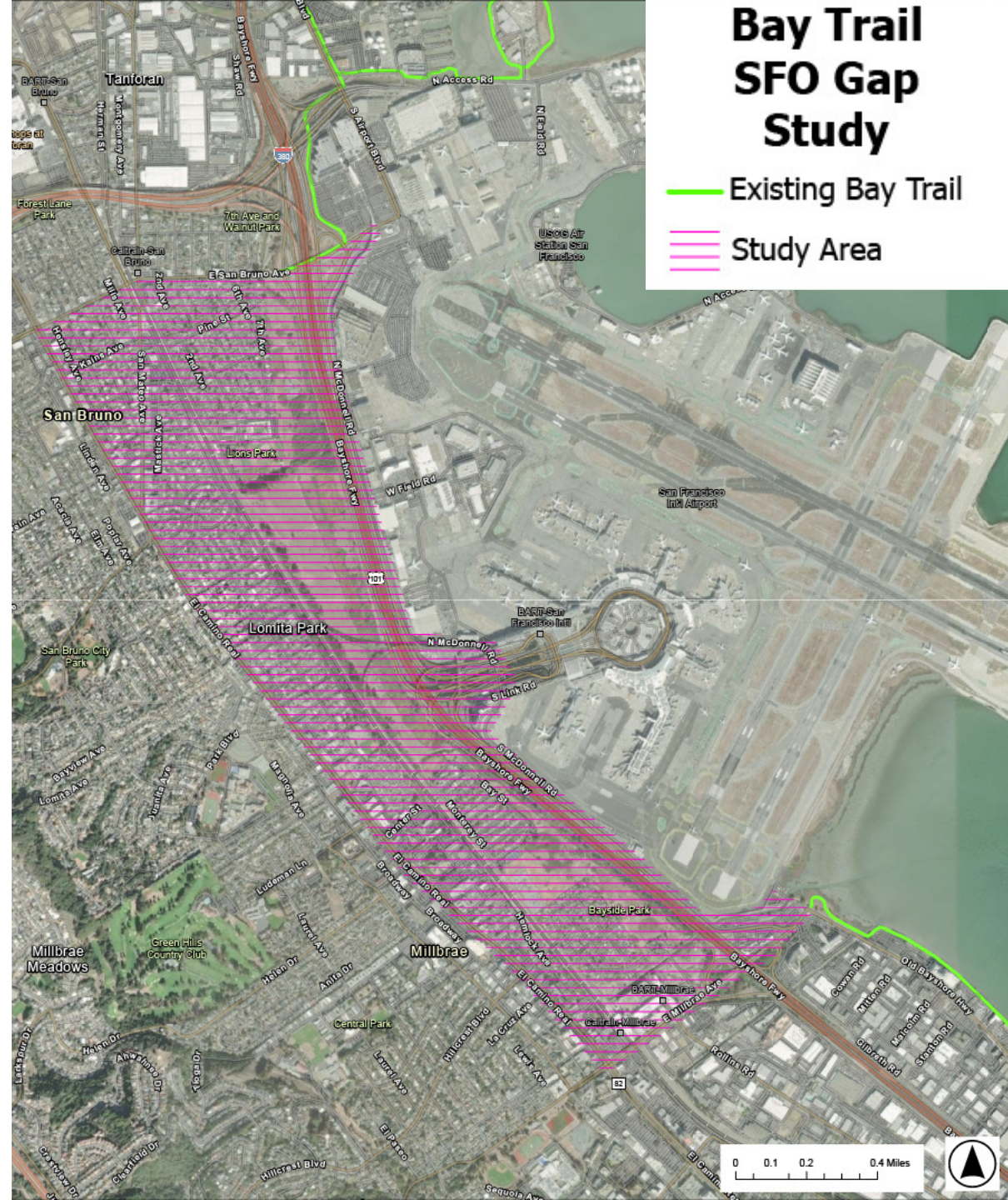
Study Area

San Bruno Ave (North)

Millbrae Ave (South)

SFO (East)

El Camino Real (West)



Project Timeline

Existing Conditions
Summer/Fall 2023

**Conceptual Design
Alternatives and
Analysis**
Fall/Winter 2023-
2024

**Preferred
Alignment 15%
Design**
Spring/Summer
2024

**Plan Document/
Final Study**
Late 2024

Community & Stakeholder Engagement
Summer 2023 - Summer 2024



TAC Meeting #1
+
Public Engagement



TAC Meeting #2
+
Public Engagement



TAC Meeting #3
+
Public Engagement

Community Engagement

Phase 1: Fall 2023

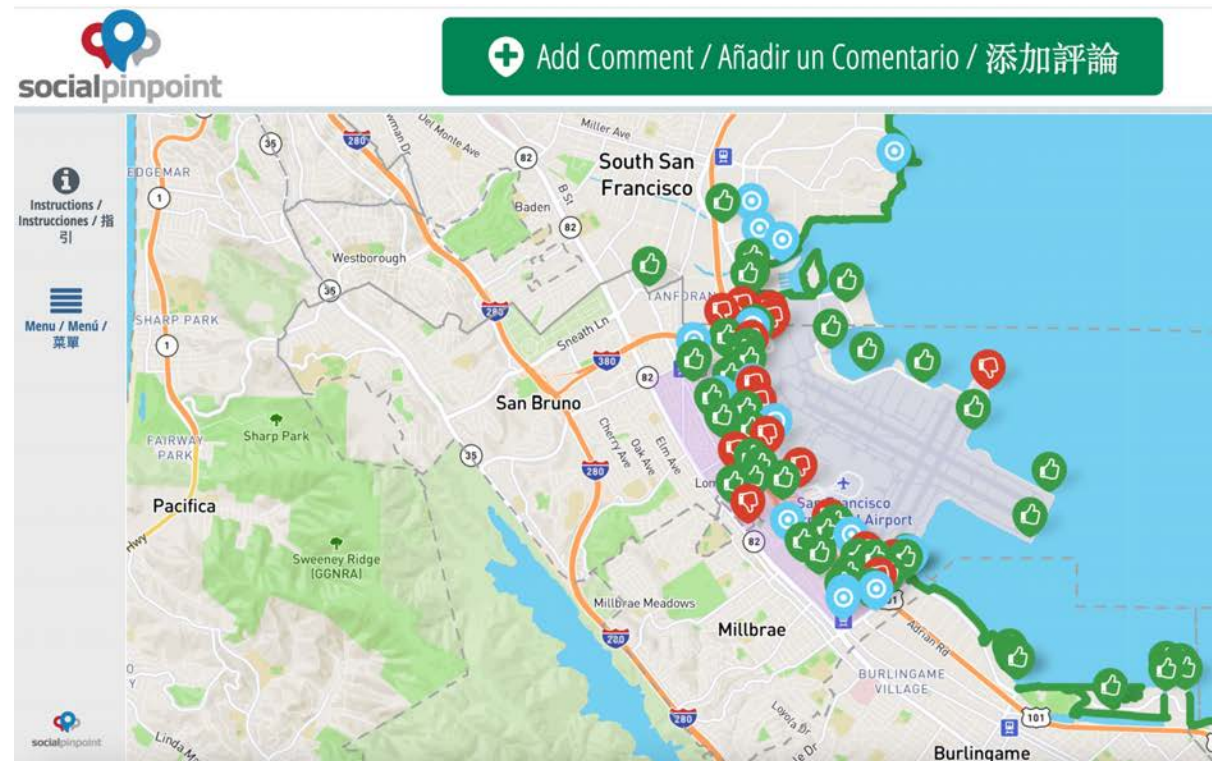
Understand general Bay Trail and active transportation usage within the study area; identify preferred trail user experience.

Phase 2: Winter/Spring 2024

Gather input on the 3 potential alternative alignments

Phase 3: Summer 2024

Gather input on the final preferred alignment



<https://fehrandpeers.mysocialpinpoint.com/mtc-sfo-bay-trail-gap-study/map#/>



Phase 1 Community Engagement: Social Media

Social Media Outreach: Facebook + Instagram

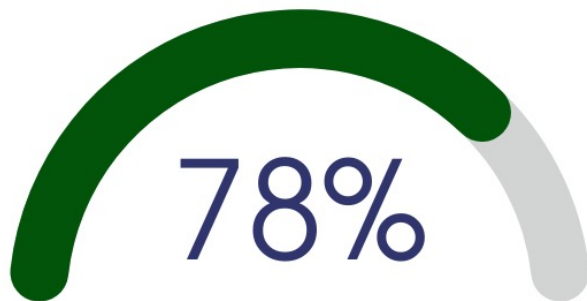
521,000+
IMPRESSIONS

4,800+
CLICK-THRU

1,500+
SURVEY
RESPONSES



Phase 1 Community Engagement: Bay Trail Use



USE THE BAY TRAIL NEAR SFO
(all survey responses)



USE THE BAY TRAIL NEAR SFO
(Spanish survey)

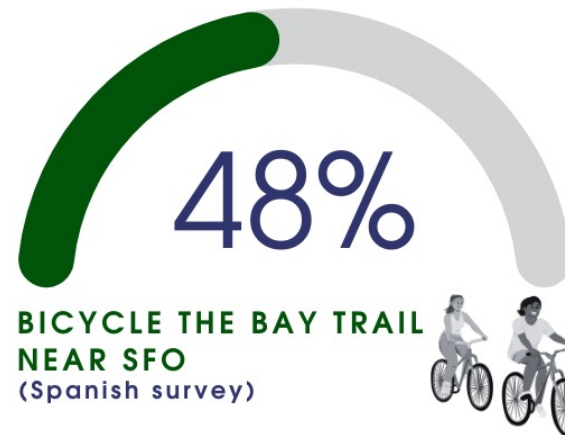


WOULD USE FUTURE BAY TRAIL
THROUGH SFO AREA
(all survey responses)



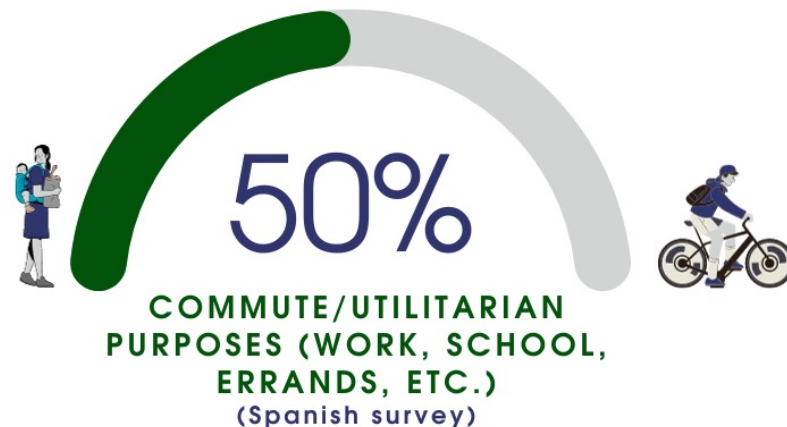
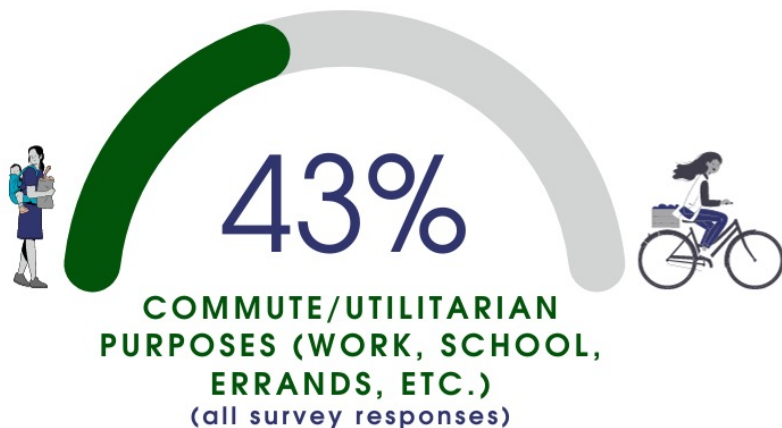
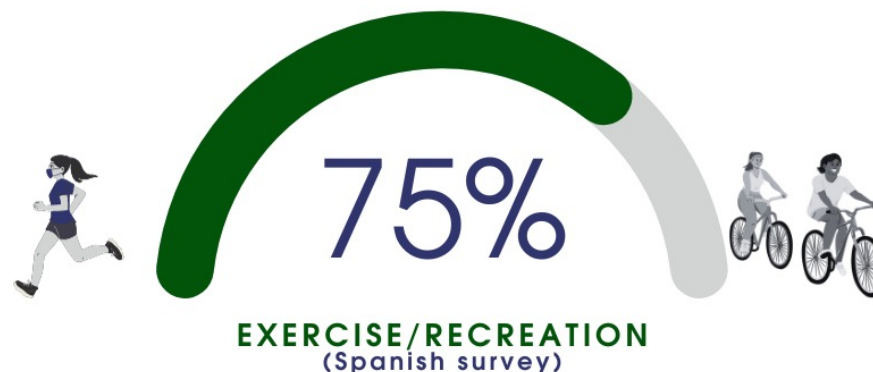
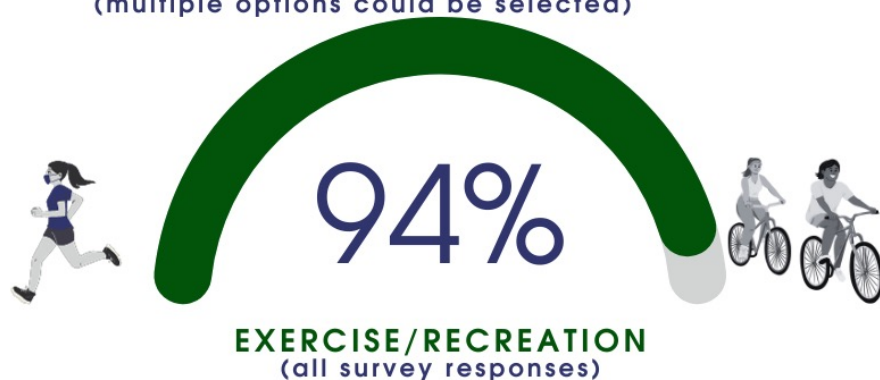
WOULD USE FUTURE BAY TRAIL
THROUGH SFO AREA
(Spanish survey)

Phase 1 Community Engagement: Bicycle and Walk/Run/Jog



Phase 1 Community Engagement: Recreation, Commuting, and Other Uses

WHY DO YOU USE THE BAY TRAIL
 NEAR SFO?
 (multiple options could be selected)



Phase 1 Community Engagement: Challenges

Why don't you use the Bay Trail near SFO?

I don't know
where it is

*No sé en donde
está*

It isn't
convenient

It doesn't
feel safe

It's difficult
to access

*Es difícil de
acceder*

Phase 1 Community Engagement: Factors for Future Bay Trail

People want a Bay Trail around SFO that is safe, comfortable, and connected where people can experience nature and the Bay.

Safety - *I want a trail that is not near environmental hazards (i.e., air quality, noise, etc.) or is not on high-speed or high-traffic roadways.*

Comfort - *I want a trail that feels comfortable for all ages and abilities, including children and families, which is separated from car/truck traffic.*

Connected - *I want a trail that is connected to other walking/biking routes and transit stops.*

Bay - *I want a trail that is near the Bay or has views of the Bay.*

Nature - *I want a trail where I experience nature, even if it is not next to the Bay.*

Next Steps



Phase 2 Community Engagement: Events

Phase 2 focuses on the 3 potential alignments and conceptual designs.

We will be doing an in-person engagement event.

Please share any information you have about community events in Millbrae or San Bruno from January through March 2024.



Phase 2 Community Engagement: Languages

Engaging with communities that speak Spanish, Chinese, and other languages –

Please share with us ideas of how we can reach and engage with people who speak other languages in and around the study area.



Diane Dohm

Project Manager, Bay Trail SFO Gap Study

Design and Project Delivery Section

Metropolitan Transportation Commission (MTC)

ddohm@bayareametro.gov

Study Web Page:

<https://mtc.ca.gov/operations/regional-trails-parks/san-francisco-bay-trail/bay-trail-sfo-gap-study>

