



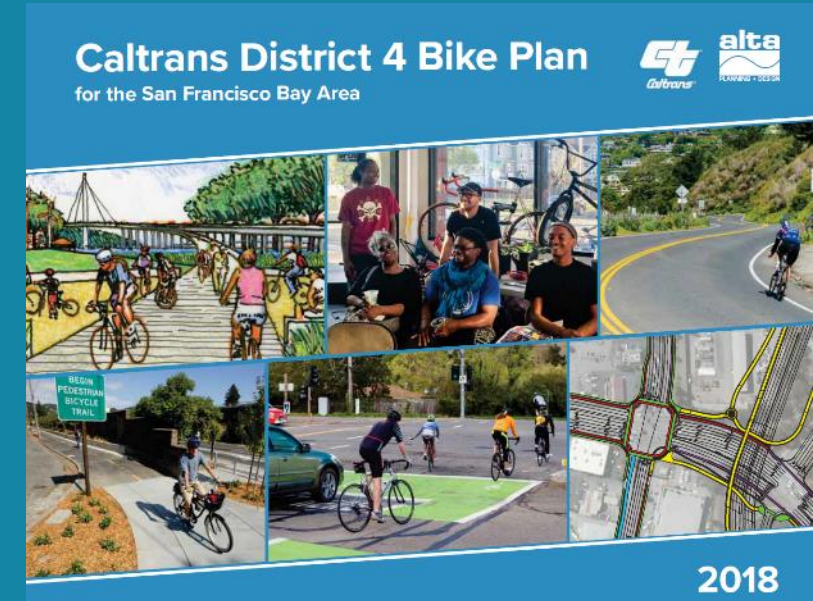
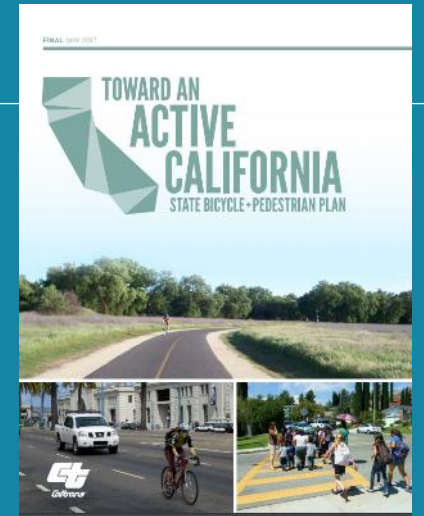
**CALTRANS  
BAY AREA**

# ***BICYCLE PLAN UPDATE***



# Why Update the Bike Plan?

- Current D4 Bike Plan is 5 years old
- Performance Tracking
- Build on success and identify more paths forward
- Opportunity for Engagement
- Changing mobility trends



# Draft Vision and Goals

By 2040, people in California of all ages, abilities, and incomes can safely, conveniently, and comfortably bike for their transportation needs.

## SAFETY

Reduce the number, rate, and severity of bicycle involved collisions



## MOBILITY

Increase biking by providing comfortable, convenient and connected network of bikeways



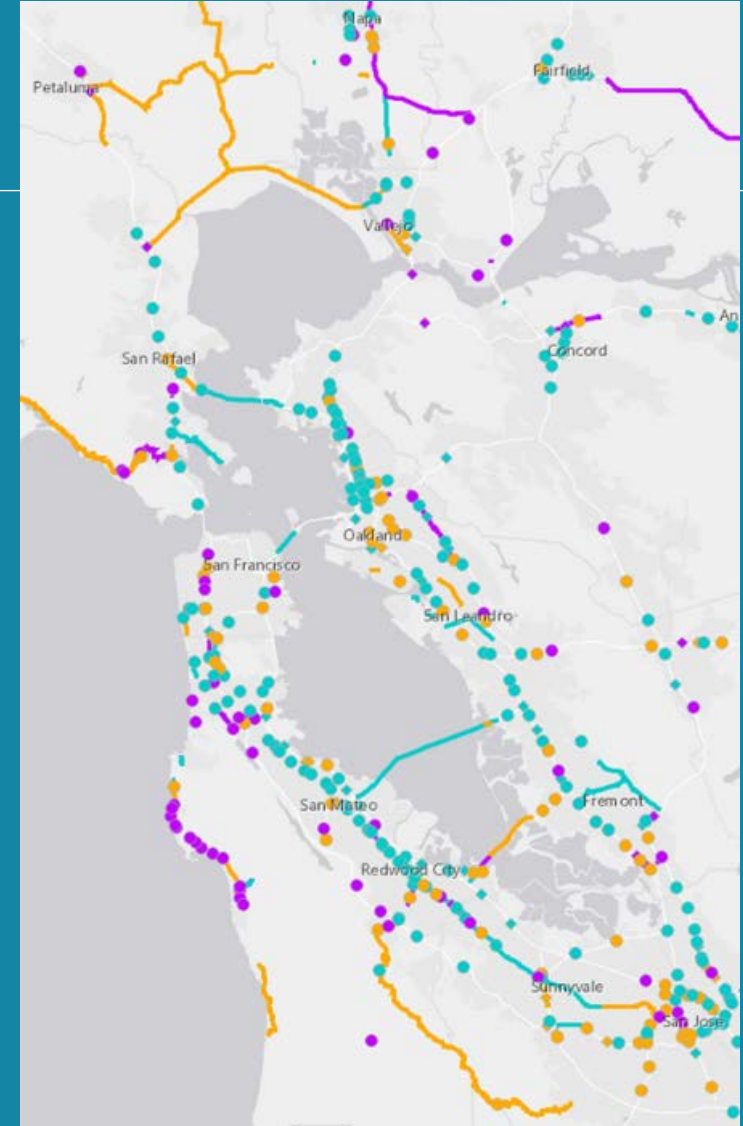
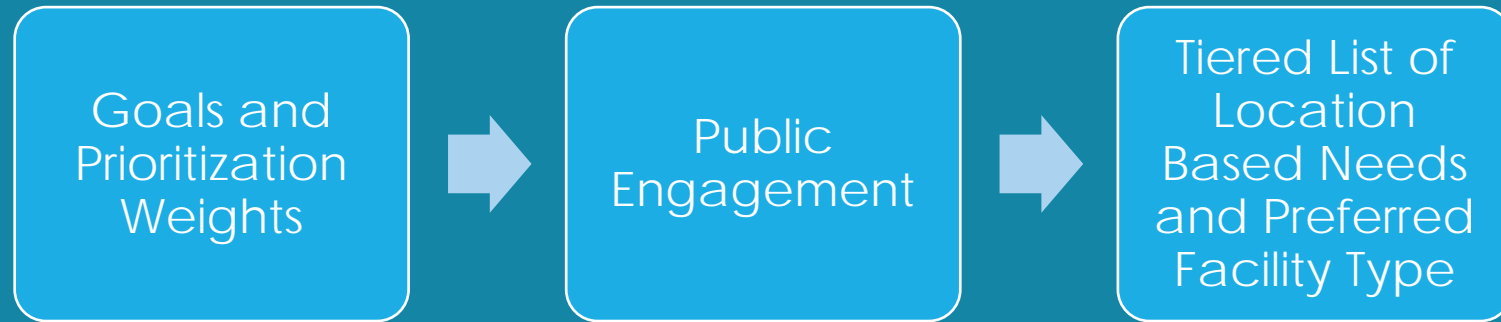
## EQUITY

Eliminate barriers to biking, so that everyone has access to high quality biking infrastructure no matter their race, socioeconomic status, identity or where they live





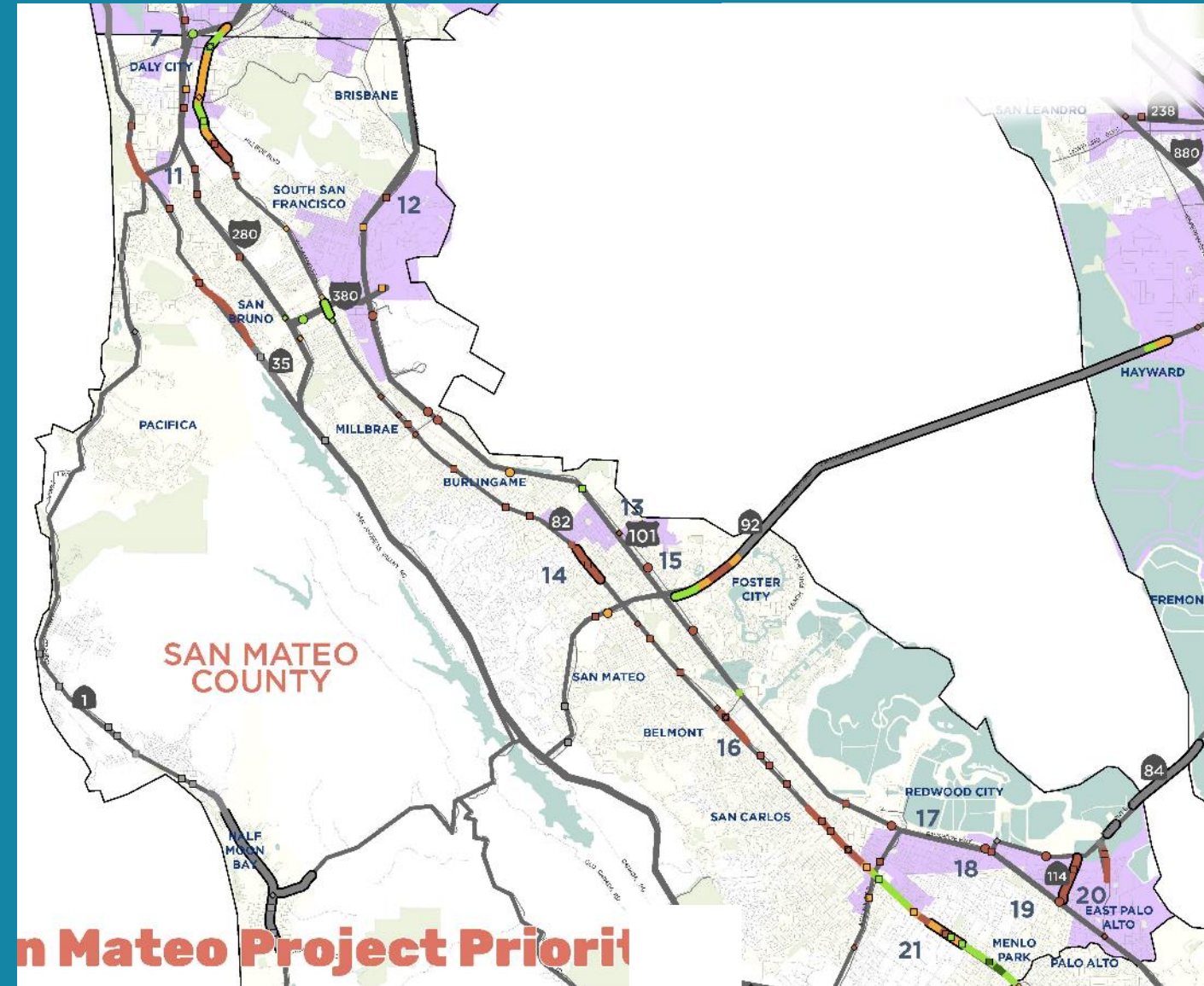
# Outcomes



# 2018 Bike Plan Identified Bike Needs in San Mateo County

## San Mateo County Improvement Highlights

- 11 Provide Class IV through Seramonte Blvd interchange
- 12 Provide Class IV bikeway on Sister Cities Blvd over US 101
- 13 Reconstruct and square up ramps from US 101 to 3<sup>rd</sup> Ave/4<sup>th</sup> Ave in San Mateo
- 14 Provide Class IV on El Camino Real between 2<sup>nd</sup> and 9<sup>th</sup> Ave in San Mateo
- 15 New Bike/ped overcrossing from Lodi Ave/Norton St to Haddon Dr in San Mateo
- 16 Provide Class I on El Camino Real from Neil Ave to Ralston Ave in Belmont
- 17 New bike/ped undercrossing from Chestnut St to Seaport Blvd, using existing railroad undercrossing
- 18 New bike/ped crossing just north of Marsh Rd in Menlo Park
- 19 New bike/ped overcrossing over SR-84 and SR-114 intersection
- 20 Provide Class IV on Willow Rd connecting Bay Trail to new Willow Rd overcrossing (under construction) in Menlo Park
- 21 Class IV on El Camino Real between Isabella Ave and San Hill Rd in Menlo Park



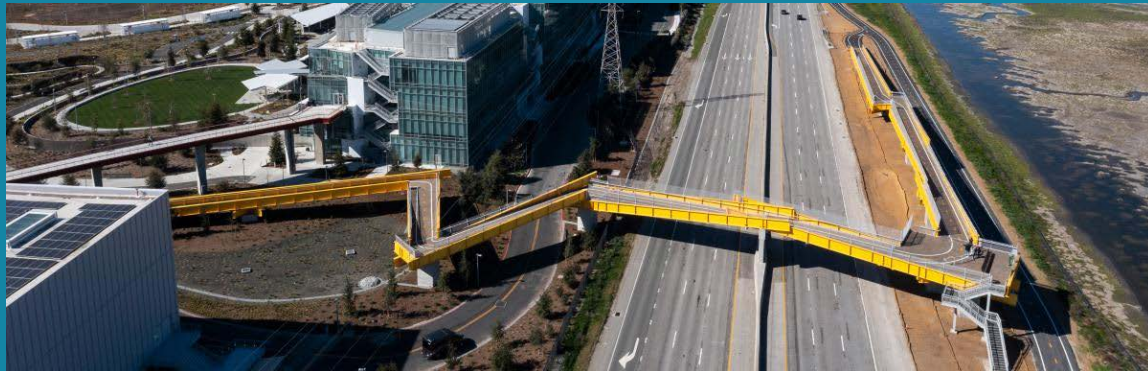


# Bike Plan Progress in San Mateo County

El Camino Belmont Connector



Bayfront Expressway Ped/Bike Overcrossing



University Ave/101 Bike/Ped overcrossing progress



Willow Rd/101 overcrossing




# Web Survey and Map is live!

## Go to [dot.ca.gov/D4BikeSurvey](https://dot.ca.gov/D4BikeSurvey)

Caltrans

Home | Caltrans Near Me | District 4 | District 4 Programs | District 4 - Division of Transportation Planning and Local Assistance | Office of Transit and Active Transportation | Caltrans Bay Area Bike Plan Update Survey

### Caltrans Bay Area Bike Plan Update Survey



[Click here to take the survey!](#)

[¡Haga clic aquí para hacer nuestra encuesta!](#)

[点击这里参加我们的调查!](#)

[點擊這裡參加我們的調查!](#)

Statewide Campaigns

<https://experience.arcgis.com/experience/cf99ad51e5404c548b2cbbd635a44f5c/page/Home/>



Caltrans wants to hear from you!

[Comment on Map](#)

[Take Survey](#)

Click on both the Map Comments and Survey above to give your feedback!

#### About

Caltrans Bay Area is updating the Bike Plan that will cover the nine county Bay Area! The Bike Plan will identify opportunities to improve biking on and across the State Highway System. Click on the Survey and Map Comments above to give your feedback!

For questions or comments, contact [D4BikePlan@dot.ca.gov](mailto:D4BikePlan@dot.ca.gov)

Note: Survey responses already collected on this Plan Update will be included in our data analysis, and do not need to be re-submitted here.



## Caltrans Bay Area Bike Plan Update Survey

### Welcome to the Caltrans Bay Area Bike Plan Update Survey!

Caltrans Bay Area wants your input on which features will make biking on Caltrans facilities comfortable, convenient and connected! Share your feedback by taking our short survey, which will ask about improvements you want on Caltrans facilities as well as your biking habits. All questions are optional.

For additional background information, visit: <https://dot.ca.gov/d4bikeplanupdate>

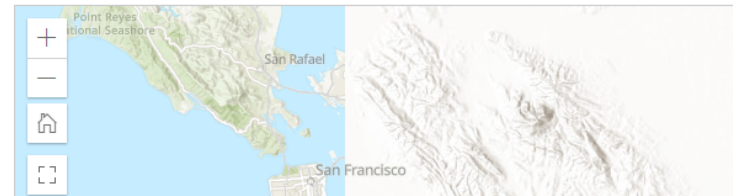
### 1. How would you rank biking along or across Caltrans-owned roadways in the county where you live/bike most often?

Refer to the map below for Caltrans facilities (highlighted in yellow)  
1 star is the worst ranking, and 10 stars is the best ranking.

Choose between 1 to 10 stars below.



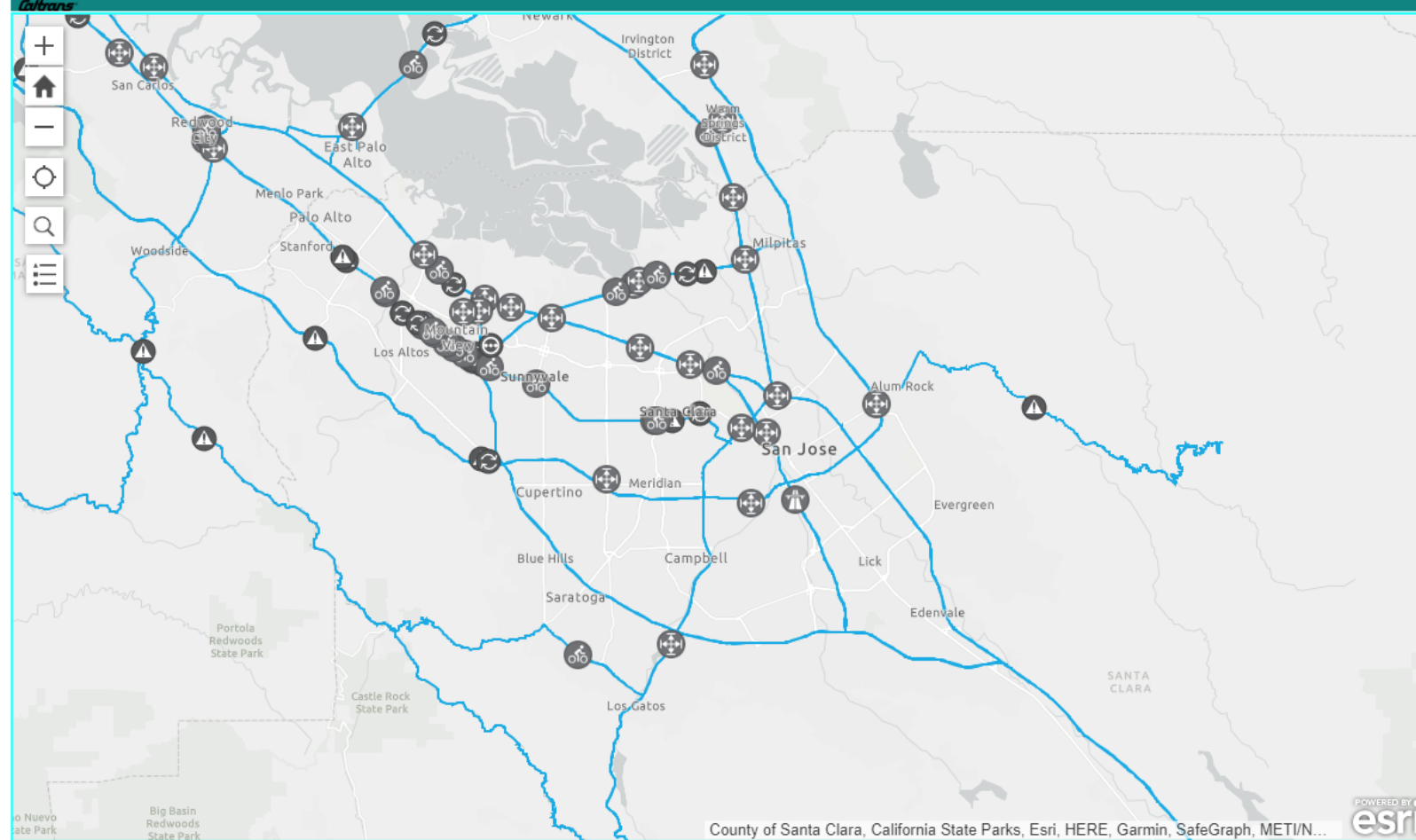
Caltrans roadways highlighted in yellow (includes crossing or riding along state highways)







## Bay Area Bike Plan Update Comment Map



### Bike Plan Comments

[+ Click here to submit a suggestion](#)

Safety	7
Safety	0
Challenging Crossing	1
Safety	0
Safety	0
Bikeway Improvement	2
Connectivity	0
Bikeway Improvement	6
New Connection	7
New Connection	12
Connectivity	0
Challenging Crossing	2

This map is for planning purposes only. To report an issue or concern with Caltrans, complete a Customer Service Request by going to [csr.dot.ca.gov](https://csr.dot.ca.gov)

# Key Questions for TAC

- What do you want to see in the bike plan update?
- What are priority bikeway projects in San Mateo County on and across the state highway system?
- What elements from other bike/ped plans that you've seen that you think we should incorporate in our bike plan?
- What can Caltrans do to be a better partner with our local jurisdictions and public?







Questions/  
Comments?  
[D4BikePlan@dot.ca.gov](mailto:D4BikePlan@dot.ca.gov)