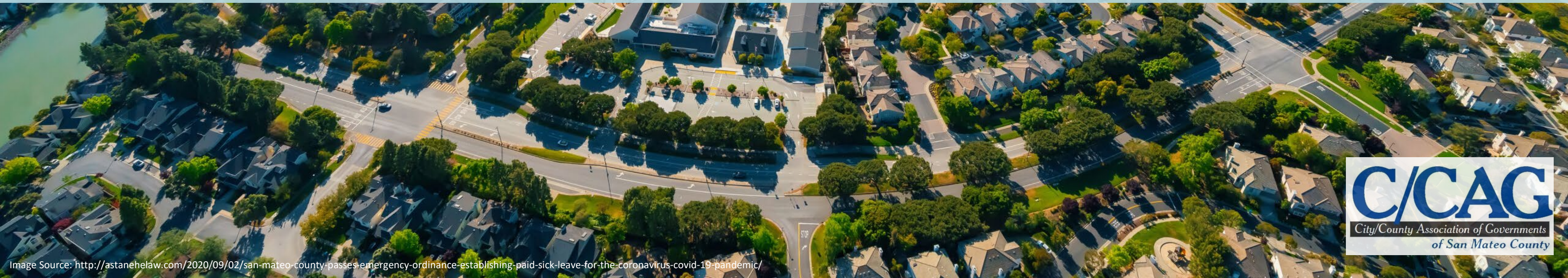




C/CAG VMT/GHG Mitigation Program

C/CAG Congestion Management Program Technical Advisory Committee

April 18, 2024





Development of a

Vehicle Miles Traveled/Greenhouse Gas Model Mitigation Program for San Mateo County

Agenda

Today's Presentation

- Project Introduction
- Program Framework
- Equity and Engagement
- Schedule

About the Project

Grant Overview

- Caltrans 2022-23 Planning Grant approved May 2022
- Contract with Fehr & Peers - April 2023

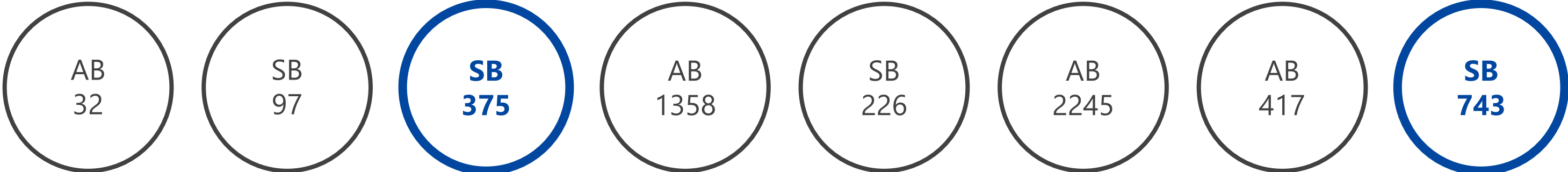
Timeline: Apr 2023 – Dec 2024

- 5 Technical Advisory Task Force (TATF) meetings
- 20 Community Based Organization discussions
- C/CAG Committee and Board Presentations
- Adoption at December 2024 Board Meeting
- Final reporting to Caltrans February 2025

Development of a

**Vehicle Miles Traveled/Greenhouse Gas
Model Mitigation Program
for San Mateo County**

Brief Legislative History



2008

SB 375 aims to **reduce GHG emissions** from automobiles. The law requires CARB to develop regional GHG reduction targets, and mandates that regions develop a sustainable communities strategy (SCS) to achieve those targets

2013-2020

SB 743 went into effect in 2020, aligning the metrics used to determine **CEQA impacts** in the Transportation category with GHG goals



ADDRESS
EQUITY

MITIGATE VMT

MITIGATE GHG

Program Goals

Program Goals

- Provide (best) approach for mitigating VMT/GHG
- Develop framework for use by cities/County
- Position for compliance with CEQA under SB 743
- Engage stakeholders for best approaches
- Balance project types – reductions - equity

Projects that may need VMT Mitigation

Land Use Projects

- Office Developments outside of Caltrain corridor
- Low Density Residential Developments
- Rural land uses or large regional generators

Potential VMT-Inducing Transportation Projects

Roadway expansions:

- 101 Managed Lanes North of 380
- Interchange projects such as 101/92 and Candlestick Interchange
- Local arterial roadway expansions





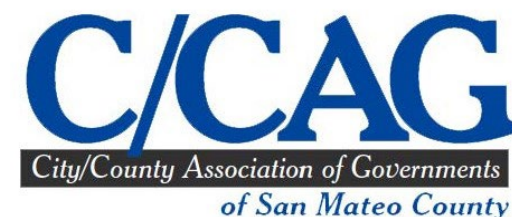
Engagement and Equity



Technical Advisory Task Force

Advise C/CAG on technical and policy decisions for the VMT/GHG Mitigation Program

- The purpose, need, and objectives for the program
- How will the program address both VMT and GHG mitigation?
- How should equity be incorporated in this program?
- What mitigation actions should be included within the program?
- Review draft documents prior to adoption



Engagement Plan



Methodology

Sharing and gathering information through in-depth individual interviews

20 individual interviews of various formats

- In-depth conversations
- Flexible scheduling
- Minimizing barriers to participation



Methodology



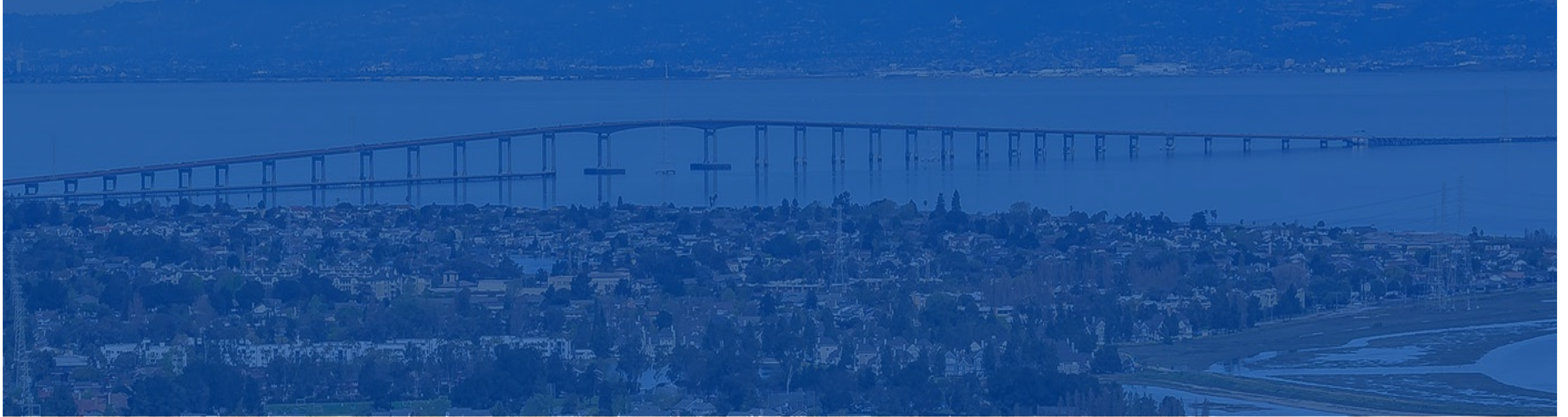
Audience

Interviewed 20 community leaders with a focus on C/CAG Equity Focus Areas

- People of color
- Lower household income
- Housing & transportation cost burden
- Do not own cars
- Older adults
- Families with children
- Disability community
- Limited English Proficient

| Organization | Equity Priority Geography | Equity Priority Communities Served |
|---|----------------------------------|--|
| Ayudando Latinos a Soñar (ALAS) | Half Moon Bay | Latinx/o/a coastal community |
| Boys and Girls Club of the Coastside | Half Moon Bay | Coastside youth |
| Senior Coastsiders | Half Moon Bay | Coastside older adults |
| Pacifica Resource Center | Pacifica | Families and individuals along the coast |
| Farmworker Advisory Commission | Pescadero | Farmworkers |
| Viviendas Justas (ALAS) | Half Moon Bay | Latinx/o/a coastal community |
| Rise South City | South San Francisco | Frontline communities |
| Peninsula Family Service | San Mateo / Daly City | Children, families, older adults throughout the Bay Area |
| Pilipino Bayanihan Resource Center (PBRC) | Daly City | Filipino community |
| Casa Circulo Cultural | North Fair Oaks | Low-income, vulnerable families. Latinx/o/a communities |
| Community Overcoming Relationship Abuse (CORA) | San Mateo | Those affected by intimate partner abuse |
| Saint James AME Zion church | San Mateo | Black community in North Central San Mateo County |
| Samaritan House | San Mateo | Anyone facing poverty in San Mateo County |
| Renaissance Entrepreneurship Center | North Fair Oaks / East Palo Alto | People facing systemic barrier to economic mobility |
| Youth United for Community Action (YUCA) | East Palo Alto | Young people of color, majority low-income, majority women |
| The Primary School | East Palo Alto | Early childhood, school-aged youth, parents, caregivers |
| El Concilio of San Mateo County | East Palo Alto | Underserved communities in San Mateo County including immigrant families, Latinx/o/a community |
| EPA CanDo | East Palo Alto | Residents of East Palo Alto in need of affordable housing |
| Center for Independence of Individuals with Disabilities (CID) | Countywide | People with disabilities |
| Silicon Valley Bicycle Coalition | Countywide | Cycling community throughout San Mateo and Santa Clara Counties |

20 virtual interviews
(16 English, 4 Spanish)



VMT/GHG Program Framework

VMT/GHG Program Types



Countywide
Program

Countywide/Regional Program
for VMT/GHG-Inducing
Transportation Projects

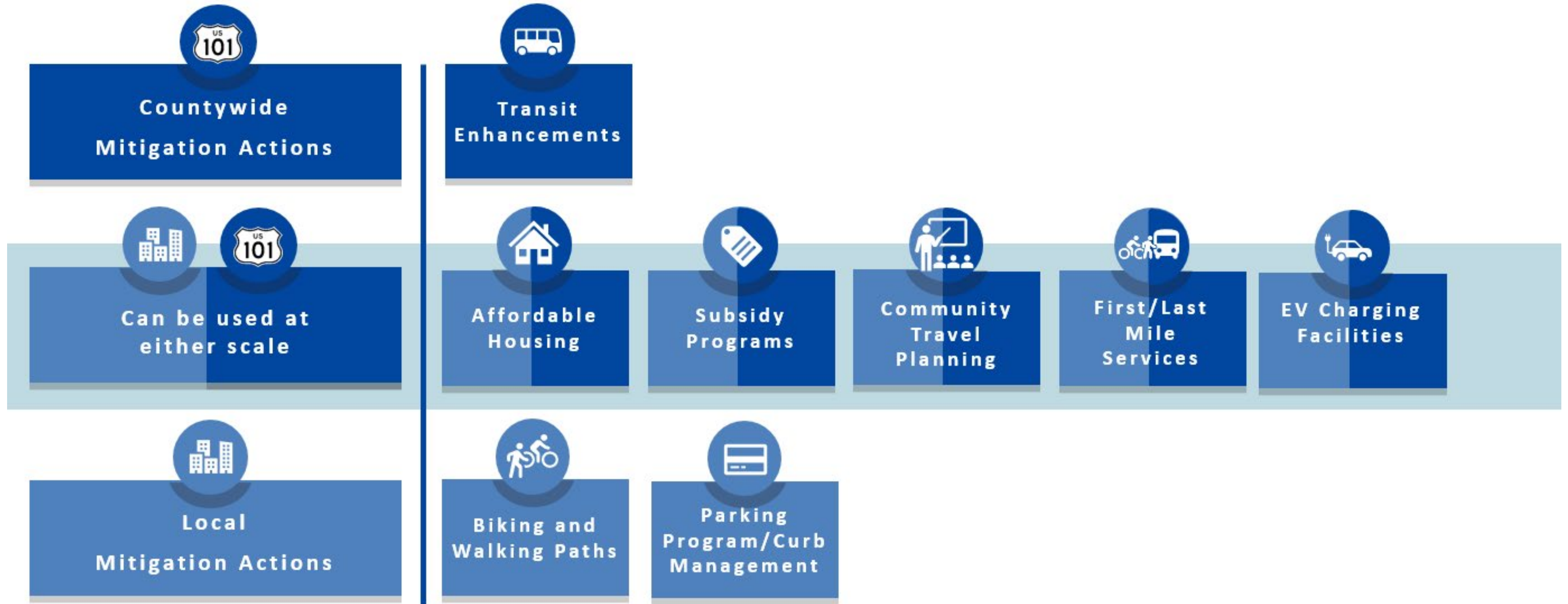


Local Model
Program

Local Model Program
for **Land Use Projects**

Mitigation Actions

Prequalified List



Enhance SamTrans Route ECR Service

Operational Mitigation Action



VMT Reduction Cost Effectiveness

Higher

Equity

Reduces VMT in some EFA areas

Transit-Oriented Communities (TOCs)

Primarily reduces VMT in TOCs

Feasibility/Scalability

Current projects in planning phase

■ C/CAG Traffic Analysis Zones within 1/2 Mile of a Route ECR Stop

Mobility Hubs

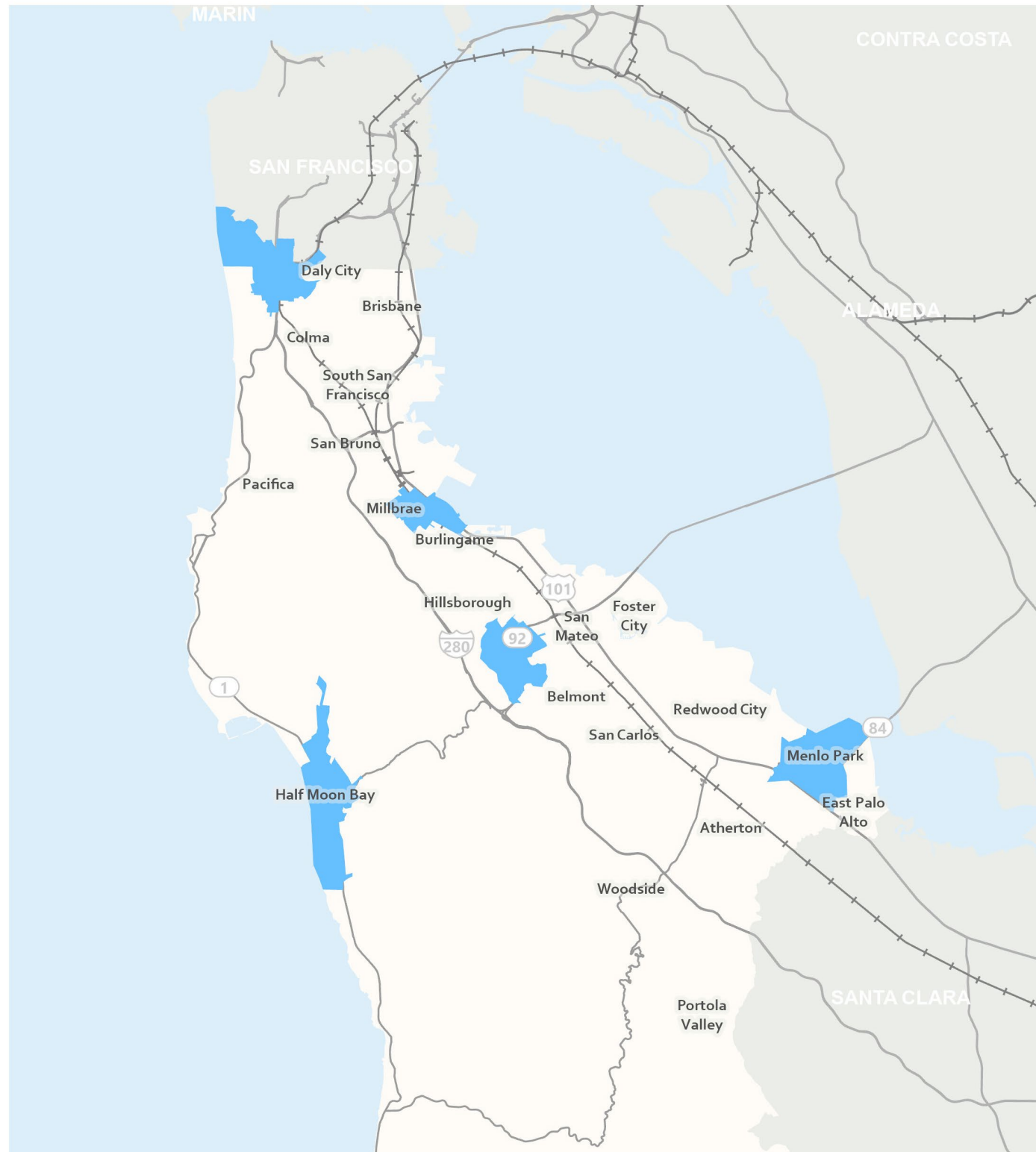
Operational Mitigation Action



Can be used at either scale



First/Last Mile Services



C/CAG Traffic Analysis Zones within 1/2 Mile of a Mobility Hub

VMT Reduction Cost Effectiveness

Moderate

Equity

Primarily reduces VMT in EPC areas

Transit-Oriented Communities (TOCs)

Primarily reduces VMT in TOC areas

Feasibility/Scalability

C/CAG study underway



Development of a

Vehicle Miles Traveled/Greenhouse Gas Model Mitigation Program for San Mateo County

Discussion

- Any feedback on the mitigation action list or VMT reduction actions that you have seen work in your local communities?
- How would this help overcome your local challenges?



Any final questions or comments?



Presenters:

Kim Springer, C/CAG - kspringer@smcgov.org
Matt Goyne, Fehr & Peers - m.goyne@fehrandpeers.com

