

# Safe Routes to School

C/CCAG Congestion Management and Environmental Quality Committee  
September 30th, 2024

---

Theresa Vallez-Kelly, MPH  
Coordinator Safe Routes to School  
San Mateo County Office of Education



# 6 Es of Safe Routes to School

**E**quity — Ensure programming is benefitting all students, prioritizing schools and communities with the highest needs and those who have been historically underserved

**E**ducation — Give students the tools and knowledge needed to safely navigate active transportation methods

**E**ncouragement — Generate awareness, interest, and enthusiasm for active transport through events and activities

**E**valuation — Utilize data to assess which strategies are effective in our school communities

**E**ngagement — Listen to students, families, communities and school leaders to identify concerns and barriers, then collaborate on solutions

**E**ngineering — Create physical improvements to streets and neighborhoods to make walking and rolling safer and more accessible

# Benefits of Safe Routes to School

## Why Safe Routes to School Matters...

### BETTER GRADES

Students who are more active tend to do better in school. Just 20 minutes of physical activity (or about the time it takes to walk a mile) can increase test scores.



### SAFER STREETS

Communities with higher rates of walking and rolling tend to have lower crash rates. Drivers may become more cautious when they expect to see people walking and rolling.



### COST SAVINGS

Walking or biking to school can save money on gas and other vehicle expenses. Reduced car trips can also save money on road maintenance.



### HAPPIER, HEALTHIER KIDS!

One mile of walking equals 2/3 of the recommended 60 minutes of daily physical activity. Exercise can also help reduce stress, depression, and anxiety.



### CLEANER AIR

Transportation is the leading source of greenhouse gas emissions in the United States. Walking or biking to school can save car trips, leading to cleaner air and healthier lungs.



### LESS TRAFFIC

Nationally, 10-14% of car trips during morning rush hour are for school travel. Walking or biking to school can reduce car trips, leading to less traffic congestion.



### IT'S FUN!

Walking or biking to school is a fun way for kids to start their day!!



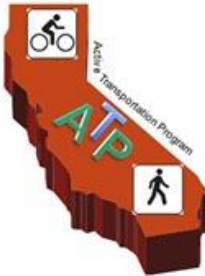
# Funding



2011 - present



2020 - present



2014 - March 2023



2018 - present

# 2022-2023 SRTS Services Provided

## (C/CAG Funded Services)

Bayshore Elementary School District	La Honda-Pescadero Unified School District	Redwood City School District
Belmont-Redwood Shores School District	Las Lomas Elementary School District	San Bruno School District
Brisbane School District	Millbrae School District	San Carlos School District
Cabrillo Unified School District	Menlo Park City School District	San Mateo Foster City School District
Hillsborough School District	Pacifica School District	San Mateo Union High School District
Jefferson Elementary School District	Ravenswood School District	Sequoia Union High School District
		South San Francisco Unified School District

# 2022-2023 SRTS Schools

## (TA Funded)

El Granada School / Cabrillo Unified School District	multimodal trail connection to school (no docs needed)	\$20,000
Pacifica School District	crosswalk improvements	\$20,000
Westlake Elementary/JESD	marquee	\$16,552
La Honda-Pescadero Unified School District	container, tools, and pop up project items	\$13,500
Roy Cloud Elementary School/RCSD	covered bike locker, scooter/skateboard docks, and traffic signs for bike rodeos	\$12,500
Benjamin Franklin Intermediate School/JESD	bike, scooter, skateboard racks	\$11,848
Belmont-Redwood Shores	crossing guards	\$10,000
Sunshine Garden / SSFUSD	electronic gate/sidewalk striping	\$6,000
Menlo Atherton High School/SUHSD	supplies, staff time	\$5,600
Las Lomitas Elementary School District	bike shed and bike repair	\$5,000
Hillsdale High School/SMUHSD	bike rack, supplies	\$4,500
Lower Laurel Elementary School/MPCSD	bike rack	\$4,500

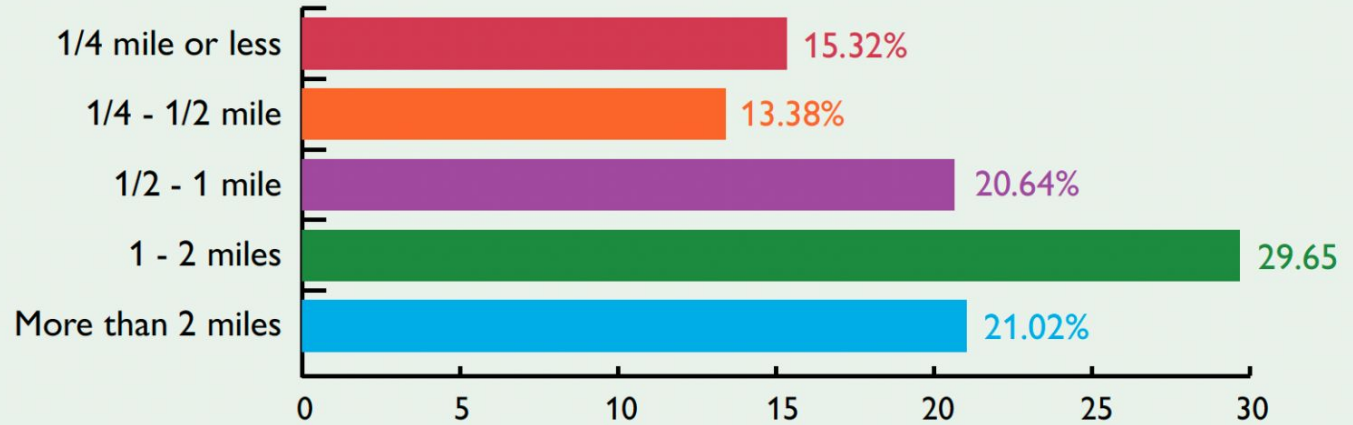
# 2022-2023 Service Providers and Partners



# Parent/Caregiver Survey

**What is the approximate distance from your home to school?**

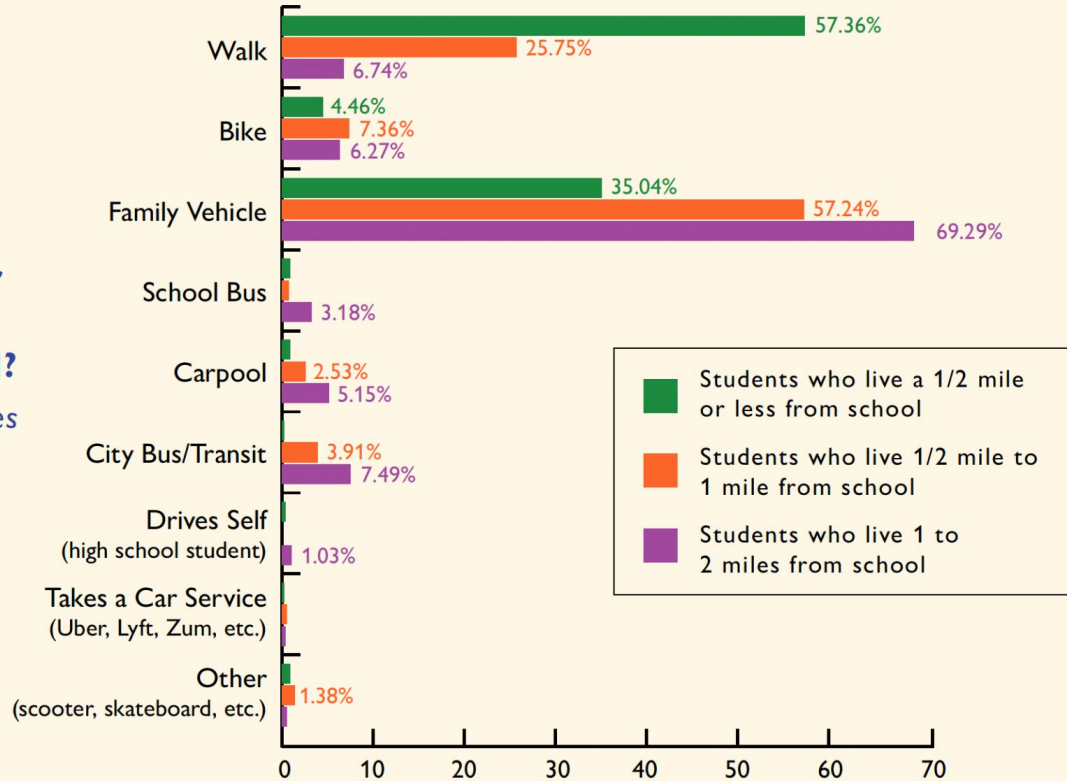
*2,108 total responses*





# Parent/Caregiver Survey

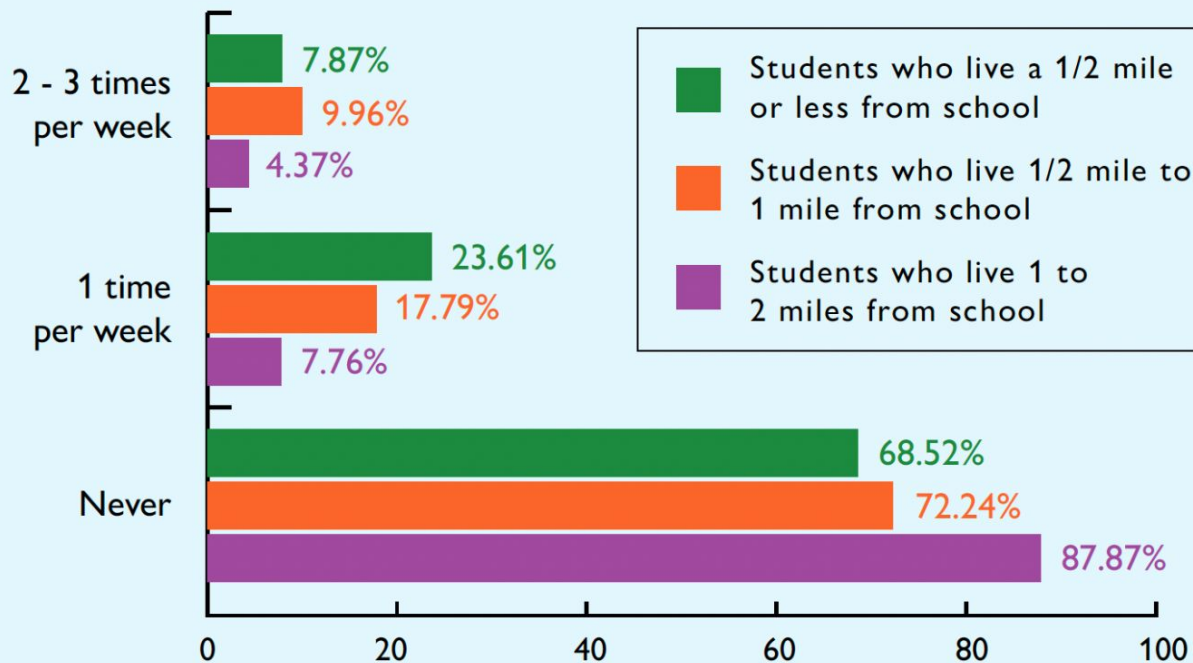
**How does your child usually travel to school?**  
*2,108 total responses*



# Parent/Caregiver Survey

**Does your child  
ever walk or bike?**

*1,412 total responses*



# Travel Tally Dashboard



## San Mateo County Safe Routes to School Travel Tally Data Summary

Tally Survey Summary

Tally Comparison and Trends

Parent/Caregiver Survey

Select a School Year

2023-2024

Select a District

All

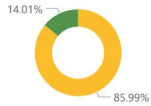
Select a School

All

Select a Grade

All Grades

Travel Tally Period



Time of Day



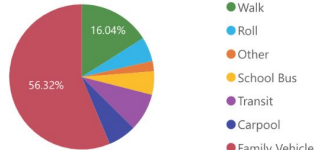
Time of Day

All

Travel Tally Period

All

Travel Modes



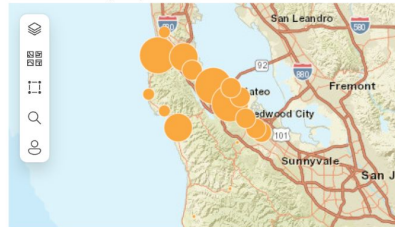
- Walk
- Roll
- Other
- School Bus
- Transit
- Carpool
- Family Vehicle

San Mateo County Safe Routes to School collects travel tallies on annually each school year. Schools submit travel tally data in the during the Fall. The travel tallies are collected on Tuesday, Wednesday, or Thursday for one week. Tallies can be used to count the number of children traveling to and from school using different modes of travel, such as walking, bicycling, bus, private vehicle, etc. Travel behavior enables a program to measure changes after SRTS activities and better understand a school environment through travel patterns.

By default, the map below displays the total travel tally counts by city for all school years. Making district, school, and/or school year selections using the filters on the upper left will alter what the map displays.

Clicking on a city's bubble will also impact what tally counts are displayed in the charts on the left.

Travel Count by City



Esri, HERE, Garmin, NGA, USGS, NPS Powered by Esri



<https://tinyurl.com/SMCOESRTSDataDashboard>

# School Travel Fellowship Program


---

Five city-school teams participate each year, started in fall 2021.

## Program provides...

- Support for team planning using systems change strategies
- Workshops on topics related to effective planning and active student travel
- Technical assistance from Alta Planning + Design

## Teams engage in...

- Walk audits (power)
  - Community engagement events (power)
  - Demonstration project materials and implementation (land use)
  - Quick build project materials and implementation (land use)
  - School Streets demonstration project (land use)
  - Walk and Roll to School Day support (culture)
  - Bike/Ped education for identified schools (culture)
- 

# 2022-2023 School Travel Fellowship Teams

---

East Palo Alto



Menlo Park



Millbrae



Redwood City



South San Francisco



# South San Francisco

---



# East Palo Alto

---

- 2022 STF Project
  - Two Temporary Traffic Circles
    - Pulgas Avenue & Beech Street
    - Pulgas Avenue & Runnymede Street
- 2023 Project
  - 30% design & preliminary cost estimate
  - Fellowship funding one intersection & City funding the second



# Menlo Park

---



Menlo Park

## Safe Routes to School

Rutas Seguras a la Escuela

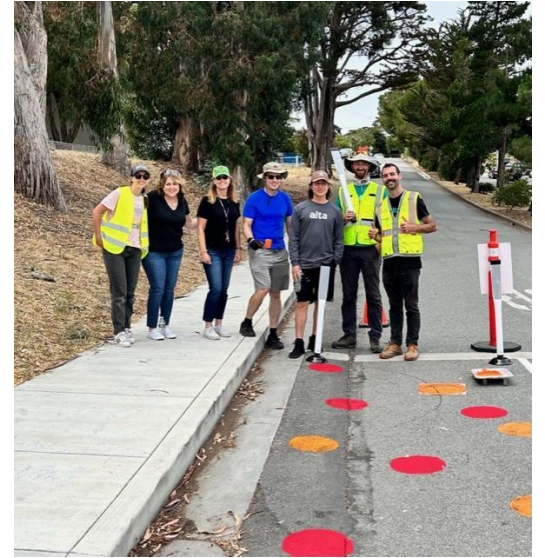
Supporter • El Partidario





# Millbrae

---



# Redwood City

---



# Complete Streets Leadership Academy



# Walk Audits



<b>Alta Planning + Design</b>	<b>Mark Fenton</b>
Ponderosa Elementary (South San Francisco)	Ben Franklin Intermediate (Daly City/Broadmoor)
Meadows Elementary (Millbrae)	Thomas R. Pollicita (Daly City)
Green Hills Elementary (Millbrae)	Half Moon Bay High School (HMB)
Ralston Intermediate (Belmont)	Ortega Elementary (Pacifica)

# Events Around the County



Community Bike Rodeos



Crossing Guard  
Appreciation Week



Every Kid Deserves a Bike



International Walk to School Day



Bike Month



RBWTSD

# Farmworker Family Event



3-Minute Video - <https://vimeo.com/user101999620/farmworkershort?share=copy>

# The Future of SRTS in SMC

- Tailored technical assistance
- Equity-centric approach
- Advocacy for active transportation
- Relationship-building support
- Comprehensive data management



# Thank You!

Theresa Vallez-Kelly  
tvkelly@smcoe.org

