

Safe Routes to School Annual Report for FY 2023-2024

C/CAG Congestion Management and Environmental Committee
April 28, 2025

Theresa Vallez-Kelly, MPH
Coordinator Safe Routes to School
San Mateo County Office of Education



6 Es of Safe Routes to School

Equity — Ensure programming is benefitting all students, prioritizing schools and communities with the highest needs and those who have been historically underserved

Education — Give students the tools and knowledge needed to safely navigate active transportation methods

Encouragement — Generate awareness, interest, and enthusiasm for active transport through events and activities

Evaluation — Utilize data to assess which strategies are effective in our school communities

Engagement — Listen to students, families, communities and school leaders to identify concerns and barriers, then collaborate on solutions

Engineering — Create physical improvements to streets and neighborhoods to make walking and rolling safer and more accessible

Benefits of Safe Routes to School

Why Safe Routes to School Matters...

BETTER GRADES

Students who are more active tend to do better in school. Just 20 minutes of physical activity (or about the time it takes to walk a mile) can increase test scores.



SAFER STREETS

Communities with higher rates of walking and rolling tend to have lower crash rates. Drivers may become more cautious when they expect to see people walking and rolling.



COST SAVINGS

Walking or biking to school can save money on gas and other vehicle expenses. Reduced car trips can also save money on road maintenance.



HAPPIER, HEALTHIER KIDS!

One mile of walking equals 2/3 of the recommended 60 minutes of daily physical activity. Exercise can also help reduce stress, depression, and anxiety.



CLEANER AIR

Transportation is the leading source of greenhouse gas emissions in the United States. Walking or biking to school can save car trips, leading to cleaner air and healthier lungs.



LESS TRAFFIC

Nationally, 10-14% of car trips during morning rush hour are for school travel. Walking or biking to school can reduce car trips, leading to less traffic congestion.



IT'S FUN!

Walking or biking to school is a fun way for kids to start their day!!



Funding



2011- present



2020 - present



2018 - present



2022 - present

Participation Breakdown

83 schools in 20 School Districts (51 were Title 1 Schools)

- 59 K-5 Schools
- 7 K-8 Schools
- 12 Middle Schools
- 5 High Schools



List of Title 1 Schools

2023-2024 SRTS Services Provided

Bayshore Elementary School District	La Honda-Pescadero Unified School District	San Bruno School District
Belmont-Redwood Shores School District	Las Lomas Elementary School District	San Carlos School District
Brisbane School District	Millbrae School District	San Mateo Foster City School District
Cabrillo Unified School District	Menlo Park City School District	San Mateo Office of Education
Hillsborough School District	Pacifica School District	San Mateo Union High School District
Jefferson Elementary School District	Ravenswood School District	Sequoia Union High School District
	Redwood City School District	South San Francisco Unified School District

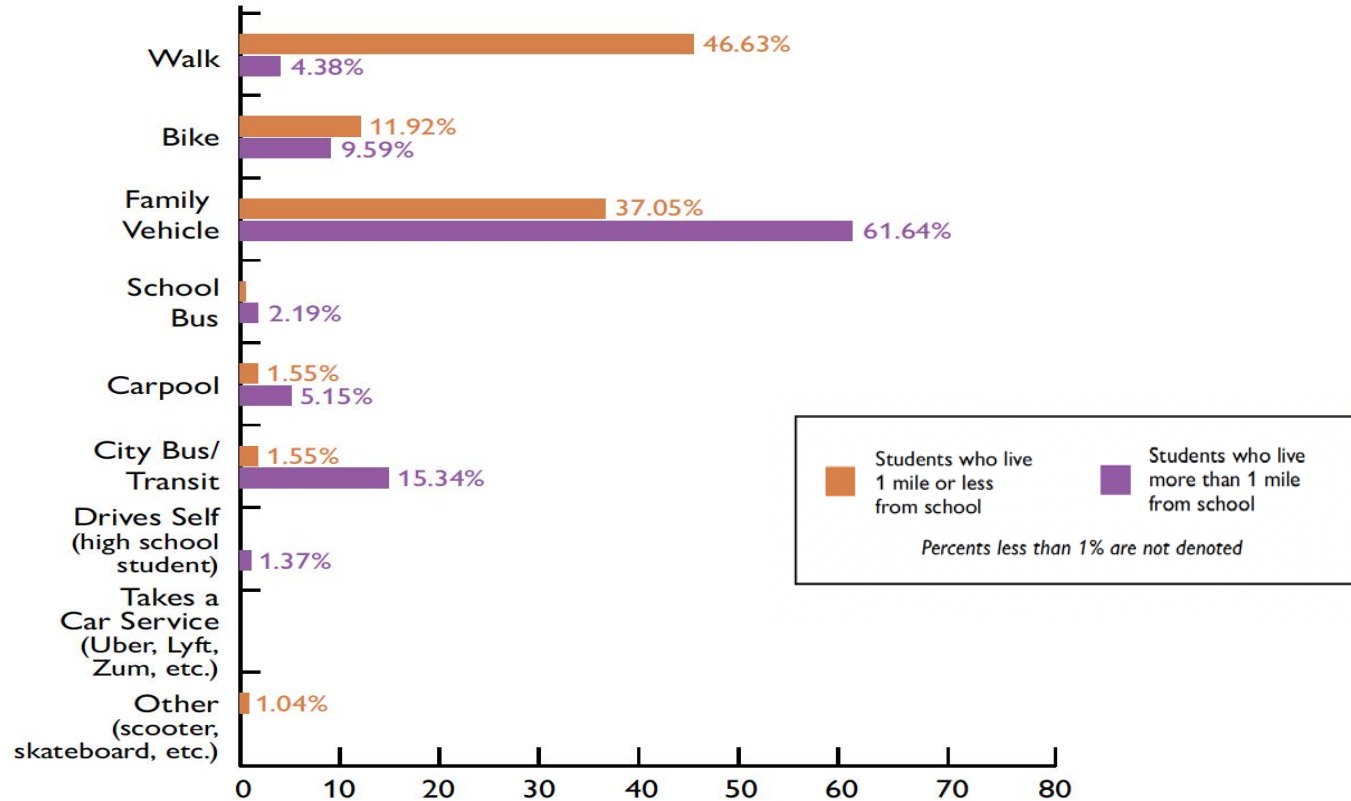
2023-2024 Service Providers and Partners



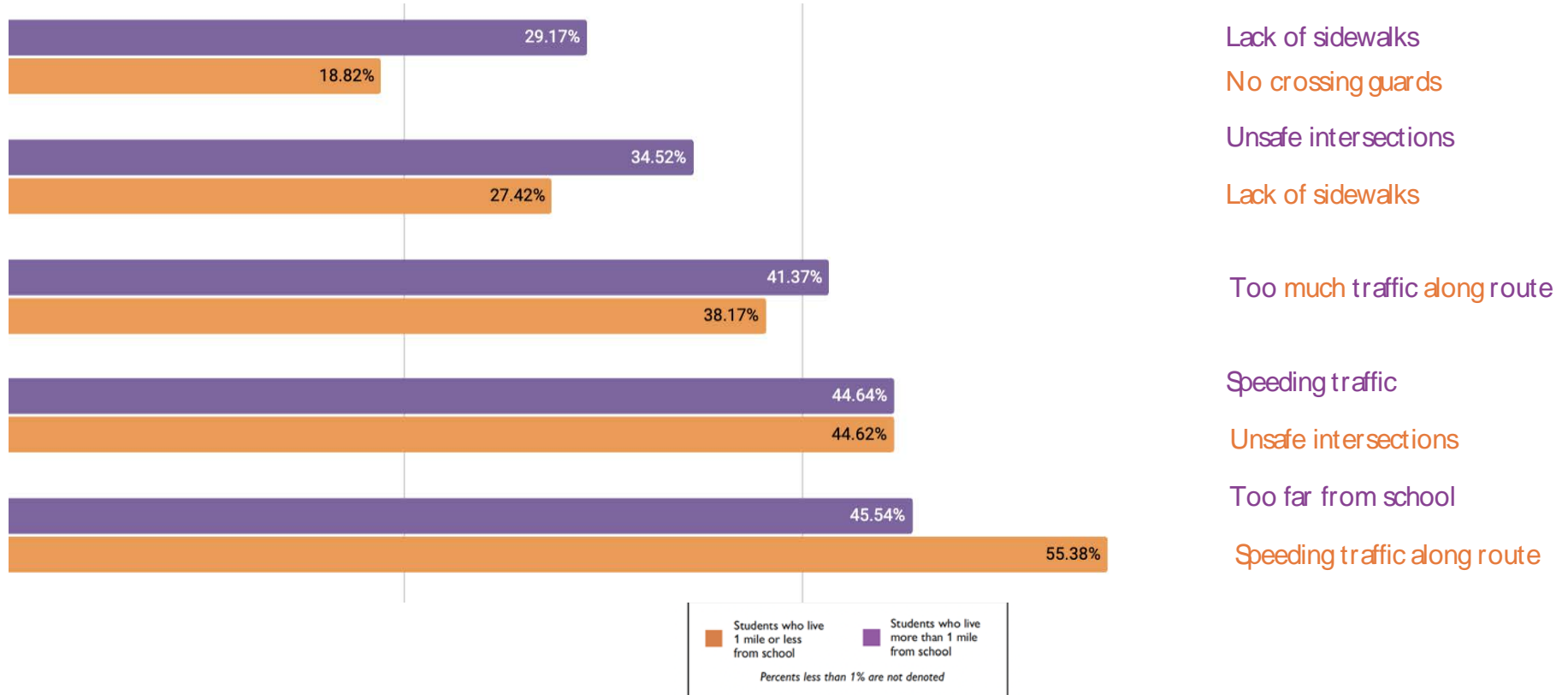
2023-2024 TA Funded Projects

School	Project	Award Amount
Belmont-Redwood Shores School District	Crossing Guard Program & Parking Lot Safety	\$20,000
Cabrillo Unified School / Half Moon Bay High School	Half Moon Bay High School Pedestrian and Bicycle Safety	\$20,000
La Honda-Pescadero Unified School District_Pescadero Middle & High School	PMHSBike Mechanic Apprenticeship Program	\$5,000
Las Lomas Elementary School District / Las Lomas Elementary School	Replace existing Bike Racks and renovate the school street for Bike/Pedestrian Safety	\$5,000
MESD_Green Hills Elementary School	Incorporate clear signage and crosswalk for bike and pedestrian safety	\$5,000
MESD_Meadows Elementary School	Purchase/install flashing beacon	\$20,000
Pacifica School District_Ortega Elementary School	Ortega Elementary School Crosswalk Improvement and Purchase/Install Flashing Beacon	\$20,000
San Bruno Park	Improve Bike/Pedestrian safety for 3 San Bruno Park Schools (Bell Air, Allen, and John Muir)	\$20,000
SMUHSD_Hillsdale High School	Bike repair workshop with bike mechanic	\$3,000
SJHSB_Menlo-Atherton High School	Bike Shed Program	\$5,000
SJHSB_Woodside High School	Woodside High School Bike Shed Program to Promote Bike Safety and Learn Maintenance Skill	\$5,000
South San Francisco Unified School District_Spruce Elementary School	Purchase/install bike racks	\$3,500

Parent/Caregiver Survey



Parent/Caregiver Survey



Travel Tally Dashboard

Parent/Caregiver
Information Added



San Mateo County Safe Routes to School Travel Tally Data Summary

Summary Data

Multi-Year Trends

Parent-Caregiver Survey

San Mateo County Safe Routes to School collects travel tallies on annually each school year. Schools submit travel tally data in the during the Fall. The travel tallies are collected on Tuesday, Wednesday, or Thursday for one week. Tallies can be used to count the number of children traveling to and from school using different modes of travel, such as walking, bicycling, bus, private vehicle, etc. Travel behavior enables a program to measure changes after SRTS activities and better understand a school environment through travel patterns.

Select a school year:

2023-2024

Select a District

All

Select a School

All

Select a Grade

All Grades

Time of Day

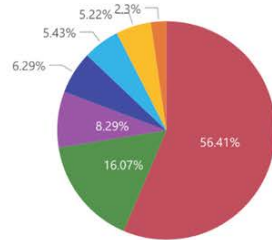
All

Travel Tally Period

All

Travel Mode

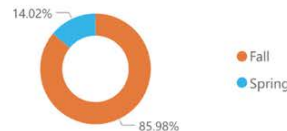
- Family Vehicle
- Walk
- Transit
- Carpool
- Roll
- School Bus
- Other



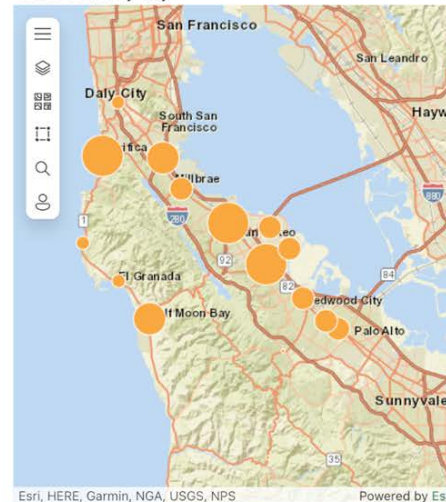
Time of Day



Travel Tally Period



Travel Count by City



Scan the QR code to
access the dashboard


School Travel Fellowship

Five city-school teams participate each year, started in fall 2021.

Program provides...

- Support for team planning using systems change strategies
- Workshops on topics related to effective planning and active student travel
- Technical assistance from Alta Planning + Design

Teams engage in...

- Walk audits (power)
 - Community engagement events (power)
 - Demonstration project materials and implementation (land use)
 - Quick build project materials and implementation (land use)
 - School Streets demonstration project (land use)
 - Walk and Roll to School Day support (culture)
 - Bike/Ped education for identified schools (culture)
- 

2023-2024 School Travel Fellowship Teams

East Palo Alto



Menlo Park



San Mateo



Redwood City



South San Francisco



South San Francisco



Hardened Centerline

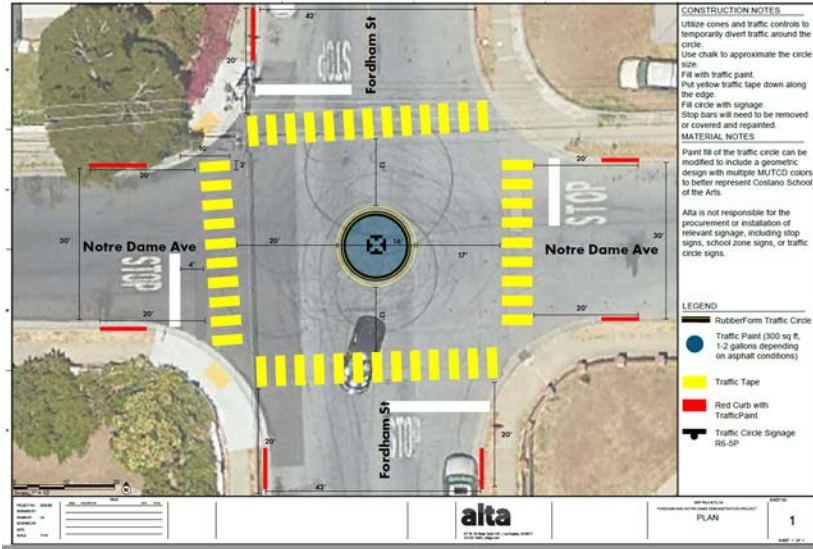
aims to slow down drivers as they turn into the school and discourages illegal U-Turns.



Curb Extensions

shorten the distance required for people to cross the street and aim to improve visibility and slow down turning vehicles.

East Palo Alto



Temporary Traffic Circle

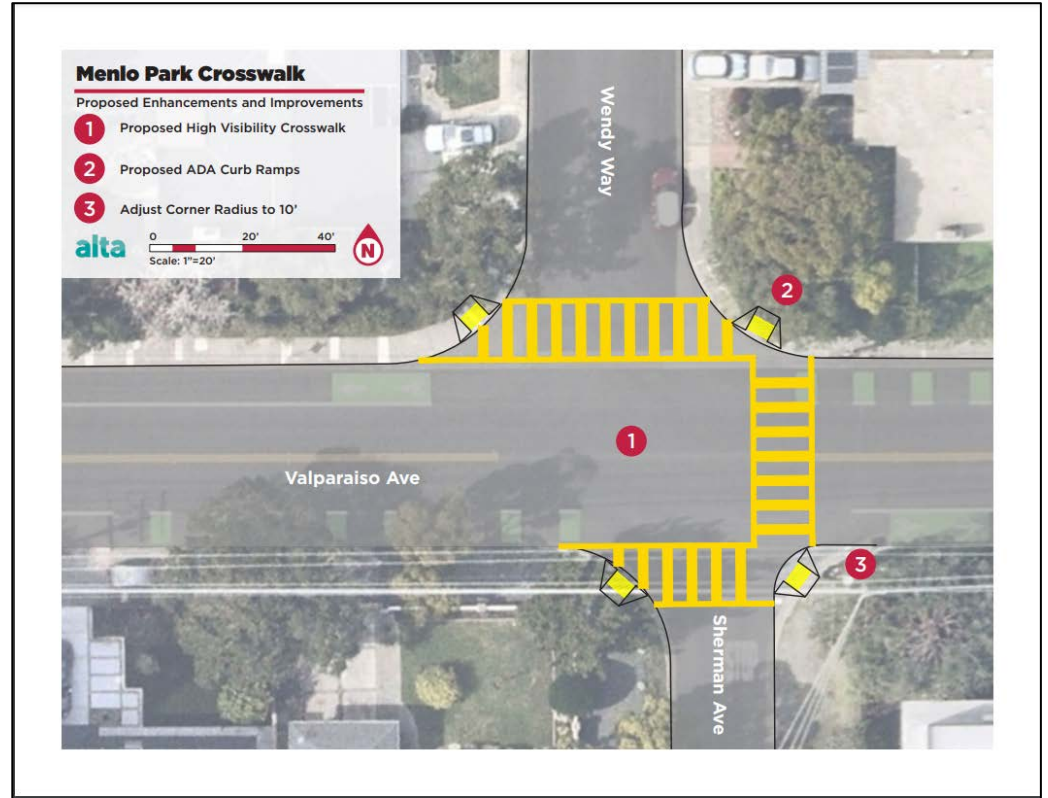
East Palo Alto



Walkway
at Costano

Menlo Park

Initial Project Proposal
Installation of Crossing on
Valparaiso



Menlo Park - Lessons Learned

- **Preliminary work with all stakeholders** involved is essential (e.g., not just commitment to participate in the Fellowship, but full understanding of project proposal and scope of work by everyone)
- **Continued involvement with stakeholders** throughout and at critical junctures (e.g., no bus representation at walk audit - because they were driving! - but key challenges unable to be addressed)
- **Parameters established early** (e.g., engineer stamped plans required for all demonstration projects)

San Mateo



High Visibility Crosswalks



Curb Extensions

Redwood City



SPOKES Program

Walk Audits



Alta Planning + Design

Clifford Elementary (Redwood City)

Ocean Shore Elementary (Pacifica)

Roy Cloud Elementary (Redwood City)

Mark Fenton

Buri Buri/Alta Loma (South San Francisco)

Las Lomas Elementary (Atherton/County/MP)

George Washington Elementary (Daly City)

Woodside High School (Redwood City/County/Caltrans)

Walk Audit Facilitator Training

Walk Audit Facilitator Training

Led By National Walkability Expert **Mark Fenton**



An immersive experience building skills for equity and traffic safety!

29
FEB

Informational Webinar 10:00am - 11:30 am
Introductory informational webinar for walk audit facilitator candidates

13
MAR

Facilitator Training Webinar 10:00 am - 12:00 pm

- Fundamental principles of Walk Audits
 - Facilitating opening conversation/presentation
 - Leading the walk
 - Facilitating 3P planning exercise
 - Utilizing Our Voice as a community data collection tool

25
APR

In-Person Lunch with Mark and Scouting

12:30 pm - lunch; 2:00 pm scouting begins

- Discussion: Approaches to encourage creativity, build bridges among participants and the ideas they are offering.
- Joint scouting to demonstrate best practices

26-28
APR

Attend a Walk Audit!

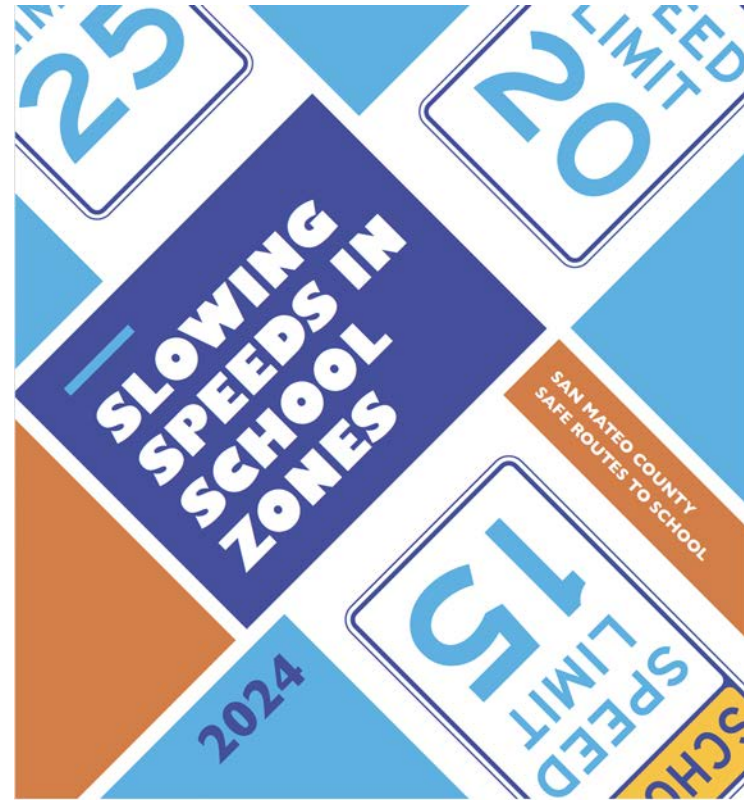
- March 26 - 7:45 am - 10:00 am, Las Lomitas Elementary
 - 299 Alameda de las Pulgas, Atherton
- March 26 - 2:30 pm - 4:00 pm, TBD
- March 27 - 7:45 am - 10:00 am, George Washington Elementary
 - 251 Whittier Street, Daly City
- March 28 - 7:45 am - 10:00 am, Woodside High School
 - 199 Churchill Ave, Redwood City



REGISTER Here for the walk audit facilitator training
<https://tinyurl.com/WalkAuditFacilitator>



Slow Speed School Zones



Healthy Kids • Green Communities • Safe Journeys

alta



Our Voice: Citizen Science for Health Equity

Discover



Discover aspects of your community that impact healthy living

Discuss



Discuss your findings with other citizen scientists

Activate



Activate for local improvements

Change



Change your community for the better

Citizen Science Leadership Academy



5-6 sessions

Citizen Science

Community Health

Transportation

Data Walk

Stakeholder Mtg Prep

Action Steps

Events Around the County



Golden Sneaker Contest



Crossing Guard
Appreciation Week



Every Kid Deserves a Bike



Kent Award Winner



Bike Month



RBW TSD

Farm worker



Thank You, Partners!
¡Gracias, Socios!
謝謝各位夥伴!



DJ EL MAGO



The Future of SRTS in SMC

- **Expanding Community Engagement:**
Strengthening partnerships with schools, municipalities, and local organizations to broaden the impact of Safe Routes to School Initiatives.
- **Enhancing Educational Opportunities:**
Developing new curriculum components and interactive learning experiences to further engage students, families, and senior communities in active transportation education.
- **Advancing Policy and Infrastructure Advocacy:**
Collaborating with local agencies to advocate for infrastructure improvements, traffic safety policies, and sustainable transportation solutions that benefit all road users.



Thank You, C/CAG!



Thank You!
tvkelly@smcoe.org