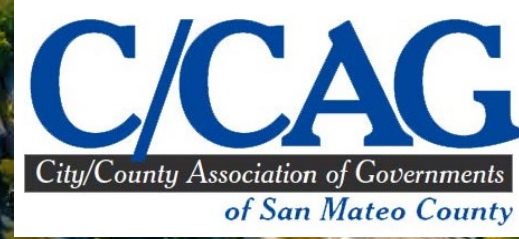




C/CAG Funded Projects Map

Technical Advisory Committee
4/16/26



Background

Project: Web Map of the last 5 years (fund cycles from 2020-2025) of non-programmatic C/CAG fund-awarded projects using ESRI software and web tools.

Goal: Synthesize and visualize project data for San Mateo County projects from local, regional, and state fund sources:

- One Bay Area Grant (OBAG)
- State Transportation Improvement Program (STIP)
- Transportation Fund for Clean Air (TFCA)
- Measure M
- Transportation Development Act Article 3 (TDA 3)
- MTC Lifeline Transportation Program



Data Collection & Map Development

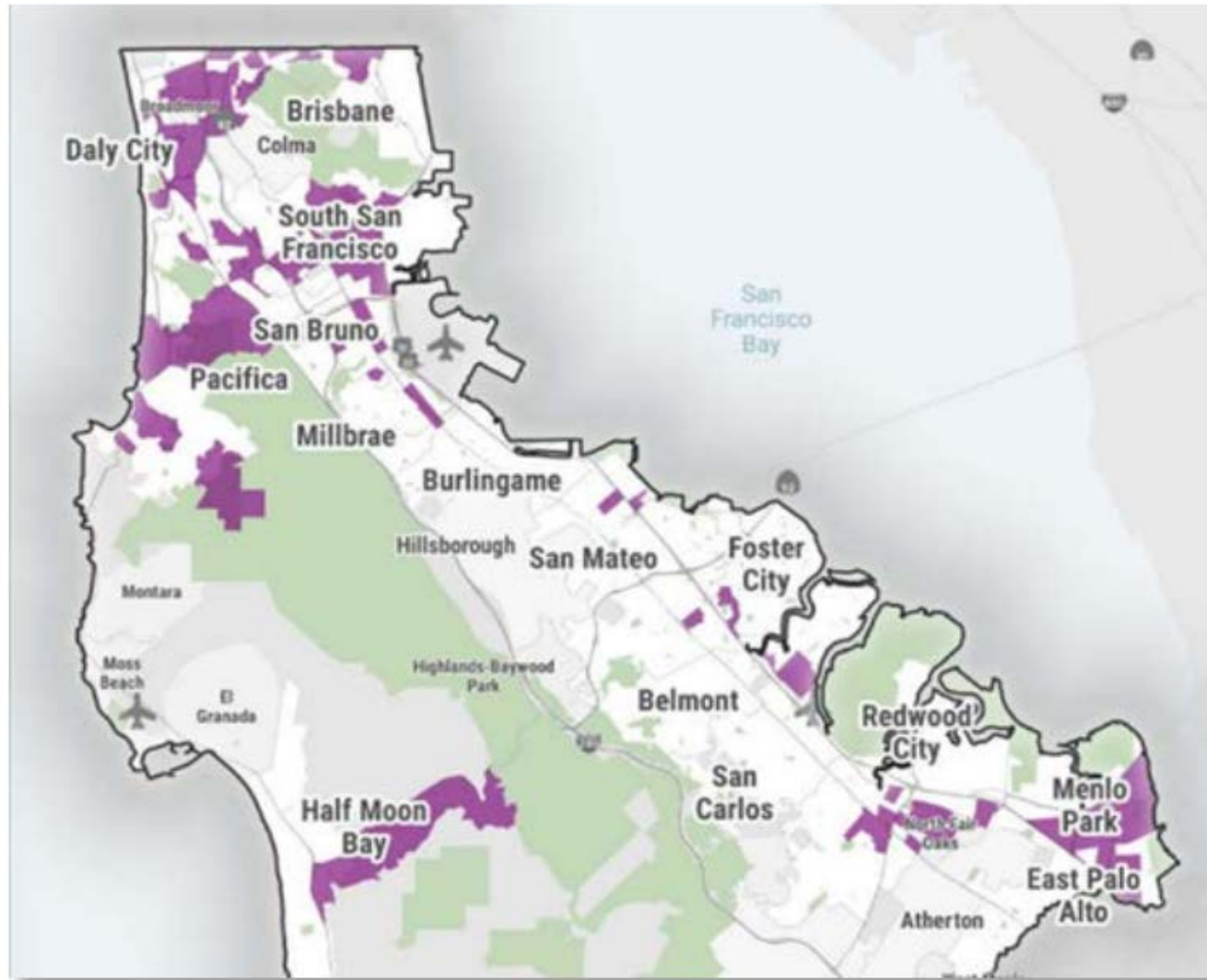


Figure 2: C/CAG Equity Focus Areas (EFAs)

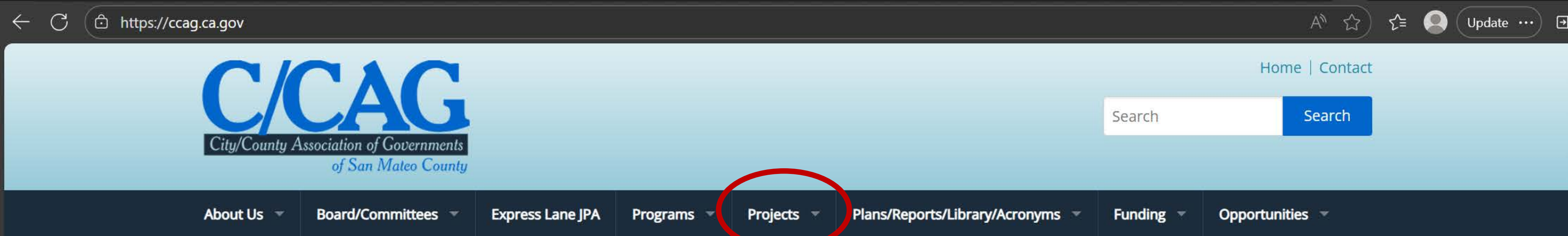
Source: 2021 San Mateo County Comprehensive Bicycle and Pedestrian Plan, 2021

C/CAG and MTC project data including:

- Project Maps
- Call for Projects Applications
- Additional Project Documents
- Project websites
- C/CAG Equity Focus Areas Map (2021)
- MTC Plan Bay Area Equity Priority Communities

Development Software/Tools:

- Excel
- ArcGIS Pro
- ArcGIS Online
- ArcGIS Web App



How Can I View the Map?

C/CAG Website: Projects tab

<https://ccag.ca.gov/projects/>

Project Information:

- Project Name, Location(s), Fund Source, Jurisdiction(s), Equity Focus Area Status, Equity Priority Community Status, Lead Sponsor(s), Awarded Fund Cycle, Total Funds Allocated, Year/Period, Project Type, Approximate Length (miles), Website

Projects

Map of C/CAG Fund-Awarded Projects

The interactive map displays the county transportation projects in San Mateo County that C/CAG has awarded funds to in the last 5 years, excluding programmatic projects.

Click here to access map: Coming Soon

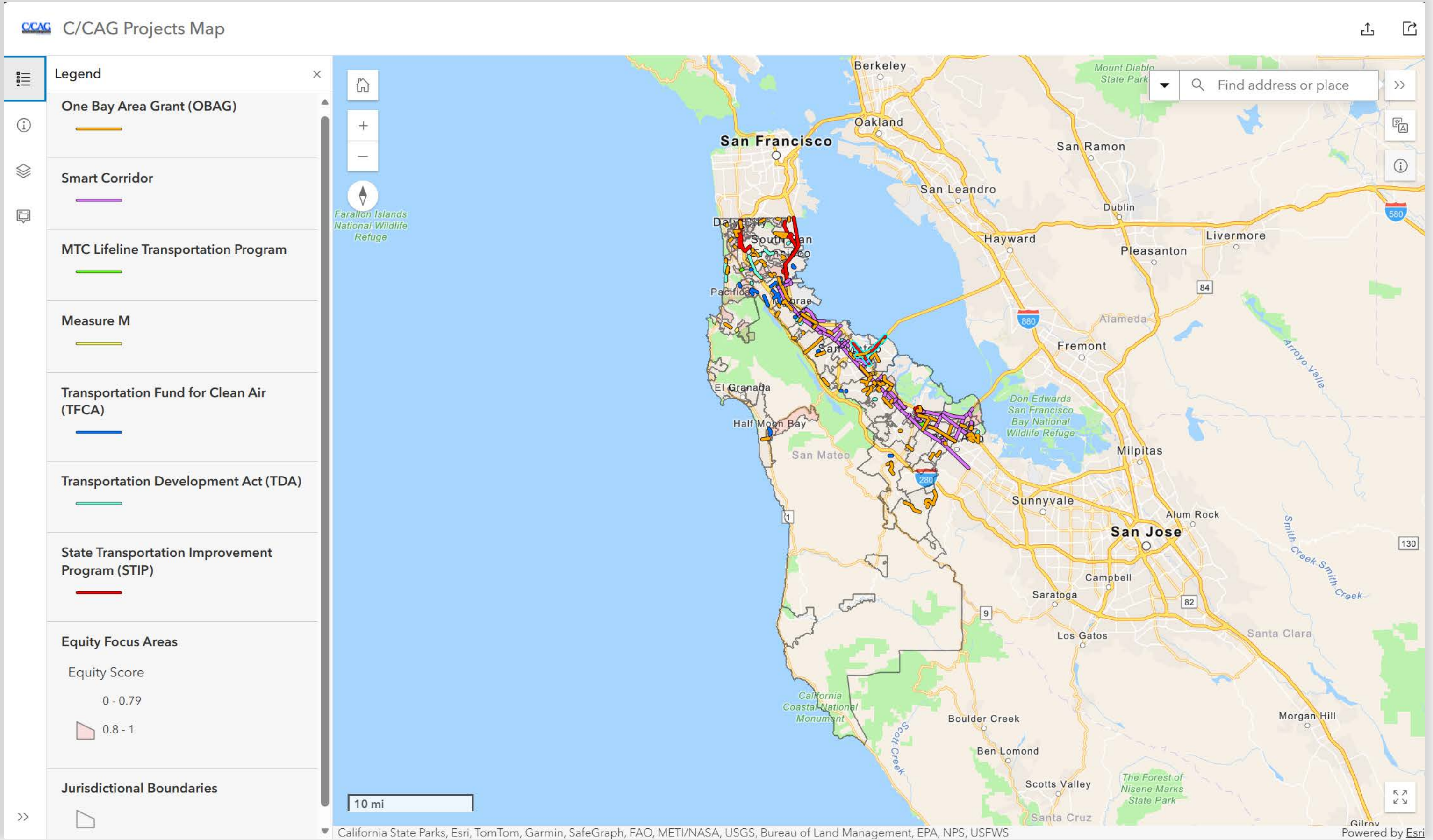
Project Fund Sources:

- One Bay Area Grant (OBAG)
- State Transportation Improvement Program (STIP)
- Transportation Fund for Clean Air (TFCA) Measure M
- Transportation Development Act Article 3 (TDA 3)
- MTC Lifeline Transportation Program

We are looking for feedback about the map. [Contact Us](#)



Map Preview



Map Preview (Cont.)

C/CAG Projects Map

Find address or place

Info

SR92/US 101 Direct Connector

Zoom to

Project Name	SR92/US 101 Direct Connector
Jurisdiction	San Mateo, Foster City
Website	View
Location	101/92 interchange (101 from Hillsdale Boulevard to Kehoe Avenue and 92 west of Hayward-San Mateo Bridge).
Description	The project includes a dedicated managed lane connecting State Route 92 and the United States Highway 101 Express Lanes. Currently, there is no direct connection between the 101 Express Lanes and SR 92. As a result, drivers must exit the 101 Express

2 mi

California State Parks, Feri, TomTom, Garmin, SafeGraph, GeoTechnologies, Inc, METI/NASA, USGS, Bureau of Land Management, EPA, NPS, USDA, USEWS

Powered by Feri



Any Questions?

Sophia Palacio, Intern/Fellow II, spalacio@smcgov.org

