

Safe Routes to School School Travel Fellowship

**C/CAG CMP
Technical Advisory Committee**

Theresa Vallez-Kelly, SRTS Coordinator

May 21, 2026



Cycle 4 School Travel Fellowship

East Palo Alto



Millbrae



San Carlos



San Mateo County



South San Francisco



East Palo Alto – Cesar Chavez Ravenswood Middle School



Ralmar Avenue and Bay Road Demonstration Project:

- Install a small curb extension / turn radius reduction at the northwest leg of the intersection to shorten the crossing distance for pedestrians and improve visibility.
- Enforce the daylighting (no parking zone) at the north side of the intersection of Ralmar Ave and Bay Rd by installing flexible delineators and paint to physically prevent parking and improve visibility.
- Delineators adjacent to the bike lane to add protection at the corner

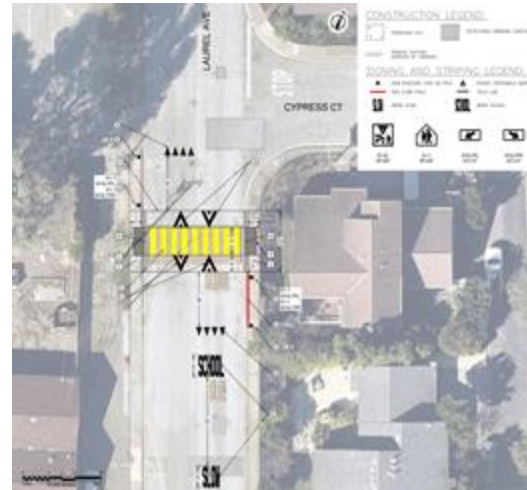
East Palo Alto - CCRMS

- The demonstration project near Cesar Chavez Ravenswood Middle School was successfully installed on Tuesday 8/12/25, a day before school started! That was great timing!



Millbrae – Green Hills Elementary

- Alta 30% Conceptual Plans
- High-visibility ladder crosswalks and sidewalk bulb outs at Laurel Ave and Ludeman Ln. Raised crosswalk, striping, and signage on Laurel Ave at Cypress Ct. (Figure 2)
- Crosswalk flagging in place for flashing beacons to increase pedestrian visibility.



Millbrae – Green Hills Elementary

- Walking School Bus



San Carlos – Dartmouth Area Schools



San Carlos – Dartmouth Area Schools

<p>Task 1: Parking Concept Plan & Implementation</p>	<p>Alleviate congestion by implementing parking restrictions during peak school hours and striping improvements</p>
<p>Task 2: Samtrans Bus Stop Improvements</p>	<p>Improve bus ridership</p>
<p>Task 3: Redirect safe pedestrian pathway with demo implementation</p>	<p>Obstruct pedestrian pathway through the the school parking lot for students to remain on the sidewalk</p>



San Mateo County – Farallone View (El Granada)



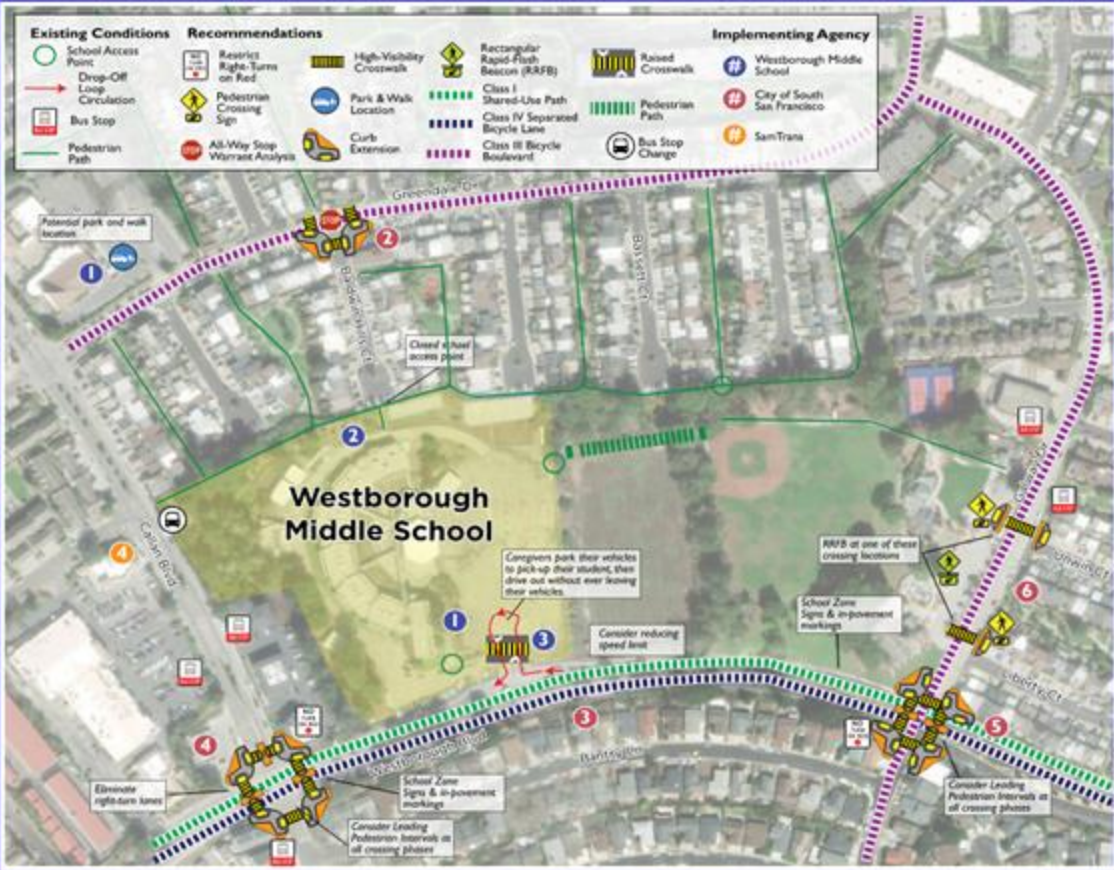
- Pre-walk audit team observation at Farallone View Elementary School - February 24, 2025
- San Mateo County cut back shrubs on 3rd St.
- SRTS Walk Audit Conducted at Farallone View Elementary School - April 24, 2025
- CUSD installed curb ramp at school entrance making it more accessible for strollers,

Next Steps

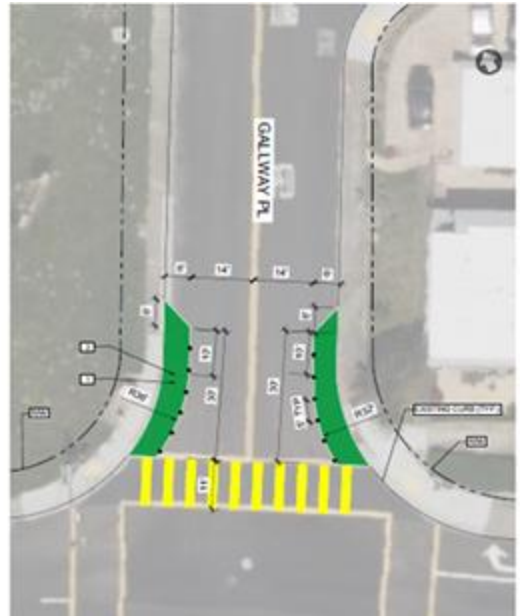
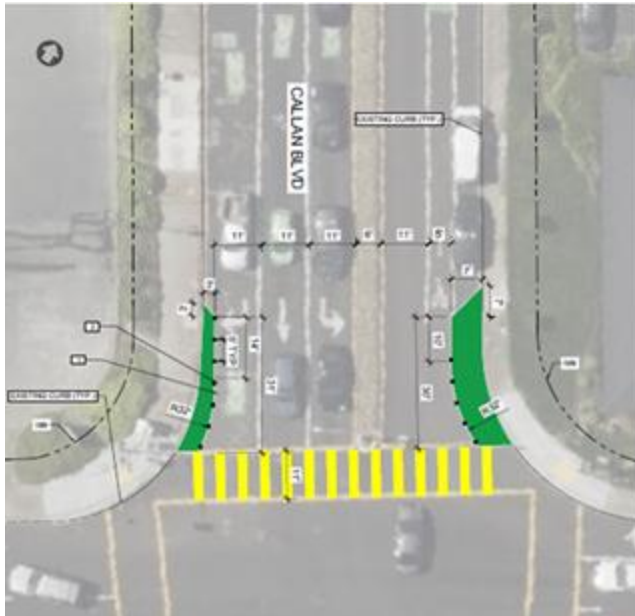
In process: Unincorporated San Mateo County SRTS White Paper to promote systemic approach to implementing projects with goal to develop framework to guide staff in community-led pilot projects and to provide community members clear expectations on our role, process, and considerations

- San Mateo County to pilot 15 mph slow speed school zones near Farallone View Elementary School
- School/parents to consider walking school buses

South San Francisco – Westborough Middle School



South San Francisco – Westborough Middle School



The demonstration project features:



Reduced Turning Radii
help slow down turning cars and enhance visibility between people driving and people walking

South San Francisco – Westborough Middle School



Thank you!

